

Granny Squares Dropped

88" x 100"

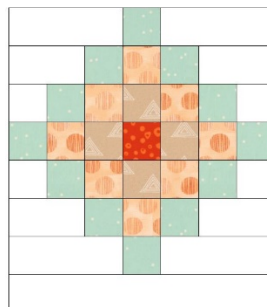
To make the quilt pictured:



You Need:

- 5-7/8 yards white for background
- 6-1/2 various colors for blocks.

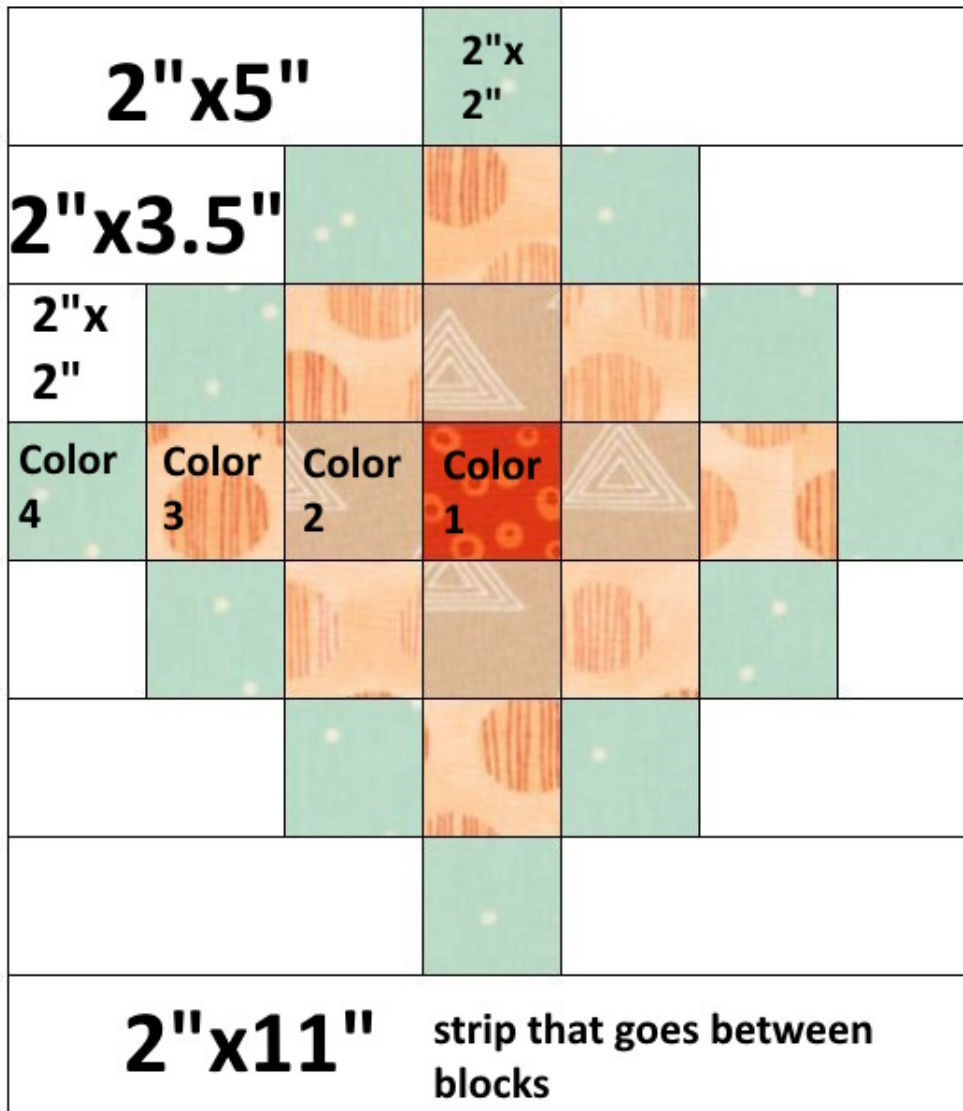
This quilt is made up of one 10.5" x12" finished in the quilt block and it looks like this:



Note: Use ¼" seams throughout. When longer than Width of Fabric (WOF) pieces are called for, simply sew together strips until you have the length needed.

Cut:

For block: Note – Numbers with " marking indicate cutting size, not finished size.



For ONE block:

From white:

- (4) 2"x5"
- (4) 2"x3.5"
- (4) 2"x2"
- (1) 2"x11" for the strip that goes between the blocks added to the top or bottom

From colored fabrics:

Color 1:

- (1) 2"x2" square

Color 2:

- (4) 2"x2" squares

Color 3:

- (8) 2"x2" squares

Color 4:

- (12) 2"x2" squares

How to make blocks:

Once you have decided on the colors of each block, (I first subdivided my squares into groups of 12, 8, 4, and 1 and took them to the sewing machine together. I laid them out in order beside my machine. I decided which colors/designs I liked together ahead of time and made each block separately and different from each other.

Make strips as shown:

Making sure color 1 is in the center of row 4, place the squares in order as shown:



Strip 4 – make 1:

Using your white 2" x 2" square, place them on the ends of the colorful squares as shown



Strip 3 – make 2:

Using your white 2" x 3.5" white pieces, place them on the ends of the squares as shown:



Strip 2 – make 2

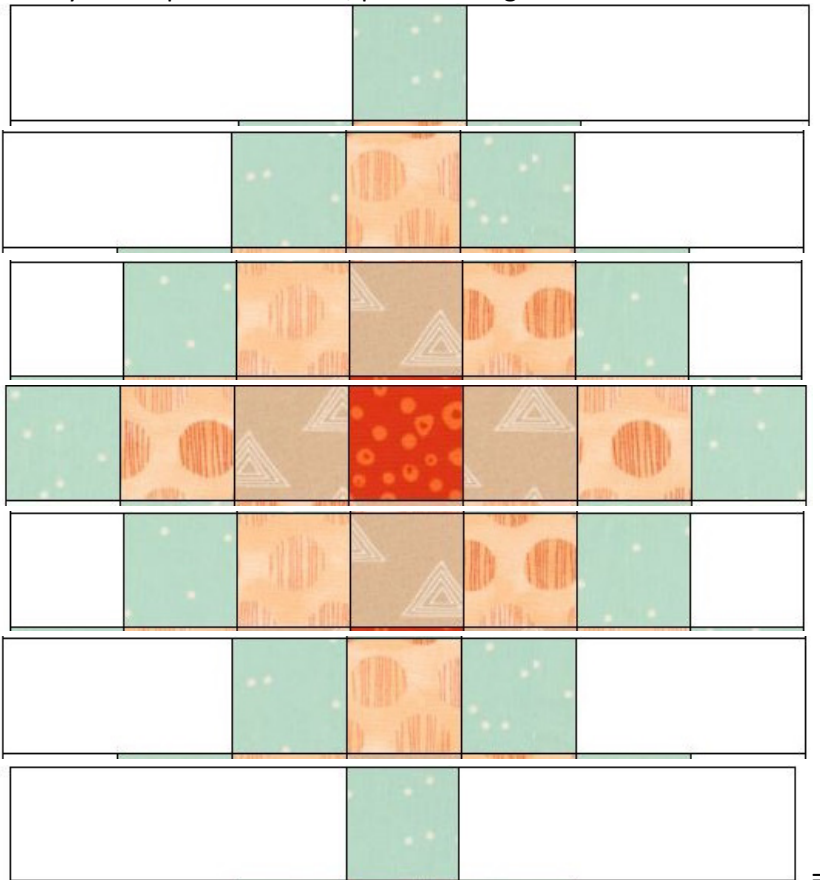
Using your white 2" x 5" white pieces, place them the ends of the squares as shown:



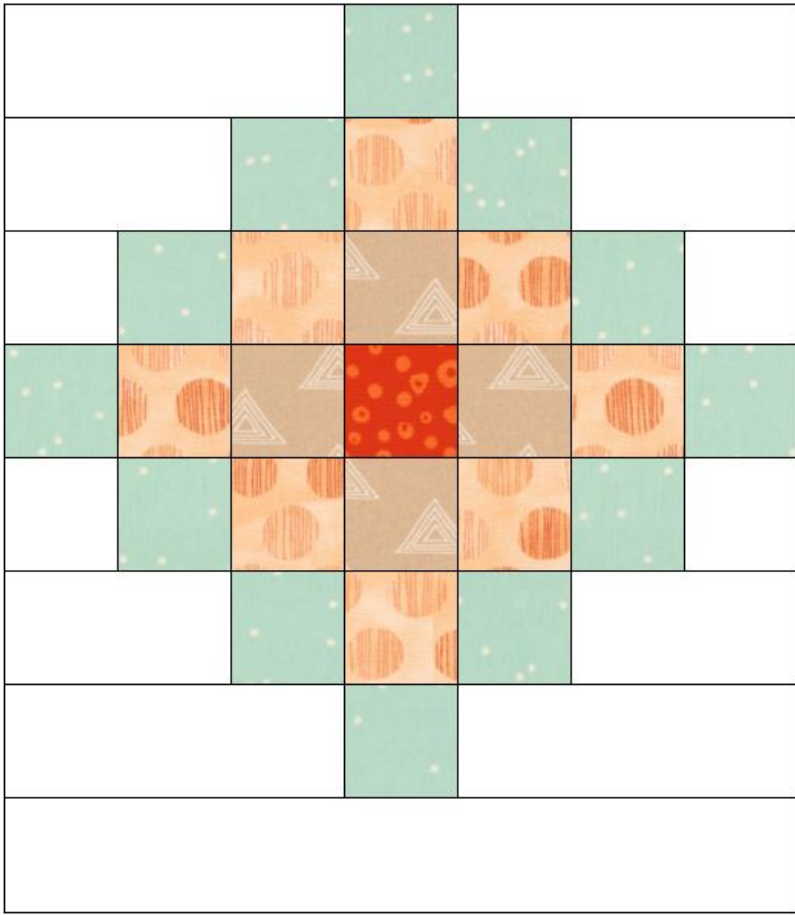
Strip 1 – make 2

Press each strip so the seams are all going the same direction.

Once your strips are all made, put them together as shown in this diagram: Arrange strips so that seams nest.

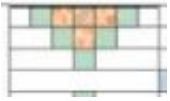


Once these strips are sewn together, add the 2" x 11" strip to the bottom of this block. It will now look like this:



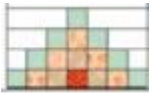
Make 60 blocks. They should measure 11"x12.5" at this point.

Make 4 blocks that look like this – they are simply **part** of a block



These blocks will measure 11"x6.5" at this point. You will use these as the top and bottom of half of the columns.

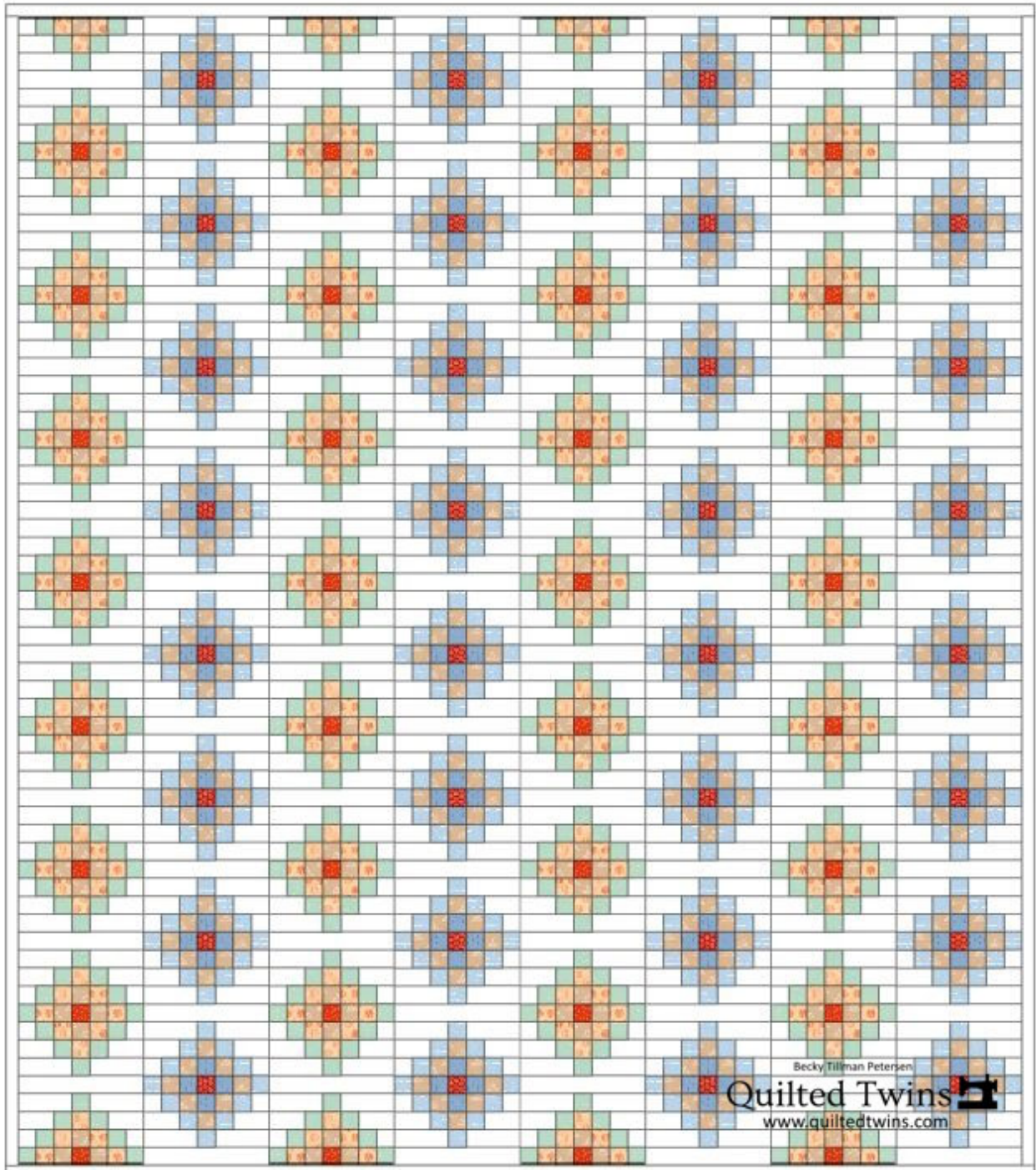
Make 4 blocks that look like this:



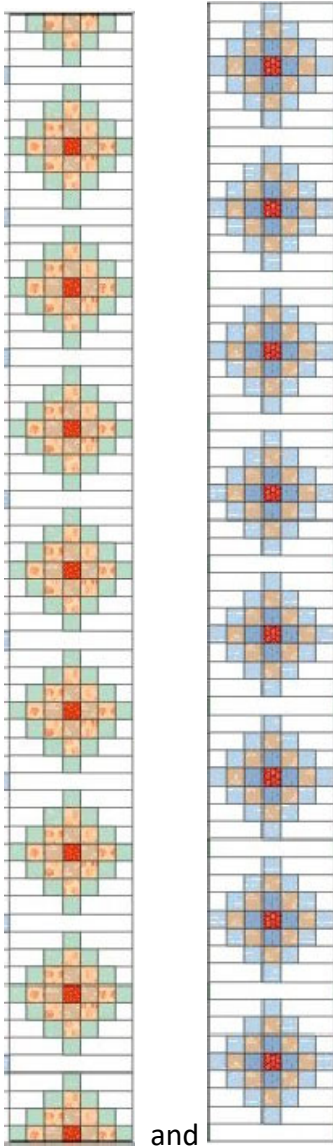
These blocks will measure 11"x6.5" at this point.

How to put together this quilt:

Sew together these rows as shown in the diagram. The rows in this pattern are up and down – usually called columns. Note that you need to add the half blocks to the top or bottom of the column as shown. Be sure to space the blocks in a pleasing arrangement to your eye. Details given below the diagram.



1. Make 4 columns that look like each of these.



Column 1

Column 2

Press the seams on all of column 1 “down”. Press all of the seams in column 2 “up”.

Once your columns are made, sew the columns together to form the top. The seams should nest. Press.

2. **Add white border:**

- Cut (2) 2.5”x96.5”. Attach to sides.
- Cut (2) 2.5”x 88.5”. Attach to top and bottom.

3. **Press well.**

4. **Sandwich**, using whatever type of batting and backing you prefer

5. **Quilt** as desired.

6. **Bind**, using whatever method you wish.

Congratulations! Your quilt is finished!

Enjoy!