

Q1605

Mustang Meadows

by Nancy
Glazier

FREE PATTERN
OFFERED IN
INDEPENDENT
QUILT SHOPS TO
COMPLEMENT THIS
FABRIC
COLLECTION



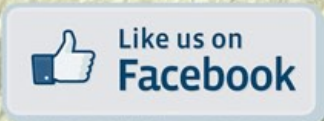
Wall Hanging (33" x 26")



Pillowcases (31" x 20 1/2")



Twin Quilt (64" x 95")



Mustang Meadows

Please read all instructions carefully before starting. All instructions include a 1/4" seam allowance and strips are cut from selvage to selvage unless otherwise stated. *Several fabrics are directional so pay close attention to the cutting directions. When cutting **Fabrics D and E** for the **TWIN QUILT**, cut the main pieces to be used for the pillowcases first and set aside, then cut the pieces needed from the remaining fabric.

Twin Quilt Instructions

approximate size: **64" x 95"**

1. Cut the following:

Fabric A - Cut 2 - 12 1/2" x 23 1/2" (center designs evenly)

Fabric B - Cut lengthwise: Stripe #1 (outer border) - Cut 2 - 6" x 84 1/2" (Sides), 2 - 6" x 53 1/2" (Top and Bottom), and 2 - 6" x 23 1/2" (center top and bottom)

Stripe #2 - Cut 2 - 4 1/2" x 38 1/2" (Top and Bottom) and 2 - 4 1/2" x 23 1/2" (Center)

***Fabric C** - Cut 1 - 6 1/2" x 23 1/2" (center design)

***Fabric D** - Cut for Pillowcase FIRST - 1 - 42" length x 26" wide (see pillowcase instructions on page 4)

Cut 4 - 6" x 6" squares (corners)

***Fabric E** - Cut for Pillowcase FIRST 1 - 42" length x 26" wide (see pillowcase instructions on page 4)

Cut 6 - 6 1/2" x 6 1/2" squares

***Fabric G** - Cut 5 - 3 1/2" strips, sew end to end, then subcut 2 - 3 1/2" x 60 1/2" (Sides) and 2 - 3 1/2" x 29 1/2" (Top and Bottom)

Cut 1 - 11 1/2" strip, subcut 4 - 11 1/2" x 6 1/2"

Cut 1 - 11" strip, subcut 4 - 11" x 6 1/2"

Cut 1 - 6 1/2" strip, subcut 8 - 6 1/2" x 3 1/2"

Fabric I - Cut 10 - 2" strips, sew end to end, then subcut 6 - 2" x 23 1/2", 2 - 2" x 69 1/2", and 2 - 2" x 41 1/2"

Fabric J - Cut 5 - 3 1/2" strips, sew end to end, then subcut 2 - 3 1/2" x 60 1/2" and 2 - 3 1/2" x 29 1/2"

Cut 1 - 6 1/2" strip, subcut 4 - 6 1/2" squares

Cut 2 - 3 1/2" strips, subcut 8 - 3 1/2" x 6 1/2"

Cut 5 - 2" strips, sew end to end, then subcut 2 - 2" x 58 1/2" and 2 - 2" x 26 1/2"

BINDING - Cut 9 - 2 1/4" strips, sew end to end and press in half

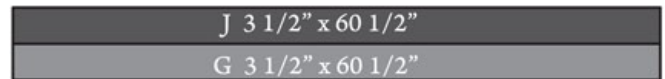
2. Sew **J** 2" x 58 1/2" to the **SIDES** of the quilt center, then sew **J** 2" x 26 1/2" to the **TOP** and **BOTTOM**.

3. Make 2 **SIDE** borders by sewing 2 **G** 11 1/2" x 6 1/2" 2 **G** 11" x 6 1/2", and 3 **E** 6 1/2" squares together according to the diagram on the next page, then sew borders to the **SIDES** of the quilt. Next, sew **B** 4 1/2" x 38 1/2" to the quilt's **TOP** and **BOTTOM**.

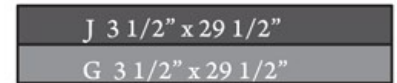
4. Sew **I** 2" x 69 1/2" to the **SIDES** of the quilt, then sew **I** 2" x 41 1/2" to the **TOP** and **BOTTOM**.

5. First, sew **J** and **G** 3 1/2" strips side by side according to the diagrams. Next, sew a 6 1/2" pair to both ends of the long strip sets. Pay attention to the direction of **G** according to the cover picture. Sew the longer pieced strips to the **SIDES** of the quilt. Next, sew a **J** 6 1/2" square to both ends of the shorter pieced strips, then sew to the **TOP** and **BOTTOM** of the quilt according to the diagram on the next page.

make 2



make 2



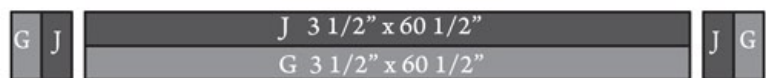
J 3 1/2" x 6 1/2"

make 8

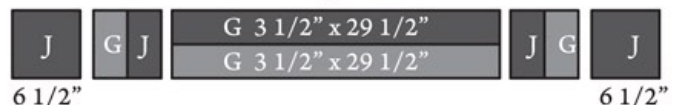


G 3 1/2" x 6 1/2"

make 2 - **SIDES**



make 2 - **Top and Bottom**

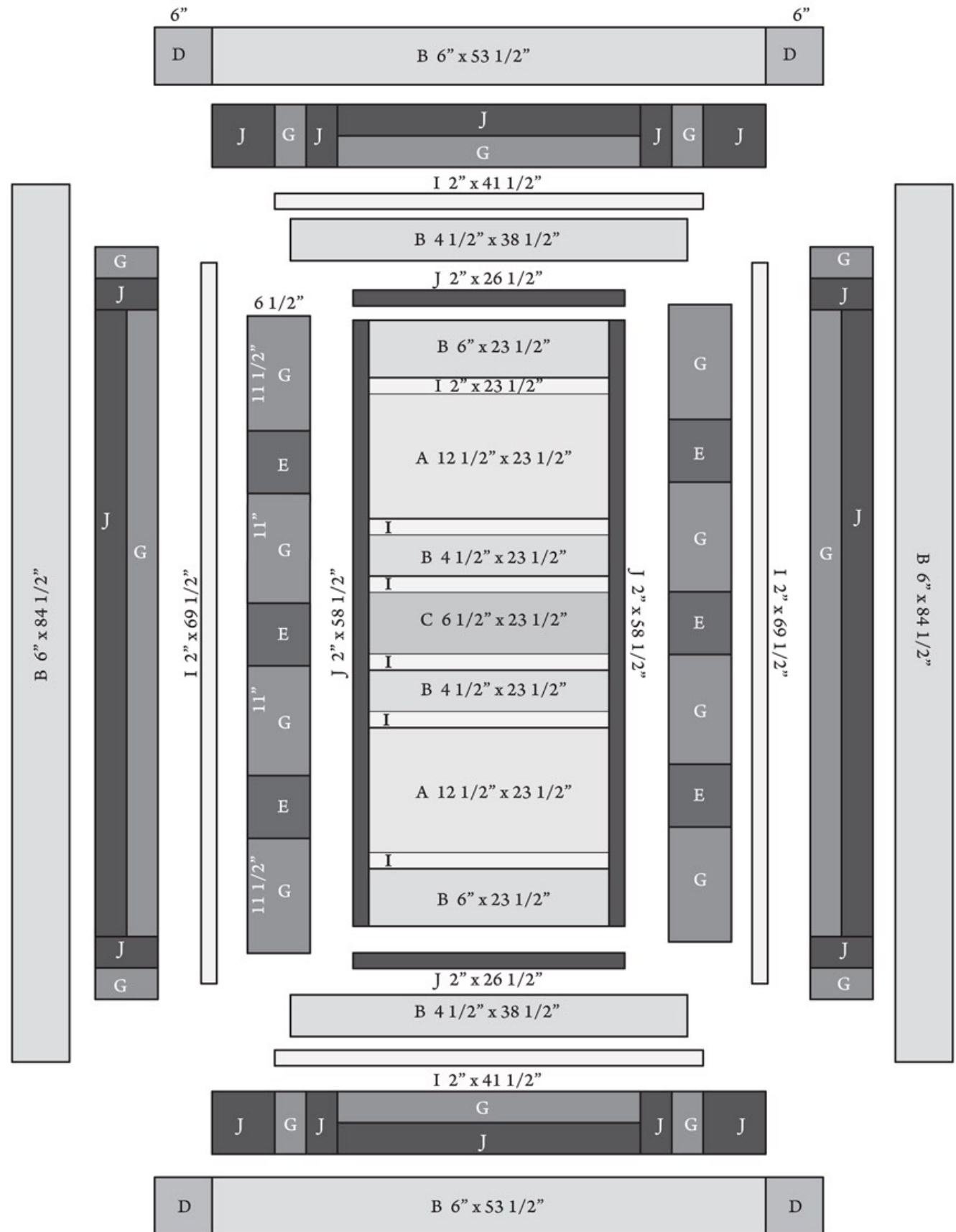


2. Piecing Order:

1. Sew quilt center first by sewing 2 **A** 12 1/2" x 23 1/2", 2 **B** 6" x 23 1/2", 2 **B** 4 1/2" x 23 1/2", and 1 **C** 6 1/2" x 23 1/2" alternating with 6 **I** 2" x 23 1/2" according to the diagram on the next page.

6. Last, sew **B** 6" x 84 1/2" to the quilt. Next, sew **D** 6" squares to both ends of 2 **B** 6" x 53 1/2", then sew to the quilt's **TOP** and **BOTTOM**.

7. The Twin Quilt measures approximately 64 1/2" x 95 1/2". Make backing (**Fabric I**) at least 8" larger than the top. Layer and baste top, batting, and backing together. Quilt as desired. Attach binding (**Fabric J**) and enjoy!!



Wall Hanging Instructions

approximate size: 33" x 26"

1. Cut the following:

* Directional Fabrics

***Fabric A** - Cut 1 - 16 1/2" x 23 1/2" (center design evenly according to the cover picture)

Fabric C - Backing - Cut 1 - 26 1/2" length x 33 1/2" width

***Fabric F** - Cut 1 - 4 1/2" x 33 1/2"

Cut 1 - 11" x 4 1/2"

Cut 1 - 8" x 4 1/2"

***Fabric H** - Cut 1 - 4 1/2" x 33 1/2"

Cut 1 - 11" x 4 1/2"

Cut 1 - 8" x 4 1/2"

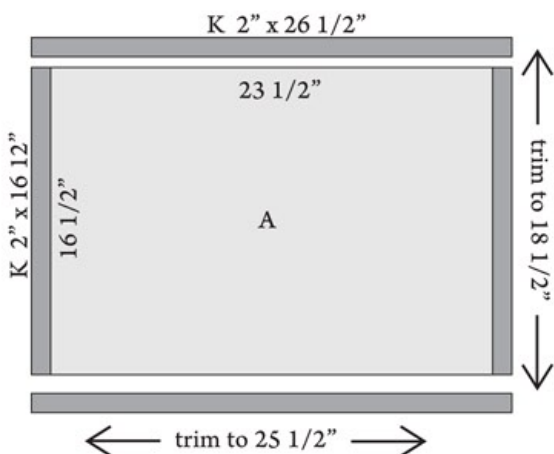
Fabric K - Cut 3 - 2" strips, subcut 2 - 2" x 16 1/2" and 2 - 2" x 26 1/2"

Batting - Cut 1 - 26 1/2" x 33 1/2"

*Directional fabrics

2. Piecing Order:

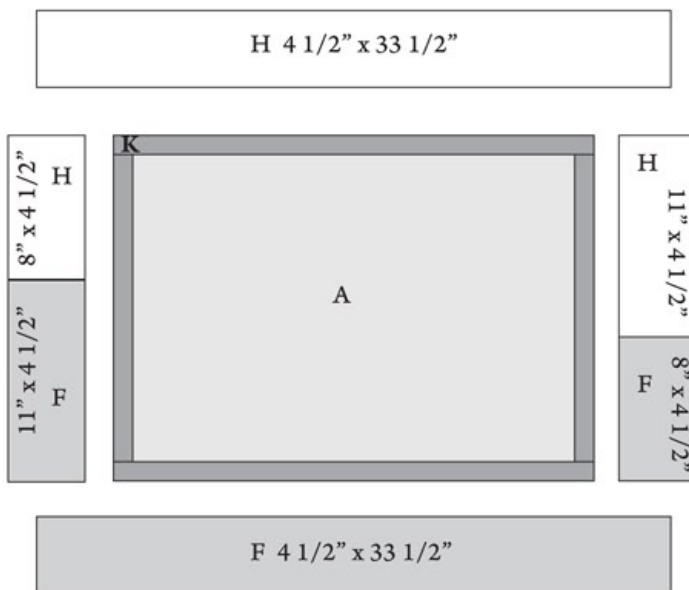
1. Sew **K** 2" borders around **A** 16 1/2" x 23 1/2", SIDES first, then TOP and BOTTOM borders according to the diagram. Then trim center block to measure 18 1/2" x 25 1/2"



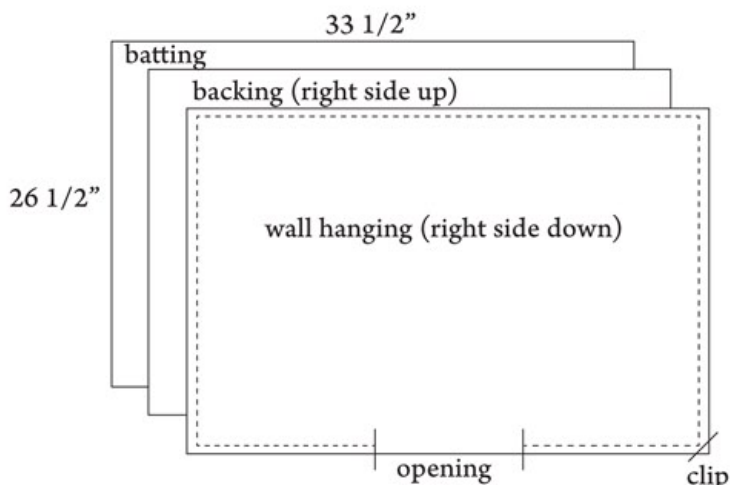
2. Sew **H** 8" x 4 1/2" and **F** 11" x 4 1/2" rectangles together, then sew to the LEFT side of the center block.

3. Sew **H** 11" x 4 1/2" and **F** 8" x 4 1/2" rectangles together, then sew to the RIGHT side of the center block according to the diagram.

4. Sew **H** 4 1/2" x 33 1/2" to the TOP and sew **F** 4 1/2" x 33 1/2" to the BOTTOM of the Wall Hanging.



5. Layer batting, backing (right side up), and wall hanging (right side down). Match raw edges and secure layers with pins. Stitch 1/4" around the outer edge, leaving approximately 10" open in the middle of the bottom for turning. Clip corners and turn right side out. Press. Stitch opening closed. Topstitch 1/4" from edge around the wall hanging to create faux binding. Add optional quilting and enjoy!!



Pillowcase Instructions (set of 2)

approximate size: 31" x 20 1/2" each

1. Cut the following:

* Directional Fabrics

*Fabric D - Cut 1 - 42" x 26 1/2"

*Fabric E - Cut 1 - 42" x 26 1/2"

Fabric I - Cut 2 - 1 1/2" strips

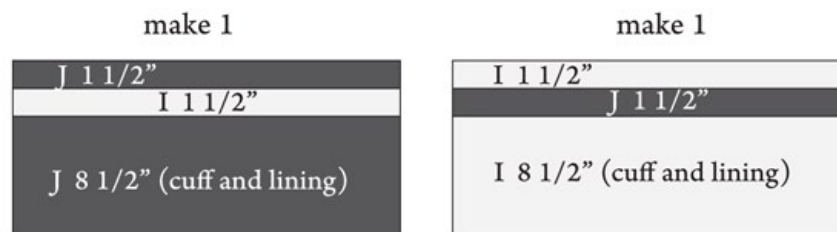
Cut 1 - 8 1/2" strip (cuff and lining)

Fabric J - Cut 2 - 1 1/2" strips

Cut 1 - 8 1/2" strip (cuff and lining)

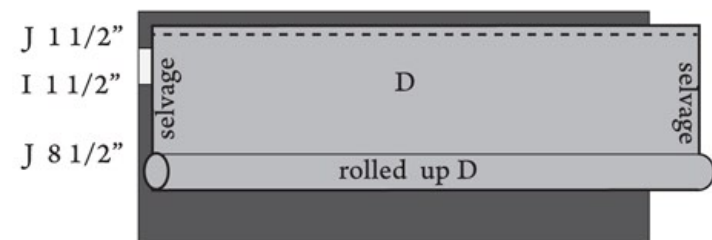
2. Piecing Order:

1. Make cuff and cuff lining by sewing J 1 1/2", I 1 1/2", and J 8 1/2" strips side by side for 1 pillowcase. Sew I 1 1/2", J 1 1/2", and I 8 1/2" strips together for the 2nd pillowcase.



2. Next, layer the following: 1) cuff strip set with 1 1/2" strip at the top, right side up, and 2) pillowcase body - D or E, right side down. Line up raw edges even with the 1 1/2" strip and pin layers together. Next, roll the body of the pillowcase (D or E) up from the bottom into a tube until the cuff is exposed. Then fold the bottom of the cuff over the rolled fabric so 3 layers of raw edges are even at the top. Stitch all 3 layers together and backstitch to secure seam. Repeat for 2nd pillowcase.

3. Pull the main fabric out of 1 end of the tube. You should now have the pillowcase cuff sewn with no exposed seams. Press.

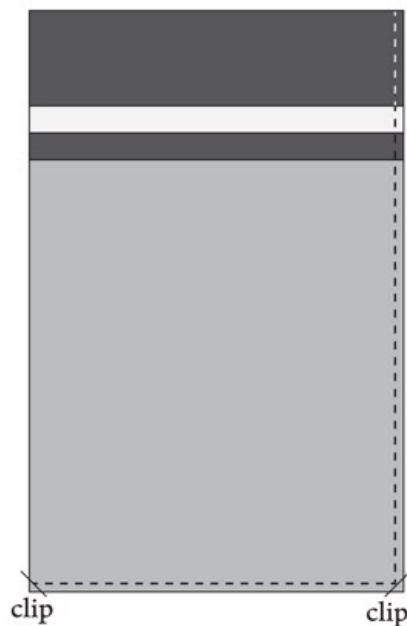
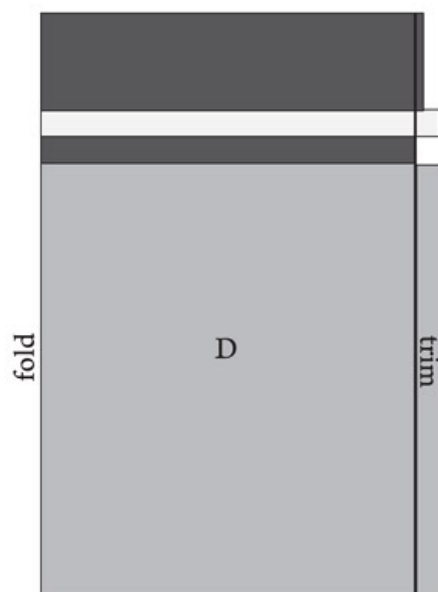


fold over rolled up D and line up with top raw edges of J and D

4. Fold the pillowcase in half lengthwise with wrong sides together. Straighten the edges and trim all selvages.

5. With pillowcase still folded (right side out) in half, stitch along the side and bottom edges of the pillowcase with a scant 1/4" seam. Backstitch at the beginning and end of the seam. Clip corners and trim any loose threads. Turn pillowcase wrong side out and press.

6. Take a slightly larger 1/4" seam (or even a 1/2" seam) and sew the side and bottom seam again, enclosing the raw edges of the first seam. Turn pillowcase right side out and press. Repeat for 2nd pillowcase. Enjoy!!



Q1605

Project Sheet - Q550-134-550

Mustang Meadows

by Nancy Glazier



A 51751-247S 24" x 43" panel

T 2/3 yard (1 panel)

W 2/3 yard (1 panel)



B 51752-472S 24" repeat

T 2 5/8 yards



C 51753-412S

T 3/8 yard

W 7/8 yard (backing)



D 51754-712S

T 1 1/4 yards



E 51755-129S

T 1 1/4 yards



F 51756-258S

W 5/8 yard



G 51756-777S

T 1 5/8 yards



H 51757-144S

W 5/8 yard



I Comp. Q1402-26035-552

T 1 1/8 yards (piecing)

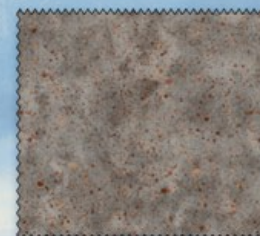
T 5 7/8 yards (backing)



J Comp. Q1080-31588-222

T 2 1/3 yards

(includes binding)



K Comp. Q1080-31588-928

W 1/4 yard

Twin Quilt 64" x 95" And 2 Pillowcases

Wall Hanging 33" x 26" - no binding

