

Rae-Bon Sew & Quilt Shop

SPOOLS OF NEWS

September 2021

for the sewist in the know

APPLIQUE: HUMBLE BEGINNINGS TO SHOWSTOPPING QUILTS

Applique started as a way to strengthen worn areas of clothes or patch holes to extend the life of clothes. While it can still be used this way and even add a bit of flair to your ensemble, it is so much more than that. Applique is a great way to create shapes and details that would be near impossible with traditional piecing. Applique can be used on quilts, table runners, decorative canvases, really any where you can use fabric. There are a couple different types of applique. In this article we'll be comparing and contrasting needle turned hand applique and fusible applique.

With needle turn hand applique, all of your raw edges are completely hidden. Hand stitching is used to attach the applique to the background. These stitches are not visible from the right side of the project. These applique pieces tend to have a slight amount of loft to them which can add a nice textural element to your final project. All of this hand stitching does mean the applique process takes quite a bit longer than fusible applique by machine.

Fusible applique is a quicker alternative. A fusible web is fused to the back of your fabric and then the shape is cut out. The fusible web seals the edges of your fabric so there will be minimum fray. Different brands of fusible web come in different weight. Light weight fusible webs (like Soft Fuse) do not change the hand of the fabric too much

where thicker weights (like Heat n Bond) can make your finished project feel a bit stiff. Once the applique is fused in place, the fabric can be stitched done by machine to ensure a long lasting bond. You can use a straight stitch, blanket stitch, or any decorative stitch. If you prefer, you can also skip the stitching all together.

The same pattern can be used for either technique. If you are doing fusible applique, you would trace the pattern onto fusible web. The final design will be reversed, so if the pattern designer did not provide a reverse pattern you will want to do this when tracing. With needle turn hand applique, freezer paper or wash away applique paper should be cut to the exact shape of the pattern (again the final design will be reversed) this is then fused to the backside of applique fabric. The applique fabric should then be cut about a 1/4" larger than the template to allow for a seam allowance to be turned.



Our newest block of the month, Easton Loop West, will begin September 1 and features appliqued houses, clouds and trees. Jennifer has some great tutorial videos planned to help you along the way with this block of the month. See page 3 for more details. We hope you'll join her on this journey to create. The Guide to Gadgets this month features some of her favorite tools for applique (both hand and fusible).

Store Hours: Monday-Friday: 10am-5:30 pm • Saturday: 10am-4pm • Sunday: Closed
Closed Monday, September 6 for Labor Day

3060 25th St SW Fargo, ND • 701-433-7203 • www.rae-bon.com • reddoor@rae-bon.com

Guide to Gadgets

making your life easier one gadget at a time

Glow Premium by CutterPillar

The Glow Premium Light Table makes it easy to trace your patterns. Plus lay your appli-fuse mat on top to easily arrange your applique pieces.

There are three different illumination levels on this super thing light table. The Glow Premium also comes with a non-slip self healing cutting mat. Best of all it has a rechargeable battery allowing you to use the light table for 3-4 hours without being plugged in. The lighted area is 12" x 16" and the board



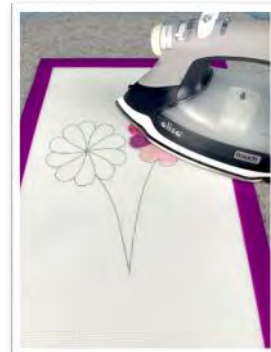
Applipops by Ellen's Quilts II

Create perfectly turned circles every time in 90 seconds. The rings are designed as a template-free applique system to be used with quilting weight cotton. Wool, upholstery fabric, or silk are not recommended. Applipops are a ring system. It takes two Applipops to make one perfect circle. Applipops make the most sense when seen in action ([click this link to see a video](#)). This pack contains 10 rings to make 8 Different Circle Sizes: 0.375", 0.5", 0.75", 1", 1.25", 1.5", 1.75", 2" **\$39.99**



Appli-Fuse Mats by Gypsy Quarter

Place the applique design diagram under the Appli-Fuse Mat. The mat is transparent so cut applique shapes can be placed perfectly. The mat is heat resistant so press multiple layers together. The layered applique can now be picked up as one continuous piece. Small divots in the mat allow the glue to pool when heated and then harden right back in place. This means you won't have any seepage of glue from the design and your edges remain crisper. **Multiple Sizes Available**



Wash Away Applique Sheets



Wash Away Applique Sheets make it easy to do needle turn applique. Draw or print your applique pattern on to the sheets. Cut out the shape and fuse to the wrong side of your fabric (the sheet comes with the fusible already attached). Sew your applique in place and when you're all done throw your project in the laundry

and the wash away applique sheet washes right away. Each package contains 25 - 8.5" x 11" sheets. **\$26.99**

Water Soluble Glue Pen by Sewline

A water-soluble blue glue that dries clear is a quick, convenient way to hold fabrics for sewing. These pens are especially handy for hand applique as you can temporarily glue the raw edges of the fabric to the wash away applique sheet. The glue pen can also be used to hold the pieces on the background until you hand sew the pieces in place. Once glued, the fabric pieces can be pulled apart, so not to worry if they are misplaced or need to be adjusted. Easily refillable-refills available separately. **\$7.99**





APPLIQUE BLOCK OF THE MONTH EASTON LOOP WEST

Easton Loop West designed by Kori Turner-Goodhart of Olive Grace Studios was inspired by the row houses of Columbus, Ohio. The quilt is primarily hand applique. If you'd prefer you could use fusible applique instead. The pattern calls for hand embroidery for the detailing, but we used a triple stitch on our machine to speed up the sewing a bit. We also used cork on the trees to add a bit more texture to the quilt.

This quilt is a great way to learn different applique techniques including needle turn hand applique, stitch and flip, and fusible raw edge applique. Each month Jennifer will have a technique video to guide you on the different techniques. The applique on this quilt may seem a bit

overwhelming, but it's all broken down into small manageable sections each month.

The first month you'll receive the entire pattern and fabric for three houses. Each month you'll receive additional fabric and notes on the section to be completed. By the end of six months, your entire quilt top will be done!

54" x 60"

Starts September 1

6 month program

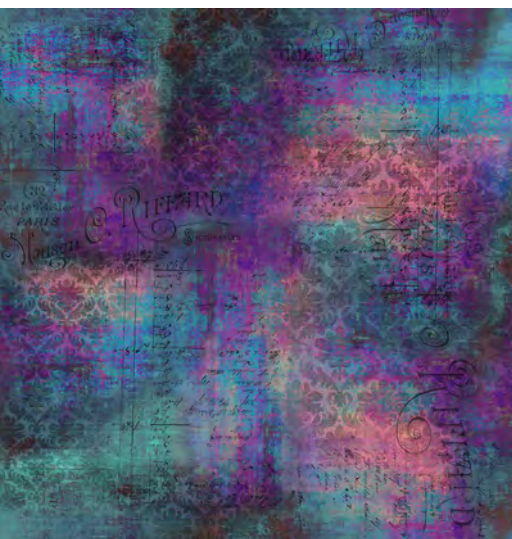
The monthly fee is \$30. Over the six months you will receive the pattern, cork, fabric for top and binding, and buttons (door knobs).



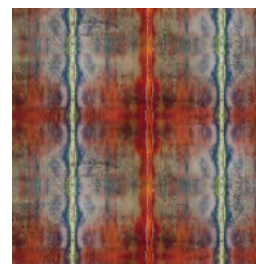
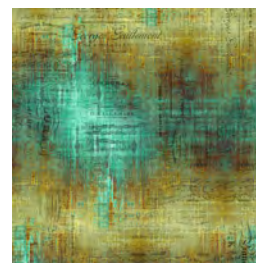
FANCY THAT
DESIGN HOUSE

SONG BOOK

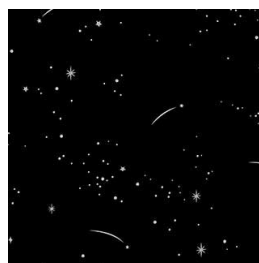
a sampling of
NEW FABRIC
THAT just ARRIVED

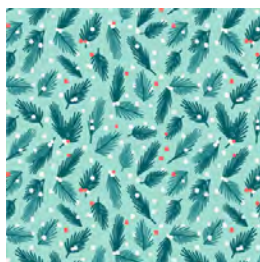
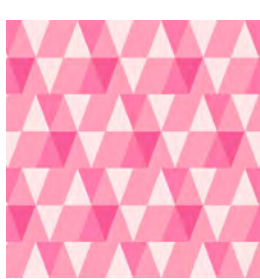


TIM HOLTZ
ABANDON 2



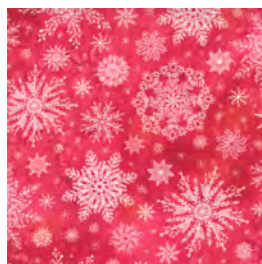
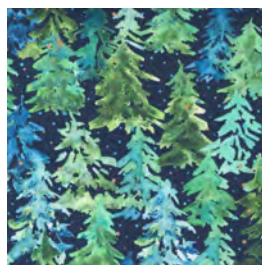
ESTHER FALLON LAU
**FOREST
FABLE**



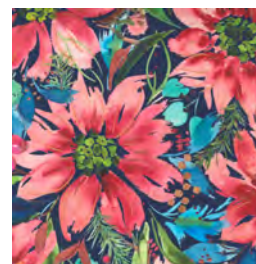
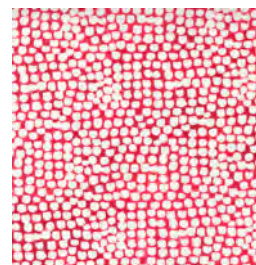


DANA WILLARD
PEPPERMINT

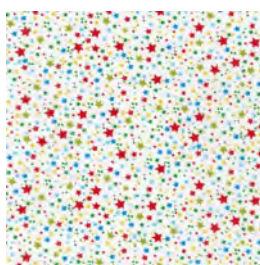
a sampling of
NEW CHRISTMAS FABRIC
THAT *just* ARRIVED



CREATE JOY PROJECT
STARFLOWER CHRISTMAS



**HOW THE
GRINCH
STOLE
CHRISTMAS**



QUILT MARKET FINDS!



Preorder your box of our top
10 Quilt Market Finds!

Each year Jennifer & Sandy travel to Quilt Market to see all the latest and greatest fabric, notions, patterns, and more at Quilt Market. They're going to put together a box of their top 10 new items! Be one of the first to receive all these new goodies!



Quilt Market Finds is \$99 per box. A limited number of boxes are available! **Orders must be in by Friday, October 15 unless we sell out sooner.**

We are aiming for boxes to be available for pickup (or shipping) at the end of November. As you know production and shipping has been crazy this year so we can make no guarantees. We'll do our best to have Quilt Market Finds ready at the end of November, but please be patient with us if we are not able to meet that date.

The contents of the box are a surprise (to you and us!). To give you an idea of what to expect, we previously offered a Quilt Market Finds for the Spring 2019 Market. It included a silicone iron rest, oil cloth fat quarter, two patterns, mini duckling applique scissors, a mini charm pack, a pleated log cabin ruler, a hexi stitchery frame to make your own jewelry, a jelly roll sasher, snag repair needle, and SewTites Mixer. We aim for a variety of items sure to inspire your creativity.

*Watch Us Live
on Facebook!*

**TWO NEW DEMOS
EVERY WEEK!**

Wednesday @ 3 pm
Friday @ 3 pm



SEW BUSY

3 Day Sewing Event

STITCHIN

\$299.99

Includes
all Fabric & Lunch



September
9-11, 2021

10 am - 5 pm

Country
Inn & Suites

Y'all Thready for This?

We've got three days packed with sewing fun! You've watched Jennifer's Facebook demos and now is your chance to take a class with her in person with some of her original patterns. You'll create four projects, learn new techniques, and have spools of fun with friends. Get right to the sewing - all your fabric is included and precut! We want these projects to suit your tastes, so you'll get to make a few color choices when you sign up. Lunch will also be provided. Just bring your sewing machine and some basic sewing supplies (supply list handed out at registration).

Don't be Spoolish; Sign up Today!

[Sign Up](#)

BRING YOUR OWN PROJECT

QUILT RETREAT

**SEPTEMBER 30-OCTOBER 3, 2021
ST. FRANCIS RETREAT CENTER
HANKINSON, ND**



Come join us for some fun and laughter and get some unfinished projects done! All meals will be provided. Each quilter will get a 6ft table, great lighting, and free Wi-Fi. Housing and linens are included in the cost.

Cost: \$240.00 per person for double/triple room
(Please give roommate requests when registering)
\$270.00 per person for single occupancy

Payment must be made in full to reserve your spot.
No refunds are available after registration.

SEPTEMBER 2021

Sun	Mon	Tue	Wed	Thu	Fri	Sat
			1	2	3 Embroidery Lab 1 - 4 pm	4 Open Sew 10 am - 4 pm
5	6 Shop Closed for Labor Day	7 Open Sew 10 am - 5 pm	8 Beginning Quilting Session 1 1 - 4 pm or 6 - 9 pm	9 SewBusy Stitchin 10 am - 5 pm Country Inn & Suites	10 SewBusy Stitchin 10 am - 5 pm Country Inn & Suites	11 SewBusy Stitchin 10 am - 5 pm Country Inn & Suites
12	13 Beginning Sewing: Patchwork Tray 1 - 4 pm or 6 - 9 pm	14 Sew, What's New? 1 pm or 6 pm	15 Beginning Quilting Session 2 1 - 4 pm or 6 - 9 pm	16 Modern Serged Table Runner 10:30 am - 4 pm	17 Open Sew 10 am - 5 pm Valley Shop Hop	18 Youth Sew: Cupcake Coin Purse 1 - 4 pm Valley Shop Hop
19	20 Valley Shop Hop	21 Rope Basket 11 am - 4 pm Valley Shop Hop	22 Beg. Quilting Session 3 1 - 4 pm or 6 - 9 pm Valley Shop Hop	23 Open Sew 10 am - 5 pm Valley Shop Hop	24 Valley Shop Hop	25 Take a Stand 10:30 am - 4 pm Valley Shop Hop
26	27 Edge to Edge Quilting 1 - 5 pm	28 Cosmo Quilt 10:30 am - 5 pm	29 Beginning Quilting Session 4 1 - 4 pm or 6 - 9 pm	30		

CLASS POLICIES

Call, visit our website, or stop in to sign up and pay for the class of your choice. Class fee is due when you register.

The class supply list will be available when you register and pay for the class. Supplies are not included in the class fee unless otherwise specified. Please have supplies purchased before class. Kits required are available at the store. No photocopied or sharing of patterns or books will be allowed in classes.

Please be setup and ready to begin class at the specified time.

We consider your enrollment to be a commitment to take the class and we in turn make a commitment to the instructor. No cancellations are allowed on classes. Thank you for not asking us to make exceptions.

Your sewing machine or serger must be in top working condition before you arrive at class. Students whose equipment is not working properly disturb and slow down the class. We service all brands of machines and sergers so come see us prior to the start of the class.

CLASSES

BEGINNING QUILTING

Wednesday, September 8, 15, 22, & 29:
1:00-4:00 pm or 6:00-9:00 pm

Sign Up

Do you want to learn to quilt or improve your skills? This is the class for you; no experience needed. At the end of the 4 sessions, you will have learned the basic skills of quilt making: fabric selection, rotary cutting, accurate piecing, quilting, and binding. In the first class, we'll be discussing tools and selecting fabrics. A 20% discount will be given on supplies purchased during the first class. We want to make sure your quilt is completed at the end of the four sessions, so there will be homework each week. Bring your own machine. Class fee is \$75 plus supplies and book.



BEGINNING SEWING: PATCHWORK TRAY

Monday, September 13:
1:00-4:00 pm or 6:00-9:00 pm

Sign Up

If you have little to no sewing experience, this class is for you! In this class, you'll stitch up two patchwork trays while learning basic machine sewing skills, a shortcut to piecing squares, and how to achieve crisp corners. The class fee is \$30 and includes all fabric, supplies, pattern, and use of a Baby Lock Sewing Machine. You'll be able to make the patchwork tray suit your décor by selecting your own fabric. Class is open to those 16 and older.



COSMO QUILT

Tuesday, September 28:
10:30 am–5:00 pm

Sign Up

Does sewing curves scare you? Cast those fears aside with the Cosmo Quilt. Jennifer will show you how to improvise the blocks, sew the curve, and then trim everything down to the perfect size. Purchase of the Cosmo Quilt Kit is required for class. Class fee is \$10 and includes precut mylar templates for the curved shapes.

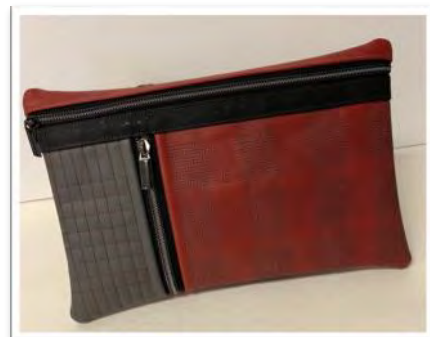


EMBROIDERY LAB: HATCH PURSE

Friday, September 3: 1:00 pm-4:00 pm

Sign Up

The Hatch Purse from Sweet Pea is so classy looking but very functional with two zipper pockets. The entire bag is made in the hoop with just a teensy bit of hand sewing once it is turned right side out. Three different sizes are available (depending on your hoop size): 6x10, 7x12, and 8x12. All embroidery machines welcome! The design is available in the following formats: DST, EXP, HUS, JEF, PEC, PES, VIP, VP3, and XXX. The class fee is \$15 for the stabilizer and the embroidery file. An optional kit with the leather, cork, lining fabric, and zippers is available for \$21.



EDGE TO EDGE QUILTING

Monday, September 27:
1:00-5:00 pm

Sign Up

This technique is super fun and easy to do. Everyone will think you had your quilt done on a long arm. Bring your embroidery machine and a 6" x 10" or larger hoop. You must bring the book "Edge to Edge Quilting on your Embroidery Machine" by Amelie Scott Designs. Class fee of \$75 includes quilt sandwich and thread. Class is limited to 4 people.



ROPE BASKET

Tuesday, September 21:
11:00 am - 4:00 pm

Sign Up

Are you looking for a way to use up scraps? Turn them into coil baskets! Claudia will show you how to use rope, scraps, and your sewing machine to create a basket. She will also have lots of samples to show you variations on the basic basket. The class fee is \$30 and includes the cotton rope needed for your basket. A supply list will be give out at registration.



MODERN SERGED TABLE RUNNER

Thursday, September 16: 10:30 am-4:00 pm

Sign Up

Learn some create techniques using your serger. If you have a Baby Lock eight thread serger you will learn to use the chain stitch, flat lock, and cover stitch. We will be using the lace applicator, $\frac{3}{4}$ belt loop binder, and the quilt bar. We'll discover how great fusible thread is and put on our binding with the serger. If you have a four thread serger, we'll adapt the pattern a bit and use the flat lock stitch and ladder stitch. Class fee is \$20 plus supplies.



COMING UP...

Let's learn to use those sergers to their full potential! Each month we'll have a new serger class for you. Coming up in October, we'll be making a 3 Pocket Serger Travel Bag by Nancy Bednar. You'll learn rolled hem seaming, mini piping, chainstitch quilting, overlock zippers, serger mitered binding, and serging on sticky fabrics.



YOUTH SEWING: CUPCAKE COIN PURSE (AGES 8-15)

Saturday, September 18: 1:00-4:00 pm

Sign Up

No sewing experience needed! Jennifer will teach you how to use a sewing machine while you stitch up a little pouch. We'll be sewing on felt this month, inserting a zipper, and adding some embellishments. Pick your own colors to create a uniquely you pouch. Class is limited to the first 6 students.

The class fee of \$25 includes all project supplies and use of a Baby Lock machine.



TAKE A STAND

Saturday, September 25:
10:30 am - 4:00 pm

Sign Up

Stand-up totes in two sizes have an easy-to-install zippered top that opens wide for easy access to the contents. Each Take A Stand tote features an adjustable, detachable carrying strap and plenty of room for supplies and more. Two zippered pockets on the outside of the tote and two inner mesh pockets keep everything organized and easy to view.

Refer to the pattern to quilt your fabric before arriving at class, so you can get right to bag assembly! The class fee is \$20 plus supplies and the pattern. A supply list will be handed out at registration.



SEW, WHAT'S NEW?

Tuesday, September 14:
1:00 pm or 6:00 pm

New items are always arriving at Rae-Bon Sew & Quilt Shop! Stop by each month for a fun filled social hour and show of everything new (fabric, notions, machines, etc.).

Receive a 10% discount on any new items highlighted that day. Plus bring whatever you've been working - everyone loves a good show and tell.



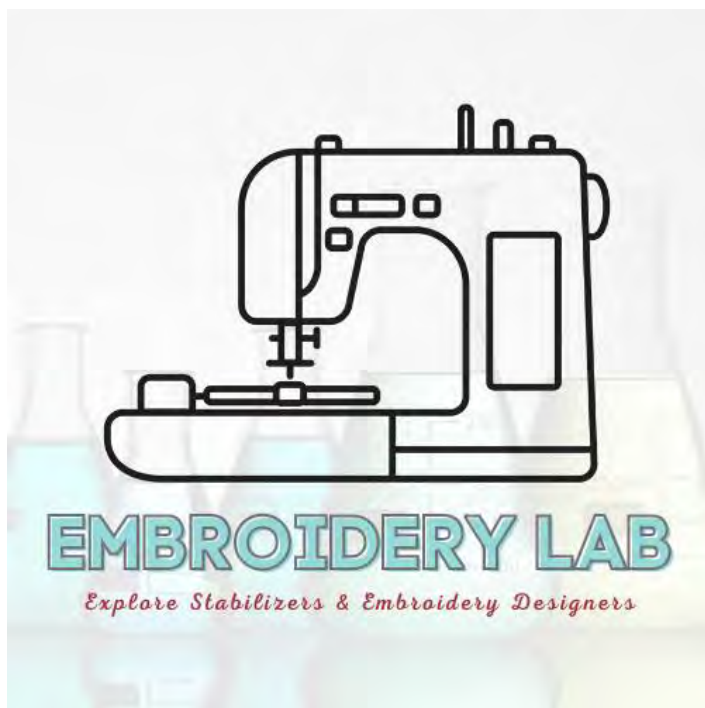
OPEN SEW

Bring whatever project you'd like to work on and join your friends (or make new ones). We'll provide irons and the space to work. You bring your project and any supplies you need.

Sign up is required to reserve your spot as space is limited. They usually fill up fast, so call today!



Tuesday, August 17: 10 am - 5 pm
Saturday, August 21: 10 am - 4 pm
Friday, August 27: 10 am - 5 pm
Saturday, September 4: 10 am - 4 pm
Tuesday, September 7: 10 am - 5 pm
Friday, September 17: 10 am - 5 pm
Thursday, September 23: 10 - 5 pm



Are you ...

- ♦ **intimidated by the number of stabilizers out there for embroidery?**
- ♦ **looking to try out some new Embroidery Designers but aren't sure where to look?**
- ♦ **looking to stitch up fun projects while making new friends?**

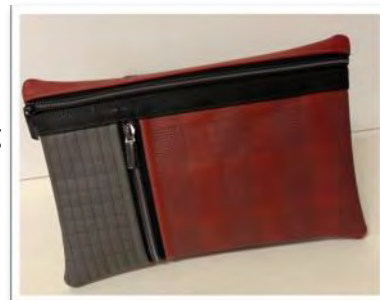
If you answered yes to any of these questions then Embroidery Lab is for you! Each month we'll help you stitch up a new embroidery project. A range of stabilizers will be used so you'll have an opportunity to test out different products and best of all your stabilizer is included with the class fee so need to buy a

whole roll (unless you want to make the project again!). Each month we'll feature a different type of project and a different designer. We think this month's purse is super cute, but if it's not for you keep an eye out in October for a completely new project. Sign up for each month is individual, so just sign up for the projects you like. Various hoop sizes will be needed based on the size of the project.

EMBROIDERY LAB FOR SEPTEMBER: HATCH PURSE

Friday, September 3 from 1:00 pm-4:00 pm

The Hatch Purse from Sweet Pea is so classy looking but very functional with two zipper pockets. The entire bag is made in the hoop with just a teensy bit of hand sewing once it is turned right side out. Three different sizes are available (depending on your hoop size): 6x10, 7x12, and 8x12. All embroidery machines welcome! The design is available in the following formats: DST, EXP, HUS, JEF, PEC, PES, VIP, VP3, and XXX. The class fee is \$15 for the stabilizer and the embroidery file. An optional kit with the leather, cork, lining fabric, and zippers is available for \$21.



Sign Up

Valley Shop Hop

Back to Basics

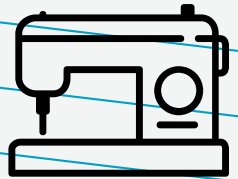
SEPTEMBER 17-25, 2021

Most shops are closed on Sunday, September 19.

Valley Shop Hop is going *Back to Basics* this year with demos of must have quilting tools at each shop. Pick up your passport at your first stop to get started. Then draw for a discount and get your passport stamped at each stop along the hop. Visit all nine shops and receive a 10 pack of rotary cutter blades as our thank you for hopping with us.

Participating Shops

3 Red Hens, St. Thomas
Comforts of Home Quilting & More, Jamestown
Designer Fabrics, Carrington
Embroidery Plus Quilt Shop, Grafton
Quilter's JEM, East Grand Forks
Mary's Quilt Market, Arthur
Rae-Bon Sew & Quilt Shop, Fargo
Sew On & Sew North, Langdon
Urban Couture/Quilted Ceiling, Valley City



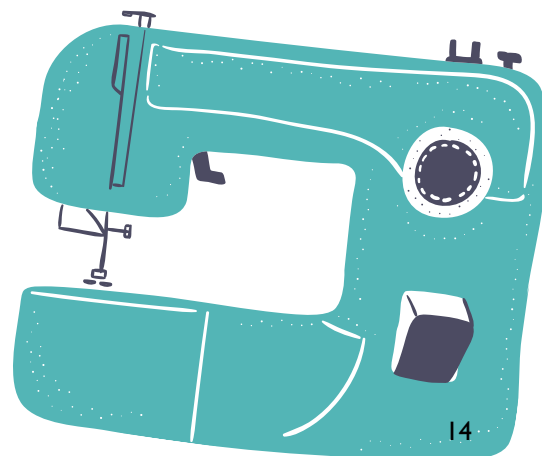


GO FAR IN THE

UFO MARATHON

*Don't Worry!
No Actual Running
...
Involved*

COMING SEPTEMBER 20



New Machines from Baby Lock are Arriving Soon!

Floor Models need to go which means a great deal for you!

Baby Lock Crescendo

Sewing & Quilting Machine

- Guide Beam for Sewing
- Color LCD Touch Screen
- Digital Dual Feed Walking Foot
- Never Miss Needle Threader
- 11.25" throat space
- Extension Table
- Push Button Features
- And More . . .



Baby Lock Flourish

Sewing & Embroidery Machine

- 6.25" x 10.25" Embroidery Field
- 181 Built in Embroidery Designs
- Color LCD Touch Screen
- On Screen Embroidery Editing
- Advanced Needle Threader
- Push Button Features
- And More . . .



Work Less

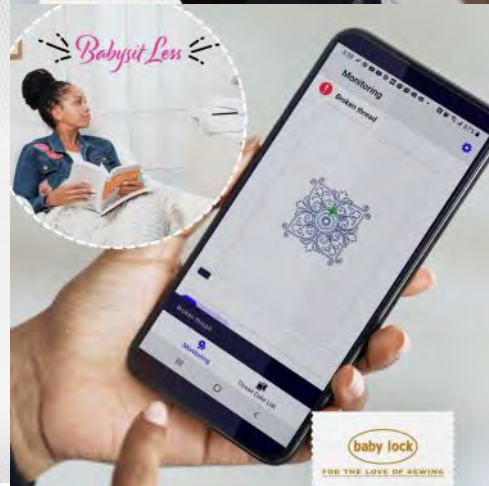
SEW MORE

With Baby Lock



baby lock

FOR THE LOVE OF SEWING



baby lock

FOR THE LOVE OF SEWING



Work Less

SEW MORE

With Baby Lock



baby lock

FOR THE LOVE OF SEWING

smarter™
BY PFAFF

Be Smart. Be Original.

SMARTER BY PFAFF™ – inspired and developed by the premier PFAFF® sewing machine brand

As Oscar Wilde said: “Be yourself; everyone else is already taken”.

With smart features and a unique design, the SMARTER BY PFAFF™ sewing machines are up to the challenge of letting you express your individuality at a price within reach.

Get your own SMARTER BY PFAFF™ machine and begin a sewing adventure focused on you:

Your uniqueness.

Your passion.

Your sewing.

New!



260c



DIRECT STITCH SELECTION



START/STOP FUNCTION



NEEDLE STOP UP/DOWN



INFORMATION SYSTEM DISPLAY



PRESSER FOOT UP SAFETY

Find more smart features at www.pfaff.com

smarter™
BY PFAFF

Be Smart. Be Original.

As Oscar Wilde said: “Be yourself; everyone else is already taken”.

With smart features and a unique design, the all-new SMARTER BY PFAFF™ sewing machines are up to the challenge of letting you express your individuality at a price within reach.

Choose one of the two SMARTER BY PFAFF machines, 160s or 140s, and begin a sewing adventure focused on you:

Your uniqueness. Your passion. Your sewing.

New



140s

160s

SMARTER BY PFAFF™ – inspired and developed by the premier PFAFF® sewing machine brand



INTEGRATED NEEDLE THREADER



6MM ADJUSTABLE STITCH WIDTH



PFAFF® ORIGINAL PRESSER FOOT SYSTEM



LED LIGHTS



HARD COVER

Find more smart features at www.pfaff.com

www.pfaff.com



©2013 C&H Licensing LLC. All rights reserved. PFAFF and SMARTER BY PFAFF are trademarks of C&H Licensing LLC.

— the best —
**BACK TO
 SCHOOL**
 sewing bundle



For a limited time,
 Save up to
\$4,500
 off the entire bundle
 with qualified trade*

BUNDLE INCLUDES:

- DESIGNER SAPPHIRE™ 85 Sewing and Embroidery Machine
- INSPIRA™ Medium Roller Bag
- HUSQVARNA®VIKING® Extension Table with Adjustable Guide
- Small Square Hoop



Designer Sapphire™ 85
 sewing and embroidery machine

get details

Offer valid August 1 - 31, 2021.

VIKING, KEEPING THE WORLD SEWING, INSPIRA and DESIGNER SAPPHIRE are trademarks of K/SIN Luxembourg II, S.à.r.l. HUSQVARNA and the "H" Crown Device are trademarks of Husqvarna AB and are used under license. ©2021 K/SIN Luxembourg II, S.à.r.l. All rights reserved. All pricing decisions are at the sole discretion of the retailer. No prior purchases. Valid at authorized HUSQVARNA®VIKING® retailers in USA. *Trade-in allowance may vary based on the condition, year, model and other determining factors of your trade-in machine.