

Rae-Bon Sew & Quilt Shop

SPOOLS OF NEWS

November 2020

for the sewist in the know

CHOOSING A THREAD-QUILTING THREAD

Our series on selecting thread continues with quilting thread. Like with all thread choices, you want to pick a high quality thread so you don't have excessive lint build up and your thread will remain strong over time. Lots of different threads will work for quilting, so once you've narrowed the list of options to high quality threads, you want to consider what look you want to achieve with your quilting. Should the thread stand out? Do you want the embossed look of quilting but the thread to be hidden? Should the thread be a contrasting color?

Thread weight plays a large part in determining the look of your quilting. A finer thread will blend in more with your fabric and be less visible than a thicker thread. The larger the weight, the finer the thread. Did you know the weight of a thread is actually based on thread length? So if a thread is 40 weight it means it takes 40 km of thread to weight 1 kilogram. If you had a 30 weight thread it would only take 30 km to make 1 kilogram.

A majority of the thread at Rae-Bon can be used for quilting both in your home machine or a long arm depending on the look you would like to achieve:

Invisafil (100 wt) is a very fine thread, so a neutral color will blend with almost any color fabric. It is a cottonized polyester so very strong with the feel and look of cotton. Invisafil is also great for dense quilting because it won't add a lot of extra bulk that would stiffen your quilt.

Tutti (50 wt) is a 3 ply Egyptian cotton thread. It is double-gassed to remove 80% of the lint (minimal lint in your machine!) It is available in 41 variegated colors and is one

of my personal favorite threads to quilt with because of all the gorgeous colors.

Aeroquilt (40 wt) is designed for longarm quilters both in size and strength. It is 100% polyester and designed to withstand the rigor of a longarm machine. Each cone has 3,000 yards of thread so it is the best way to buy a bulk amount of thread.

Monofil (40 wt) is a transparent thread. It comes in both clear (lighter fabrics) and smoke (darker fabrics). Because it is transparent you will not see a color but you will see the shine from the thread. I use this thread a lot for quilting when I don't want to select a color.

The three threads discussed in the October Newsletter (Mettler, Aurifil, and Quilter's Select) are also great for quilting again factoring in the weight and how much you'd like the thread to show.

Next month, we'll talk about embroidery threads which can also be used for quilting or machine embroidery. If you missed piecing thread, check out October's Newsletter.

This chart will give you a rough estimate of how much thread is needed for quilting.

Quilt Size	Light Quilting	Medium Quilting	Heavy Quilting
Lap/Crib	200 yds	400 yds	600 yds
Twin	400 yds	800 yds	1,200 yds
Queen	600 yds	1,000 yds	1,600 yds
King	750 yds	1,500 yds	2,000 yds

Store Hours: Monday-Friday: 10 am-5:30 pm • Saturday: 10 am-4 pm • Sunday: Closed
Rae-Bon will be closed on November 26.

3060 25th St SW Fargo, ND • 701-433-7203 • www.rae-bon.com • reddoor@rae-bon.com

Guide to Gadgets

*making your life easier
one gadget at a time*

Quilt Basting Gadgets



Wonder Pins by Clover

Wonder Pins are a revolutionary pin concept leveraging the benefits of both straight pins and safety pins into a single pinning tool. They are strong enough to pierce multiple layers but thin enough to go through fabric without leaving holes. You can open and close a wonder pin with one hand, so much easier for basting a quilt. **Package of 20 for \$18.99**

505 Spray & Fix Temporary Fabric Adhesive by Odif USA

505 Spray & Fix Temporary Fabric Adhesive is an odorless, colorless, stainless, spotless adhesive that does not gum up your needle. The temporary spray adhesive is great for basting your quilt sandwich together; no need to pin! It also can be used for embroidery projects when floating your embroidery item. The bond is repositionable a couple of times before it will loose it's sticky. The bond is temporary so just wash out or it will dissipate with fabric manipulation.

6.22 fl oz for \$14.99 or 12.4 fl oz for \$22.99



Free Fuse by Quilters Select

Free Fuse creates a semi-permanent bond between fabrics and batting. It's faster than pinning, but without the mess of a spray adhesive. Sprinkle free fuse over the batting and then add the fabric. Apply direct heat and pressure with an iron for at least 4 seconds. The bond is now set. Your needle won't have any trouble stitching through Free Fuse. **2oz. Shaker for \$19.99**



MOODY BLOOM

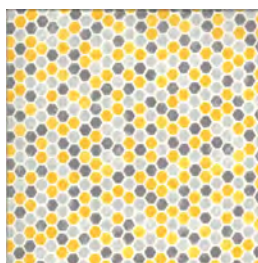
a sampling of
FABRIC ARRIVING
in November



BASIC GREY CIDER



DEB STRAIN BEE GRATEFUL



NOVEMBER 2020

Sun	Mon	Tue	Wed	Thu	Fri	Sat
1	2 Journey to Nebula: Candy Dish 1 - 4 pm or 6 - 9 pm	3 Everyday Tote 1 - 4 pm or 6 - 9 pm	4 Beginning Quilting Session 1 1 - 4 pm or 6 - 9 pm	5 Sewcial Hour 10 am - 5 pm	6	7
8	9 Cedar Mills BOM 1:30 pm	10 Journey to Nebula: Candy Dish 1 - 4 pm	11 Beginning Quilting Session 2 1 - 4 pm or 6 - 9 pm	12 Westalee Ruler 1 pm or 6 pm	13 KimberBell Embroidery Club Noon - 8 pm	14 Classic Carryall Tote 10 am - 4 pm
15	16 Journey to Nebula: Gazebo 1 - 4 pm or 6 - 9 pm	17 T-Shirt Quilt 10 am - 5 pm	18 Beginning Quilting Session 3 1 - 4 pm or 6 - 9 pm	19 Cork Wreath 1 - 4 pm	20 Sewcial Hour 10 am - 5 pm	21 Youth Sewing: Snowman Coasters Ages 8-15 1 - 4 pm
22	23 HoopSisters Tis the Season Noon - 8 pm	24 Journey to Nebula: Gazebo 1 - 4 pm	25	26 Happy Thanksgiving! <i>Shop Closed</i>	27	28
29	30 Intro. To Paper Piecing 1 - 4 pm or 6-9 pm		Dec. 2 Beginning Quilting Session 4 1 - 4 pm or 6 - 9 pm			

DECEMBER 2020

Sun	Mon	Tue	Wed	Thu	Fri	Sat
		1 Pocket Packers 1 - 4 pm or 6 - 9 pm	2 Beginning Quilting Session 4 1 - 4 pm or 6 - 9 pm	3 Sewcial Hour 10 am - 5 pm	4	5
6	7 Intro. To Fusible Applique 1 - 4 pm or 6 - 9 pm	8 Cork Wreath 1 - 4 pm	9	10 Westalee Ruler 1 pm or 6 pm	11	12

CLASS/EVENT POLICIES

Call or stop in to sign up and pay for the class/event of your choice. Class fee is due when you register. Phone registrations (701-433-7203) accepted only with a credit card payment.

The class supply list will be available when you register and pay for the class. Supplies are not included in the class fee unless otherwise specified. Please have supplies purchased before class. Kits required are available at the shop. No photocopied or sharing of patterns or books will be allowed in classes.

We consider your enrollment to be a commitment by you to take the class and we in turn make a commitment to the instructor. No refunds are allowed on classes or events. Thank you for not asking us to make exceptions.

Your sewing machine or serger must be in top working condition before you arrive at class. Students whose equipment is not working properly disturb and slow down the class. We service all brands of machines and sergers so come see us prior to the start of the class.

CLASSES

Please note Masks are Required at Rae-Bon Sew & Quilt Shop. This is especially important as the classroom is a small space. No exceptions will be made.

BEGINNING QUILTING

Wednesday, November 4, 11, 18, & December 2:
1:00-4:00 pm or 6:00-9:00 pm

Do you want to learn to quilt or improve your skills? This is the class for you; no experience needed. At the end of the 4 sessions, you will have learned the basic skills of quilt making: fabric selection, rotary cutting, accurate piecing, quilting, and binding. In the first class, we'll be discussing tools and selecting fabrics. A 20% discount will be given on supplies purchased during the first class. We want to make sure your quilt is completed at the end of the four sessions, so there will be homework each week. Bring your own machine. Class fee is \$75 plus supplies and book, *New Patchwork & Quilting Basics*.



CEDAR MILLS

Monday, November 9:
1:30 pm

Would you like to improve your accuracy as you stitch up the Cedar Mills Block of the Month? Each month we will demonstrate the technique and rulers used for the monthly block. We'll also provide modified fabric cutting instructions if you'd like to use the featured ruler. In November, we'll be reviewing using the Tucker Trimmer to cut Hourglass blocks and using the Square Squared tool for square in a square blocks.



CLASSIC CARRYALL TOTE

Saturday, November 14:
10:00 am - 4:00 pm

The Classic Carryall Handbag & Tote is beautifully simple, yet classically styled. The tote bag pattern features box corners, shiny hardware and straightforward construction techniques. The tote is pictured but you can make either size in class. Class fee is \$20. You will also need to purchase supplies and the pattern. Bring your own sewing machine.



CORK WREATH

Thursday, November 19: 1:00-4:00 pm
or Tuesday, December 8: 1:00-4:00 pm

Brighten up your home with a handmade wreath made from cork fabric! This is a great project for using up scraps and practicing stitching on cork and layering a variety of cork pieces. Class fee is \$20. You will also need to purchase supplies and the book, *Create with Cork Fabric*.



EVERYDAY TOTE

Tuesday, November 3: 1:00-4:00 pm or 6:00-9:00 pm

Shop in style with this handy tote bag. Do you have scraps from Jelly Rolls? This is the perfect project for using those leftover strips. Byannie's Soft and Stable gives the tote perfect body and style. Class fee is \$20. You will also need to purchase the pattern and supplies. Bring your own sewing machine. The class fee is waived for Sew Creative Club members.



HOOPSISTERS: TIS THE SEASON

Monday, November 23:
Classroom open from Noon - 8:00 pm

Join us to stitch the Tis the Season Projects. The class includes the ornament wall hanging, 3D Christmas trees, and mitten stocking. The classroom will be open from Noon-8:00 pm to stitch up the projects with friends. Kits are available upon request. Retreat fee is \$39.



INTRO TO FUSIBLE APPLIQUE: FLOWER GARLAND PILLOW

Monday, December 7: 1:00-4:00 pm or 6:00-9:00 pm

Applique allows you to expand your creativity and break out of the rigid lines of patchwork. In this class we'll explore fusible applique including types of fusible web and stitching options. Class fee is \$20. You will also need to purchase supplies and the book, New Patchwork and Quilting Basics. Bring your sewing machine.



INTRO TO PAPER PIECING: SPOOL NOTEBOOK COVER

Monday, November 30: 1:00 - 4:00 pm or 6:00 - 9:00 pm

Paper Piecing is a great way to obtain very accurate piecing especially with small pieces of fabric. Join us to learn how to paper piece or improve your skills while stitching up this spool notebook cover. Class fee is \$20. You will also need to purchase supplies and the book, New Patchwork and Quilting Basics. Bring your sewing machine.



JOURNEY 2 NEBULA: CANDY DISH

Monday, November 2: 1:00-4:00 pm or 6:00-9:00 pm
or Tuesday, November 10: 1:00-4:00 pm

The Candy Dish Pillow is a squishy and huggable matching set of throw pillows ready to add some comfort to you couch. Each pillow is 16" square. The pillow is made using two different shapes that can be cut from the Hex N More. Class fee is \$20. You will also need to purchase supplies and the pattern. The class fee is waived for Journey 2 Nebula participants.



JOURNEY 2 NEBULA: GAZEBO

Monday, November 16: 1:00-4:00 pm or 6:00-9:00 pm
or Tuesday, November 24: 1:00-4:00 pm

Gazebo Table Topper is a mesmerizing addition to any table. With an eye-catching pinwheel display, this kaleidoscope of delight is sure to enchant. Class fee is \$20. You will also need to purchase supplies and the pattern. The class fee is waived for Journey 2 Nebula participants.



KIMBERBELL EMBROIDERY CLUB

Friday, November 13:
Classroom Open from Noon - 8:00 pm

Can you believe it's the final month of KimberBell Embroidery Club?

Gift pockets are the perfect way to make someone's day! Stitch the Get Well Soon design with flexible foam and a sparkly bandage made of Silver Pink Dot Applique Glitter! Then tuck soup packets, tissues, and/or other gifts inside the pocket, attach a small or medium sweet tube with decorative ribbon, and give to a friend who is under the weather!



T-SHIRT QUILT

Tuesday, November 17:
10:00 am - 5:00 pm

Are the T-shirts you've been saving for their sentimental value starting to pile up? Making them into a T-shirt quilt is the perfect way to preserve them. During this class, you will learn how to turn your collection into a memory quilt. Pick out 12 of your favorite shirts, wash without fabric softener, and bring them to class. The design on the shirt should not be larger than 12" square. Important! Do not cut up shirts prior to class! Class fee is \$40. You will also need to purchase supplies. Bring your own sewing machine.



WESTALEE RULER

Thursday, November 12: 1:00 - 4:00 pm or 6:00 - 9:00 pm
Thursday, December 10: 1:00 - 4:00 pm or 6:00 - 9:00 pm

The Westalee Ruler club continues with the Ying & Yang on Card Trick Block in November and spin-e-fex 4 on the Carpenter's Star. Unfortunately we are no longer able to accept new members to the Westalee Ruler Club.

Remember to bring your sewing machine, extension table, Westalee ruler foot, two 8" square quilting sandwiches, Aurifil or Mettler thread, and a Frixion pen to class.

YOUTH SEWING: SNOWMAN COASTER

(AGES 8-15)

Saturday, November 21: 1:00-4:00 pm

These are the newest and cutest things to help keep you styling while you are snacking! The mug rug will have a winter theme, so come ready to spread some holiday cheer! You will learn quilting and binding.



Classes fill up fast and are limited to the first six students. Can't wait to see you! Class fee of \$25 includes all project supplies and use of a Baby Lock machine.

NEW OWNERS CLASS

Explore the features and stitches of your new sewing machine. You will stitch samples, learn the functions of your machine, and basic cleaning. Open to Baby Lock, Pfaff, and Viking owners. No charge for machines purchased at Rae-Bon; \$50.00 for others. Bring your machine, accessory feet, foot control, power cord, spool of thread, and bobbin.

SEWCIAL HOUR

Never enough time to get everything done? Join us to sew with friends (or make some new ones). The classroom is open for you to work on any unfinished projects (or start a new one).

Bring your machine and project to work on. Advance registration is required to reserve your spot.

Thursday, November 5 10 am-5 pm
Friday, November 20: 10 am-5 pm
Thursday, December 3: 10 am-5 pm



DON'T MISS OUT ON ALL THE DISCOUNTS!

BLACK FRIDAY BLOWOUT

Black Friday is Going Online!

Join us on Facebook Live at 11 am



**Shop on our Facebook page or
call the shop with your order.**

Friday, November 27, 2020



YEAR OF SAVINGS.

The Year of Savings is getting a makeover!

This year we'll be handing out a coupon card instead of a coupon book. You'll still get a coupon for every month of 2021 but it will fit conveniently in your wallet!

You know we usually have great sales in the shop on the Year of Savings Day. This year is no exception, except all the sales will be on Facebook! On Saturday, December 5, there will be sales on Facebook throughout the day. A schedule will be published as we get closer.

If you've been here for Year of Savings, you know it can get packed! We want to limit the number of people in the shop this year so please shop with us online or give us a call to take advantage of the specials. The way you get your coupon card will also be different! Everyone who purchases on Facebook will receive a coupon card with their order. One coupon book per household.

The sales will only be available online on Saturday and Sunday, but coupon cards will be available with purchase in the shop on Monday, December 7 and Tuesday, December 8.



ONLINE SALES
SATURDAY, DECEMBER 5

Pfaff Creative Icon Close Out

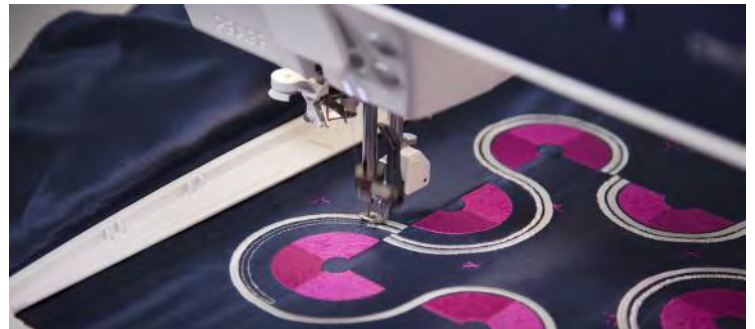


Customize your projects with 27 built-in embroidery techniques; 790 (42 exclusive) embroidery designs; and unique specialty stitches such as Radiant, Triple Ribbon, Floating, Lace and Off-The-Edge techniques.

View your entire workspace over the widest area possible (12.2" from needle to arm and 5.5" of height) regardless of project size and without any impediments in your line of sight. Plus, the PFAFF **creative icon** machine has positioned innovative lighting at the most beneficial points for viewing angles so well-designed it can accommodate any project.

Swipe, zoom, pinch, and personalize on the 10.1" full color screen. Create what you've always imagined with the largest, most customizable and intuitive tablet-like display.

Enhanced IDT: Expand your creative horizons with this legendary PFAFF feature. Now enhanced to be even better, our Integrated Dual-Feed Technology continues to improve by feeding on all types of fabrics for precise stitching and perfect seams every time.



The price is so good, we can only share it in person!



**Bundle Value
Up to \$5,500***

*Does not include
machine price

Koala Artisan Slimline Embroidery Studio

Koala Artisan Height Adjustable Creative Center

Exclusive Embroidery Design Collection from
Baby Lock Education Partner Zandra Shaw



or



and



Receive the choice of a **Koala Artisan Slimline Embroidery Studio** or a **Koala Artisan Height Adjustable Creative Center** with the purchase of a Solaris 2 Embroidery and Sewing machine. You'll also receive an Exclusive Embroidery Design Collection.



SOLARIS 2 EMBROIDERY AND SEWING MACHINE

- IQ Visionary™ Projector
- 10-5/8" x 16" Embroidery Field
- IQ Intuition™ - Monitoring
- IQ™ Designer
- End Point Setting for Sewing

*Purchase a Baby Lock Solaris 2 Sewing and Embroidery Machine at MSRP and receive a 60 Day Trial of online sewing classes

*bundle value dependent on Koala model chosen.

Koala studio includes base model only, any accessories or customization will be an additional charge.

See Koala retail price list for accessory and customization pricing. May not be combined with any other discounts.

Offer Valid in US only.



FOR THE LOVE OF SEWING

See an Associate for details.

Offer valid 8/6/20 - 9/30/20



Floor Model Specials

on select Viking Machines

Prices so good we can't advertise them!



NEW Designer Sapphire™ 85

Sewing and Embroidery Machine



- Packed with Accessories: 13 presser feet, including Interchangeable Dual Feed Foot, a Straight Stitch Plate with Sensor, and a Hard Case for safe storage
- Compatible with the optional Multi-Function Foot Control

Payments as low as **\$111/month***
with highly qualified trade**

*Your trade-in could be worth even more,
further lowering your payments.*

Plus...

**FREE Launch Bundle
Valued Over \$800*****

*Bundle includes a 3 Month
mySewnet™ SILVER Software
Subscription (\$75 value)
while supplies last*



October 1 - December 31, 2020

*Payments calculated at 0% Interest 72 months financing. **Trade-in allowance may vary based on the condition, year, model and other determining factors of your trade-in machine. ***With DESIGNER SAPPHIRE™ 85 purchase. All pricing decisions are at the sole discretion of the retailer. Limited time only. Valid at authorized HUSQVARNA®VIKING® retailers in USA. No prior purchases. VIKING, DESIGNER SAPPHIRE, DELUXE, EXCLUSIVE SENSOR SYSTEM and MYSEWNET are trademarks of KSIN Luxembourg II, S.à.r.l. HUSQVARNA and the "H" Crown Device are trademarks of Husqvarna AB and are used under license. ©2020 KSIN Luxembourg II, S.à.r.l. All rights reserved.