

# Rae-Bon Sew & Quilt Shop

## SPOOLS OF NEWS

January 2021

for the sewist in the know

### ***CHOOSING A THREAD-MACHINE EMBROIDERY***

Our series on selecting thread continues with embroidery thread. Like with all thread choices, you want to pick a high quality thread so you don't have excessive lint build up and your thread will remain strong over time. When embroidering, your machine is stitching VERY fast, so you need a strong thread to prevent breaking. This is why we don't recommend cotton thread for embroidery.

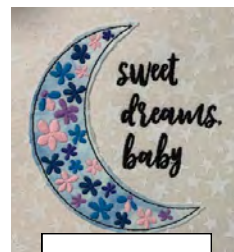
Embroidery thread is usually polyester or rayon because that provides the needed strength. Most embroidery threads are 40 weight. A thicker thread like this works well for embroidery so the stitching and the design stand out. The other option in embroidery thread is 60 weight. This thinner thread works well for fine details and tiny text. With embroidery thread as long as you are selecting high quality thread your choice of what brand really comes down to what finish do you want, what size spools do you want to buy, and how many color options do you need.

**Floriani Thread** (40 wt) is a 100% polyester thread with a sheen. It is a color fast thread so you won't have issues with losing color in the wash. It can even stand up to bleaching. Floriani thread comes in 360 colors plus an additional 30 variegated colors. Each spool is 1,100 yards.

**Madeira Polyneon Thread** (40 wt) is a 100% polyester thread with a sheen. Similar to Floriani thread it can stand up to a lot of washing. Madeira Polyneon thread comes in 170 colors plus 10 variegated colors. Each spool is 220 yards, so this thread is great for smaller projects or colors you won't use very often.

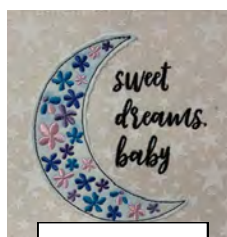
**Madeira Rayon Thread** (40 wt) is a 100% viscose rayon thread with excellent sheen and luster. Rayon is a bit softer thread compared to polyester. Madeira Rayon thread comes in 100 colors plus 40 variegated colors. Each spool is 220 yards, so this thread is great for smaller projects. Plus if you are looking for variegated threads this brand has your largest selection.

**Embellish Matte Thread** (40 wt) is a 100% polyester thread with a matte finish, so you don't get the shine that you would with traditional embroidery thread. This can really give you a new look to an old embroidery design. Embellish Matte Thread comes in 130 colors. Each spool is 1,100 yards.



**Embellish  
Matte**

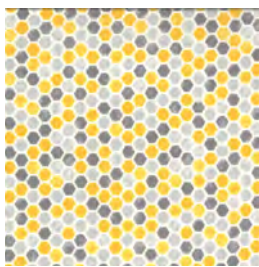
**Embellish Flawless Thread** (60 wt) is a 100% polyester thread with a sheen. Being a 60 weight thread, it is great for fine detail and tiny words. Ideally you will use a design that is digitized for 60 weight thread. The designs pictured are the same design but it has been digitized differently for the 40 or 60 weight thread. If your design is not specifically digitized for 60 weight thread, you will notice you do not get the same coverage as you would using a 40 weight thread. Embellish Flawless Thread comes in 120 colors. Each spool is 1,100 yards.



**Embellish  
Flawless**

**Store Hours:** Monday-Friday: 10 am-5:30 pm • Saturday: 10 am-4 pm • Sunday: Closed  
3060 25th St SW Fargo, ND • 701-433-7203 • [www.rae-bon.com](http://www.rae-bon.com) • [reddoor@rae-bon.com](mailto:reddoor@rae-bon.com)

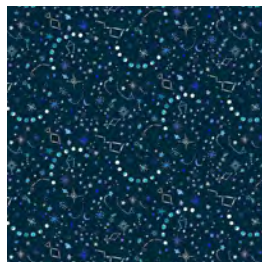
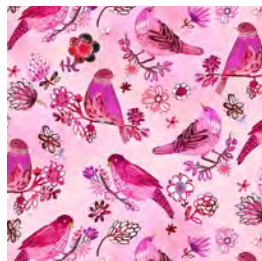




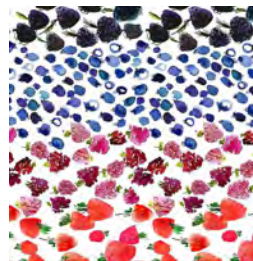
DEB STRAIN  
**BEE  
GRATEFUL**



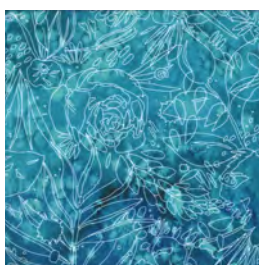
a sampling of  
**NEW FABRIC**  
THAT *just* ARRIVED



**TREE OF LIFE**



**MOODY  
BLOOM**







# Guide to Gadgets

*making your life easier  
one gadget at a time*

# Embroidery Gadgets



## Hoop Mat by DIME

The Hoop Mat provides a non skid hooping surface so you never have to chase after your hoop again! It is a silicone mat with a printed grid (22" x 16") that allows you to easily find the center point of any size or brand of hoop. The printed grid allows you to instantly measure by simply placing the hoop down on the mat. **\$19.99**

## Perfect Punch Tool by OESD

OESD's Perfect Punch tool makes creating holes in your project simple and effortless. Includes cutting tip punches in the following sizes: 1.5 mm, 2.5 mm, 3.0 mm, 3.5 mm and 4 mm. Lay your project on a self healing cutting mat. Press straight down with firm, even pressure to create a clean and precise hole. **\$19.99**



## Paper Tape by KimberBell

KimberBell Paper Tape is designed for use with in-the-hoop embroidery projects. Use it to temporarily secure fabrics while piecing or adding embroidery to your projects. It won't leave a sticky residue on the needle as it sews and is semi-transparent so you can see your project. Plus it tears away from stitches easily. **\$3.99**

## Embroiderer's Compass by DIME

Navigate through the confusing world of stabilizers with the Embroiderer's Compass. Just spin the dial until the pointer is on the fabric type that matches your project. The recommended stabilizer and needle types are displayed in corresponding windows. Now you can embroider everything from velvet, fur and fleece to silk, knits and quilting cotton with confidence. This handy tool two-sided tool is a convenient size to carry while shopping for embroidery supplies or even take with you to embroidery retreats. With 25 fabrics and techniques on the Embroiderer's Compass, you will never feel lost again! **\$24.95**



## Embroidery Placement Ruler by Creative Notions

Achieve perfect and consistent embroidery placement every time. Pre-marked with lines for industry standard adult sizes, simply select the type and size garment. Then line up the markings on the Embroidery Placement Ruler and you have found the center placement of your embroidery design! Perfect tool for quick and easy measurements on all types of garments up to men's 4x sizes. Eliminate the guesswork, consistently place your embroidery every time. **\$18.99** Also available in Junior size for Youth S-XL and Child 2-7



# Block of the Month Sneak Peek

We have some really fun block of the months coming up in 2021! We had hoped to have them all ready to show you with start dates and pricing, but unfortunately some of the fabric is a bit delayed. So today we're just going to offer you a sneak peak of things to come. Each of our block of the month's this year focus on different techniques, so it's a great time to learn something new or practice your skills. We'll have tutorial videos on Facebook for all of the different techniques if you need some help getting started (you don't need an account to watch the videos). Once it's safe to have groups back in the shop hopefully we'll be able to get together and do some sewing on the blocks as well.

With each quilt, we're sharing the pattern photo and the fabrics selected (the fabrics that are in stock), so at this point you've got to use a little imagination to envision the finished quilt. We'll let you know as soon as the finished quilts are ready for their debut.

## *Paper Piecing Block of the Month* **GRAPHIC JAM**

Graphic Jam features 12 modern plus shaped quilt blocks. Each month you will create an entirely unique paper pieced block. We're waiting for the background fabric to arrive, but at this point you can see the fabric for the plus signs. You will be able to select from two sizes: 70" x 82" (twin size) or 36" x 42" (wall hanging)





## Applique Block of the Month

### **EASTON LOOP WEST**

Jennifer has been in love with this pattern since she saw it at Quilt Market awhile back and is SEW excited to finally stitch it up. Each month she'll help you explore different hand applique techniques. If hand applique isn't your cup of tea, you could easily modify this to be fusible applique. We'll have a sample of



each technique to help you decide.

The pattern also calls for hand embroidery, but Jennifer is going to mix it up a bit and use the triple stitch on her machine. So you can decide how much (or little) hand work you'd like to do. The finished quilt is

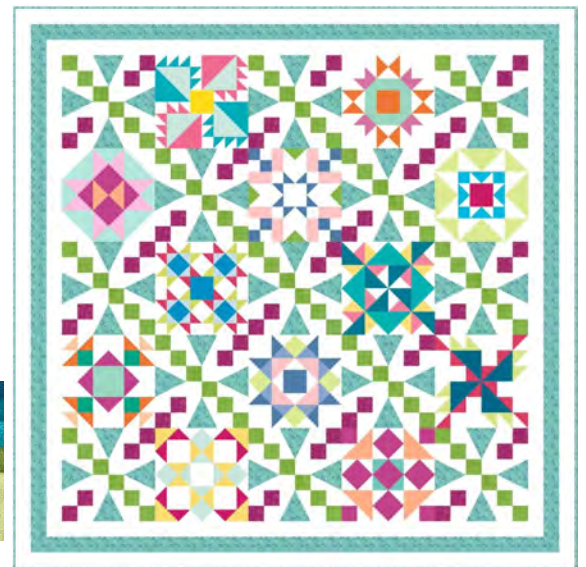
72" x 84". We've pictured 38 of the fabrics in this quilt, but there are still a few more pieces to arrive.



## Studio 180 Tools Block of the Month

### **GRANDMA'S BLESSING**

Studio 180 tools help you to easily trim up blocks to be the perfect size. This block of the month will use four different templates: Tucker Trimmer, Wing Clipper, Square Squared, and V Block. Over the course of twelve months, you'll see all the different block types that can be created with the four tools. The finished quilt is 72" x 72". We are still waiting for the background fabric to arrive, but you can see the colors that will be used for the blocks.



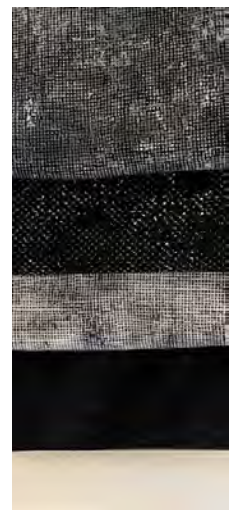
## Machine Embroidery Block of the Month

### **MANDALA QUILT**

This is a really stunning quilt shaped like an Octagon or Mandala with lots of appliqué and embroidery all done in the hoop. All the designs fit in a 5 x 7 embroidery hoop.

We'll be making a quilt with three rounds (33.5" x 33.5"). It'll make a great table topper. The pattern does include instructions to add additional rounds and thus make it larger.

All machine embroidery formats are available.





## *Tula Pink Block of the Month* **NEBULA**

# Available Now

Journey to the stars by being a part of the Nebula Block of the Month by Jaybird Quilts. This collaboration between Jaybird Quilts and FreeSpirit Fabrics features Tula Pink True Colors, Solids, and HomeMade fabrics. The program runs January 2021 through October 2021.

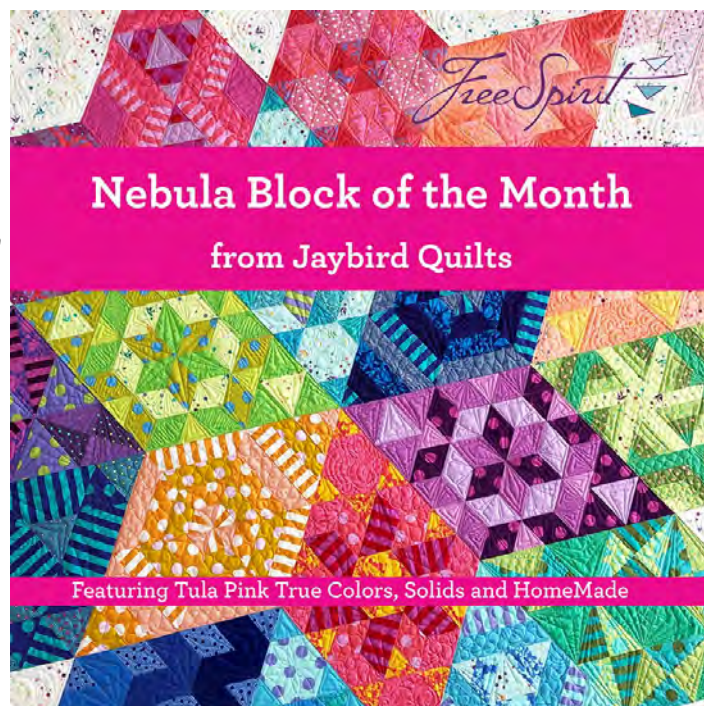
The Nebula Block of the Month design features nine unique blocks all created with the Hex N More and Super Sidekick rulers from Jaybird Quilts. There are no pesky Y seams!

Each month you'll create two blocks of the same design. Creative fabric placement will make your quilt appear to have 18 different blocks.

The block of the month includes 81 fabrics from Tula Pink True Colors, Tula Pink Solids and HomeMade fabrics needed for the 96" x 97" quilt top and binding. The Jaybird Quilts Booklet, Nebula, that is included in the program includes full-size templates.

The Nebula pattern includes complete directions for finishing a large lap, queen, and king size quilt. Each size is made with the same 18 blocks in the same size and layout. You can choose your finished size after the blocks have been made. The Block of the Month kit focuses on the Queen size. But, with a bit more fabric you can make a King (not included in the kit). Add to your stash or create a scrappy back with the leftover fabric when you make the large Lap size. The choice is yours.

There is a \$25 sign up fee. The monthly cost is \$30 and the 10th month is free!



# CREATIVITY

## STARTS HERE

GET DETAILS

**PFAFF**  
Perfection starts here.™

Exclusive PFAFF®  
Stitch Techniques



quilt expression™ 720

SEWING MACHINE



Exclusive Stitch  
Creator™ Feature

### BUNDLE & SAVE

Save today when you buy these  
accessories with the machine



PFAFF®  
Quilt Binder

821163096



PFAFF®  
Accessory Tote

821175096

Offer valid January 1-31, 2021.

PFAFF, PFAFF PERFECTION STARTS HERE, QUILT EXPRESSION and STITCH CREATOR are trademarks of KSIN Luxembourg II, S.a.r.l. ©2021 KSIN Luxembourg II, S.a.r.l. No prior purchases. Cannot be combined with any other offers or discounts. All rights reserved. All pricing decisions are at the sole discretion of the retailer. Prices are suggested and may vary by location.



# CREATIVITY

## STARTS HERE

### performance icon™

TOP-OF-THE-LINE SEWING  
MACHINE

**PFAFF**  
Perfection starts here.™

Multi-  
Touch  
Screen

Brightest Work  
Space

GET DETAILS



## BUNDLE & SAVE

Save today when you buy these  
accessories with the machine



Extension Table  
with Adjustable  
Guide

821136096



PFAFF®  
Quilt  
Binder

821163096



PFAFF®  
Accessory  
Tote

821175096

## MARKET LEADING FEATURES\*



Exclusive  
Stitch  
Techniques



Strongest  
Needle  
Piercing  
Power



Largest  
Working  
Area



Fully  
Automatic  
Needle  
Threader

Offer valid January 1-31, 2021.

PFAFF, PFAFF PERFECTION STARTS HERE and PERFORMANCE ICON are trademarks of KSIIN Luxembourg II, S.a.r.l. ©2021 KSIIN Luxembourg II, S.a.r.l. No prior purchases. Cannot be combined with any other offers or discounts. All rights reserved. All pricing decisions are at the sole discretion of the retailer. Prices are suggested and may vary by location. Note: Product selection will vary by location. \*Market Leading Features are when compared to other top-of-line sewing only machines including HUSQVARNA® VIKING® EPIC™ 95Q, Brother Dream Weaver VQ 3000, Janome Horizon Memory Craft 9400, Babylock Crescendo and Bernina 740.



# Altair Bundle

START. KEEP. SHARE.  
SEWING



SOFTWARE  
PALETTE 11



INSPIRATIONAL  
GUIDE



60 DAYS OF  
ONLINE CLASSES

## RAE-BON EMBROIDERY STARTER PACKAGE

Includes Stabilizer, Needles,  
Marking Pens, Scissors, and  
Stabilizer Workbook



baby lock

# Aerial Bundle

START. KEEP. SHARE.  
SEWING



SOFTWARE  
PALETTE 11



60 DAYS OF  
ONLINE CLASSES

## RAE-BON EMBROIDERY STARTER PACKAGE

Includes Stabilizer, Needles,  
Marking Pens, Scissors, and  
Stabilizer Workbook



baby lock