

Rae-Bon Sew & Quilt Shop

SPOOLS OF NEWS

October 2022

for the sewist in the know

NEW EVENT, NEW MACHINE

It's been quite some time since we've hosted any events at the shop. We are excited to be welcoming DMarie Stilwell to the shop on Tuesday, October 25. DMarie is a Pfaff Educator with over 30 years of sewing experience. She started sewing in Home Economics in middle school and has been hooked ever since! She loves the Pfaff Creative Icon 2 and can't wait to share all the fabulous features with you!

The project for this event is "Quilting-It's Great Therapy!" You will be sewing and embroidering to create this quilted table runner. You will be introduced to Pfaff Exclusive Stitches, Applique Creator, Shape Creator, quilting in the hoop, and how to use other Pfaff Creative Icon 2 exclusive features. All fabrics, machine, and lunch is provided. Already own a Pfaff Creative Icon 2? Bring your machine and join in the fun!

The Pfaff Creative Icon 2 has some awesome features not found on other machines. It is the first machine in the world to be engineered with artificial intelligence. It monitors your sewing and alerts you if the attached foot is not compatible with your selected stitch. The speech recognition features allows you to talk to your machine and it will respond to over 40 requests. Through the artificial intelligence your machine is continuously updated with the latest in sewing features and functionality.

The Pfaff Creative Icon 2 is wi-fi enabled allowing you to connect directly to my Sewnet right from your machine. Browse the Pfaff blog

from your machine screen for tips and hints, free projects, and free designs. Find and create a new project right from your machine! You can also monitor your stitch outs, design placement with ease, and digitize simple photos.

The creative embellishment attachment is the only thing like it on the market. The attachment automatically guides ribbon, beads, yarn, or cording with ease while embroidering. It rotates 360 degrees to ensure perfect material placement to create the ultimate in custom embellishments. The largest hoop on the market (360x350) is included giving you lots of embroidery space.

The Pfaff Creative Icon 2 features a camera and projector for perfect stitching and embroidery design placement. A large touchscreen, extra large bobbins, enhanced IDT, exclusive stitch techniques, tapering on all decorative stitches, four free motion modes. . . This machine has everything to make sewing and embroidery easy and more fun! Who doesn't want more fun in their life? Sign up for our event on October 25 to experience first hand all these great features of the Pfaff Creative Icon 2!



Store Hours: Monday-Friday: 10am-5:30 pm • Saturday: 10am-4pm • Sunday: Closed

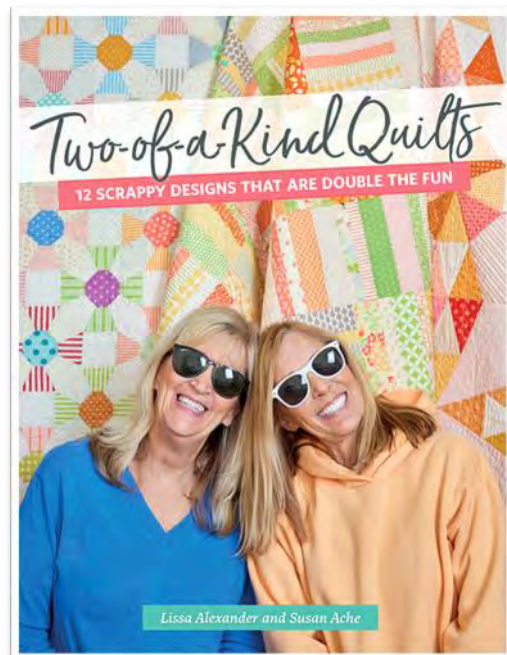
3060 25th St SW Fargo, ND • 701-433-7203 • www.rae-bon.com • reddoor@rae-bon.com

BOOK REVIEW

Jennifer's Thoughts on Our Newest Titles

Two-of-a-Kind Quilts

Lissa Alexander and Susan Ache have paired up to show you how they design scrap quilts. One of my favorite features of the book is when they show you the fabrics that made the cut for the quilt and more importantly the ones that didn't make the cut. They also discuss why they eliminated those fabrics giving you some great insight as to how to choose fabric from your scraps and still maintain a cohesive look to your finished quilt. When designing the quilts for the book, they selected six categories and each created a quilt with their take on the category. Categories include two of a kind, pick a mix, two halves of a whole, a tale of two seasons, scraps gone wild, and I'll have seconds. It was fascinating to see how they had the same category but designed in completely different ways. I also enjoyed the peeks into their creative process with the different anecdote that are shared about each quilt. They've also highlighted the longarm quilters that quilted each of the quilts in the book and how those quilters made decisions about the quilting. I find deciding how to quilt a quilt to be one of the most challenging parts of quilting, so I really enjoy reading how other quilters decide. I don't see this very often in books, so I really enjoyed this.



All-Time Favorites

Some of your favorite designers from Moda have come together for a new book! They've each selected their favorite basic quilt block and reimagined it in a new way. I think Robin Picken's modern take on the Plus Sign block is my favorite. I also really loved Lissa Alexander's bright take on the Friendship Block (the cover quilt). Really though all 14 designers reimagined their favorite block in a fun and interesting way.

Each designer also completed a full questionnaire of their favorites. I always think it's fun to learn a little more about the designers who create some of our favorite fabrics and patterns. I learned Brenda Riddle and I have the same favorite animals! Also many of the designers are as big of fans of the Bloc_Loc Ruler as we are at Rae-Bon Sew & Quilt Shop. They also shared their favorite quilting shortcut and I was surprised to see the number of designers who said machine sewing their binding. That's one shortcut I've never been happy with my results.

Overall this book has some beautiful quilts, great instructions, and is an interesting read!



A Pattern Jennifer is Excited About ...

Scrapbooking

Scrapbooking is a great pattern to use scraps or feature a bunch of prints you love. The pattern includes five different quilt sizes from baby to king. The instructions include lots of good pictures and suggestions for using scraps or just selecting your three favorite fabrics (and a background).

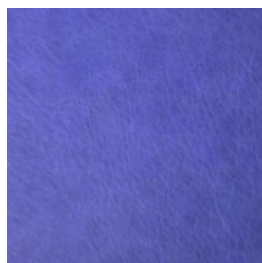


LET IT SNOW

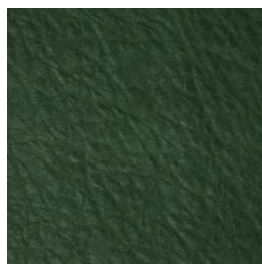
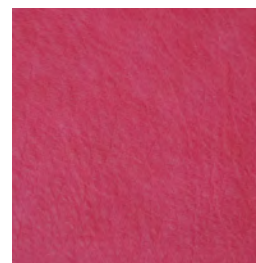
Flannel



a sampling of
NEW FABRIC
THAT *just* ARRIVED

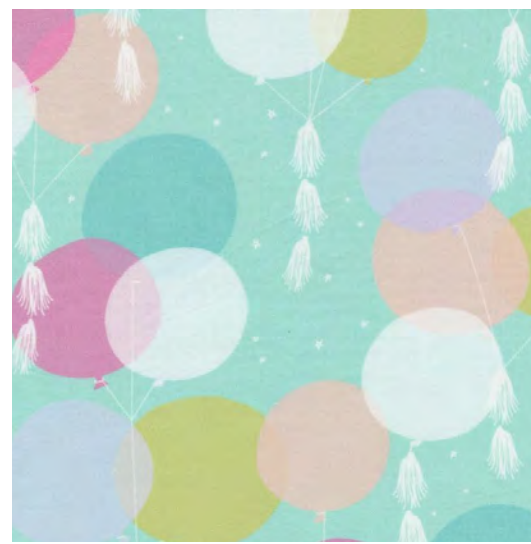


new
**CORK &
LEATHER**



SOIREE

Mara Penny



QUILT MARKET FINDS!

Preorder your box of our top
10 Quilt Market Finds!

Quilt Market is back on this year! Sandy and Jennifer will be traveling to Houston to see everything NEW in the world of quilting. They are going to pick their top 10 favorite items and put together a box of the latest and greatest just for you! This could include notions, patterns, tools, fabric, and more. Be one of the first to receive their top 10 new items!



Quilt Market Finds is \$99 per box. A limited number of boxes are available! **Orders must be in by Friday, October 28 unless we sell out sooner.**

We are aiming for boxes to be available for pickup (or shipping) at the end of November. As you know production and shipping is still a bit of a guessing game so we can make no guarantees. We'll do our best to have Quilt Market Finds ready at the end of November, but please be patient with us if we are not able to meet that date.



*Watch Us Live
on Facebook!*

Live at 11 AM

Machine Mondays
What's New Wednesdays
Fundamental Fridays

Challenge Time

Challenge ends
October 15

Design your own Stitchin Stella

There's SEW many ways to personalize Stitchin Stella! And for this challenge, we want to see what YOU come up with! The sky's the limit, but the pattern does include lots of tips for accessories you can add.

To enter purchase:

- Stitchin Stella Pattern \$10.50
- Wooden Spool \$10

Bring your completed Stitchin Stella to the shop by Saturday, October 15. Customers will vote on their favorite and the winner receives a \$50 gift card!



Top Prize: \$50
Gift Card
Plus Every
Participant
Wins a Prize

OCTOBER 2022

| Sun | Mon | Tue | Wed | Thu | Fri | Sat |
|--|--|---|--|---|---|---|
| | | | | | | 1 Hankinson Retreat |
| 2 Hankinson Retreat | 3 | 4 KimberBell Tier Tray Session 1 of 2 10:30 am - 4 pm | 5 KimberBell Tier Tray Session 2 of 2 10:30 am - 4 pm | 6 Beginning Quilting Session 1 1 - 4 pm or 6 - 9 pm | 7 Open Sew 10 am - 5 pm | 8 |
| 9 | 10 ScanNCut Session 2 of 5 1 - 5 pm | 11 Sew, What's New 1:00 pm | 12 Believe Quilt 11 am - 5 pm | 13 Beginning Quilting Session 2 1 - 4 pm or 6 - 9 pm | 14 Mystery Retreat 10 am - 10 pm | 15 Mystery Retreat 10 am - 10 pm Youth Sew Acorn Coaster 1 - 4 pm |
| 16 Mystery Retreat 10 am - 4 pm | 17 Paper Piecing Club 1 - 4 pm or 6 - 9 pm | 18 Sachi Bag 10:30 am - 5 pm | 19 Custom Quilting with the Pro-Stitcher 1 - 5 pm | 20 Beyond the Frame 11 am - 1 pm | 21 Open Sew 10 am - 5 pm | 22 KimberBell Tier Tray Session 1 of 2 10:30 am - 4 pm |
| 23 KimberBell Tier Tray Session 1 of 2 10:30 am - 4 pm | 24 Night Flight 11:15 am - 5 pm | 25 Quilting, It's My Therapy 11:15 am - 5 pm | 26 Diamond Gem Bag 10:30 am - 5 pm | 27 Beginning Quilting Session 3 1 - 4 pm or 6 - 9 pm | 28 Open Sew 10 am - 5 pm | 29 Open Sew 10 am - 4 pm |

CLASS POLICIES

Call, visit our website, or stop in to sign up and pay for the class of your choice. Class fee is due when you register.

The class supply list will be available when you register and pay for the class. Supplies are not included in the class fee unless otherwise specified. Please have supplies purchased before class. Kits required are available at the store. No photocopied or sharing of patterns or books will be allowed in classes.

Please be setup and ready to begin class at the specified time.

We consider your enrollment to be a commitment to take the class and we in turn make a commitment to the instructor. No cancellations are allowed on classes. Thank you for not asking us to make exceptions.

Your sewing machine or serger must be in top working condition before you arrive at class. Students whose equipment is not working properly disturb and slow down the class. We service all brands of machines and sergers so come see us prior to the start of the class.

CLASSES

BELIEVE QUILT

Wednesday, October 12
11:00 am - 5:00 pm

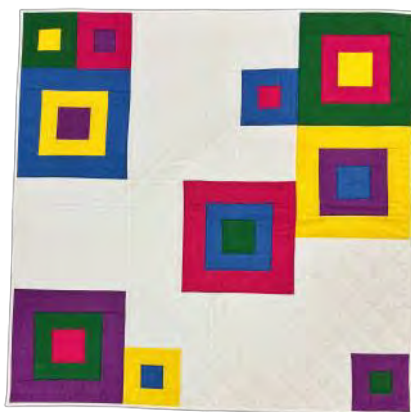
Fusible applique is one of the quickest ways to make a large scale design. Plus it lets you go outside the bounds of straight lines. Join Jennifer to learn her tips and tricks for fusible applique while assembling this large snowman. Bring your own sewing machine. The class fee is \$20 plus supplies. The class fee is waived with purchase of a Believe Quilt Kit.



BEGINNING QUILTING

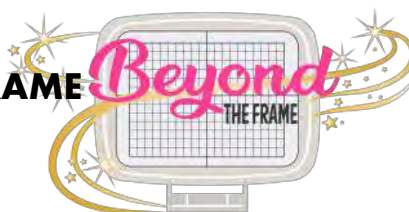
Thursday, October 6, 13, 27, & November 3
1:00 - 4:00 pm or 6:00 - 9:00 pm

Do you want to learn to quilt or improve your skills? This is the class for you; no experience needed. At the end of the 4 sessions, you will have learned the basic skills of quilt making: fabric selection, rotary cutting, accurate piecing, quilting, and binding. In the first class, we'll be discussing tools and selecting fabrics. A 20% discount will be given on supplies purchased during the first class. We want to make sure your quilt is completed at the end of the four sessions, so there will be homework each week. Bring your own sewing machine. Class fee is \$75 plus supplies and book.



BEYOND THE FRAME

Thursday, October 20
11:00 am



Looking for embroidery machine inspiration? Well look no further! Join Zandra Shaw for her new webinar series, Beyond the Frame! This series will teach and inspire you while you learn how to get the most out of your embroidery machine. There's something for everyone regardless of the size of your embroidery field. Join us each month to watch the webinar, enjoy some snacks, and visit with fellow embroiders. Bring a USB stick and receive the design files for that month's project. Everyone who attends will have a chance to win a design pack from Zandra! Best of all there is no charge for this club. We do ask that you sign up ahead of time to ensure we have room for everyone.



New Owners Class

Explore the features and stitches of your new sewing machine. You will stitch samples, learn the functions of your machine, and basic cleaning. Open to Baby Lock, Brother, Pfaff, and Viking owners. No charge for machines purchased at Rae-Bon; \$75.00 for others. New Owners Classes are by appointment. Please call the shop at 433-7203 to arrange a time. Bring your machine, accessory feet, foot control, power cord, spool of thread, and bobbin.

A new owners class is also available to learn the basics of machine embroidery. No charge for machines purchased at Rae-Bon; \$150 for others.



CUSTOM QUILTING WITH PRO-STITCHER

Wednesday, October 19
1:00 pm - 5:00 pm

Let's explore all Pro-Stitcher has to offer! This class is open to those with Pro-Stitcher or those who just want to explore what Pro-Stitcher is all about. You will learn Pro-Stitcher's features in a tangible way while making a beautiful table topper (or pillow). This is a perfect class to jumpstart or refresh your knowledge on custom quilting! In class, we'll be using the Pro-Stitcher Simulator, so you will need to bring a laptop to class. I also recommend a mouse for easier navigation. We will not actually be quilting in class, but you will go home with a file ready to stitch out on your Pro-Stitcher at home. The class fee is \$20.



DIAMOND GEM BAG

Wednesday, October 26
10:30 am - 5:00 pm

The Gem Bag pattern uses the Dancing Diamonds Art quilt and turns it into a stunning, sophisticated tote bag. Becoming an art quilter is within reach for anyone with PlumEasy's technique! We won't finish the whole bag in class, but you should be ready for quilting by the time you go home! Bring your own sewing machine. The class fee is \$20 plus supplies. The class fee is waived with purchase of a Christmas Diamond Gem Bag Kit.



NIGHT FLIGHT

Monday, October 24 11:15 am - 5:00 pm

Night Flight features improvisationally pieced Flying Geese units soaring across a near solid background. Jennifer designed this quilt exclusively for Quilt Sampler Magazine and she has some great tips to share with you to make Flying Geese your new favorite block. No need to worry about lost points or wonky geese with her tips. Bring your own sewing machine and precut fabric. Class fee is \$20 plus supplies and Quilt Sampler Magazine.



SACHI BAG

Tuesday, October 18
10:30 am - 5:00 pm

The Sachi bag is a spacious tote that can carry everything you need and more! This beautiful carry-all tote features cork or leather on the exterior accents. While constructing this bag, you'll learn how to assemble bag features like a slip pocket with magnetic snap closure, recessed zipper closure, an interior zipper pocket, and a boxed bottom. Bring your sewing machine. The class fee is \$20 plus supplies.



CONTINUING CLASS SERIES

Learn to Use Your ScanNCut

Monday, October 10 from 1-5 pm

Paper Piecing Club

Monday, October 17 from 1-4 pm or 6-9 pm

SEW, WHAT'S NEW?

Tuesday, October 11 at 1:00 pm

New items are always arriving at Rae-Bon Sew & Quilt Shop! Stop by each month for a fun filled social hour and show of everything new (fabric, notions, machines, etc.). Receive a 10% discount on any new items highlighted that day. Plus bring whatever you've been working - everyone loves a good show and tell.



YOUTH SEWING: ACORN COASTER (AGES 8-15)

Saturday, October 15
1:00-4:00 pm

No sewing experience needed! Learn to sew while creating a cute project. This month you'll sew an acorn coaster while learning piecing, quilting, and applique. Class is limited to the first 6 students. The class fee of \$30 includes all project supplies and use of a sewing machine.



OPEN SEW

Bring whatever project you'd like to work on and join your friends (or make new ones). We'll provide irons and the space to work. You bring your project and any supplies you need.

Open Sew is free, but sign up is required to reserve your spot as space is limited.

Friday, October 7: 10 am - 5 pm
Friday, October 21: 10 am - 5 pm
Friday, October 28: 10 am - 5 pm
Saturday, October 29: 10 am - 4 pm



Does your Machine Need a Tune Up?

Steve, our service technician, is factory trained by Baby Lock, Brother, Pfaff, and Viking and can service all makes and models of machines. Steve's turn around time is currently less than a week. Although this may vary depending on the number of machines in for service.

Why do I need to have my sewing machine serviced?

There are many moving parts in a sewing machine and if it moves, it needs lubrication. These days many of the moving parts are housed with computer circuit boards and wires around them and are inaccessible to the home sewer. A factory trained technician needs to open up the machine to lubricate parts that you are unable to access as well as clean areas you are unable to reach. For best performance and years of sewing, we suggest you have your machine serviced annually.



BRING YOUR OWN PROJECT

Hankinson Retreat

September 29–October 2, 2022

Come join us for some fun and laughter and get some unfinished projects done! All meals will be provided. Each quilter will get a 6ft table, great lighting, and free Wi-Fi. Housing and linens are included in the cost.

Cost: \$270.00 per person for double/triple room
(Please give roommate requests when registering)
\$300.00 per person for single occupancy

Payment must be made in full to reserve your spot. No refunds are available after registration.

St. Francis Retreat Center
Hankinson, ND



Rae-Bon
Sew & Quilt Shop



701-433-7203



www.rae-bon.com

CREATE HOLIDAY WONDER WITH

KIMBERBELL® NORTH POLE TIER TRAY TWO-DAY MACHINE EMBROIDERY EVENT



Tuesday & Wednesday, Oct. 4 & 5
or
Saturday & Sunday, Oct. 22 & 23

◆ 10:30 am - 4:00 pm ◆
Each Day

\$199

Includes Event Kit (including the tier tray),
Embroidery Designs, Stabilizers, & Snacks

At Kimberbell's two-day machine embroidery event, you'll receive the Attendee Project Kit to make a beautiful Christmas display with 12 dimensional projects:

- ◆ SANTA & MRS. CLAUS STUFFIES
- ◆ MILK & COOKIES MINI PILLOW
- ◆ NAUGHTY OR NICE LIST
- ◆ RUDOLPH PORTRAIT
- ◆ SANTA'S WORKSHOP HOOP
- ◆ SNOWFLAKE FAIRY LIGHTS
- ◆ SMALL & LARGE HOLIDAY PARCELS
- ◆ 3D TREES (3 SIZES)



STITCH 12 DESIGNS IN 4x4, 5x7, AND 6x10 HOOPS!



It's a Mystery! Quilt Retreat

FRIDAY-SUNDAY, OCTOBER 14-16

10 am - 10 pm (Retreat ends at 4 pm on Sunday)

What are we making?

Join us for a fun filled weekend of Mystery and Intrigue. We will be featuring a secret quilt project (good for all skill levels). The finished quilt will be 54" x 63" (it would be easy to add borders if you wanted a larger quilt). The quilt uses three fabrics (light, medium, and dark) plus a border. The rest is a mystery! Depending on your pace, you may be able to finish your quilt top at the retreat.

What do I bring?

At signup, you'll receive fabric requirements and cutting instructions for the mystery quilt. We encourage you to precut your fabric before you arrive to get right to the sewing. But this is a work at your own pace retreat so no pressure if you run out of time to precut. You will also need to bring your sewing machine and your favorite sewing supplies. The mystery quilt is traditional piecing and no special tools are required. You may want to bring along an additional project to work on in case you want a little break from the mystery quilt.

What is the cost?

The cost of the event is \$100 for the weekend. This includes your pattern (in segments of course) and a 6 ft sewing table. We'll also have snacks and prizes throughout the weekend. If you struggle with selecting fabrics, we have three different kit options that you can purchase in advance to make the weekend even easier for you! Each fabric bundle includes fabric for the top and binding (\$81.95). Bundle options are pictured to the right or stop in the shop to see them in person.

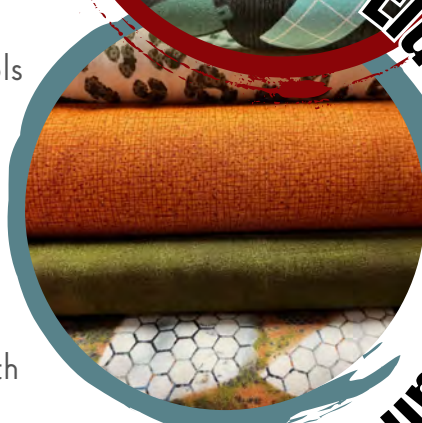
Cozy Mittens



Smore Fun



Elusive Man Quilt



A Pfaff Creative Icon 2 sewing machine with a digital display and various stitch selection buttons. The machine is white and blue, with a blue thread spool on top. The text "creative icon 2" is visible on the front panel.

QUILTING. IT'S GREAT THERAPY

Pfaff Creative Icon 2

Tuesday, October 25

11:00 am – 5:00 pm



Create a quilted table runner using a creative way to sew curves and Pfaff exclusive stitches. Whether you are a quilter or garment sewer you will learn more about sewing and embroidery as you create this fun project using the Pfaff Creative Icon 2. Learn more about Applique Creator, Shape Creator, quilt in the hoop, and how to use new features that you only dreamed were possible.





SEWING RETREAT

November 11-13, 2022 | 10 AM to 10 PM*

Country Inn & Suites

*Retreat ends at 4 pm on Sunday.

*Enjoy dedicated time to work on your
Christmas Gifts while Sewing with Friends!*

Bring your own projects to work on.
Each person will get their own 6 foot
table. You can setup your machine on
Friday and leave it setup all weekend.

The cost is \$75 for the weekend.
Coffee and water will be provided.



Rae-Bon
Sew & Quilt Shop

NEW MACHINES IN THE SHOP

Brother Innov-is BQ950

The Innov-is BQ950 affordable sewing and quilting machine is ideal for quilters of any level. Small enough to take on the go, yet advanced enough to create quilts you've always dreamed of. The large workspace and included wide table make working on small to mid-size quilts easier than ever before. You'll love the flexibility this machine gives you with 240 built-in sewing stitches and the Brother-exclusive My Custom Stitch feature so you can create your own personalized stitches. Experience a smoother sewing experience with longer feed dogs and J foot for powerful feeding and stitch consistency.

- Advanced needle threading system and automatic thread tension
- 8.3" from needle to arm
- 240 built-in sewing stitches included 10 styles of buttonholes and 5 sewing lettering fonts
- Sideways sewing
- Lockstitch key



Pfaff Creative Ambition 640 (160th Anniversary Limited Edition)

For 160 years, PFAFF® has developed premium sewing machines distinguished by their sophisticated appearance, superior performance and ultimate design freedom. The new, limited-edition PFAFF creative™ ambition™ 640 sewing and embroidery machine is a love letter to this legacy. A delight to both sewists and embroidery lovers alike, this elegant machine boasts ease-of-use features and comes with introductory PC/MAC embroidery software and an exclusive accessory kit in celebration of the 160th anniversary.

- Sem-Automatic Needle Threader and Automatic Thread Tension
- Integrated Dual Feed technology from Pfaff precisely feeds all types of fabric from the top and bottom
- 150 built-in stitches
- 101 embroidery designs
- 240x150mm Embroidery Area
- 8 Included Presser Feet plus Exclusive Accessory Kit with Five Additional Feet



LOOKING FOR A NEW MACHINE?

Stop in the shop and we'll find the Perfect Machine
for your sewing style and budget.