

Rae-Bon Sew & Quilt Shop

SPOOLS OF NEWS

November 2022

for the sewist in the know

ARE YOU READY TO TUCKERIZE?

No this isn't the latest fitness crazy. It's something even better! It's the secret to more accurate and easier quilt piecing. So what does it mean to Tuckerize . . .

Tuckerize verb 1. To convert traditional construction methods to Studio 180 tools and techniques 2. To use Studio 180 design tools with a pattern using traditional techniques

Studio 180 tools allow you to piece your blocks oversized and trim them to size so everything in your quilt matches up perfectly. The Studio 180 suite of tool includes tools for various blocks. Each tool has different lines to allow you to easily see how to trim for different block types.

The awesome thing is you can easily convert any pattern to be used with the Studio 180 Tools by being a little bit of a block detective. Look over your pattern and see what blocks make it up. Many like a half square triangle you'll recognize right off the bat. But have you ever heard of a Shaded Four Patch or a V Block? Studio 180 has a Unit

Guide where you can see all the different block types that you can cut with the Studio 180 tools. [Download here](#) or stop in the shop to see the guide.

Take the Birmingham runner from Tabletastic 3 (pictured to the left), it contains half square

triangles, flying geese, and Corner Pops. Can you spot each of the blocks?

Let's try another one.

Northampton, also from Tabletastic 3 includes Flying Geese and hourglass blocks. Can you spot those?

Turn to page 4 for the block breakdown of both runners.

In addition to being more accurate, the Studio 180 tools also include information on piecing multiples of a block at the same time.

Need multiple flying geese? Sew them four at a time. Same with a Shaded Four Patch use strip piecing and make multiple at a time!

While you do have a tiny bit of fabric waste that is thrown away when trimming the blocks, it's more than made up by the fabric you save. When doing a folded corner or square in a square block you usually have to throw away a hole triangle of fabric. Not with the Studio 180 tools, you'll learn to cut triangles to piece in place instead.



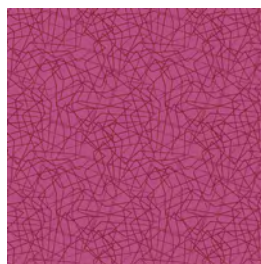
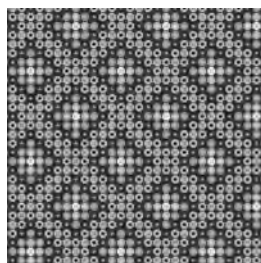
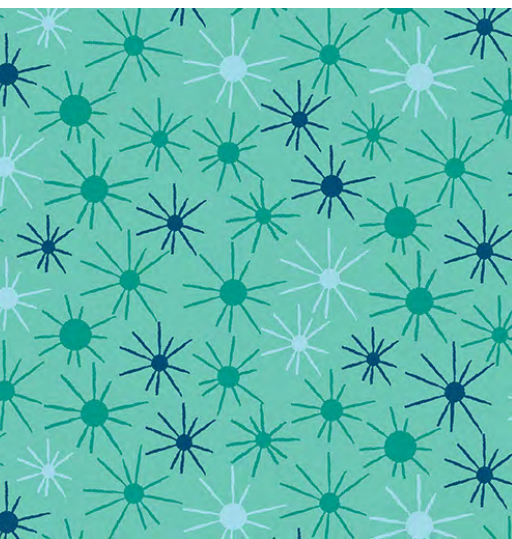
Store Hours: Monday-Friday: 10am-5:30 pm • Saturday: 10am-4pm • Sunday: Closed
Closed Thursday, November 24 for Thanksgiving

3060 25th St SW Fargo, ND • 701-433-7203 • www.rae-bon.com • reddoor@rae-bon.com



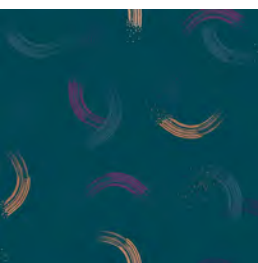
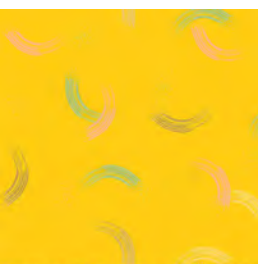
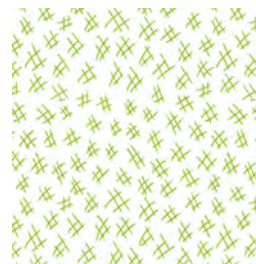
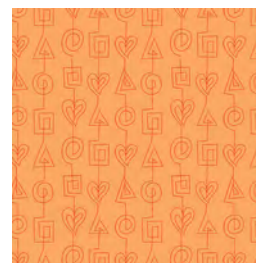
COFFEE PRINTS

a sampling of
NEW FABRIC
THAT *just* ARRIVED



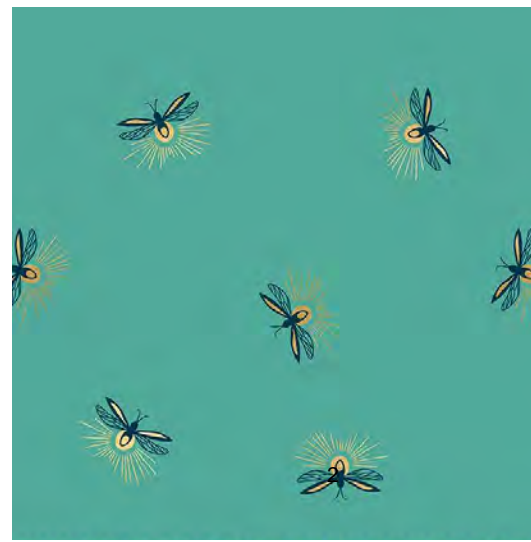
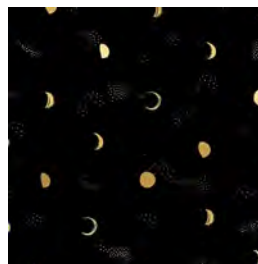
STITCHY

Christa
Watson



FIREFLY & TWIRL

Ruby Star
Society



DESIGNER REVIEW

Meet our Newest Pattern Designer

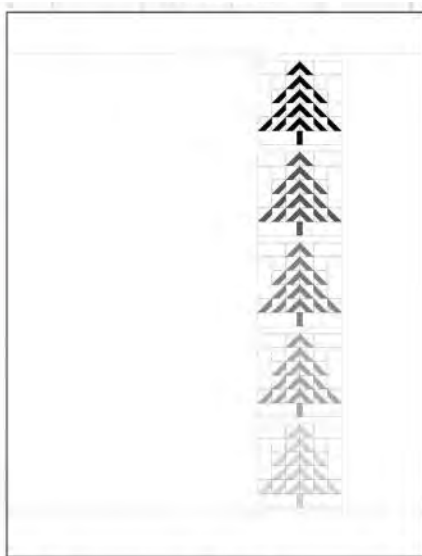
My Sew Quilty Life

We are so excited to start carrying patterns by Heather Briggs of My Sew Quilty Life. Her patterns use traditional piecing techniques with a modern twist. She loves designing floral quilts as well as holiday quilts.

I love her story of how she fell into quilting. Best to hear it straight from her:

“I stumbled upon quilting in Fall 2017 when I was a newborn photographer. I kept seeing other photographers using old quilt pieces in their newborn photos and I, being the maker I am, decided I would make a quilt to use in my photos. My thought was to make the quilt, drag it through the mud, scuff it up a bit, and make it look as antiqued as possible. I had no clue how long or how much effort went into making a quilt. I decided I would make the Grandmother’s Flower Garden quilt and then “distress” it. (I am very ambitious if you haven’t picked up on that already.) After spending what felt like over 100,000 hours making all the 1.5” hexes and then hand sewing them together I felt silly for considering trying to distress all my hard work. It was at that moment that I learned to respect quilting and ultimately fell in love with the craft. It took nearly three years to finally finish my Grandmothers Flower Garden quilt, and I am so happy I have that treasure to pass down. “ ~Heather Briggs

I think we can all relate to discovering that quilting was a little more work than we first envisioned. Heather recently celebrated her second anniversary with My Sew Quilty Life and released an adorable spool pattern (even better it’s free). You can visit her blog to [download](#) it. I just started stitching up the Prissy Patch and I really appreciate Heather’s pattern writing style. She caters both to those who like to read written direction and those of us who would rather just look at the pictures. All of her patterns include full color illustrations so it’s easy to see what pieces she’s talking about. She even color codes the cutting direction so you know exactly which piece is which.





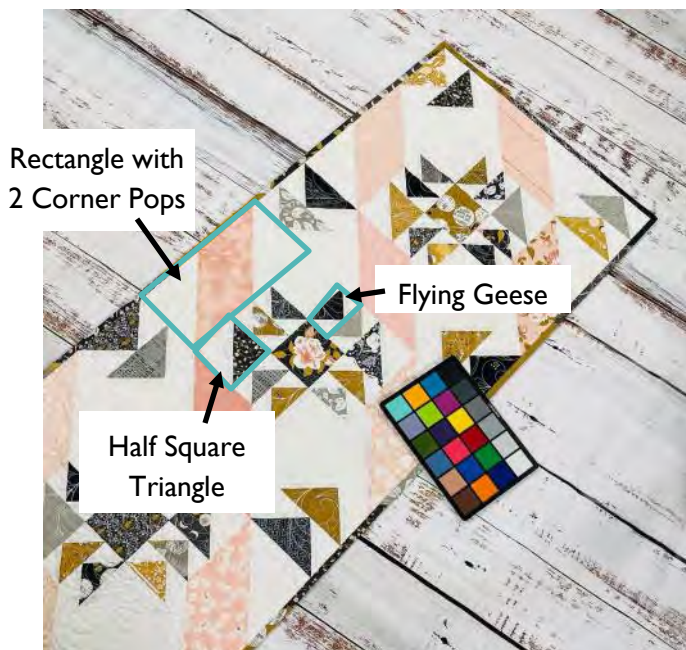
A Coupon for Every Month of 2023!

Stop in the shop December 8-10 and pickup a card with a coupon for every month of 2023. The coupon card is free with purchase. You'll save on notions, fabric, batting, and more in 2023!

Plus there will be deals throughout the shop all three days!

Cards are free with purchase December 8-10, 2022. One coupon card per household.

The block reveal from the front page ...



NOVEMBER 2022

Sun	Mon	Tue	Wed	Thu	Fri	Sat
		1 Applique Assistance 11 am - 5 pm	2 Open Sew 10 am - 5 pm	3 Beginning Quilting Session 4 of 4 1 - 4 pm or 6 - 9 pm	4	5
6	7	8 Sew, What's New 1:00 pm	9 Father Stitchmas 11:15 am - 5 pm	10 Beginning Quilting Session 1 of 4 2 - 5 pm or 6 - 9 pm	11 Sewing Retreat 10 am - 10 pm	12 Sewing Retreat 10 am - 10 pm
13 Sewing Retreat 10 am - 4 pm	14 ScanNCut Session 3 of 5 1 - 5 pm	15 KimberBell Cuddle Blanket 11 am - 5 pm	16 Open Sew 10 am - 5 pm	17 Beginning Quilting Session 2 of 4 2 - 5 pm or 6 - 9 pm	18 Binding on the Serger 1 - 4 pm	19 Youth Sew Trio of Christmas Ornaments 1 - 4 pm
20	21 Paper Piecing Club 1 - 4 pm or 6 - 9 pm	22 Grandma's Blessing 1 - 4 pm	23 Open Sew 10 am - 5 pm	24 Happy Thanksgiving	25	26
27	28 Open Sew 10 am - 5 pm	29 Embroidering on Wood Veneer 1 - 5 pm	30			

CLASSES

APPLIQUE ASSISTANCE

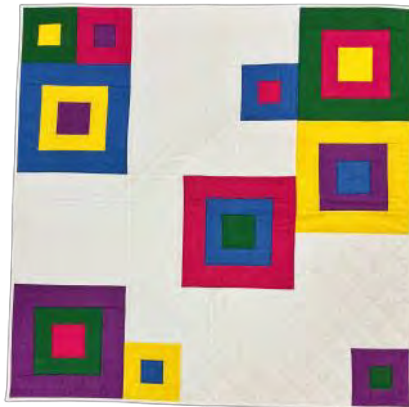
Wednesday, November 1
11:00 am - 5:00 pm

Do you have an applique project in the works but got a little stuck? Or maybe you've always wanted to try applique but don't know where to begin. Jennifer will be available all day to help you get going on your project. She has experience in both fusible and hand applique. Bring your project (in whatever stage it's at), whatever supplies you need, and your sewing machine (if needed). The class fee is \$20.

BEGINNING QUILTING

Thursday, November 10 & 17 and December 1 & 8
2:00 - 5:00 pm or 6:00 - 9:00 pm

Do you want to learn to quilt or improve your skills? This is the class for you; no experience needed. At the end of the 4 sessions, you will have learned the basic skills of quilt making: fabric selection, rotary cutting, accurate piecing, quilting, and binding. In the first class, we'll be discussing tools and selecting fabrics. A 20% discount will be given on supplies purchased during the first class. We want to make sure your quilt is completed at the end of the four sessions, so there will be homework each week. Students need to bring their own sewing machine to class. Class fee is \$75 plus supplies and book.



BEYOND THE FRAME

Thursday, November 17 starting at 11:00 am

Looking for embroidery machine inspiration? Well look no further! Join Zandra Shaw for her new webinar series, Beyond the Frame! This series will teach and inspire you while you learn how to get the most out of your embroidery machine. There's something for everyone regardless of the size of your embroidery field. Join us each month to watch the webinar, enjoy some snacks, and visit with fellow embroiders. Bring a USB stick and receive the design files for that month's project. Everyone who attends will have a chance to win a design pack from Zandra! Best of all there is no charge for this club. We do ask that you sign up ahead of time to ensure we have room for everyone.

QUILTING ON THE SERGER

Friday, November 18
1:00 pm - 4:00 pm

Many parts of a quilt can be created using a serger instead of your sewing machine. You'll learn to piece fabric using the flat lock and ladder stitch and attach binding all using your serger. Attaching binding with your serger is our favorite method for attaching binding because all your stray threads are cleaned up and you have a nice tidy edge to hand sew against. The class fee is \$20 plus supplies. Bring your 4 or 8 thread serger.



EMBROIDERY ON WOOD

Tuesday, November 29
1 pm - 5:00 pm

Did you know you can machine embroider on wood? In this class you'll learn how to add background stitches around central embroidery design. Then you'll stitch your design on wood veneer and attach it to a box. The class fee is \$25 and includes wood veneer. This class is only open to those with IQ Designer or Design Center on their embroidery machine. Students need to bring their own embroidery machine.



FATHER STITCHMAS

Wednesday, November 9
11:15 am - 5 pm

Father Stitchmas will make an adorable addition to your Christmas Décor. There are so many fun accessories you can add to personalize your Father Stitchmas. In class, we'll assemble the main body. The pattern includes instructions for a pieced coat or a solid fabric coat. If you would like a pieced coat, please complete the piecing ahead of time according to the pattern instructions. We will concentrate on construction of Santa in class and may not get to accessorizing. Class fee is \$20. Students will need to bring their own sewing machine.



GRANDMA'S BLESSING

Tuesday, November 22
1-4 pm

Grandma's Blessings, block of the month is a great technique builder. Each month Sandy will show you how to create these classic blocks with a modern twist. You'll be piecing the blocks slightly oversized and using the Studio 180 tools to trim the blocks to the precise size. Bring your sewing machine and create your monthly blocks in class. The class is only open to those participating in the Grandma's Blessings Block of the Month.

For November's block we'll be using the Magic Wand, Tucker Trimmer, and Square Squared Tools.



KIMBERBELL CUDDLE BLANKET

Tuesday, November 15
11 am - 5 pm

Cuddle blankets are so cuddly and easy to make! The KimberBell Cuddle Buddies Kits include a blanket with an applique buddy and a stuffed animal. The applique buddy can be sew on or machine embroidered - it's up to you! In this class, learn to work with cuddle while stitching up a blanket. Class fee is \$20 plus supplies. Students need to bring their own sewing or embroidery machine.



SEW, WHAT'S NEW?

Tuesday, November 8 at 1:00 pm

New items are always arriving at Rae-Bon Sew & Quilt Shop! Stop by each month for a fun filled social hour and show of everything new (fabric, notions, machines, etc.). Receive a 10% discount on any new items highlighted that day. Plus bring whatever you've been working - everyone loves a good show and tell.



YOUTH SEWING: TRIO OF CHRISTMAS ORNAMENTS (AGES 8-15)

Saturday, November 19
1:00-4:00 pm

No sewing experience needed! Learn to sew while making a trio of Christmas Ornaments. You'll do some sewing on the sewing machine, some hand sewing, and learn a bit of fabric folding. Class is limited to the first 6 students. The class fee of \$30 includes all project supplies and use of a sewing machine.



CONTINUING CLASS SERIES

Learn to Use Your ScanNCut

Monday, November 14 from 1-5 pm

Paper Piecing Club

Monday, November 21 from 1-4 pm or 6-9 pm



New Owners Class

Explore the features and stitches of your new sewing machine. You will stitch samples, learn the functions of your machine, and basic cleaning. Open to Baby Lock, Brother, Pfaff, and Viking owners. No charge for machines purchased at Rae-Bon; \$75.00 for others.

New Owners Classes are by appointment. Please call the shop at 433-7203 to arrange a time. Bring your machine, accessory feet, foot control, power cord, spool of thread, and bobbin.

A new owners class is also available to learn the basics of machine embroidery. In class you'll learn the functions of your embroidery machine, stabilizer recommendations, hooping tips, and more. No charge for machines purchased at Rae-Bon; \$150 for others.

OPEN SEW

Bring whatever project you'd like to work on and join your friends (or make new ones). We'll provide irons and the space to work. You bring your project and any supplies you need.

Open Sew is free, but sign up is required to reserve your spot as space is limited.

Wednesday, November 2: 10 am - 5 pm

Wednesday, November 16: 10 am - 5 pm

Wednesday, November 23: 10 am - 5 pm

Monday, November 28: 10 am - 5 pm



CLASS POLICIES

Call, visit our website, or stop in to sign up and pay for the class of your choice. Class fee is due when you register.

The class supply list will be available when you register and pay for the class. Supplies are not included in the class fee unless otherwise specified. Please have supplies purchased before class. Kits required are available at the store. No photocopied or sharing of patterns or books will be allowed in classes.

Please be setup and ready to begin class at the specified time.

We consider your enrollment to be a commitment to take the class and we in turn make a commitment to the instructor. No cancellations are allowed on classes. Thank you for not asking us to make exceptions.

Your sewing machine or serger must be in top working condition before you arrive at class. Students whose equipment is not working properly disturb and slow down the class. We service all brands of machines and sergers so come see us prior to the start of the class.



SEWING RETREAT

November 11-13, 2022 | 10 AM to 10 PM*

Country Inn & Suites

*Retreat ends at 4 pm on Sunday.

*Enjoy dedicated time to work on your
Christmas Gifts while Sewing with Friends!*

Bring your own projects to work on.
Each person will get their own 6 foot
table. You can setup your machine on
Friday and leave it setup all weekend.

The cost is \$75 for the weekend.
Coffee and water will be provided.





Demo December

Receive a FREE Stay Cozy embroidery design from Kimberbell when you stop in the shop for three demos during the months of November and December. Simply pick a date from each of the sessions and you'll receive a design emailed to you after demo 3 (or bring a USB to the final session).

Love our fabric selection? Purchase a kit for \$9.95. The kit includes fabric, glitter vinyl, ribbon, and cuddle needed.



Teal Twinkle



Red Sparkle

Demo 1

Saturday, Nov. 26 at 1 pm
Tuesday, Nov. 29 at 1 pm
Thursday, Dec. 1 at 10 am

Demo 2

Saturday, Dec. 3 at 1 pm
Tuesday, Dec. 6 at 1 pm
Thursday, Dec. 8 at 10 am

Demo 2

Saturday, Dec. 10 at 1 pm
Tuesday, Dec. 13 at 1 pm
(during Sew, What's New)
Thursday, Dec. 15 at 10 am





PLEASE JOIN US FOR OUR

Favorite Things Holiday Party

MONDAY, DECEMBER 5

6:30 PM

*Celebrate the season by
sharing the things you love!*

Think of your favorite thing for \$15.
Wrap it up and bring it to the party so you
can share your favorite with someone else!
Please spend no less than \$15. It is not fair to
others. You can always add a few extra
favorites so your gift is equal to \$15.

We'll have holiday appetizers and drinks to
enjoy while you discover a new favorite thing!



Join our Team!

Join our fun team and share your love of sewing and/or quilting with others! We are looking for someone who is interested in working 2-3 days per week (including some Saturdays).

The ideal employee:

- Enjoys working with customers
- Is detail oriented
- Has sewing and/or quilting experience

To apply stop in and pick up an application or download an application on our website.

*Watch Us Live
on Facebook!*

Live at 11 AM

Machine Mondays
What's New Wednesdays
Fundamental Fridays

Financing to fall for



0%
APR
FOR

**60
MONTHS***

On qualifying Brother sewing and embroidery machine purchase of \$5,000 or more with your Sewing & More credit card between November 3-21, 2022. 60 equal monthly payments required.

**or 72
MONTHS***

On qualifying Brother sewing and embroidery machine purchase of \$10,000 or more with your Sewing & More credit card between November 3-21, 2022. 72 equal monthly payments required.

November 3-21, 2022

*Offer applies only to single-receipt qualifying purchases made at participating Authorized Brother Dealer locations between November 3-21, 2022. \$5,000 minimum purchase required for 60-month financing. \$10,000 minimum purchase required for 72-month financing. Refurbished or used machines do not qualify. Software and accessories are not included in the financing offer and must be purchased separately. Purchase must be made using a Sewing & More Credit Card. Subject to credit approval. No interest will be charged, and equal monthly payments are required on promo purchase until it is paid in full. The payments equal the initial total promo purchase amount divided by the number of months in the promo period, rounded up to the next whole dollar. These payments may be higher than the payments that would be required if this purchase was a non-promo purchase. Regular account terms apply to non-promo purchases. For new accounts: Purchase APR is 29.99%. Minimum interest charge is \$2. Existing cardholders should see their credit card agreement for their applicable terms. Prices set by dealer may vary. Offers are subject to change at any time without notice. ©2022 Brother International Corporation. ©Disney.

brother
at your side

LUMINAIRE 3

Innov-is XP3



VALUE OVER
\$5,000

GET THE MOST OUT OF YOUR MACHINE

FREE 'GET IT ALL' BUNDLE

SA22XPBNDL

WITH PURCHASE OF A LUMINAIRE 3 INNOV-IS XP3

- 4-Piece XP3 Luggage Set (SASEBXP3E)
- BES Blue Lettering Software (SABESBLUE)
- 24-Piece Disney Thread Set (ETPDISCL24)
- Design Viewer Software + 1,000 Designs (SADV1000)
- Angela Wolf Class
- Embroidery Garden 800 Design Pack (SAEMBGAR)

BUNDLE VALUE: \$5,029.97





FOR THE LOVE OF SEWING

Interest Free **FINANCING**



November 22nd - November 30th, 2022

0% Financing for 48 months on purchases of \$3,000 or more*

0% Financing for 60 months on purchases of \$5,000 or more*

*Using your Sewing & More Credit Card



FOR THE LOVE OF SEWING

A Sampling of Baby Lock Promotions

Special promotions available on many machines

Stop in to find your perfect new machine

baby lock

Regalia GET STARTED KIT



ALL THIS AND MORE Free!*

- Regalia Rear Handle Bar and Laser Light Kit
- Incredible Threadable AeroFil Quilt Box
- Regalia Ruler Base
- Towa Bobbin Case Tension Gauge

*WITH PURCHASE OF A REGALIA LONGARM QUILTING MACHINE WITH FRONT HANDLEBARS, BOBBIN WINDER AND KINETIC FRAME AT MSRP

Regalia GET STARTED KIT



REGALIA REAR HANDLE BAR AND LASER LIGHT KIT



INCREDIBLE THREADABLE AEROFIL QUILT BOX



REGALIA RULER BASE



TOWA BOBBIN CASE TENSION GAUGE



AEROQUILT VARIEGATED VALUE PACK



AEROQUILT SOLID COLOR VALUE PACK

ALL THIS AND MORE Free!

WITH PURCHASE OF A REGALIA LONGARM QUILTING MACHINE WITH FRONT HANDLEBARS, BOBBIN WINDER AND KINETIC FRAME AT MSRP

baby lock

baby lock

Allegro GET STARTED KIT



ALL THIS AND MORE Free!*

- Baby Lock Machine Trolley
- Madeira Sensa Green 18 Spool Smartbox
- 60-Day Trial of Online Sewing Classes
- Baby Lock 12 Piece Foot Kit

*WITH PURCHASE OF AN ALLEGRO SEWING AND QUILTING MACHINE AT MSRP.

Allegro GET STARTED KIT



BABY LOCK MACHINE TROLLEY



MADEIRA SENSE GREEN 18 SPOOL SMARTBOX



BABY LOCK 12 PIECE FOOT KIT



EXCLUSIVE RILEY BLAKE AND LORI HOLT MACHINE COVER KIT AND SEAM RIPPER



60-DAY TRIAL OF ONLINE SEWING CLASSES

ALL OF THIS Free!

WITH PURCHASE OF AN ALLEGRO SEWING AND QUILTING MACHINE AT MSRP.

baby lock

baby lock

Solaris Vision GET STARTED KIT



ALL THIS AND MORE *Free!**

- ☐ Palette 11 Embroidery Software
- ☐ Visionary Stitches Embroidery Collection
- ☐ Baby Lock 30 Piece Foot Kit
- ☐ 10x10" Magnetic Embroidery Hoop

*WITH PURCHASE OF A SOLARIS VISION SEWING AND EMBROIDERY MACHINE AT MSRP.

Solaris Vision GET STARTED KIT



PALETTE 11
EMBROIDERY SOFTWARE



VISIONARY STITCHES
EMBROIDERY COLLECTION



BABY LOCK
30 PIECE FOOT KIT



10X10" MAGNETIC
EMBROIDERY HOOP



MADEIRA SALSA GREEN
40 SPOOL QUILT BOX

ALL OF THIS AND MORE *Free!*

WITH PURCHASE OF A SOLARIS
VISION SEWING AND
EMBROIDERY MACHINE AT MSRP.

baby lock

**Purchase
a Solaris
Vision &
Choose
your
Offer!**



baby lock

Koala
studios

Solaris Vision FREE KOALA CABINET

RECEIVE A KOALA EMBROIDERY CENTER AND THE
VISIONARY STITCHES EMBROIDERY COLLECTION FREE WITH PURCHASE OF A
SOLARIS VISION SEWING AND EMBROIDERY MACHINE AT MSRP.

*US Customers may choose only 1 Solaris Vision Offer. Valid in the US Only.

creative™ ambition™ 640

sewing and embroidery machine

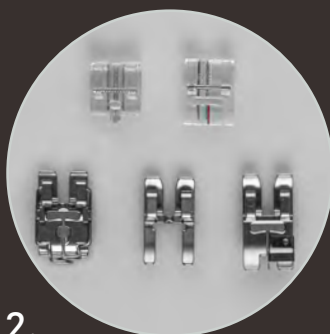
PFAFF
Perfection starts here.™

CELEBRATING 160 YEARS

For 160 years, PFAFF® has developed premium sewing machines distinguished by their sophisticated appearance, superior performance and ultimate design freedom. The new, limited-edition PFAFF creative™ ambition™ 640 sewing and embroidery machine is a love letter to this legacy. A delight to both sewists and embroidery lovers alike, this elegant machine boasts ease-of-use features and comes with introductory PC embroidery software and an exclusive accessory kit in celebration of the 160th anniversary.



- 1.
- Semi-Automatic Needle Threader**
Thread the needle easily with just the push of a lever.



- 2.
- Exclusive Accessory Kit**
Exclusive Accessory Kit with five bonus feet: Narrow Edge Foot for IDT™ System; Invisible Zipper Foot; Piping Foot; Couching/Braiding Foot for IDT System; and Open Toe Appliqué Foot for IDT System.



- 3.
- Software Included**
PREMIER+™ 2 Intro PC Software included - perfect for if you're new to embroidery or getting back into it.

creative™ ambition™ 640

sewing and embroidery machine

PFAFF
Perfection starts here.™

TOP FEATURES continued



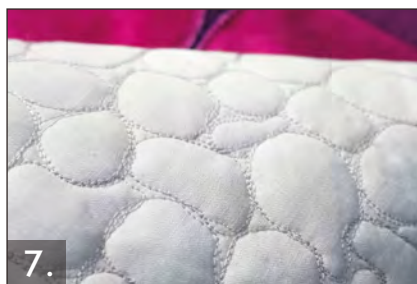
4. Large Embroidery Area
Embroider large projects with the included *creative™* Master Hoop that measures 240x150mm.



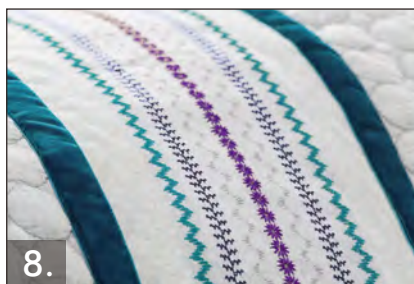
5. The Original IDT™ System
The Integrated Dual Feed technology from PFAFF precisely feeds all types of fabric from the top and bottom.



6. High Embroidery Speed
Embroider projects faster while maintaining the quality and precision that you expect from PFAFF.



7. Free Motion
Simply attach the optional free-motion presser foot for easy quilting and free-motion stippling.



8. A Wide Variety of Beautiful Stitches
Discover all the fantastic 7mm quality stitches from PFAFF - unique decorations with perfect stitches.



9. 101 Fantastic Embroidery Designs
Choose from a variety of high-quality designs.



Other Features

- One-Step Buttonhole
- 29 Needle Positions
- Needle Up/Down
- Two Embroidery Fonts Included
- Scale Embroidery Designs
- Design Basting
- Weight: 13kg (28.6lbs)
- Dimensions:
 - Length: 480mm
 - Width: 193mm
 - Height: 300mm

Whether you're new to sewing or a tenured enthusiast, this beautiful tribute to 160 years of PFAFF heritage has all the sewing and embroidery features you need to command your creativity.

Limited Edition
Pfaff Creative Ambition 640
\$1,999

PFAFF

CREATIVE ICON 2

Limited Time Bundle



The creative icon™ 2 sewing and embroidery machine marks a revolutionary step for sewists. A world first in the home sewing industry, artificial intelligence and voice control features give you the ultimate connectivity, enabling you to reach new levels of your craft, effortlessly.

BONUS BUNDLE INCLUDES:

- ✓ Luxe Luggage Set
- ✓ Ribbon Embroidery Attachment
- ✓ Scissor & Quilting Kit

