

Rae-Bon Sew & Quilt Shop

SPOOLS OF NEWS

April 2022

for the sewist in the know

A MACHINE THAT LISTENS TO YOU!

Do you ever talk to your sewing machine? I do and I wish it could respond or at least do what I ask. The Pfaff Creative Icon 2 can! It has speech recognition and can respond to over 40 requests including functions like “open Stitch Creator” and provide assistance “Which color is next?” Your machine will respond without ever having to take your hands off your project.



It is easy to place embroidery designs on the Pfaff Creative Icon 2 with a projector and camera. The projector will allow you to preview embroidery and stitches right on your project to see how it will look. The camera will scan your fabric and show it on the large 10.1” touchscreen to allow you to visualize your finished project. You have lots of space for embroidery with the 360 x 350 mm Grand Dream Hoop (14.17” x 13.78”).

The Pfaff Creative Icon 2 is the first and only machine on the market to have the option of an embellishment attachment. This attachment will automatically guide ribbons, beads, yarn, or cording for embroidery. It rotates 360° to ensure perfect material placement. This adorable lion was created with the ribbon attachment. So much dimension!



The patented Activstitch technology uses sensors to measure the fabric thickness and then regulate the amount of thread needed by both the needle and the bobbin. This results in perfect stitches on both sides of the fabric.

There are lots of sophisticated stitch techniques built in to the Creative Icon 2 including seven exclusive Pfaff stitch techniques:

- Floating Stitches
- Radiant Stitches
- Lace Edge Stitches
- Stacking Stitches
- Single, Double, & Triple Ribbon Stitches

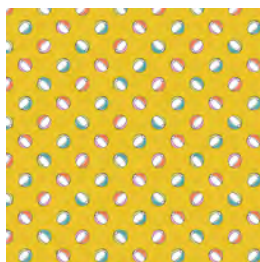
Plus you can customize each of the stitches and alter stitch angles so patterns will perfectly match around corners.

Also use the projector to visualize what your stitches will look like on your project or add a grid or guide beams to help you keep your stitches straight.

Store Hours: Monday-Friday: 10am-5:30 pm • Saturday: 10am-4pm • Sunday: Closed
3060 25th St SW Fargo, ND • 701-433-7203 • www.rae-bon.com • reddoor@rae-bon.com



WANDERLUST

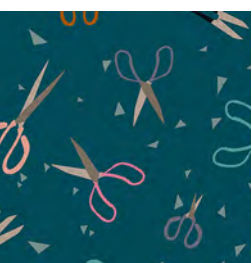


a sampling of
NEW FABRIC
THAT *just* ARRIVED

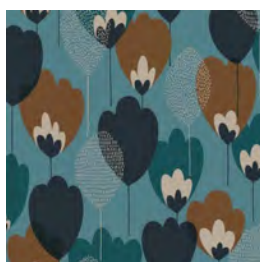


GABRIELLE NEIL DESIGN

**THE
WATERHOLE**



**A VARIETY OF
CANVAS**



APRIL 2022

Sun	Mon	Tue	Wed	Thu	Fri	Sat
					1 Woven Stars Purse Session 2 of 2 10:30 am-5 pm	2
3	4 Beginning Sewing: Insulated Lunchbox Session 2 of 2	5 Scan n Cut Group B Session 2 of 5 1 - 5 pm	6 Beginning Quilting Session 1 1 - 4 pm or 6 - 9 pm	7 Open Sew 10 am - 5 pm	8 Kaleidoscope Centerpiece Session 2 1 - 4 pm	9 Open Sew 10 am - 4 pm
10	11 Embroidery Lab Twisted Tote Session 1 of 2 11 am - 4 pm	12 Sew, What's New? 1 pm	13 Beginning Quilting Session 2 1 - 4 pm or 6 - 9 pm	14 Open Sew 10 am - 5 pm	15	16
17 Happy Easter!	18 Paper Piecing Club 1 - 4 pm or 6 - 9 pm	19 Embroidery Lab Twisted Tote Session 2 of 2 11 am - 4 pm	20 Beginning Quilting Session 3 1 - 4 pm or 6 - 9 pm	21 Border Quilting on the Solaris or Luminaire 1 - 5 pm	22 Learn to Cross Stitch 1 - 4 pm	23
24	25 Scan n Cut Group A Session 3 of 5 1 - 5 pm	26 Grandma's Blessings 1 - 4 pm	27 Beginning Quilting Session 4 1 - 4 pm or 6 - 9 pm	28 Open Sew 10 am - 5 pm	29 Metro Quilt Show	30 Metro Quilt Show

CLASS POLICIES

Call, visit our website, or stop in to sign up and pay for the class of your choice. Class fee is due when you register.

The class supply list will be available when you register and pay for the class. Supplies are not included in the class fee unless otherwise specified. Please have supplies purchased before class. Kits required are available at the store. No photocopied or sharing of patterns or books will be allowed in classes.

Please be setup and ready to begin class at the specified time.

We consider your enrollment to be a commitment to take the class and we in turn make a commitment to the instructor. No cancellations are allowed on classes. Thank you for not asking us to make exceptions.

Your sewing machine or serger must be in top working condition before you arrive at class. Students whose equipment is not working properly disturb and slow down the class. We service all brands of machines and sergers so come see us prior to the start of the class.

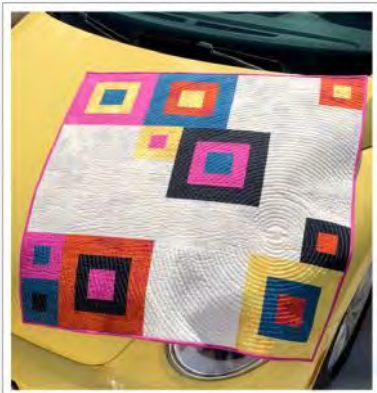
CLASSES

BEGINNING QUILTING

Wednesday, April 6, 13, 20, & 27

1:00 - 4:00 pm or 6:00 - 9:00 pm

Do you want to learn to quilt or improve your skills? This is the class for you; no experience needed. At the end of the 4 sessions, you will have learned the basic skills of quilt making: fabric selection, rotary cutting, accurate piecing, quilting, and binding. In the first class, we'll be discussing tools and selecting fabrics. A 20% discount will be given on supplies purchased during the first class. We want to make sure your quilt is completed at the end of the four sessions, so there will be homework each week. Bring your own machine. Class fee is \$75 plus supplies and book.



BORDER QUILTING ON THE SOLARIS OR LUMINAIRE

Thursday, April 21

1:00 - 5:00 pm

Did you know your Solaris and Luminaire have a function to embroider perfect borders on your quilts and runners? In this class, we will explore the split border function. You will need to bring a 16" x 30" runner with a 2 1/2" border and your Solaris or Luminaire to class. If you purchased your machine from Rae-Bon Sew & Quilt Shop, the class fee is waived. \$35 for a machine purchased elsewhere



EMBROIDERY LAB:

TWISTED TOTE

New Session Starting!

Monday, April 11 & May 9

11:00 am - 4:00 pm

In March & April, we'll be stitching up the HoopSisters Twisted Tote. All the blocks for this tote are made on your embroidery machine. The tote is lined and has four zippered pockets on the outside and four pockets on the inside. The large square bottom makes it easy to tote around bigger items. Choose between two sizes: large (minimum hoop size 7 3/4" x 9") or medium (minimum hoop size 5 3/4" x 6 3/4")

Purchase the Twisted Tote Embroidery CD and HoopShape bundler for \$56.99 and the class fee is waived. You will also need to purchase fabric. In the first session, bring your embroidery machine and embroider out the blocks. During the second session, bring your sewing machine to assemble the tote.



OPEN SEW

Bring whatever project you'd like to work on and join your friends (or make new ones). We'll provide irons and the space to work. You bring your project and any supplies you need.

Open Sew is free, but sign up is required to reserve your spot as space is limited.

Thursday, April 7: 10 am - 5 pm

Saturday, April 9: 10 am - 4 pm

Thursday, April 14: 10 am - 5 pm

Thursday, April 28: 10 am - 5 pm

GRANDMA'S BLESSINGS

Tuesday, April 26
1:00 - 4:00 pm

Our latest block of the month is a great technique builder. Each month Sandy will show you how to create these classic blocks with a modern twist. You'll be piecing the blocks slightly oversized and using the Studio 180 tools to trim the blocks to the precise size. Bring your sewing machine and create your monthly blocks in class. The class is only open to those participating in the Grandma's Blessings Block of the Month. For April's block we'll be using the Tucker Trimmer to create a shaded four patch block.



LEARN TO CROSS STITCH

Friday, April 22
1:00 - 4:00 pm

Learn the ultimate mindful craft of counted cross stitch. Diane will teach you all her tips while you create this beautiful modern design. Color options available. The class fee is \$45 and includes all the supplies. Just bring a small pair of scissors.



SEW, WHAT'S NEW?

Tuesday, April 12
1:00 pm

New items are always arriving at Rae-Bon Sew & Quilt Shop! Stop by each month for a fun filled social hour and show of everything new (fabric, notions, machines, etc.). Receive a 10% discount on any new items highlighted that day. Plus bring whatever you've been working - everyone loves a good show and tell.



WOVEN STARS PURSE

Part I: Friday, March 25: 1:00 - 5:00 pm
Part II: Friday, April 1: 10:30 - 5:00 pm

This showstopping bag features a woven back panel and woven front pocket. It's a step up from traditional weaving as the strips are woven in three different directions. In the first class, you'll create the woven panels. During the second session, you'll bring your sewing machine and we'll assemble the bag. The bag features an interior slip pocket, an interior zippered pocket, exterior zippered pocket, cross body strap, and handles.

The class fee is \$75 and includes the pattern for turning your weaving into a purse. You will need to purchase the Woven Stars pattern, fabric, and supplies.



CONTINUING CLASSES

Quite a few classes from March continue into April. Unfortunately it's too late to join these multiple session classes, but here's a reminder of dates for those of you who enrolled last month.

Beginning Sewing: Insulated Bag

Session 2: Monday, April 4 from 1-4 pm or 6-9 pm

Embroidery Lab: Twisted Tote

Session 2: Tuesday, March 19 from 11 am - 4pm

Kaleidoscope Centerpiece

Session 2: Friday, April 8 from 1-4 pm

Learn to Use Your ScanNCut

Group A: Monday, April 25 from 1-5 pm

Group B: Tuesday, March 5 from 1-5 pm

Paper Piecing Club

Monday, April 18 from 1-4 pm or 6-9 pm

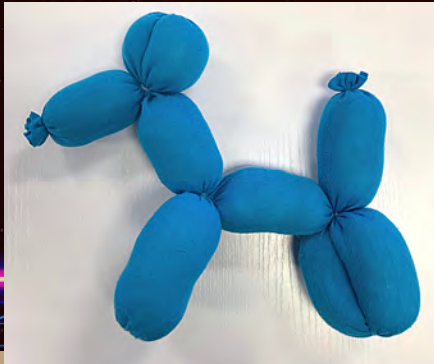
KIDS SEWING CAMP

Throwback to the 80s

JUNE 13-16 2022

1:00 - 4:00 PM

limit 6 students ages 8-15



Celebrate all the best of the 80s with these five totally rad projects. No sewing experience necessary! Mary will teach you how to use a sewing machine while creating these projects:

- Tetris Pillow
- Cassette Tape Tote
- Stuffed Balloon Animal
- Set of Scrunchies
- Pac Man Keychain

\$199

**INCLUDES INSTRUCTION, ALL SUPPLIES,
AND USE OF A SEWING MACHINE**



IS COMING!

April 29 & 30, 2022

Hilton Garden Inn

*It's been a
long time
coming, but
we're ready!*

Enter your quilts!

Volunteer to help!

Come to the show!

Mark your 2022 Calendar

Quilt Entry due **March 19**

Quilt drop off **April 24**

Quilt Judging **April 26 & 27**

Quilt Show Hanging **April 28**

Metro Quilt Expo **April 29-30**

www.ndquilts.com