

FREE
PATTERN

CAMELOT®

Freshly Made to bring your ideas to life.

GILDED

Sunflower Quilt (Q-062)

by Heidi Pridemore of The Whimsical Workshop

Difficulty Level: Intermediate

Finished Size: 60" x 75"



Exclusive Quilt Design by Heidi Pridemore of The Whimsical Workshop made for Camelot Fabrics.
The direction of the fabrics in the digital imagery may not be accurate to the final product.



camelotfabrics.com
info@camelotfabrics.com

FREE
PATTERN

CAMELOT®

Freshly Made to bring your ideas to life.

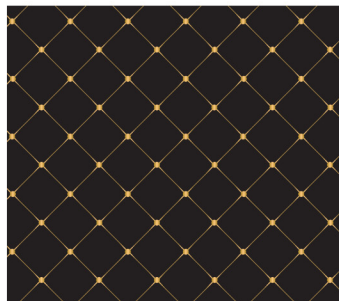
COLLECTION:
GILDED

Sunflower Quilt (Q-062)

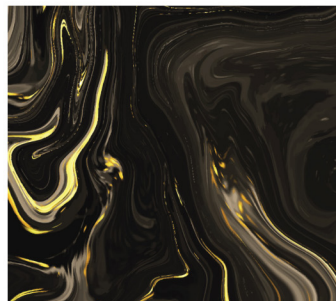
Fabric Requirements



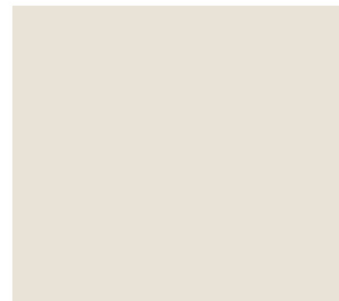
Fabric A: 21240901L-01



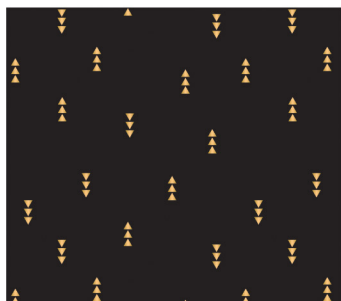
Fabric B: 21240903L-02



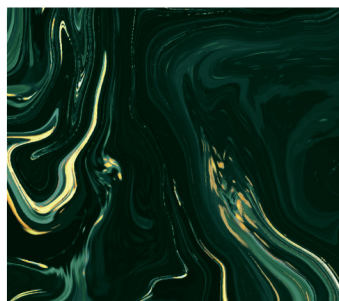
Fabric C: 21240902L-01



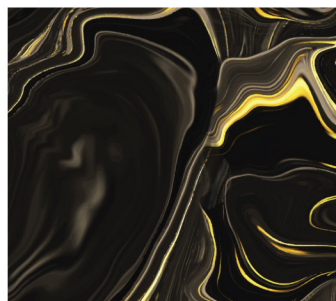
Fabric D: 214-0003



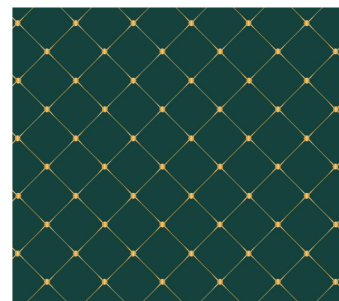
Fabric E: 2145002L #3



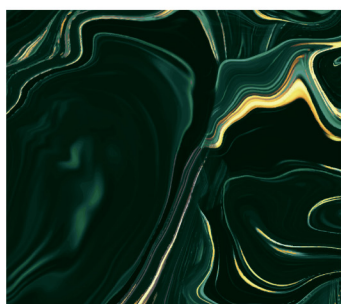
Fabric F: 21240902L-02



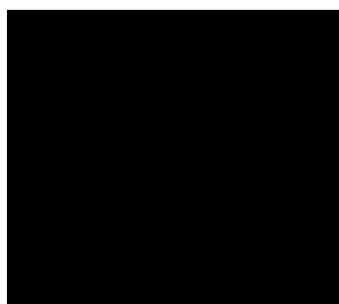
Fabric G: 21240902L-01



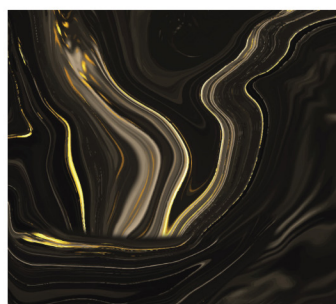
Fabric H: 21240903L-03



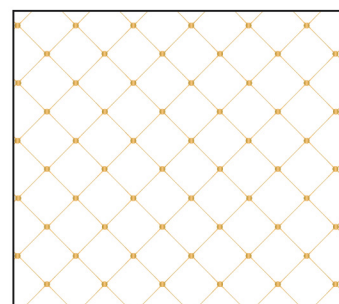
Fabric I: 21240902L-02



Fabric J: 214-0002

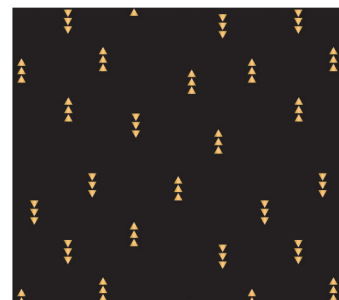


Fabric K: 21240902L-01



Fabric L: 21240903L-01

Fabric	SKU	Yardage	12 Kits
A	21240901L-01	2/3 Yard	1 Bolt
B	21240903L-02	1/2 Yard	1 Bolt
C	21240902L-01	1/3 Yard	1 Bolt
D	214-0003	1-3/4 Yards	2 Bolts
E	2145002L #3	3/8 Yard	1 Bolt
F	21240902L-02	1/4 Yard	1 Bolt
G	21240902L-01	3/8 Yard	1 Bolt
H/BINDING	21240903L-03	1-1/4 Yards	1 Bolt
I	21240902L-02	1/3 Yard	1 Bolt
J	214-0002	3/8 Yard	1 Bolt
K	21240902L-01	2 Yards	2 Bolts
L	21240903L-01	1/2 Yard	1 Bolt
BACKING	2145002L #3	4 Yards	4 Bolts



Suggested Backing:
2145002L #3

OTHER TOOLS & SUPPLIES

- 1 yard of quilt batting (58" wide)
- sewing machine & coordinating thread
- rotary cutter & mat
- iron & pressing surface
- fabric shears
- straight pins
- fabric marker
- straight edge ruler & measuring tape

NOTES

- For best results read through all the instructions before starting.
- Please wash, dry & iron your fabric before beginning, and trim selvages.
- Unless otherwise directed, sew all seams with an accurate 1/4" allowance and the fabrics' Right Sides together.
- Press the seams as you go, pressing away from the center of the block.
- WOF = Width of Fabric (42"), LOF = Length of Fabric
- HST = Half Square Triangle

CUTTING

Fabric A

Cut (2) 9-1/2" x WOF strips - sub-cut (6) 9-1/2" squares.

Fabric B

Cut (2) 3-7/8" x WOF strips - sub-cut (12) 3-7/8" squares.

Cut (2) 3-1/2" x WOF strips - sub-cut (24) 3-1/2" squares.

Fabric C

Cut (24) Template 2 triangles.

Fabric D

Cut (3) 3-7/8" x WOF strips - sub-cut (24) 3-7/8" squares.

Cut (8) 3-1/2" x WOF strips - sub-cut (96) 3-1/2" squares.

Cut (48) Template 1 triangles.

Cut (48) Template 3 triangles.

Fabric E

Cut (2) 3-7/8" x WOF strips - sub-cut (12) 3-7/8" squares.

Fabric F

Cut (1) 3-1/2" x WOF strip - sub-cut (6) 3-1/2" squares.

Fabric G

Cut (2) 4-1/4" x WOF strips - sub-cut (12) 4-1/4" squares. Cut the squares across both diagonals to make (48) 4-1/4" triangles.

Fabric H - includes Binding

Cut (2) 3-7/8" x WOF strips - sub-cut (12) 3-7/8" squares.

Cut (3) 2" x WOF strips. Sew the strips together end-to-end with diagonal seams and cut (2) 2" x 60-1/2" strips.

Cut (3) 2" x WOF strips. Sew the strips together end-to-end with diagonal seams and cut (2) 2" x 48-1/2" strips.

Cut (7) 2-1/2" x WOF strips for the binding.

Fabric I
Cut (24) Template 2 triangles.

Fabric J
Cut (4) 1-1/2" x WOF strips. Sew the strips together end-to-end with diagonal seams and cut
(2) 1-1/2" x 63-1/2" strips.
Cut (3) 1-1/2" x WOF strips. Sew the strips together end-to-end with diagonal seams and cut
(2) 1-1/2" x 50-1/2" strips.

Fabric K
Cut (2) 5-1/2" x 65-1/2" LOF strips.
From the remaining fabric, cut (2) 5-1/2" x 60-1/2" WOF strips, piece as needed.

Fabric L
Cut (2) 4-1/4" x WOF strips - sub-cut (12) 4-1/4" squares and (2) 3-7/8" squares. Cut the 4-1/4" squares across both diagonals to make (48) 4-1/4" triangles.
Cut (1) 3-7/8" x WOF strip - sub-cut (10) 3-7/8" squares.

Backing
Cut (2) 68" x WOF strips for the backing. Sew the strips together and trim to make the
68" x 83" back.

Note: The arrows in the figures represent the fabric print direction. Pay attention to the fabric and unit orientations when assembling the various components.

BLOCK ASSEMBLY

1. Place (1) 3-1/2" Fabric B square on the top left corner of (1) 9-1/2" Fabric A square, right sides together (Fig. 1). Sew across the diagonal of the smaller square from the upper right corner to the lower left corner (Fig. 1). Flip open the triangle formed and press. Trim away the excess fabric from behind the triangle 1/4" away from the sewn seam (Fig. 2).
2. Follow Figure 3 for the seam direction to add a 3-1/2" Fabric B square to each of the remaining corners of the 9-1/2" Fabric A square to make (1) Unit 1 square (Fig. 4).
3. Repeat Steps 1-2 to make (6) Unit 1 squares total.

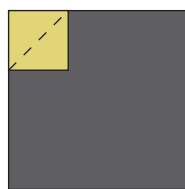


Fig. 1



Fig. 2

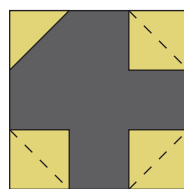


Fig. 3

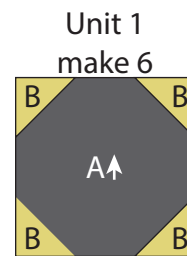
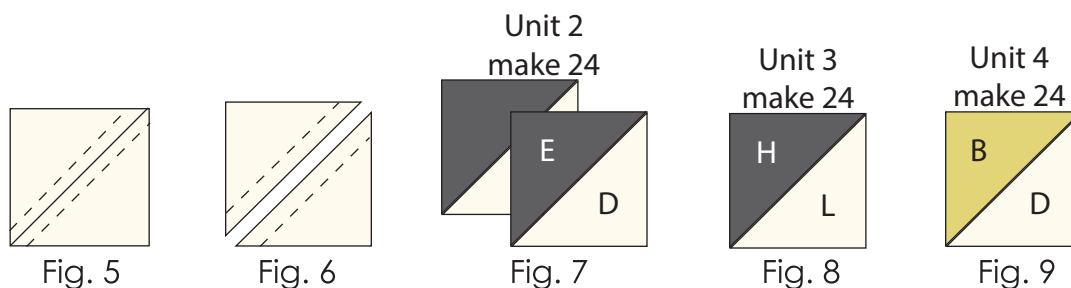


Fig. 4

4. Place (1) 3-7/8" Fabric D square on top of (1) 3-7/8" Fabric E square, right sides together. Draw a line across the diagonal of the top square (Fig. 5). Sew 1/4" away from each side of the drawn diagonal line (Fig. 5). Cut the (2) squares apart on the drawn diagonal line (Fig. 6) to make (2) half-square triangles. Trim the half-square triangles to measure 3-1/2" square to make (2) Unit 2 squares (Fig. 7). Repeat to make (24) Unit 2 squares total.

5. Repeat Step 4 and refer to Figures 8- 9 for fabric identification and placement to make (24) Unit 3 squares and (24) Unit 4 squares.



6. Sew (1) 4-1/4" Fabric G triangle and (1) 4-1/4" Fabric L triangle together along short sides. Repeat to make a second triangle. Sew together the (2) newly sewn triangles along their long sides to make (1) 3-1/2" Unit 5 square (Fig. 10). Repeat to make (24) Unit 5 squares total.

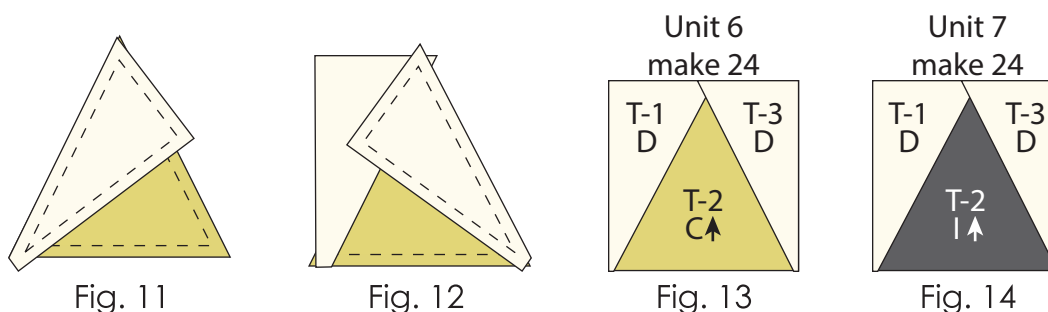


7. Place (1) Fabric D Template 1 triangle on top of (1) Fabric C Template 2 triangle, right sides together, aligning the left sides (Fig. 11). Sew the (2) triangles together along the left side. Press the smaller triangle open.

8. Place (1) Fabric D Template 3 triangle on top of the Fabric C Template 2 triangle, right sides together, aligning the right sides (Fig. 12). Sew the (2) triangles together along the right side. Press the smaller triangle open to make (1) Unit 6 square (Fig. 13). Trim the block to measure 3-1/2" square.

9. Repeat Steps 7-8 to make (24) Unit 6 squares total.

10. Repeat Steps 7-8 and refer to Figure 14 for fabric identification, placement and orientation to make (24) Unit 7 squares.



11. Sew (1) Unit 3 square to each side of (1) Unit 5 square to make the top row. Repeat to make the bottom row. Sew (1) Unit 5 square to each side of (1) 3-1/2" Fabric F square to make the middle row. Sew together the rows lengthwise to make (1) 9-1/2" Unit 8 square (Fig. 15). Repeat to make (6) Unit 8 squares total.

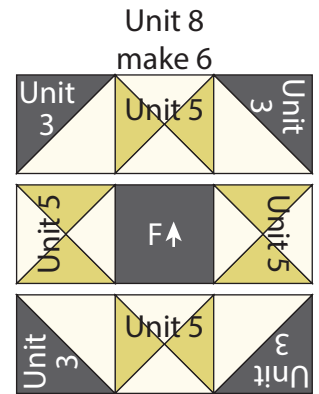


Fig. 15

12. Sew (1) 3-1/2" Fabric D square to each side of (1) Unit 6 square to make (1) Unit 9 strip (Fig. 16). Repeat to make (24) Unit 9 strips total.

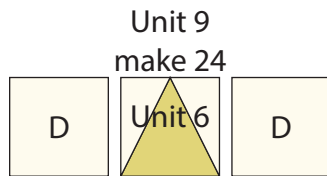


Fig. 16

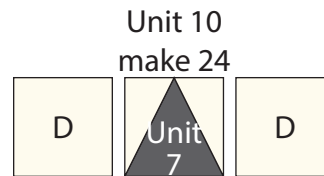


Fig. 17

14. Sew (1) Unit 2 square to each end of (1) Unit 9 strip to make the top row. Repeat to make the bottom row. Sew (1) Unit 9 strip to each side of (1) Unit 1 square to make the middle row. Sew together the (3) rows lengthwise to make (1) 15-1/2" Block One square (Fig. 18). Repeat to make (6) Block One squares total.

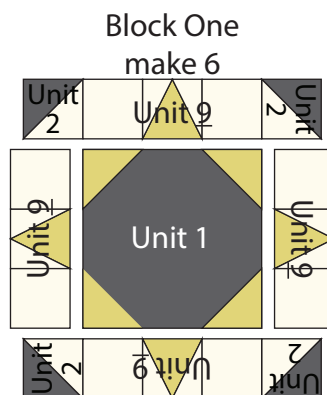


Fig. 18

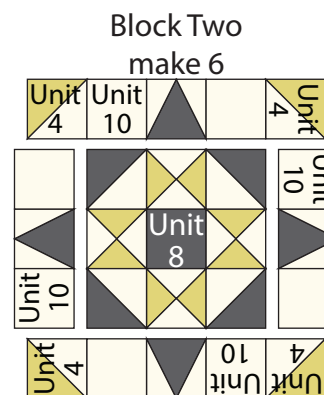


Fig. 19

15. Repeat Step 14 and refer to Figure 19 for component identification, placement and orientation to make (6) Block Two squares.

16. Sew (1) Block One square to each side of (1) Block Two square to make Row One (Fig. 20). Repeat to make Row Three.

17. Sew (1) Block Two square to each side of (1) Block One square to make Row Two (Fig. 20). Repeat to make Row Four.

18. Sew together the (4) pieced Rows, lengthwise and in numerical order from the top to the bottom, to make the 45-1/2" x 60-1/2" Center Block (Fig. 20).

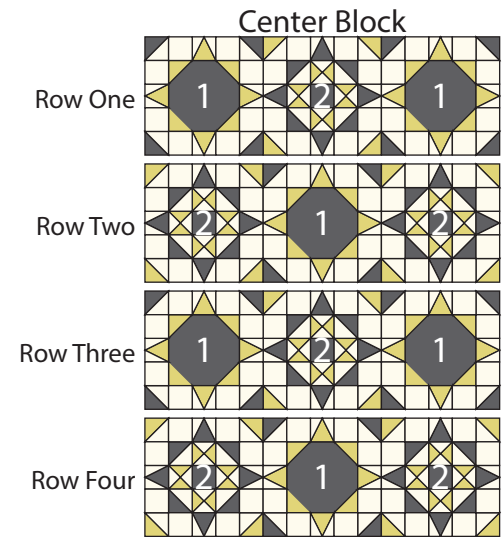


Fig. 20

QUILT TOP ASSEMBLY

Follow the Quilt Layout while assembling the quilt top.

19. Sew (1) 2" x 60-1/2" Fabric H strip to each side of the Center Block. Sew (1) 2" x 48-1/2" Fabric H strip to the top and to the bottom of the Center Block.

20. Sew (1) 1-1/2" x 63-1/2" Fabric J strip to each side of the Center Block. Sew (1) 1-1/2" x 50-1/2" Fabric J strip to the top and to the bottom of the Center Block.

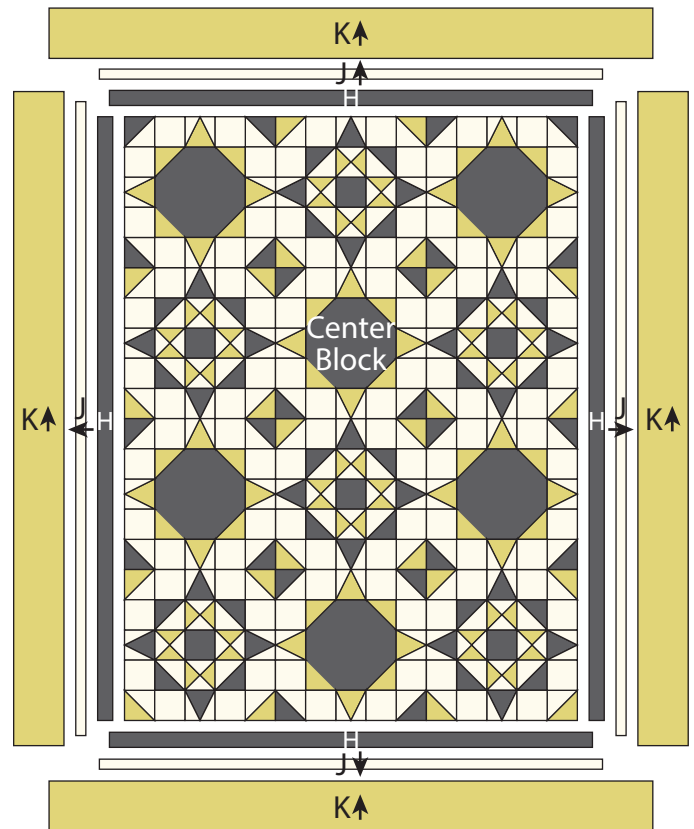
21. Sew (1) 5-1/2" x 65-1/2" Fabric K strip to each side of the Center Block. Sew (1) 5-1/2" x 60-1/2" Fabric K strip to the top and to the bottom of the Center Block to make the quilt top.

FINISHING THE QUILT

22. Layer and quilt as desired.

23. Sew the (7) 2-1/2" x WOF Fabric H strips together, end to end with 45-degree seams, to make the binding. Fold this long strip in half lengthwise with wrong sides together and press.

24. Bind as desired.



100% Templates

1" square
for scale

**Note: All templates should
be cut from a single
layer of fabric.**

