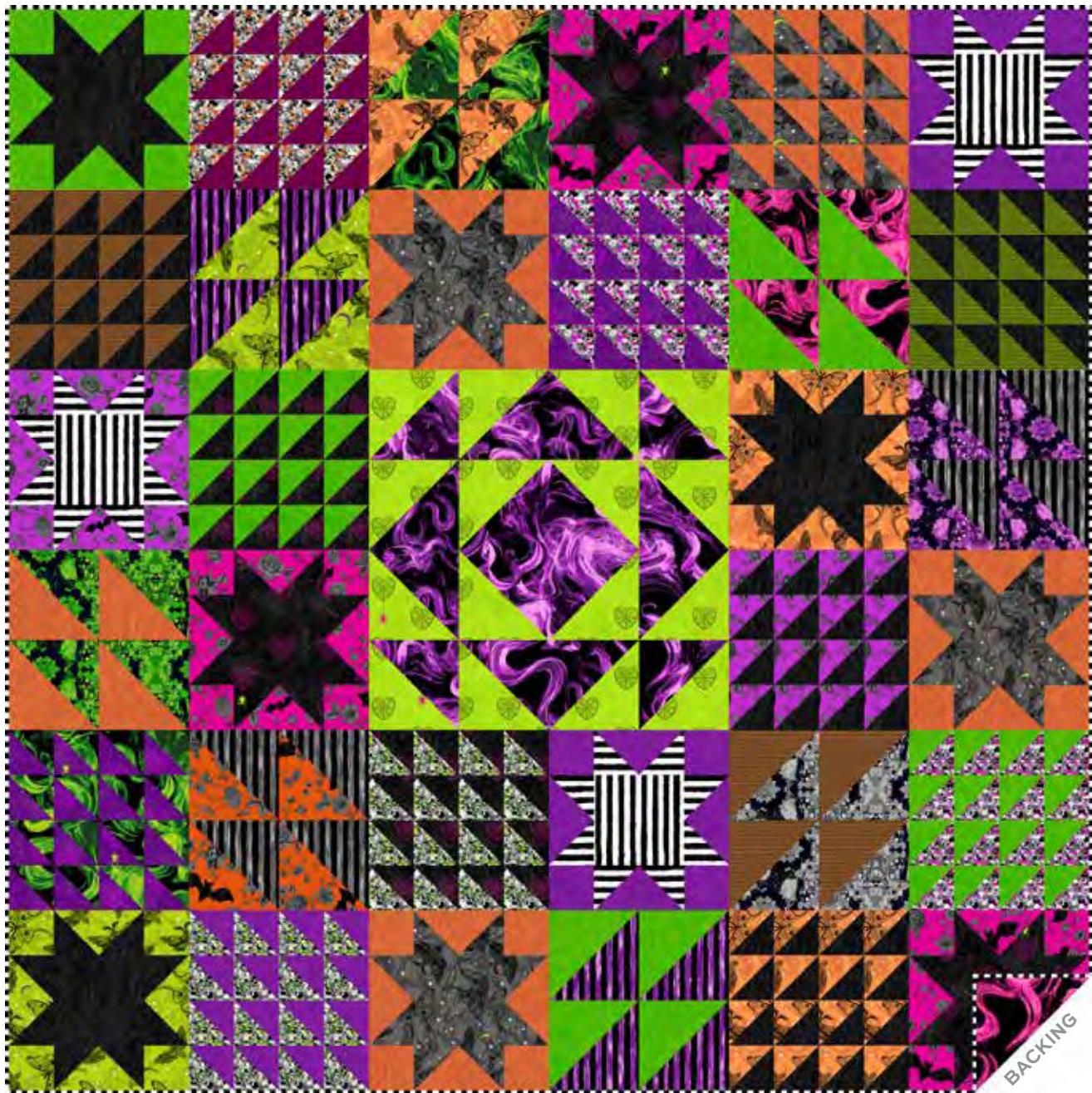


Phantasm + Phantasm 108s

LIBS ELLIOTT



Shivers Quilt designed by: **Libs Elliott**

Quilt Size: **72" x 72"** • Skill Level: **Confident Beginner**

Shivers Quilt

Introducing Andover Fabrics new collection: **PHANTASM + PHANTASM 108s** by Libs Elliott

Quilt designed by Libs Elliott

Quilt finishes 72" x 72"

32 Blocks: 12" x 12"

1 Block: 24" x 24"

What goes bump in the night? These subtle prints of spider-web hearts, bats, night moths, and murky skull images just might bring a chill to the viewer. A variety of easy-to-piece blocks are arranged around a larger center block. Have fun altering fabric placement as you wish.

Making the Quilt

When cutting patches and making the blocks, refer to these labels, the block diagrams, and the list of fabrics on the last page of the pattern.

1 1516-C	2 1516-G	3 1516-O
4 1517-E	5 1517-O	6 1517-P
8 1518-E	9 1518-G	11 1518-P
12 1519-C	13 1519-G	14 1519-P
15 1520-G	16 1520-K	17 1520-P
18 1521-E	19 1521-G	20 1521-O
21 1522-C	22 1522-K	23 1522-P
24 1523-E	25 1523-G	26 1523-O
27 1524-G	28 1524-K	29 1524-O
30 1524-P	32 AW-1525-E	

Fabric Requirements Yardage

Fabric 28 1 yard

FROM EACH ¾ yd
Fabrics 16, 29

FROM EACH ½ yd
Fabrics 1, 3, 6, 11, 15, 27

FROM EACH ⅜ yd
Fabrics 4, 22, 30

FROM EACH fat ¼
Fabrics 2, 9, 17, 18, 19, 21, 23, 26

FROM EACH fat ⅛
Fabrics 5, 8, 12, 13, 14, 20, 24, 25

Fabric 22 (Binding) ⅝ yard

Fabric 32 (Backing) 2½ yards

Cutting Directions

Note: Read assembly directions before cutting patches. All measurements are cut sizes and include ¼" seam allowances. A fat ⅛ is a 9" x 20"-22" cut of fabric. A fat ¼ is an 18" x 20"-22" cut. WOF designates the width of fabric from selvedge to selvedge (approximately 42" wide).

Cutting for ONE Star Block

Background:

Cut (4) squares 3½"

Cut (4) rectangles 3½" x 6½"

Star:

Cut (1) square 6½"

Cut (8) squares 3½"

Cutting for ONE Tile Block

Lighter Print

Cut (8) squares 3⅞" (or 4") for HST (Read Step 4 before cutting)

Darker Print

Cut (8) squares 3⅞" (or 4") for HST

Cutting for ONE Four-Patch Block

Lighter Print

Cut (2) squares 6⅞" (or 7") for HST

Darker Print

Cut (2) squares 6⅞" (or 7") for HST

Cutting for ENTIRE Quilt

(Feel free to change the number of blocks made in each fabric.)

Fabric 1

Cut patches for 3 Stars & 1 Tile Block

Fabric 2

Cut patches for 1 Star & 1 Four-Patch Block

Fabric 3

Cut patches for 1 Star, 1 Tile Block & 1 Four-Patch Block

Fabric 4

Cut patches for 3 Stars

Fabric 5

Cut patches for 1 Four-Patch Block

Fabric 6

Cut patches for 1 Star & 1 Tile Block

Fabric 8

Cut patches for 1 Four-Patch Block

Fabric 9

Cut patches for 1 Tile Block & 1 Four-Patch Block

Shivers Quilt

Fabric 11

Cut (8) squares $6\frac{7}{8}$ " (or 7") for HST for Center Block

Fabric 12

Cut patches for 1 Four-Patch Block

Fabric 13

Cut patches for 1 Four-Patch Block

Fabric 14

Cut patches for 1 Four-Patch Block

Fabric 15

Cut (8) squares $6\frac{7}{8}$ " (or 7") for HST for Center Block

Fabric 16

Cut patches for 3 Stars & 2 Tile Blocks

Fabric 17

Cut patches for 2 Tile Blocks

Fabric 18

Cut patches for 2 Tile Blocks

Fabric 19

Cut patches for 2 Tile Blocks

Fabric 20

Cut patches for 1 Tile Block

Fabric 21

Cut patches for 2 Four-Patch Blocks

Fabric 22

Cut patches for 3 Stars

Fabric 23

Cut patches for 2 Four-Patch Blocks

Fabric 24

Cut patches for 1 Tile Block

Fabric 25

Cut patches for 1 Tile Block

Fabric 26

Cut patches for 1 Tile Block & 1 Four-Patch Block

Fabric 27

Cut patches for 1 Star, 2 Tile Blocks & 2 Four-Patch Blocks

Fabric 28

Cut patches for 3 Stars & 4 Tile Blocks

Fabric 29

Cut patches for 3 Stars, 1 Tile Block & 1 Four-Patch Block

Fabric 30

Cut patches for 2 Stars and 1 Tile Block

Binding (22)

Cut (8) strips $2\frac{1}{2}$ " x WOF

Backing (32)

Cut (1) length 82" x 82"

Making the Quilt

1. Refer to the block diagrams for fabric placement and number of blocks to make in each combination. All the blocks are made with quick stitch-and-flip methods. Fast Flying Geese are used in Star Blocks. Draw a diagonal line on the $3\frac{1}{2}$ " star fabric squares. Position a marked square as shown on one end of a $3\frac{1}{2}$ " x $6\frac{1}{2}$ " rectangle (Diagram 1). Stitch on the marked diagonal line. Cut away the excess fabric. Press the corner up. Repeat this step on the opposite end of the rectangle (Diagram 2). Make 4 Flying Geese for each Star Block.
2. If you wish the striped fabric #22 to be oriented as shown in the block diagrams, follow these steps when making the Flying Geese for the Star Blocks. Position the striped $3\frac{1}{2}$ " squares on the corners of the rectangle as shown in Diagram 3. Be sure that when pressed up, the stripes are vertical as shown. Make 2 Flying Geese like this. Refer to Diagram 4 and orient the striped $3\frac{1}{2}$ " squares as shown. This results in Flying Geese with stripes that are horizontal. Make 2 Flying Geese like this.

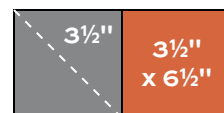


Diagram 1



Diagram 2



Flying Geese
Make 4 for each
Star Block

Fabric 22



Diagram 3



Make 2 for 1 Star Block



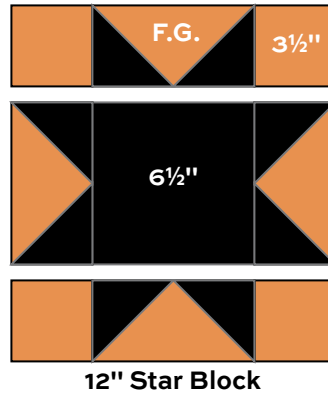
Diagram 4



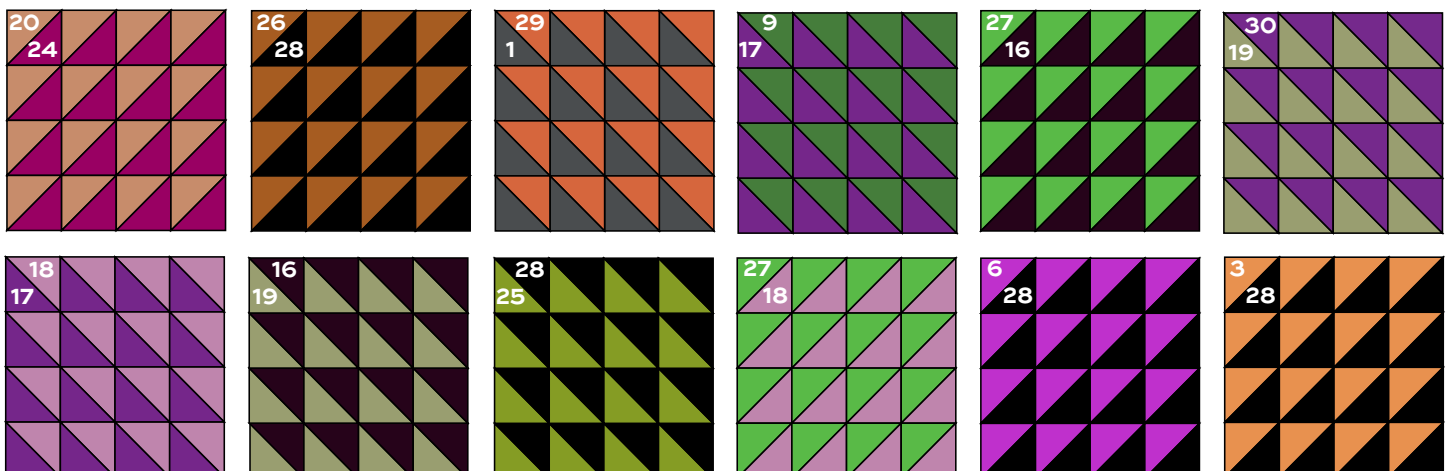
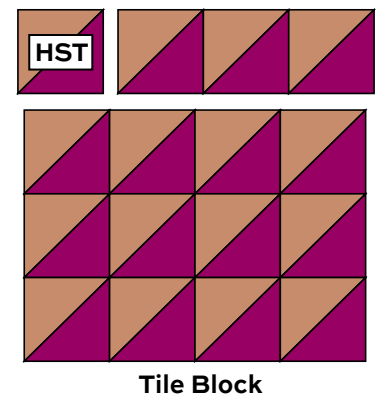
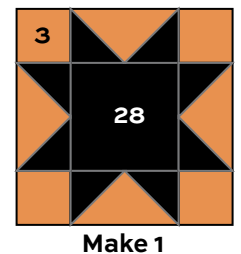
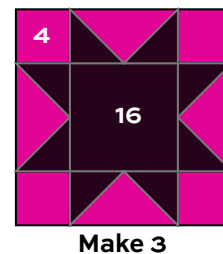
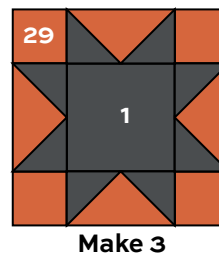
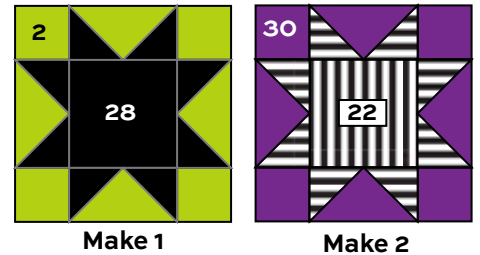
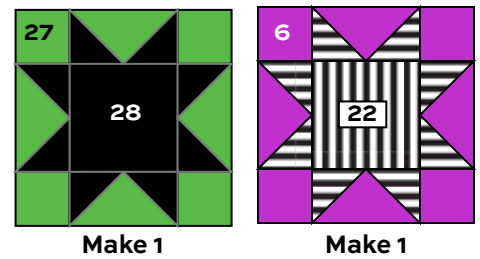
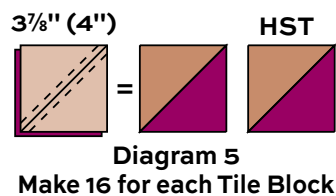
Make 2 for 1 Star Block

Shivers Quilt

3. Referring to the block diagram, arrange the background $3\frac{1}{2}$ " squares, 4 Flying Geese, and the center $6\frac{1}{2}$ " square in 3 rows as shown. Be careful to orient the Flying Geese correctly. If using the striped prints, be sure to position 2 like Flying Geese at the top and bottom of the center square, and the other 2 on the sides. Join the parts into rows, and then join the rows. Make the number of Star Blocks as shown in the diagrams.

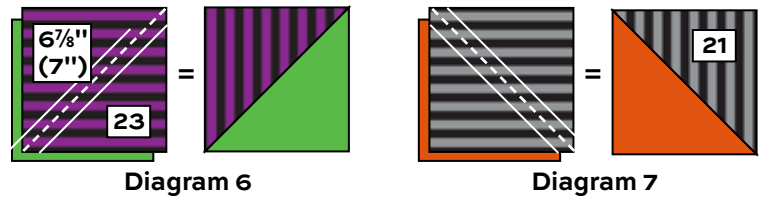


4. The Tile Blocks are made with simple Half-Square Triangles (HST). Use your favorite method to make HST that finish 3", or follow these directions. Fabric squares cut 4" will be trimmed after stitching. Cut the squares $3\frac{7}{8}$ " if you do not wish to trim later. Draw a diagonal line on the wrong side of the lighter squares. With right sides together, position a marked square on top of a darker square. Stitch $\frac{1}{4}$ " on each side of the diagonal line (Diagram 5). Cut apart on the drawn line. Press the seam allowance toward the darker fabric. Trim the square to $3\frac{1}{2}$ " if needed. Make 16 HST for each block. Arrange and join the HST in 4 rows of 4 HST each, being careful to orient the triangles as shown in the individual blocks. Make a total of 12 Tile Blocks.

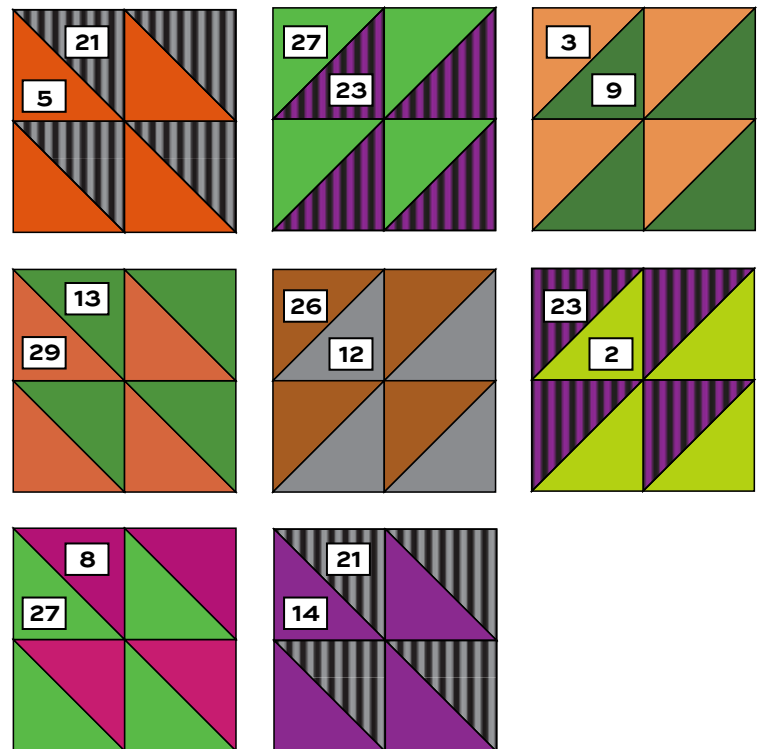


Shivers Quilt

- Four-Patch Blocks also use HST made with $6\frac{7}{8}$ " (or 7") squares. Refer to Step 4 to make 4 HST alike for each block. To make HST so the striped fabrics (#21 and #23) look like those in the quilt, follow Diagrams 6 and 7 to orient the striped squares and stitch diagonally in the directions shown. Trim the squares to $6\frac{1}{2}$ " as needed. Two blocks require stripes as shown in Diagram 6, and two as in Diagram 7. Join 4 like HST in 2 rows, rotating the HST as needed. Join the rows to make a block. Make a total of 8 Four-Patch Blocks.



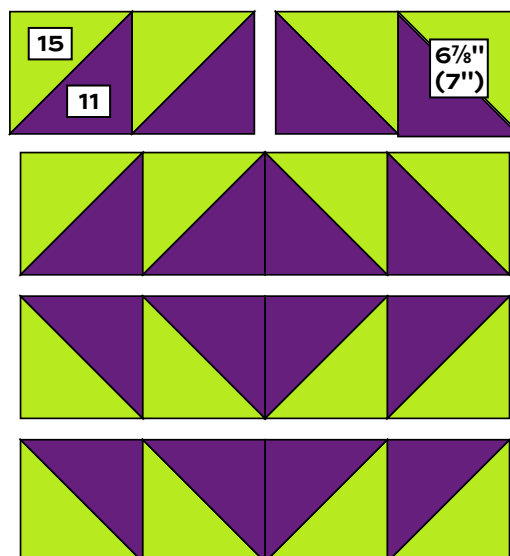
- The Center Block is made with 16 HST that use $6\frac{7}{8}$ " (or 7") squares. Make the HST as described above. Trim to $6\frac{1}{2}$ " as needed. Arrange the HST in 4 rows of 4 HST each, rotating as shown. Make 1 Center Block.
- Referring to the Quilt Assembly, arrange the blocks in the order shown, paying attention to the placement and orientation of each block. Stand back to be certain you are satisfied with the design. Join the blocks into rows. Finally, join the rows.



12" Four-Patch Block – Make 1 each

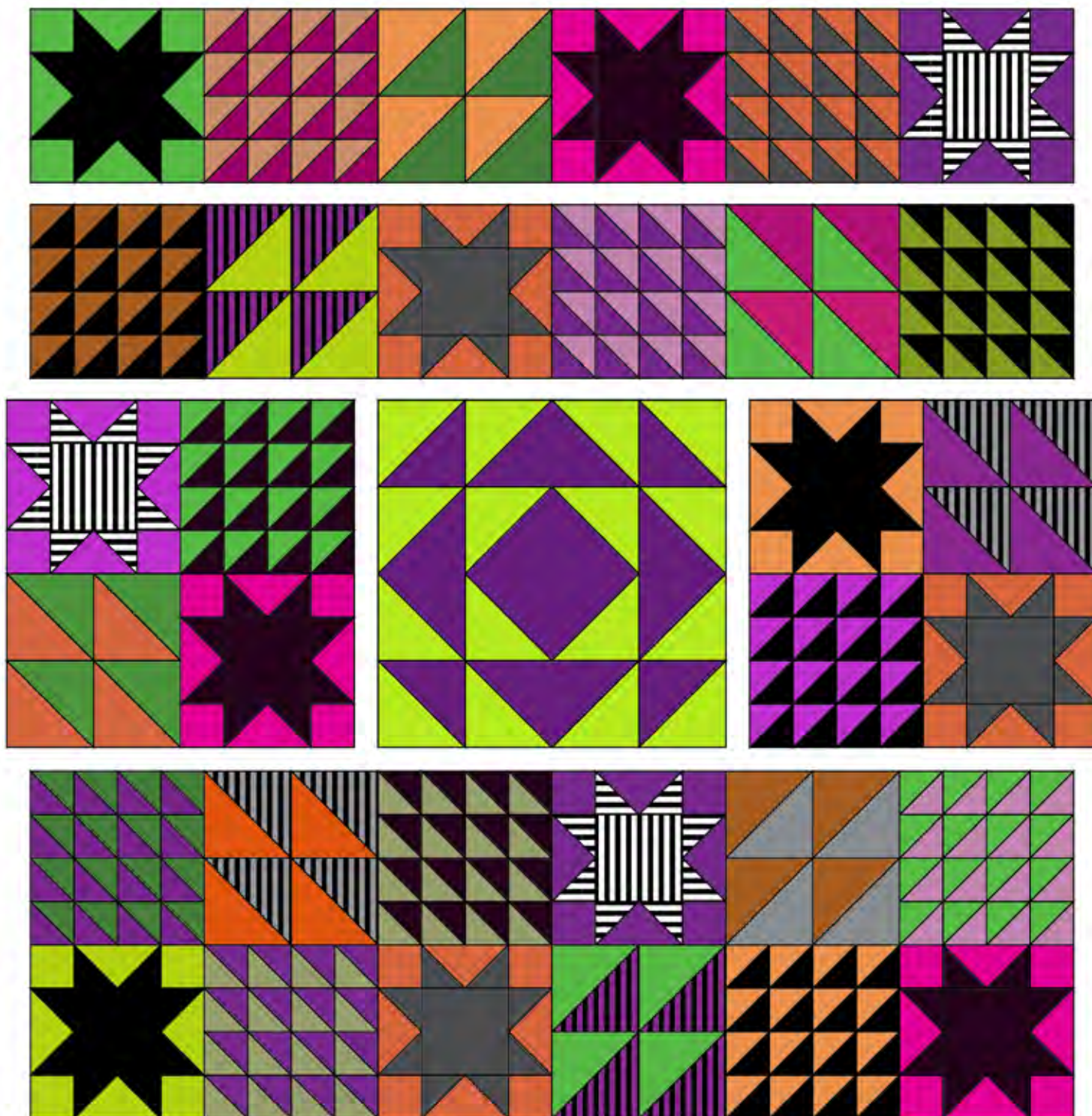
Finishing the Quilt

- Layer the quilt with batting and backing and baste. Quilt in the ditch around patches. Or, quilt an overall design. Bind to finish the quilt.



24" Center Block – Make 1

Shivers Quilt



Quilt Assembly

Phantasm + Phantasm 108s LIBS ELLIOTT



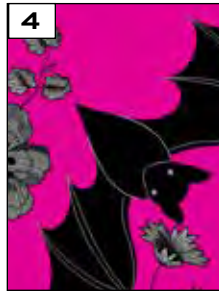
1516-C



1516-G



1516-O



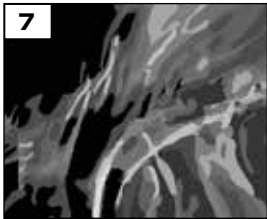
1517-E



1517-O



1517-P



1518-C*



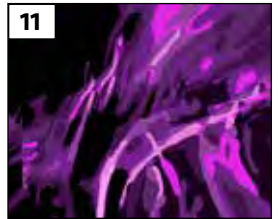
1518-E



1518-G



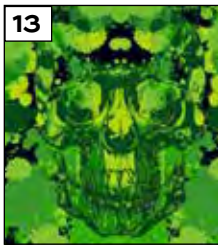
1518-O*



1518-P



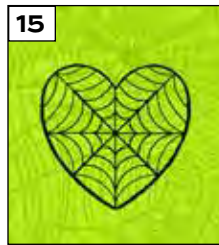
1519-C



1519-G



1519-P



1520-G



1520-K



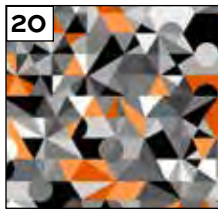
1520-P



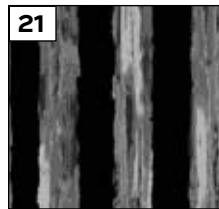
1521-E



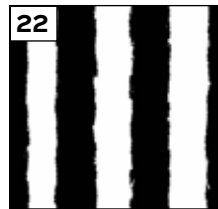
1521-G



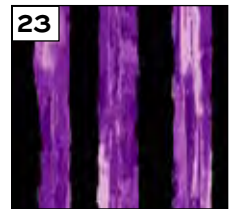
1521-O



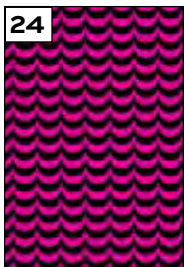
1522-C



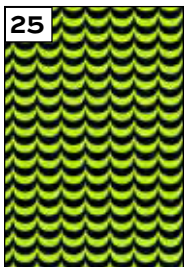
1522-K



1522-P



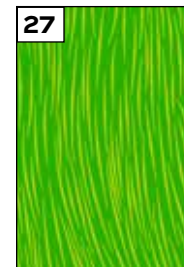
1523-E



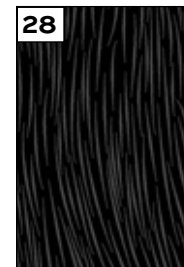
1523-G



1523-O



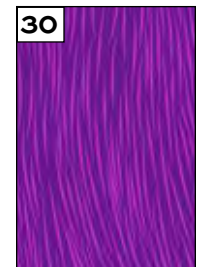
1524-G



1524-K



1524-O



1524-P

Additional fabric from PHANTASM 108s by Libs Elliott



AW-1525-C*



AW-1525-E



AW-1525-G*



AW-1525-O*



AW-1525-P*

*Indicates fabric not used in quilt pattern.

Fabrics shown are 50% of actual size.