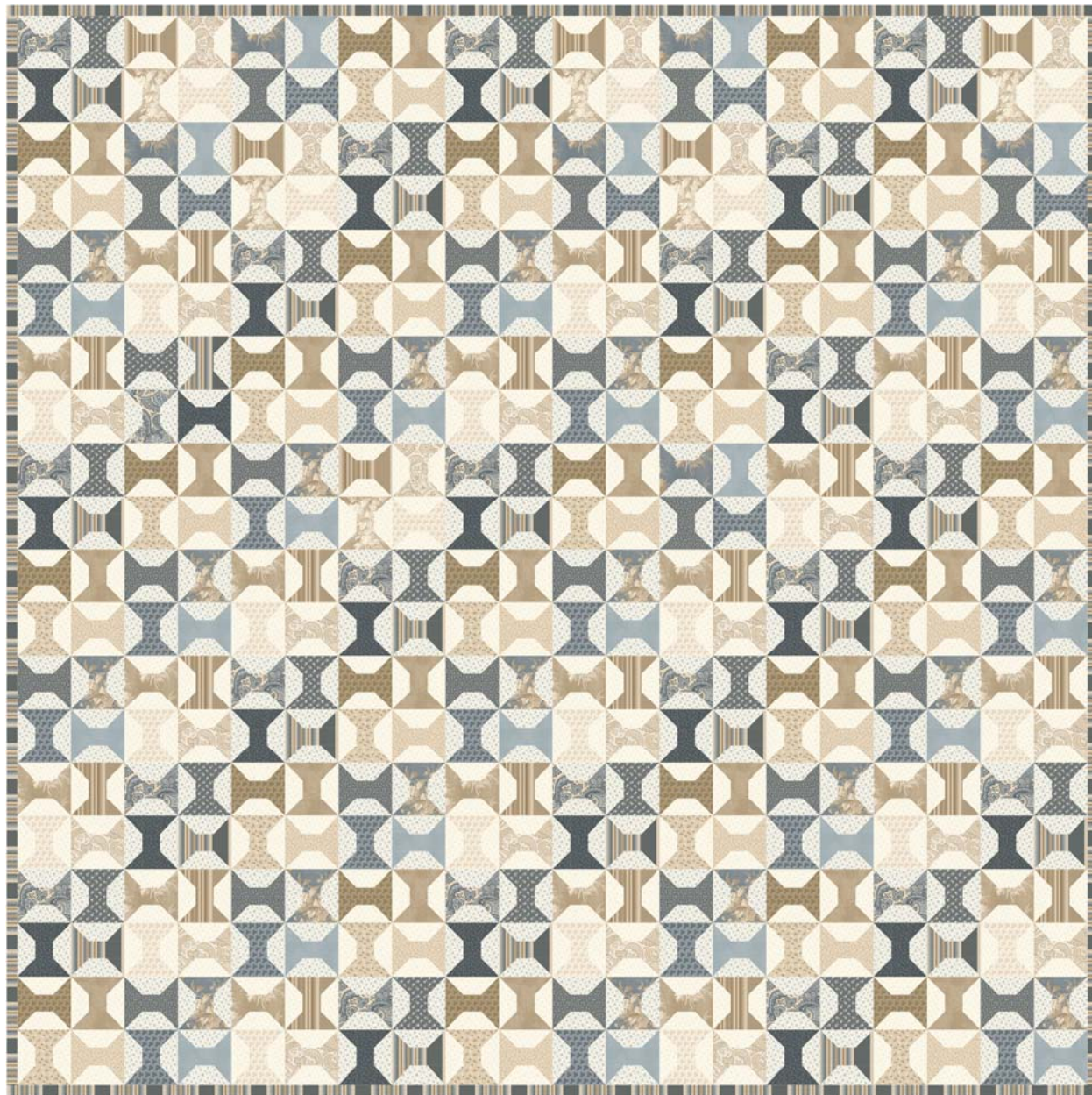


REVISED 30June25

Franklin House

Fabric and Quilt by Dolores Smith

“Twist & Turn”



Approx 100" x 100"

Twist & Turn Quilt Instruction – 100” x 100”

What I like about this block is that you can make as many as you want and size of quilt you want. Please note that the yardage below is for a 100” x 100” quilt. [If you want to make a smaller quilt, please adjust the yardage.](#)

Yardage

1 yard of (15) assorted Tan and Blue prints for Pieces B & C

541-542D Blue	541-543D Cream
541-541D Navy	541-538D Beige
541-539D Blue	541-540D Beige
541-538D Blue	541-539D Tan
541-546D Sky	541-542D Tan
541-543D Blue	541-543D Brown
541-545D Blue	541-546D Beige
	541-541D Tan

1 3/4 yard of 541-540D Blue (1 yard used for blocks & 3/4 yard for binding)

4 yards each of 2 backgrounds prints – 541-544D Blue & 541-544D Cream

Cutting Instructions for One Block – 10 1/2” x 10 1/2” Unfinished/10” x 10” Finished

Piece A – Cut (8) 2 1/4” x 5 1/2”

Piece B – Cut (16) 2 1/4” x 2 1/4” YOU WILL BE CUTTING (4) FROM FOUR DIFFERENT PRINTS

Piece C – Cut (4) 2” x 5 1/2” YOU WILL BE CUTTING (1) FROM FOUR DIFFERENT PRINTS

NOTE: When cutting Pieces B & C they need to be matching sets.

Sewing Instructions for One Block – Sew using a seam allowance of $\frac{1}{4}$ "

10" x 10" Finished

10 $\frac{1}{2}$ " x 10 $\frac{1}{2}$ " Unfinished

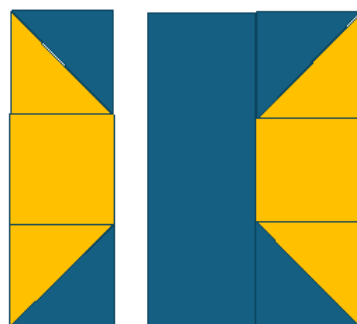
1. Draw a diagonal line on the wrong side of (4) 2 $\frac{1}{4}$ " Piece B.



2. Place a matching marked square, right side together on each end of (2) 2 $\frac{1}{4}$ " x 5 $\frac{1}{2}$ " Piece A. Sew on the drawn line. Trim $\frac{1}{4}$ " outside of the drawn line and press the seam open.



3. Sew (1) matching 2" x 5 $\frac{1}{2}$ " Piece C between (2) matching 2 $\frac{1}{4}$ " x 5 $\frac{1}{2}$ " from step 2. Repeat steps 2 – 3 three more times to make four units to complete one block.



4. Sew four units together to make one complete 10 $\frac{1}{2}$ " x 10 $\frac{1}{2}$ " unfinished block. These units can be turned different ways to form a block. Sky the limit have fun.
5. Sew the complete blocks together in rows 10 across and 10 rows down to make a quilt that is 100" x 100". See quilt for placement of blocks and rows.
6. Quilt and bind.

