

1828

GNOME-STER MASH

by jennifer pugh



Throw Quilt: 47 1/2" x 66"



www.wilmingtonprints.com

Wilmington Prints: A World of Possibilities

GNOME-STER MASH

Please read all instructions carefully AND identify all fabrics before beginning.

All instructions include a 1/4" seam allowance and strips are cut selvege to selvege, unless stated otherwise.

1. Cut the following:

If using FAT CUTS, you may need to cut additional width-of-fabric strips.

Fabric A - PLEASE NOTE: Panels do not always print the size intended. For this pattern, the panel has a coping border added then trimmed so the panel will fit the quilt correctly.

Fussy cut 1/4" beyond outside edges of panel to approximately 23-1/2" x 42"

Fabric B - Referring to the quilt image, fussy cut strips, the length of fabric parallel to selvege: (1) 5-1/2" x 63" and (1) 5-1/2" x 44" moon stripe borders. Fussy cut (1) 3" x 39" strip, (1) 3" x 5-1/2" piece, and (1) 3" square from gnome stripe.

Fabric C - Cut (1) 8" strip, subcut (3) 8" squares

Fabric D - Cut (1) 8" strip, subcut (2) 8" squares

Fabric E - Cut (6) 3" strips, sewn together end to end and cut into (2) 3" x 61-1/2" and (2) 3" x 48" borders

Fabric F - Cut (2) 3" strips, subcut (1) 3" x 39", (1) 3" x 8", and (1) 3" x 5-1/2" strips

Fabric G - Cut (1) 3" strip, subcut (1) 3" x 39" strip and (1) 3" square

Fabric H - Cut (4) 3-1/2" strips, subcut (2) 3-1/2" x 30" strips

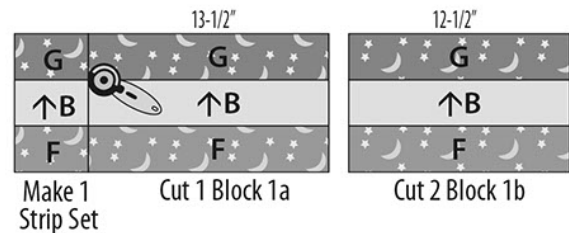
Fabric I - Cut (1) 3" strip, subcut (12) 3" squares
Cut (7) 2-1/2" strips (binding)

Fabric J - Cut (5) 1-1/2" strips, sewn together end to end and cut into (2) 1-1/2" x 59-1/2" and (2) 1-1/2" x 43" borders

Fabric K - Cut (1) 3" strip, subcut (8) 3" squares

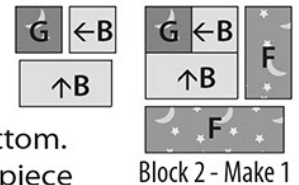
2. Piecing Order:

1. Sew the 3" x 39" **Fabric B** strip lengthwise between **Fabrics F** and **G** 3" x 39" strips as shown. From this, cut (1) 13-1/2" **Block 1a** (8" x 13-1/2" unfinished) and (2) 12-1/2" **Block 1b** (8" x 12-1/2" unfinished).



Arrows and stripes indicate orientation of directional prints.

2. Stitch **Fabrics B** and **G** 3" squares together as shown. Add **Fabric B** 3" x 5-1/2" piece to the bottom. Sew a **Fabric F** 3" x 5-1/2" piece to the right and a **Fabric F** 3" x 8" piece to the bottom to complete **Block 2** (8" square unfinished).

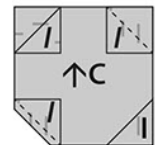


Letters in italics indicate wrong side of fabric.

3. Draw a diagonal line across all the **Fabrics I** and **K** 3" squares only as shown.

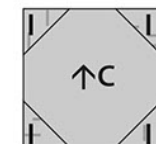


4. Arrange 4 marked **Fabric I** 3" squares on corners of a **Fabric C** 8" square as shown. Stitch along marked lines. Trim seam allowances to 1/4".



Press corners out.

Make a total of 3 **Block 3a** (8" square unfinished). In the same manner, make 2 **Block 3b**



Block 3a - Make 3



Block 3b - Make 2

with fabrics indicated.

GNOME-STER MASH

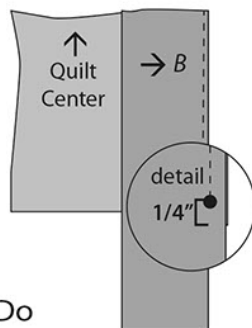
5. Refer to Quilt Layout (Page 3) for placement of panel, strips, blocks, and borders.

6. Stitch **Fabric H** 3-1/2" x width of fabric strips to sides of the **Fabric A** panel. Trim strip ends even. Add 3-1/2" x 30" **Fabric H** strips to top and bottom of panel. *Trim bordered panel to 28-1/2" x 47" (unfinished).*

7. Arrange 2 each **Blocks 1b** and **3a** and 1 **Block 3b** in a vertical row on right side of bordered panel. Stitch blocks into a row (8" x 47" unfinished) and add to right side of bordered panel.

8. Arrange 1 each **Blocks 1a, 2, 3a,** and **3b** in a horizontal row below bordered panel. Stitch blocks into a row (8" x 36" unfinished) and add to bottom of bordered panel. Quilt center measures 36" x 54-1/2" (unfinished).

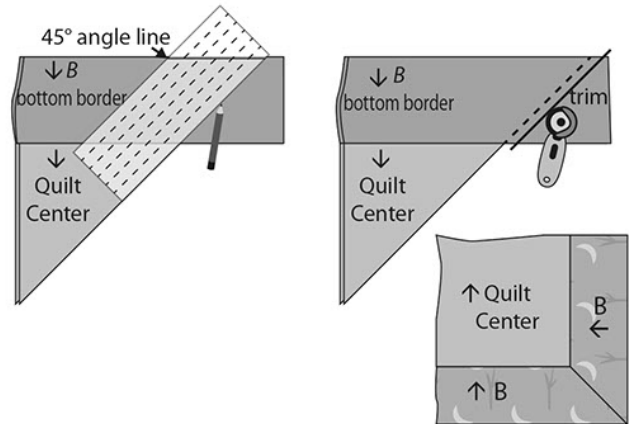
9. Pin **Fabric B** 5-1/2" x 63" border on right side of quilt center aligning top edges and placing top of border next to quilt center. Stitch border to quilt center starting at top edge and stopping 1/4" from bottom right corner of quilt center. Do not trim. Press border out.



*Letters in italics indicate wrong side of fabric.
Arrows indicate orientation of directional prints.*

10. Pin **Fabric B** 5-1/2" x 44" border on bottom of quilt center aligning left edges and placing top of border next to quilt center. Stitch border to quilt center starting at left edge and stopping 1/4" from bottom right corner of quilt center. Do not trim. Press border out.

11. Fold the quilt right sides together so the outside edges of the borders line up. Using a 45-degree ruler, mark from the end of border seams to outer edges of borders. Stitch along marked line. Trim seam allowance to 1/4". Press corner seam open.



12. Sew **Fabric J** 1-1/2" x 59-1/2" borders to right and left sides of quilt center. Add **Fabric J** 1-1/2" x 43" borders to top and bottom of quilt center.

13. Sew **Fabric E** 3" x 61-1/2" borders to right and left sides of quilt. Add **Fabric E** 3" x 48" borders to top and bottom of quilt.

14. The quilt measures approximately 48" x 66-1/2" (unfinished). Make backing (**Fabric L**) approximately 8" larger than the top.

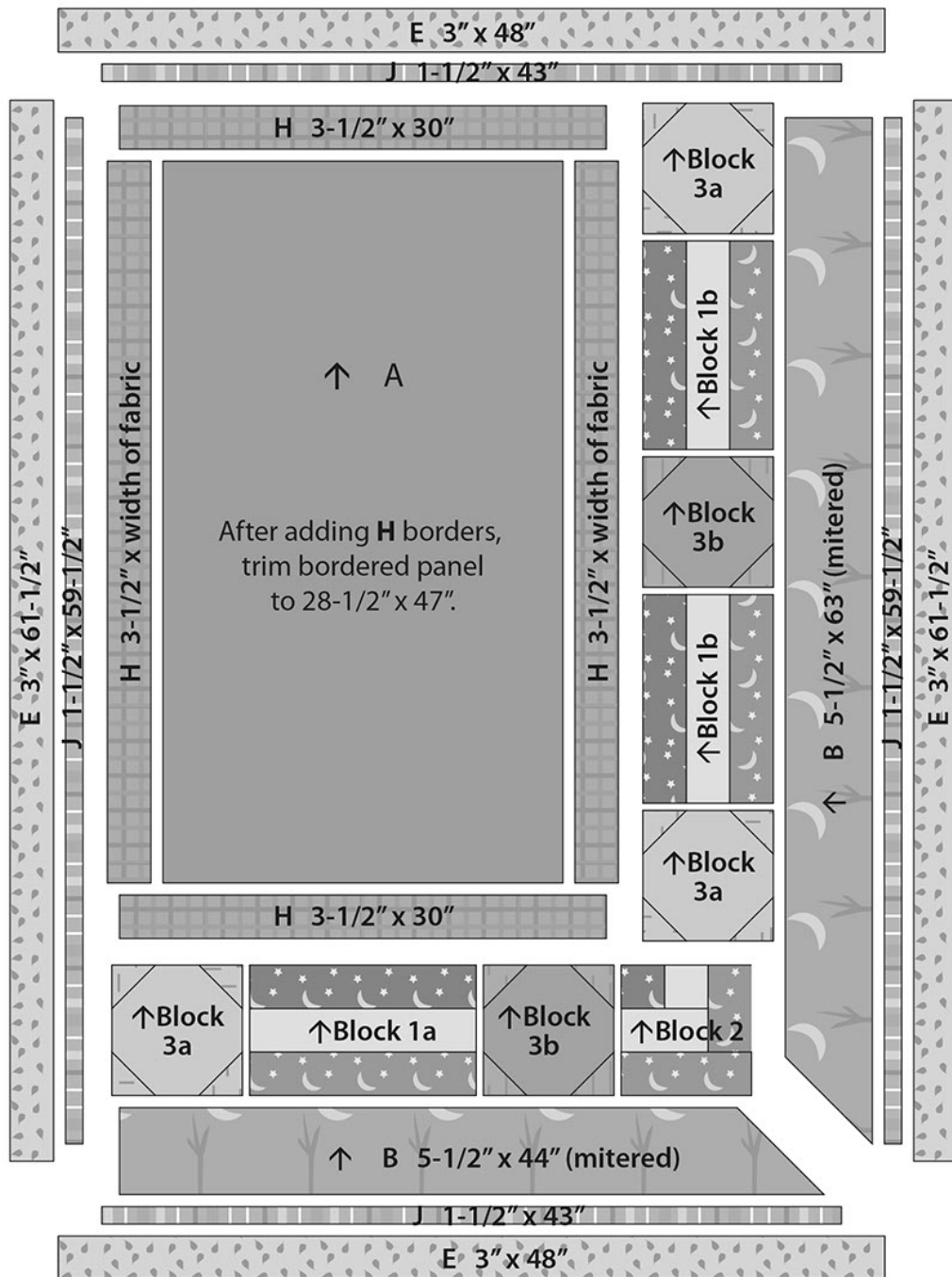
15. Layer and baste top, batting, and backing together. Quilt as desired. Attach binding (**Fabric I**) and enjoy!!

GNOME-STER MASH

QUILT LAYOUT

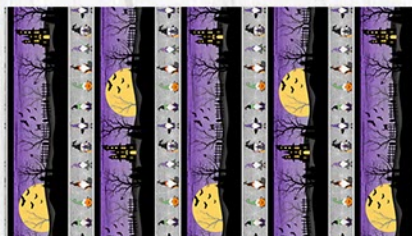
Border measurements are the cut size.

Arrows and stripes indicate orientation of directional prints.





Fabric A
1828-82647-896
2/3 yard
(1 Panel)



Fabric B
1828-82648-965
2 yards

1828 GNOME-STER MASH

by jennifer pugh



Fabric C
1828-82649-197
1/3 yard
(or Fat Quarter)



Fabric D
1828-82650-697
1/3 yard
(or Fat Eighth)



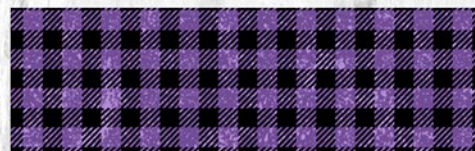
Fabric E
1828-82652-895
5/8 yard



Fabric F
1828-82653-665
1/4 yard



Fabric G
1828-82653-998
1/8 yard



Fabric H
1828-82655-669
1/2 yard



Fabric I
1828-82656-696
3/4 yard
(Incl. Binding)



Fabric J
1828-82656-797
1/3 yard



Fabric K
1828-82656-999
1/3 yard
(or Fat Eighth)

Quilters's Choice

Fabric L
Backing
44/45 - 3 1/4 yards

