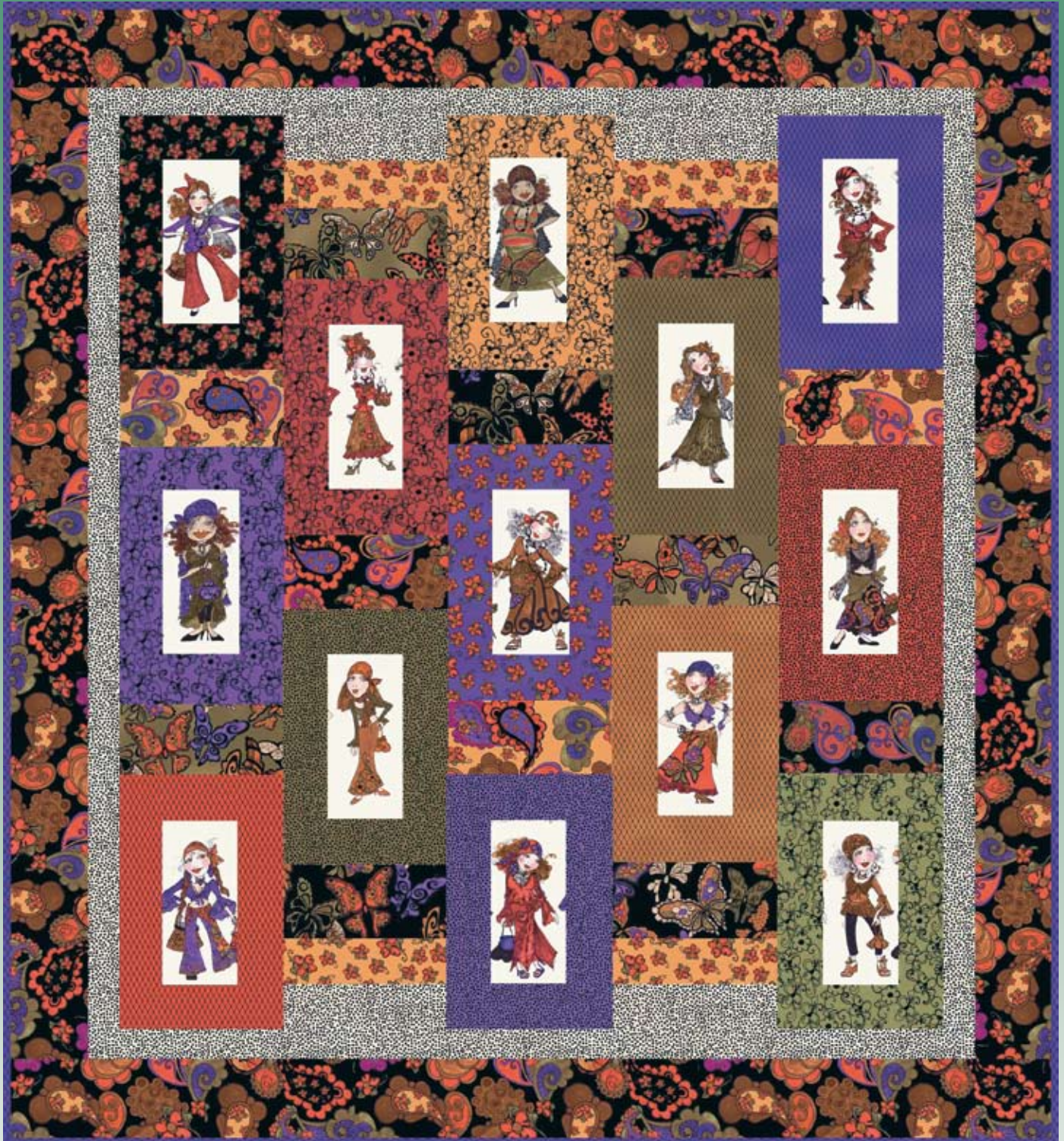


Gypsy Chique



Quilt designed by Cracker Jack Quilts for Blank Quilting

Fabric designed by **Loralie Designs**

Approximate Finished Size is 69" x 75"



TM

Gypsy Chique

Quilt designed by Cracker Jack Quilts for Blank Quilting

Approximate Finished Size is 69" x 75"

Fabric designed by Loralie Designs™

Please note that the directions for this quilt are for machine piecing and machine appliquéing. All measurements include a 1/4" seam allowance.
Please read all directions before beginning the quilt

Block size – 11" square

Fabric requirements and cutting instructions:

Panel – Two panels 5410 MULTI – FUSSY CUT, thirteen 5 1/2" x 11 1/2" LADIES.

Block Centers – One Fat Quarter of each (5412 YELLOW, 5411 BLACK, 5411 CITRON, 5412 BLACK) (4 FQs)

From each of the fat quarters cut three 5 1/2" x 11 1/2" pieces.

Block Borders – One Fat Quarter of each (5415 ROSE, 5415 CITRON, 5415 PURPLE, 5415 YELLOW, 5414 CITRON, 5415 YELLOW, 5415 ROSE, 5416 ROSE, 5416 PURPLE, 5416 CITRON, 5413 BLACK, 5413 YELLOW, 5413 PURPLE, 5414 PURPLE – 14 FQs)

From each of the fat quarters cut four 3 1/2" x 11 1/2" pieces.

Inner Border – 1 yard 5416 MUSLIN. Cut two at 3 1/2" x width of fabric, then cut four 3 1/2" x 11 1/2" pieces. Cut eight at 2 1/2" x width of fabric, save for inner border.

Outer Border – 1 1/2 yard 5412 BLACK. Cut nine at 5 1/2" x width of fabric, save for outer border.

Backing – 4 1/2 yard 5411 MUSLIN

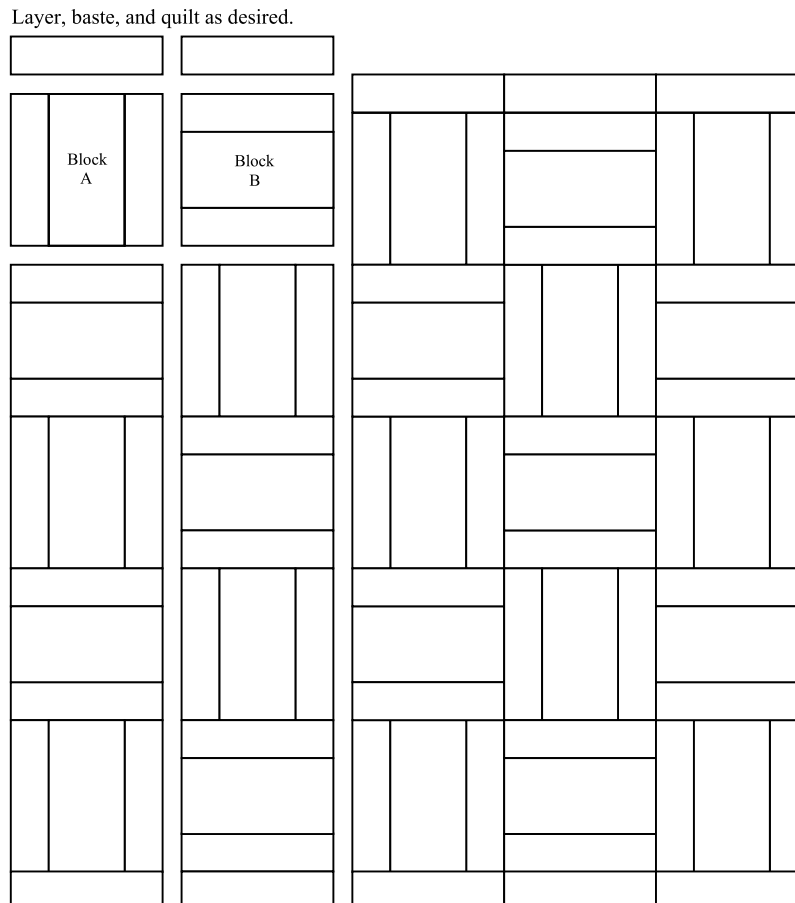
Binding – 3/4 yard 5415 PURPLE. Save for binding (as desired)

Quilt Assembly:

Quilt is assembled in 5 columns. You can follow the color picture of the quilt for fabric and color placement, or create your own pattern! The goal is to plan to have the same fabric frame each block center. Sew columns adding the extra piece to the top and bottom as shown. Sew into blocks first (Block A & Block B), then sew column together. All block "A"s have ladies in the center. After all 5 columns are made, sew columns together, matching block seams as you go.

After columns are complete and joined. Add inner border, piecing as needed. Add outer border, piecing as needed.

Layer, baste, and quilt as desired.



While all possible care has been taken to ensure the accuracy of this pattern, we are not responsible for printing errors or the way in which individual work varies.



© 2008 Blank Quilting • All rights reserved
2 Bridge Street, Suite 220, Irvington, NY 10533 • Toll Free: 1-888-442-5265 • Fax: 914-478-4278 • www.BlankQuilting.com