

HCR SERIES

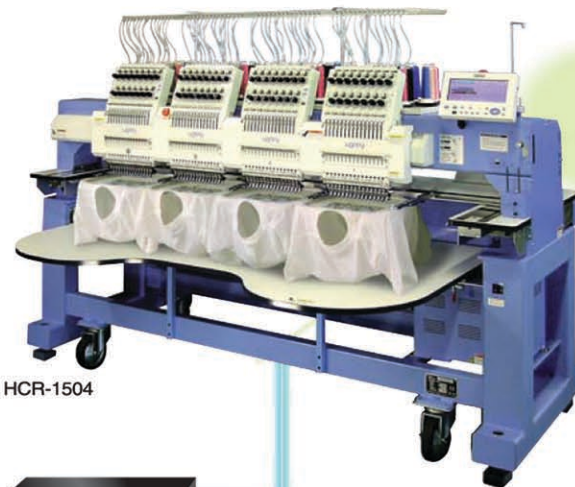
Computerized Embroidery Machine



MODEL: HCR-1506-45

HCR SERIES

MADE IN JAPAN



HCR-1504

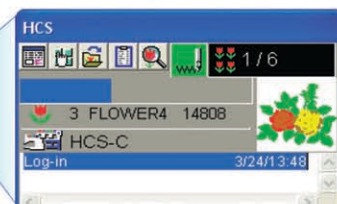


HCR-1502



HUB

Happy LAN Monitoring Window

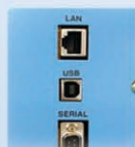


Media Compatibility



Storage Media

- Compact Flash
- SD Card
- Memory Stick
- Smart Media
- USB (Jump) Drive
- (Optional) Floppy Disk drive



PC Connection Ports

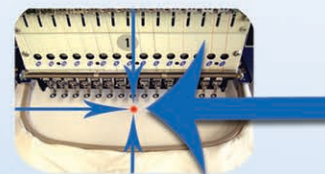
- Ethernet (LAN) Port
- USB Port
- Serial Port

Design Trace

HCR makes spotting and fitting designs into hoops easy with these key features:

Optional Laser Marker

- Displays sew point on the garment for accurate trace
- Spot actual sewing location on garment with confidence



HAPPY HCR Machines are Office-Friendly

While HAPPY HCR Multi-head machines are built for big production and high durability, they're were also designed to be easy to work with:

- New color control panel with built-in help makes the machine easy to learn, and simplifies operations and maintenance
- Quieter, smoother operation - the quietest HAPPY multi-head line ever
- Compact design allows even the largest model HCR to be wheeled easily through a standard 3' door. More flexibility for your shop!

Narrow Cylinder Arm



FREE communication software included!

HAPPYLINK: Design transfer/management software for direct connection to PC via USB or serial.

HAPPYLAN: Allows you to control a network of HAPPY machines (of mixed types) at the same time



HCR-1506



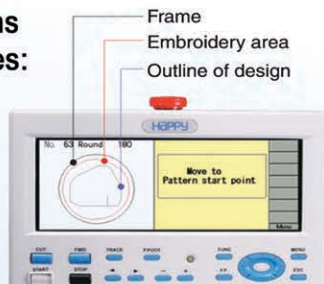
HCD-1501

Memory Capacity

Built-in memory capacity of 2,000,000 stitches or up to 250 multi-color designs and their custom settings

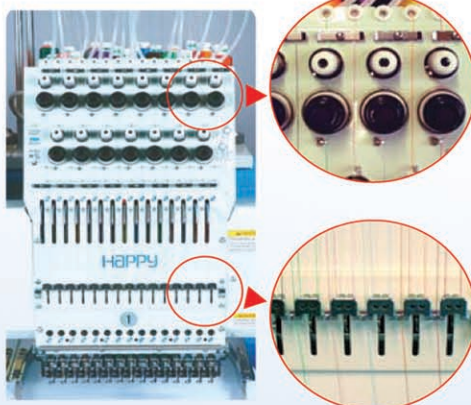
New Thread Control System

signs
ures:



Frame Selection Menu

- Choose a hoop on-screen
- Accurately check/adjust design fit and position in the selected hoop



The thread break sensor and the thread tension control unit are combined, improving upper thread feed and tension control.

Independent take-up springs improve overall sewing quality

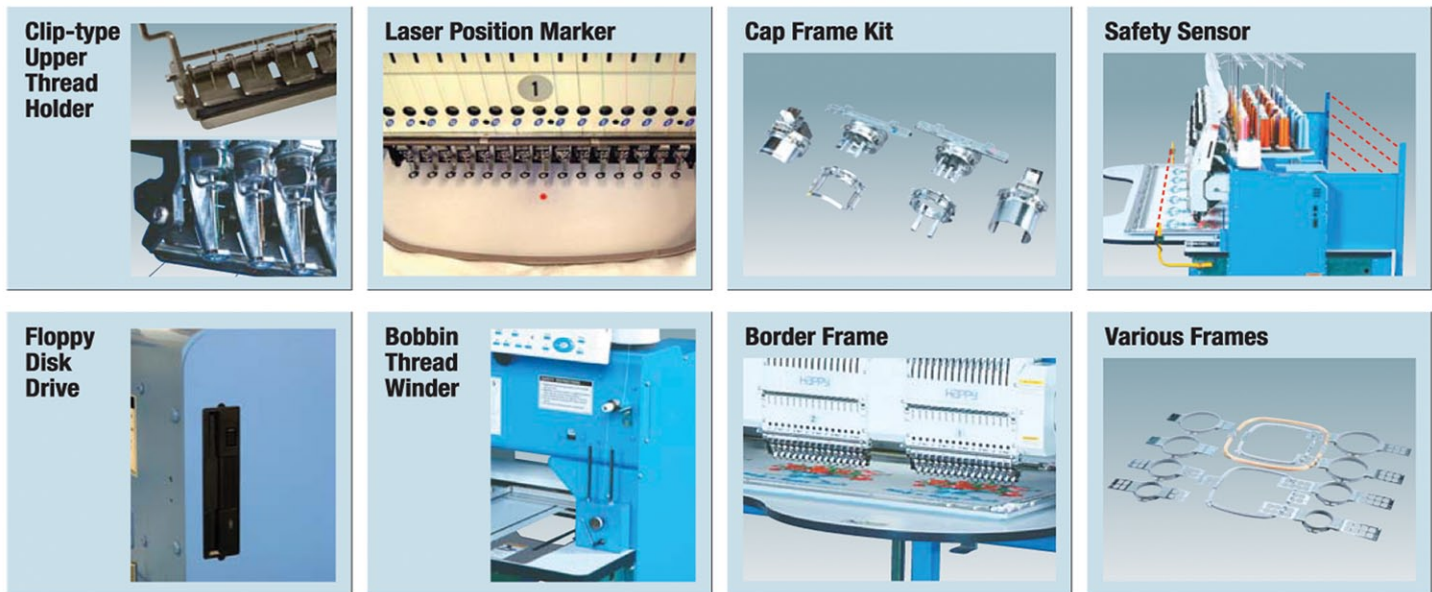
Control panel settings allow the machine to better handle different types of thread sewing together on the same design i.e. metallic + polyester, or other combinations.

Standard Features & Functions

- On-Board Help Feature
- WIDE (9inch) Color LCD Monitor
- HAPPY LINK Software
- HAPPY LAN Software (networking)
- Automatic Color Change
- Compatible with Many Types of Storage Media
- Make Design Adjustments On-The-Spot: flip/rotate, auto-repeat, fine-scaling, offset from center, and more
- Improve sewing quality of existing designs with design cleanup/compensation tools
- Improved production power: higher speed operation, fast color change

Reduced diameter of cylinder arm improves the ability to embroider on traditionally tight areas such as pockets, sleeves, pant legs, children's wear and more.

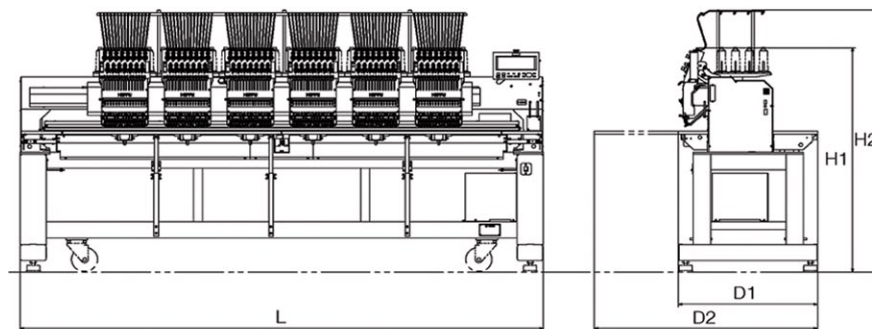
Options



HCR Series Specifications

| Model | Head | Needles | Needle Distance (mm) | Embroidery Area per Head (DxW : mm) | | | | Maximum Speed (r.p.m.) | |
|-----------|------|---------|----------------------|-------------------------------------|---------------|----------------|-----------------------|------------------------|-----|
| | | | | Normal | Tubular Frame | Wide Cap Frame | Low-profile Cap Frame | Normal Tubular | Cap |
| HCR-1502 | 2 | 15 | 500 | 450x500 | 440x420 | 80x350 | 70x180 | 1,100 | 850 |
| HCR-1504 | 4 | | 360 | 450x360 | 320x320 | | | 1,000 | |
| HCR-X1504 | 4 | | 500 | 450x500 | 440x420 | | | | 800 |
| HCR-1506 | 6 | | 360 | 450x360 | 320x320 | | | | |
| HCR-X1506 | 6 | | 500 | 450x500 | 440x420 | | | | 750 |
| HCR-1508 | 8 | | 360 | 450x360 | 320x320 | | | | |

| Model | Stitch Length (mm) | Memory | Power Supply | Power Consumption | Frequency | Weight (kg) Net/Gross | Dimentions (mm) | | | | | | | | | |
|-----------|-----------------------|--|-----------------------------|----------------------|-----------|--------------------------|-----------------|-----|-------|-------|-------|--|--|--|--|--|
| | | | | | | | L | D1 | D2 | H1 | H2 | | | | | |
| HCR-1502 | 0.1~12.7 | 2,000,000 stitches 250 patterns | Single Phase 200~240V | 0.7kw | 50/60Hz | 610/800 | 1,890 | 800 | 1,285 | 1,340 | 1,580 | | | | | |
| HCR-1504 | | | | 0.8kw | | 640/830 | 2,280 | | | | | | | | | |
| HCR-X1504 | | | | 1.0kw | | 890/1,140 | 3,000 | | | | | | | | | |
| HCR-1506 | | | | | | 930/1,200 | 3,980 | | | | | | | | | |
| HCR-X1506 | | | | | | 960/1,300 | | | | | | | | | | |
| HCR-1508 | | | | 1.2kw | | 1,030/1,350 | | | | | | | | | | |



* Effective embroidery area, max sewing speed and other machine performance may vary depending on hoop type, design file and other conditions.
* Any information represented on this document may be subject to change without notice.

for more information, contact:



The Complete Solutions Provider for your Embroidery Equipment Needs

website www.happyemb.com • toll-free 877.335.5206

Headquarters 3001 Stafford Drive
Charlotte, North Carolina 28208
direct 704.394.0314
fax 704.392.1621