



COOPER'S CHRISTMAS STOCKING

KT STASH SOCIETY BONUS PROJECT

FEATURING KANSAS WINTER
BY KANSAS TROUBLES QUILTERS

KTSS - DISC #3



COOPER'S STOCKING

14" x 25" LINED STOCKING

PIECED & QUILTED BY LOIS SPRECKER

WHAT LITTLE KID WOULDN'T LOVE A SUPER-SIZED STOCKING TO HOLD ALL THE GOODIES SANTA WILL BRING? EMBROIDER A NAME ON THE CUFF OR TIE A PERSONALIZED TAG ON THE LOOP FOR EASY IDENTIFICATION.

SUPPLIES

BLACK PRINT	background of front, back of stocking	¾ yd.
TAN	checkerboard border, flying geese, stripes	6" x 22"
RED #1	checkerboard border, flying geese	6" x 22"
Red #2	flying geese, stripe	3" x 22"
GREEN #1	flying geese, stripes, cuff	fat ¼
GREEN #2	lining	¾ yd.
GOLD	flying geese, stripes	6" x 22"
COTTON THREAD	piecing & quilting - black	

CUTTING

BLACK	stocking back - (1R) stocking template stocking front - (1) 5" x 14 ½" (1) 3" x 18 ½" (1) 4 ½" sq. stripes - (1) 4 ½" x 14 ½" (1) 1 ½" x 14 ½" flying geese - (14) 2 ½" sq. binding - (1) 2 ½" x WOF strip loop - (1) 2" x 7"
TAN	checkerboard - (1) 1 ¼" x 22" flying geese - (1) 2 ½" x 4 ½" stripes - (1) 1 ½" x 14 ½"
RED #1	flying geese - (1) 2 ½" x 4 ½" checkerboard - (1) 1 ¼" x 22"
RED #2	flying geese - (1) 2 ½" x 4 ½" stripes - (1) 1 ½" x 14 ½"
GREEN #1	cuff - (2) 4 ½" x 10 ½" flying geese - (2) 2 ½" x 4 ½" stripes - (1) 2 ½" x 14 ½"
GREEN #2	lining - (1+1R) stocking template
GOLD	flying geese - (2) 2 ½" x 4 ½" stripes - (1) 2 ½" x 14 ½"



TOP OF STOCKING
PART I

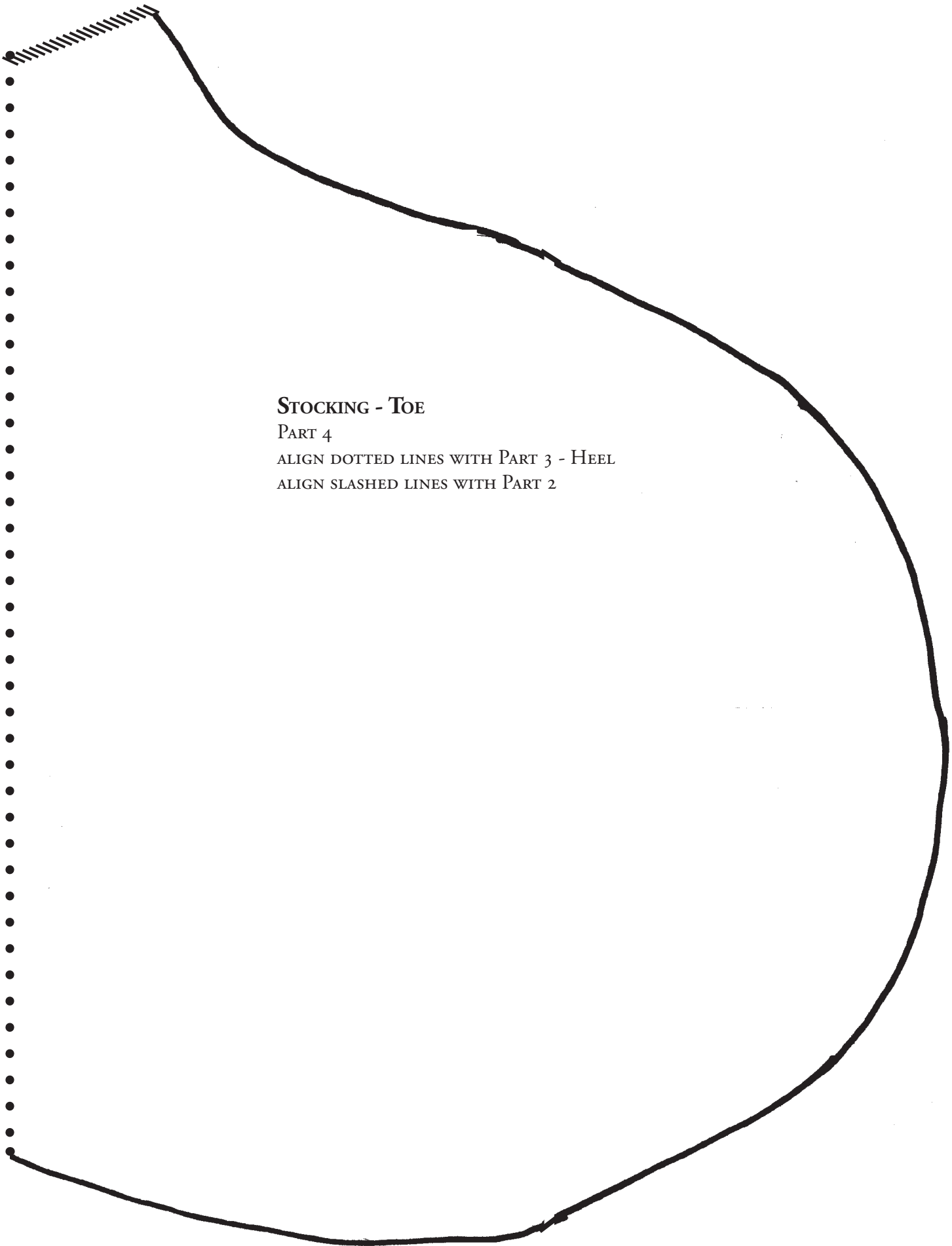


STOCKING - HEEL

PART 3

ALIGN SLASHED LINES WITH PART 2

ALIGN DOTTED LINES WITH PART 4 -TOE



STOCKING - TOE

PART 4

ALIGN DOTTED LINES WITH PART 3 - HEEL

ALIGN SLASHED LINES WITH PART 2



STOCKING TOP

PART 2

ALIGN DASHED LINES WITH PART 1

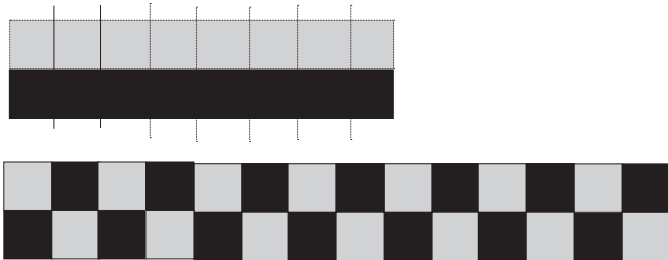
ALIGN SLASHED LINES WITH PART 3

ASSEMBLY

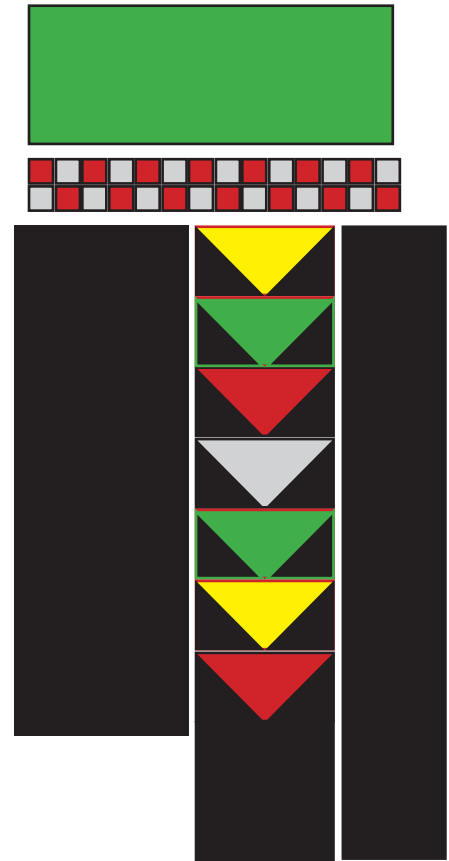
FLYING GEESE - Piece (7) flying geese using assorted red, green, tan & gold 2 ½" x 4 ½" rectangles and black 2 ½" squares. Mark a chalk line diagonally on each black square. Lay a black square on one end of the each rectangle right sides together and matching corners as shown. Stitch on drawn line; trim triangles to ¼" seam allowance. Press black triangle toward corner. Repeat for opposite end of rectangles. Make a total of (7) assorted flying geese. Sew blocks together in a vertical row; press. Add the black 4 ½" sq. to the bottom of the flying geese strip; press toward black. Sew the 5" x 14 ½" black strip on the left side of the flying geese section, even at the top and the 3" x 18 ½" strip on the right side; press toward black.



CHECKERBOARD BORDER - Sew the red and tan 1 ¼" strips together in pairs; press toward red. Crosscut into 1 ¼" units. Sew (14) units together in a row to make checkerboard border; press.



Stitch **GREEN CUFF** to top of checkerboard border; press toward cuff. Center and sew checkerboard border/cuff to top of flying geese section; press toward flying geese.



STRIPS - Sew the red, green, black, tan & gold strips together in any order desired; press. Add to lower left side of flying geese section at a 45° angle, as shown on previous page (about ½" away from edge of bottom flying geese). Press toward stripes.

QUILTING - Lay stocking template on pieced stocking front; trim. Layer stocking front with batting; pin. Machine quilt-in-the-ditch around flying geese, stripes and on each side of checkerboard trim; quilt diagonally thru red checkerboard squares; stitch straight lines about 1 ½" apart in cuff using checkerboard squares as a guide (every other one). Trim batting.

PUTTING IT ALL TOGETHER - Sew quilted stocking front and black stocking back, right sides together using a ¼" seam allowance. Clip curves and turn right side out. Sew green stocking lining with right sides together using a ½" seam allowance; clip curves. Slip green lining into stocking with wrong sides together. Check that top openings are the same width; adjust seams in lining, if needed. Stitch 2 ½" black binding around top of stocking, starting and stopping at top center back. Make a loop for hanging by pressing ½" on each side of 2" x 7" strip toward the center; fold in half and stitch close to folded edges with black cotton thread. Position loop on inside of binding at back of stocking; pin in place. Catch and secure loop as you whipstitch the binding on the top of the stocking.

103 N. Nelson, PO Box 278
785-488-2120

KANSAS TROUBLES QUILTERS

ktquilts.com

Bennington, Kansas 67422
ktquilts@twinvalley.net