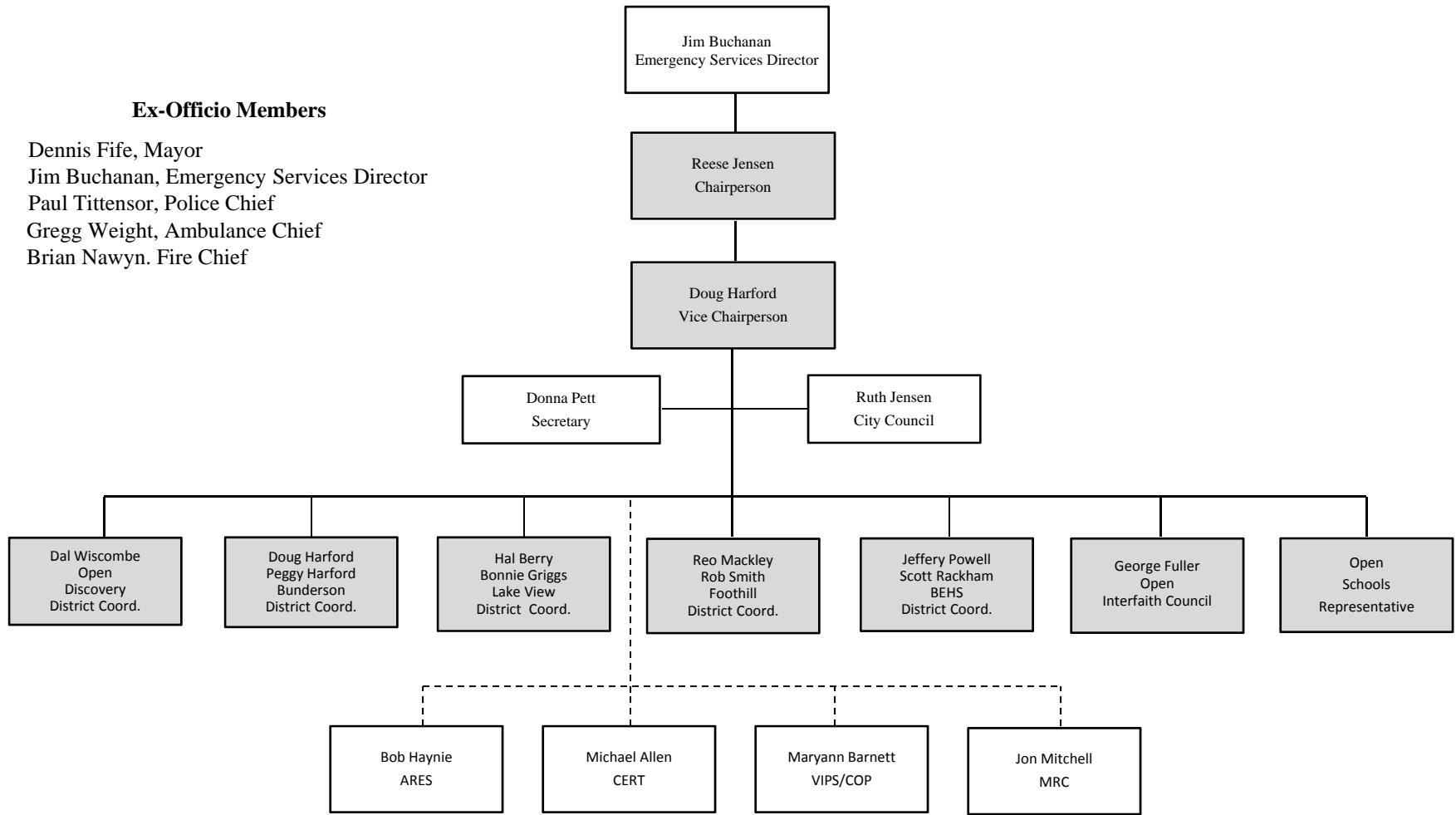


# Citizen Corp Council Organization Chart



**Ex-Officio Members**

- Dennis Fife, Mayor
- Jim Buchanan, Emergency Services Director
- Paul Tittensor, Police Chief
- Gregg Weight, Ambulance Chief
- Brian Nawyn, Fire Chief

Executive Board

### **Attributes of the new structure**

- Churches & schools become an intricate part of the solution.
- Uses the organization and geographical boundaries of the churches to facilitate the city emergency preparedness objectives.
- Divides the City into 5 districts congruent with stake boundaries.
- Creates a structure that promotes collaboration and cooperation between churches, schools & City.
- Districts will recommend district coordinators.
- Makes district coordinators part of the Executive Board.
- Defines and simplifies the lines of communication.
- Creates a forum for sharing ideas / initiatives between districts & other cities.
- Puts emphasis on the city being viewed as a resource to the churches & schools.