

Inspira Quilt Frame and Mega Quilter FAQ's

Mega Quilter:

What is the Mega Quilter?

The Husqvarna Viking Mega Quilter is a semi-industrial sewing machine designed for the home sewer and quilter and the "cottage industry" sewer and quilter. You will love the industrial features: Sew up to 1600 stitches a minute, twice the speed of your standard sewing machine. The extra wide arm means it quilts even the largest quilt, you choose the method!

- Use the Inspira Quilting Frame and with the optional Cruise Control Stitch Regulator
- Free motion with the 18" x 24" extension table
- With the dual feed using the huge 18" x 24" extension table

Accessories are available for specialty sewing techniques. All these industrial features plus the timesaving ease of operation features home sewers love: automatic thread cutter, needle stop up or down, electronic adjustable speed control, large reverse lever, knee lift and more!

What kind of sewer is it good for?

Quilters, home dec sewers, fashion and craft sewers love the ease, speed, and precision of the Husqvarna Viking Mega Quilter.

What Accessories are available for it?

Leather Foot #416 04 81 01

Ultraglide coating permits easy sewing of fabrics that might otherwise stick to metal foot -- Ultrasuede, vinyl, man-made leather.

Silk Foot #416 04 83 01

Maximum hold for sewing on light weight, slippery fabrics.

Rolled Hem Foot #416 04 85 01

For sewing rolled hem on light to medium weight fabrics

Zipper Foot #416 04 82 01

For sewing close to welting and piping and inserting zippers.

Walking Foot/Even Feed #416 04 84 01

Helps prevent layers of fabric from shifting and slipping. Great for matching plaids.

Velvet Foot #416 04 86 01

For sewing velvet and densely napped fabrics. Use Feed Teeth Cover and move the two layers of velvet manually through the machine.

Go to www.husqvarnaviking.com, Education, Tips and Hints for illustrated instructions on using the different accessory feet.

Do I have to use the Mega Quilter on the Inspira Frame?

No, you can use the Mega Quilter on any sturdy table or on the frame.

My machine isn't stitching right. The thread breaks and there are big loops.

Why?

Any time you are having problems, there are several steps to follow:

- Re-thread the machine, top and bobbin
- Make sure the presser foot is down
- Clean and oil the machine
- Put in a new needle and be sure it inserted all the way up, and that the flat side of the needle is to the right, as you are looking at the front of the machine.
- Test sew on a scrap, of the same fabrics as your quilt, and adjust the tension as needed.

I don't understand what the numbers on the tension mean. What are they lining up with?

As shown in the photo, where the black part ends and the white edge of the dial starts indicates the tension number. In the photo, the tension is set at 3 1/2.



What kind of needle do I use in my Mega Quilter?

Your Mega Quilter takes the Schmetz HLX5 needles. They are available in sizes 75, 90 and 100. This is an industrial needle strong enough for the high speed of the Mega Quilter.

When I use some threads, like invisible thread, the thread twists when it is pulled straight up off the spool. On my regular machine, I always stand the spool up so that it unwinds as the thread is pulled from it. Is there a way to do this on my Mega Quilter?

Try placing the spool on the spool pin, raised by putting the cap underneath it like a bowl and bringing the telescoping thread guide to a low enough position, next to the spool, as shown in the photograph, so that the thread is unwinding, rather than being pulled straight up.



How often do I have to change the needle?

The needle on your Mega Quilter needs to be changed on a regular basis. A good rule to follow is every 3 to 5 hours of sewing, which is probably after every quilt is finished.

What is the work area in the Mega Quilter?

The actual area from the needle to the edge of the machine is approximately 9".

I have trouble hanging on to the bobbin case to get it in the machine. Is there an easier way?

Yes, open the latch, and hold it between your index and third finger, but on top of your hand as shown in the photograph. That way you don't have to get your whole hand in, just your fingers. (see photo)



Why don't the feed teeth drop?

On high speed machines, it is better for the feed teeth to be covered, instead of dropping. There is more accuracy in the feed when they are stationary. The cover is advantageous when quilting because the slight raised area puts a slight pressure on the quilt maintaining a taut environment and protects the standard needle plate from nicks.

My Mega Quilter is very noisy and doesn't run smooth. Why?

The Mega Quilter is a semi industrial machine and needs to be oiled on a regular basis. There are a number of oiling points and they are shown in detail in your Users Guide. You may need to oil it several times in an eight hour day of quilting. Oil evaporates, so even if you oiled your machine two weeks ago but haven't used it, it may need oiling again, especially in the hook area. As you use your machine more, you will be able to tell by the sound when it needs oil

Inspira Quilting Frame:

Can I use other machines on the Inspira Quilting Frame?

The Inspira Quilting frame was designed for the Mega Quilter and we can't guarantee that other machines will fit or work properly.

How big is the Inspira Quilting Frame?

The Inspira Quilting Frame is 10 feet (120") long outside measurement. This does NOT mean you can quilt 120".

How wide of a quilt can you quilt?

You can quilt up to approximately 100" in width.

How long of a quilt can you quilt?

This depends on the thickness of the batting but you should be able to quilt up to 106" in length when using a thinner batting. If you cannot quilt to the end, you can turn the quilt, and quilt in from the other end.

Do I have to set it up the full width of 10 feet?

No, you can set it up for 5 feet (60") if you have a smaller area and/or quilt smaller quilts.

How much leader fabric do I need? I don't have enough to go all the way across the frame.

You don't want your leaders to go all the way across the frame. You need to pick a "home base" at one end of the frame and leave approximately 10" without leader fabric so that you can get to your machine easily to change the bobbin, re-thread the needle etc.

What is the center? Is it the center of the frame or the center of the leaders?

The centers of the leaders need to be marked with a permanent marker. This is where you will center the quilt, not on the center of the frame. Because the leaders are offset to one side, the centers is offset on the frame.

Do I have to finish off the raw edges of the leader fabric?

It is a good idea for you to serge, or turn under and straight stitch the edges of the leader fabric. They will hold up over time much better if they are finished.

Is it better to use straight pins or safety pins to pin the quilt to the leader cloth?

It is a matter of opinion. Some people prefer safety pins but most experts use straight pins. The large head quilting pins are best.

How close together do the pins have to be?

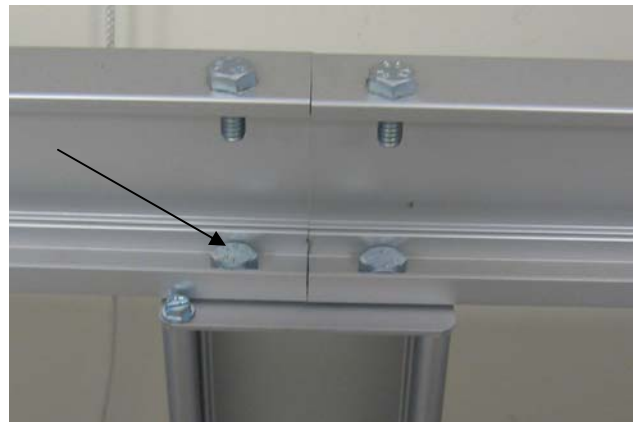
They should be almost touching so that there is not enough fabric between them to cause a gap, as the quilt is stretched by the rollers.

I have trouble seeing underneath the quilt to check the tension. Is there anything to make it easier?

Yes, use a hand mirror to easily check the underside of your quilt while it is on the frame.

My machine is not running smoothly on the frame. What can I do?

- There are several things that can effect the movement of the frame. One is the height of your quilt. This is adjusted by the height of the rollers and if the rollers aren't at the same height, or are too high or too low, they can effect the movement of the machine. The quilt should be just skimming the bed of the machine. J Adjust the height of the fabric roller bars as needed.
- The way the machine is set on the carriage platform can effect the movement. It needs to be centered on the carriage.
- The frame has to be level. Level the frame with the machine on the carriage. The legs of the frame have levelers at the bottom.
- Be sure the frame is square. Use a metal carpenters square to square it up.
- Be sure the frame was assembled correctly and the bolts are tight. Especially the ones on the inside of the rail that the carriage rides over. If they stick up at all, the carriage/machine will "hang up" on them. (see photo)



I am experiencing a lot of vibration when using the Mega Quilter on the Inspira Quilt frame. How can I fix that?

There are a number of different things that can cause vibration:

- Frame not level.
- Frame not square, out of kilter.
- Machine needs oil
- Frame not assembled correctly
- Machine not centered properly on the carriage.

How do I level the machine?

Screw the screws on the bottom of the legs all the way up. Place a level on the frame. Check it at both ends and on both front and back. Screw the feet down as needed to level the frame.

Are the screws on the bottom of the frame to adjust the height? I can't get it high enough.

The screws on the bottom are to level the frame, not to make it higher or lower.

How do I load the fabric onto the frame?

A DVD on loading the fabric and getting started is included with the Inspira Quilt Frame. Cheryl Barnes and Sue Hausmann show everything you need to get going, quilting!

Can the quilting frame be set up against the wall?

You can have the frame against the wall, or out from the wall. Many quilters like to be able to get to both sides when pinning the quilt to the leaders so it is nice, if it is away from the wall.

Do I have to stand up when I quilt?

No, you can sit on a stool if you would like to. Many people remove the batting bar to be able to sit up to the frame, and let the batting pool on the floor. Some sit on a rolling chair to "roll along" the quilt.

The laser light is very large and I find it hard to follow the pattern. Can I make it smaller?

Yes, put a small piece of blue painters tape over the end with a small hole poked in it. That way you can make the size of the laser point whatever size you want.

What is the shelf for?

The shelf is for your Pantograph pattern ONLY. It is not for any extra parts or pieces. The shelf won't support the weight, and the things on the shelf could fall onto your machine or quilt as you are quilting.

My thread breaks when I have my Mega Quilter on the Frame, but not when it is on the table. How come?

The way the quilt is loaded usually is responsible for the thread breakage. Basic check list for thread breakage is:

- Put in a new needle and be sure the needle is the appropriate size for the thread. If the needle eye is too small, it will cause the thread to break.
- Try a different spool and/or type of thread. You can have bad thread, even a brand new spool!
- Check the height of the quilt. The quilt needs to be sitting flat on the bed of the machine. The roller height may need to be adjusted to achieve this. If the quilt is sitting above the bed of the machine, it "bounces" as the stitch is being formed, and thread breakage will occur. If the thread is not breaking when the machine is off the frame, this is most likely the cause.
- Check the thread tension and be sure it isn't too tight.
- Check to be sure the machine is threaded properly.

Quilter's Cruise Control:

What is the Quilters Cruise Control?

The Quilter's Cruise Control ® is a stitch length regulator for use on the Inspira Quilting Frame with the Mega Quilter. It plugs directly into your Mega Quilter foot control port. It uses optical encoders mounted to your quilting frame to actively change the speed of the sewing machine as you move it to help maintain uniform stitch length throughout your quilting project.

Can I use the Quilter's Cruise Control on my Mega Quilter while it is sitting on a table and not on the frame?

No, the Quilters Cruise Control reads the movement of the machine on the frame so it will not work when your machine is not on the frame.

What is the warranty on the Quilter's Cruise Control?

The warranty is 12 months parts/12 months labor

Can I free motion quilt with the Quilter's Cruise Control or just follow pantograms?

You can do both free motion quilting or following pantograms.

Where should I set my machine's speed and stitch length if I am using the Quilter's Cruise Control?

It should be set at medium speed, in the middle of the speed slide area. The stitch length should be at 2 1/2.

Quilting FAQ's

I have a space of about 6" between the border and the remainder of the quilt that I didn't quilt in. When I took the quilt off the frame, that 6" was "bubbly" on the back. How can I prevent that?

When you have an area that isn't quilted, as you roll it on the frame, the quilt top is rolled up less than the batting and backing. You might think of it like the "turn of the cloth". Some fabric is taken up in the turn. The way to prevent the bubbles is to baste that area as you come to it, and after the quilt is removed from the frame, remove the basting. If you use water soluble thread for the basting, you don't even have to remove it! Just spritz with water.

Should I attach the clips to all the layers at once?

The clips should only be attached to the backing and batting. The top of the quilt should float freely on top

I love using the Golden Threads quilting paper but it takes so long to remove. Is there an easy way?

Try "sucking" off the paper with a shop vac and cleaning up any "whiskers" with a lint roller.