

BERNINA⁺

My **BERNINA**
Sewing Machine
Workbook 3



Creative Options

For all current BERNINA 8 Series and
artista 640 and 730 models

Setup Program	3
Stitch Collage	5
Long Stitch	6
Tapering Stitches	7
Multi-Directional Stitching	8
Free-Form Directional Stitching	9
All-Over Directional Stitching: Twisted Scrolls (BERNINA 830 only)	10
All-Over Directional Stitching: Trailing Tulip Vines (artista 730 only)	11
All-Over Directional Stitching: Trailing Tulip Vines (BERNINA 830 only)	12
Monograms	13
artista 640 Functions	14
artista 730 Functions	15
BERNINA 820 Functions	16
BERNINA 830 Functions	17
Machine Features and Functions Chart	18
Presser Foot Chart	19



Welcome to your third and final sewing machine class in the My BERNINA series. By now, you are familiar with the basics of operating your machine and are ready to get into some of the unique features and functions that made you want your model in the first place. The information and stitching exercises in this book address the special techniques you can sew with the artista 640 and 730 as well as the 8 Series models, 820 and 830.

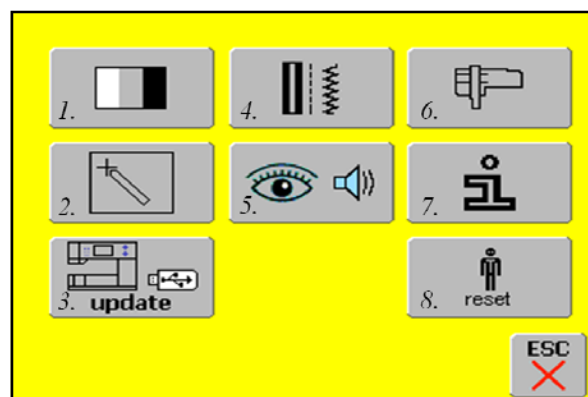


The Setup Program allows personalization of your sewing system to reflect your sewing style, needs, and preferences. To access, press the external Setup button.



8 Series Selection Menu

1. Display (screen) settings
2. Sewing settings
3. Embroidery settings
4. Display (screen) calibration
5. Monitoring settings
6. Information
7. Update sewing computer
8. Cleaning the sewing/embroidery computer
9. Reset basic settings



artista Selection Menu

1. Display (screen) settings
2. Sewing settings
3. Embroidery settings
4. Display (screen) calibration
5. Monitoring settings
6. Information
7. Update sewing computer
8. Reset basic settings

Display - Brightness - Display - Contrast

Adjust the appearance of the screen for the lighting conditions in your sewing area.

Display - Welcome Text

Change the initial on-screen greeting.

Sewing Setting - Sewing Light

Turn sewing light off/on.

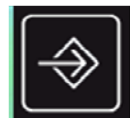
Sewing Settings - Motor Speed

Adjust the overall sewing speed. Note: the artista has a separate motor speed screen for embroidery; to access, touch the Embroidery Settings symbol.

SEW-HOW

Do you know how to:

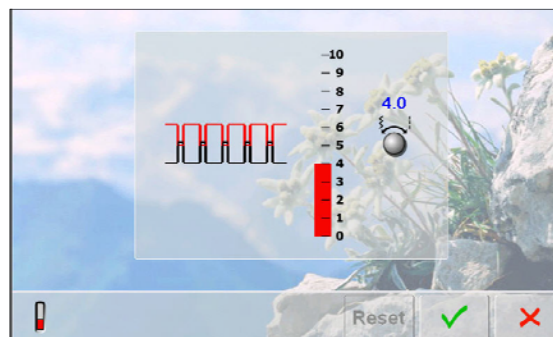
- Make your screen easier to see?
- Turn the sewing light off and on?
- Adjust the overall motor speed?



Sewing Settings - Thread Tension

Adjust the overall tension setting of your sewing system.

Note: The tension of BERNINA sewing machines is set at the factory for the best “all around” results using Mettler Polyester Metrosene thread in the needle & bobbin. If you regularly use other types of thread, you may find it useful to adjust your tension settings using the Thread Tension Adjustment in the Setup Screen.



Customize Favorite Function

Assign the function of your choice to the Favorite Function button.

Touch - Calibrate

Calibrate the touch screen of your sewing system to optimize the sensitivity of the screen.

Software - Language

Access information on the software version installed in your sewing machine & embroidery module.

Messages and Audio Signals

Turn audio signals off/on

Choose from a range of signals for each function:

- Select Stitch
- Select Function
- Upper Thread Control
- Lower Thread Control
- Feed Dog Position
- Presser Foot Position
- Bobbin Winder
- Embroidery Finished
- Thread Cutters
- Threader

Return to Basic Settings

Returns all settings—sewing and/or embroidery—to the original factory settings.

esc and Leave Setup

Closes the Setup Screen without making changes.

Returns to previously selected screen.

SEW-HOW

Do you know how to:

- Choose the signals you want for various functions?
- Return to default settings?

(stitches shown below)

Fabric: Firm woven fabric, 4" x 6" and
Heavyweight tear-away stabilizer, 4" x 6"
Needle: 80/12 Universal
Thread: 30 wt. cotton embroidery
Needle Position: center
BERNINA Presser Foot: Open Embroidery Foot #20/20C/20D

The artista models are equipped with one Personal Program; the 820 has two and the 830 has four. Use these menus to store your favorite stitches, most often used stitches, or a group of stitches needed for a particular technique or project.

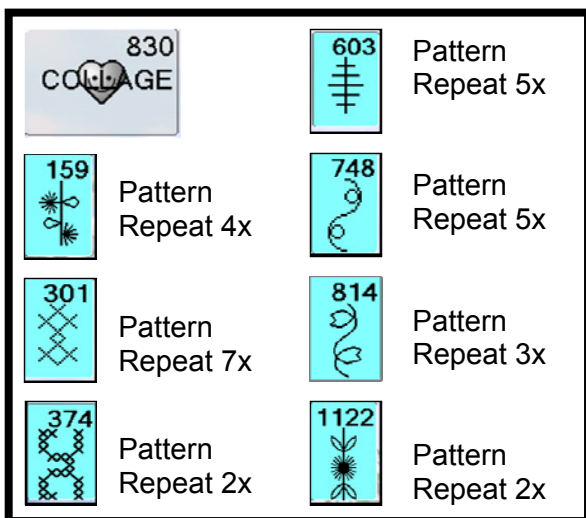
Creating a Personal Program

- Select the desired stitch
- Make any desired altered settings
- Touch the Stitch Altering Area
- Select Add to Personal Program

Note: When creating a new folder in the BERNINA 820 or 830, you will select the desired folder, type a name, and select Check. Touch the stitch to save it in the named folder. Subsequent additions are made as detailed above.

Creating a Stitch Collage Personal Program

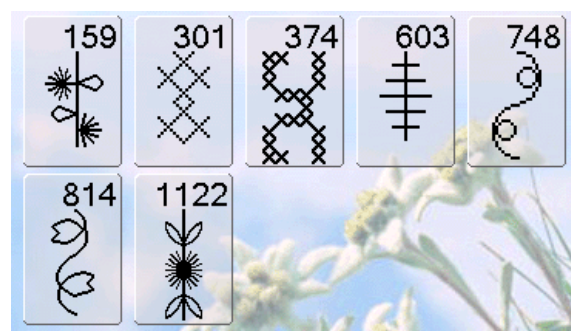
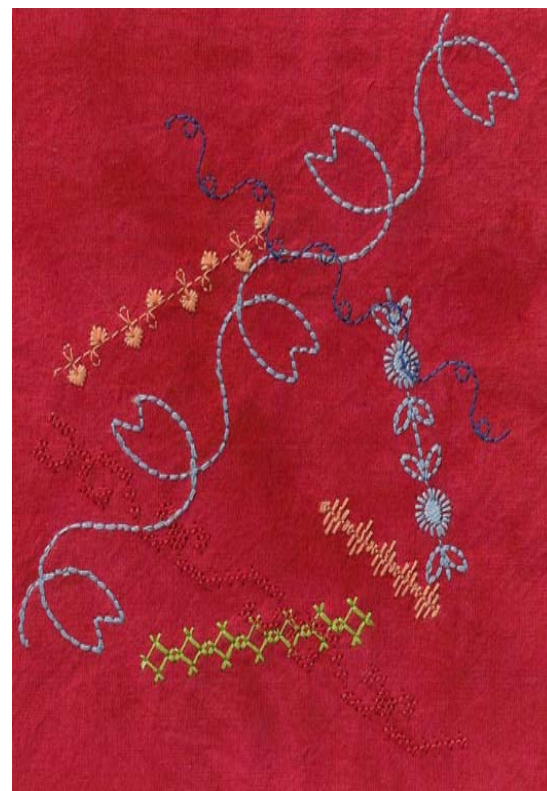
Using the directions above, enter the stitches shown below into Personal Program, making the indicated alterations.



Stitching a Stitch Collage

Place stabilizer behind the fabric. Select the Personal Program function; access the Collage folder if working on model 820 or 830.

Select the stitches as desired and sew them on stabilized fabric in a random pattern.

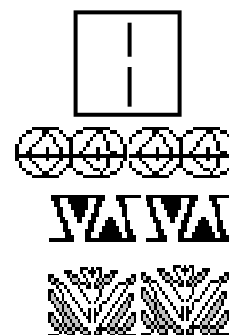


SEW-HOW

Do you know how to:

- Add stitches to your Personal Program?
- Delete stitches from Personal Program?
- Access your Personal Program?

Fabric: Firm woven fabric, 4" x 6" *and*
Heavyweight tear-away stabilizer, 4" x 6"
Needle: 80/12 Universal
Thread: 30 wt. cotton embroidery
Needle Position: center
BERNINA Presser Foot: Open Embroidery Foot #20/20C/20D



Place stabilizer behind the fabric.

Select stitch #606; sew for approximately 2"-3".

Engage the Long Stitch function and sew another 2"- 3".

Select stitch #615. Stitch a second row similar to the first.

Continue with stitch #636, stitching a third row.

Touch CLR to turn off the Long Stitch function.

Tips

- Use the Long stitch function with the straight stitch for a basting stitch.
- Adjusting the straight stitch length to 5mm and engaging the Long Stitch function will give you the longest straight stitch, about 1¼" long.
- Use the Long stitch function with a triple straight stitch for a beautiful "saddle" stitch for topstitching.



Stitch 606 Stitch 615 Stitch 636

SEW-HOW

Do you know how to:

- Engage the Long Stitch function?
- Use the Long Stitch function for basting and for topstitching?

Fabric: Firm fabric, 4" x 6" and
Heavyweight tear-away stabilizer, 4" x 6"
Needle: 80/12 Universal
Thread: 30 wt. cotton embroidery
Needle Position: center
BERNINA Presser Foot: Open Embroidery Foot #20C/20D



Use the Tapering function to taper the end of a line of stitching, create corner accents and stitch decorative frames and boxes.

Place stabilizer behind the fabric.

Select Tapering Decorative Stitch menu #1401.

Edge Alignments

Select the Tapering stitch #1401 (zigzag/satin stitch); adjust the stitch width to 6mm.

Stitch four lines of tapered stitching with a different tapering configuration for each.

Decorative Frame

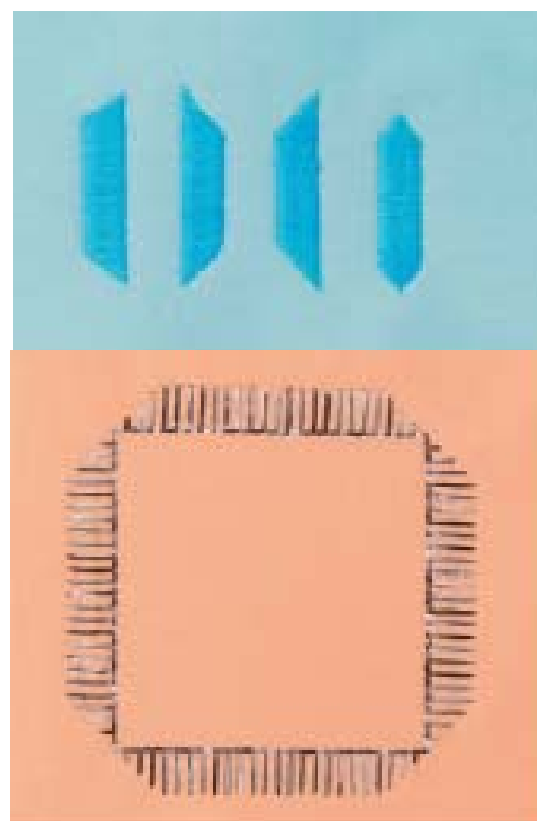
Select one of the tapering stitches, then your choice of one of the tapering configurations (sample shown is Taper stitch #1414.).

Sew one row. At the end of the first row, program the desired length, pivot your project 90 ° and sew the second row. Stitch the following rows or sides in the same manner until your frame is complete.

Tips

- Use the Needle Stop Down function for more control as you stop and pivot at the corners.
- Use the Raise Presser Foot button when pivoting your project in the corners of the design.
- Certain tapering stitches are more appropriate for geometric applications.
- Sew a test sample before sewing your project.

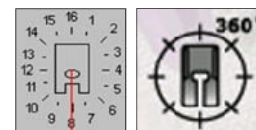
Note: To leave the Tapering Configuration menu, touch the red X.



SEW-HOW

Do you know how to:

- Create a line of tapered stitching?
- Create a square with tapered corners?

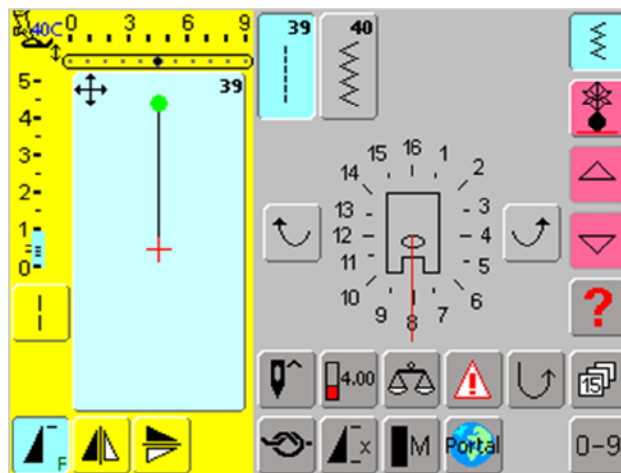


Even though Multi-Directional stitching is a feature found on the artista 730 and the BERNINA 830, it is not the same on both models. The descriptions below give an overview of each type.

artista 730

Access the 16-directional sewing menu using the Decorative Stitch Menu; scroll and select the 16-directional sewing folder. Important points to notice about the screen are:

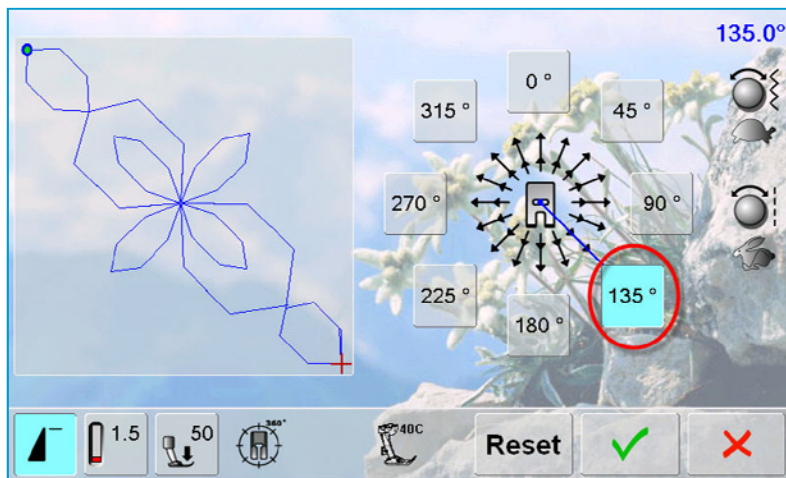
- There are two stitch choices for directional stitching, Straight (#39) and Zigzag (#40).
- There are 16 directions in which to stitch, numbered consecutively in a clockwise manner around the presser foot graphic. The arrows indicate the orientation of the stitching in relation to the presser foot, and are shown in the same orientation as they are sewn.
- The Stitch Altering Area indicates the Start (•) and Stop (+) points of the directional stitches.
- The default Straight stitch length is 1mm. This length can be reduced.
- The default Zigzag stitch width is 6mm and can be varied from 0 to 9mm.
- The default Zigzag stitch length is 0.45mm and can be varied from 0mm to 1mm.



BERNINA 830

The multi-directional stitching feature of the 830 offers sewing in 360° for single stitches and for stitch combinations.

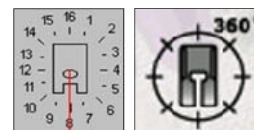
- Rotate the selected stitch in 45° increments by touching one of the direct-selection buttons on the screen.
- Rotate in 0.5° increments by turning the stitch width knob.
- Rotate in 1° increments by turning the stitch length knob.
- The Stitch Altering Area indicates the sewing direction of the stitch and the Start (•) and Stop (+) points of the selected stitch.
- The Multi-directional function only appears if the selected stitch can be sewn in multiple directions.



Keys to Successful Multi-Directional Stitching

- Support fabric with stabilizer
- Attach Slide-on Table
- Draw parallel guidelines to aid in visually keeping the fabric straight
- Use fingertip guiding
- Attach Sideways Motion Foot #40C
- Use Pattern End to check position

artista 730 and BERNINA 830 only



Fabric: Firm woven fabric, 4" x 8" and
Heavyweight tear-away stabilizer, 4" x 8"
Needle: 80/12 Universal
Thread: 30 wt. cotton embroidery
Needle Position: center
BERNINA Presser Foot: Sideways Motion Foot #40C

Place stabilizer behind fabric; mark parallel guide lines about 1" apart on the fabric as a reference for guiding during the stitching process.

artista 730

Press the Decorative Stitch Menu icon at the right side of the screen, then select the 16-directional stitching folder.

Select directional Straight stitch #39, then choose a direction from the compass template that appears on the screen. The stitch direction is chosen by pressing the clockwise and counterclockwise arrows; the red line indicates the stitch direction. Stitch 1"-2".

Select a different direction. Stitch a couple inches. Select another direction; stitch. Continue selecting directions and stitching.

Repeat using directional Zigzag stitch #40. Start at the top of the fabric, overlapping the stitching with the previous straight stitching.

BERNINA 830

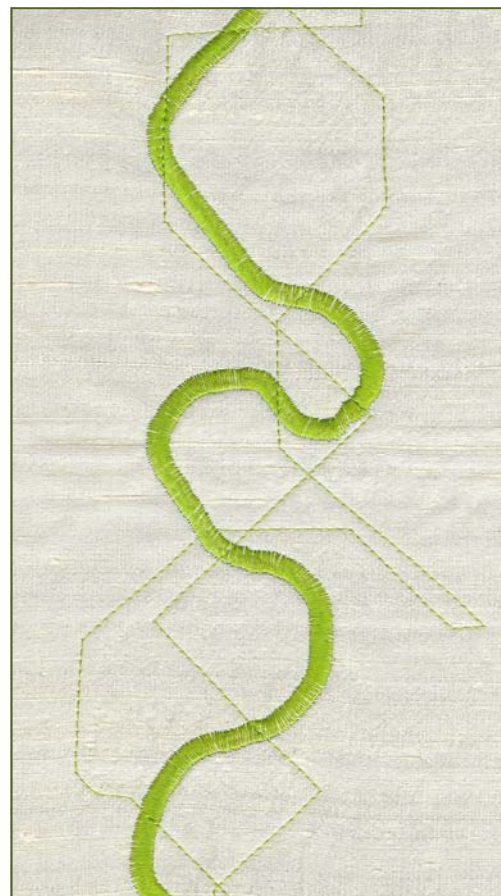
Select the Straight stitch, then select the Multi-Directional Stitching icon (the function only appears if the selected stitch can be sewn in multiple directions).

Select a direction by using the stitch width knob to rotate the stitch pattern in 0.5° steps, the stitch length knob for 1° steps or the direct-selection buttons for rotating in 45° steps for the desired direction. Stitch 1" to 2".

Select a different direction. Stitch a couple inches. Select another direction; stitch. Continue selecting directions and stitching.

Repeat, using a zigzag/satin stitch. Start at the top of the fabric and overlapping the stitching with the previous straight stitching.

Note: The artista 730 and the BERNINA 830 can change directions while stitching; the machine does not have to be stopped first.

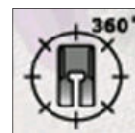


SEW-HOW

Do you know how to:

- Access the straight and zigzag stitches for Multi-Directional stitching?

BERNINA 830 only



Fabric: Firm woven fabric, 4" x 6" and
Heavyweight tear-away stabilizer, 4" x 6"
Needle: 80/12 Universal
Thread: 30 wt. cotton embroidery
Needle Position: center
BERNINA Presser Foot: Sideways Motion Foot #40C

This exercise, for the BERNINA 830 only, features an all-over design created by selecting one stitch and changing directions as you sew.

Twisted Scrolls

Place stabilizer behind fabric; mark parallel guide lines about 1" apart on the fabric as a reference for guiding during the stitching process.

Select 225° on the compass, Pattern Repeat 1x and Needle Stop Down. Stitch one stitch pattern and stop; do not remove the fabric.

Select 135° on the compass, leaving Pattern Repeat 1x and Needle Stop Down engaged. Stitch one stitch pattern and stop; do not remove the fabric.

Stitch from one end of the fabric to the other, guiding fabric so that the "+" stays parallel and perpendicular to the presser foot.

Stitch additional rows of this stitch combination, covering the surface of the fabric.

Note: Some adjustments may be necessary depending on the fabric, thread, and stabilizer used to create the stitch sample.

Optional: Create a 4-sided motif by selecting 315° and 45° as the third and fourth sides.



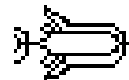
SEW-HOW

Do you know how to:

- Change directions in 45° increments when Multi-Directional stitching?

artista 730 only

Fabric: Firm woven fabric, 4" x 8" and
Heavyweight tear-away stabilizer, 4" x 8"
Needle: 80/12 Universal
Thread: 30 wt. cotton embroidery
Needle Position: center
BERNINA Presser Foot: Sideways Motion Foot #40C



This exercise has two decorative stitches programmed into memory and stitched in rows. The tulip/leaf designs are connected by directional straight stitches to vary their positions as they are stitched. The artista 730 requires the programming of the connecting stitches (Straight stitch #39) but the BERNINA 830 will add the stitches automatically once you select the Connecting stitches icon.

Trailing Tulip Vines

Place stabilizer behind fabric; mark parallel guide lines about 1" apart on the fabric as a reference for guiding during the stitching process.

artista 730

Program the following stitches in Combi Mode:

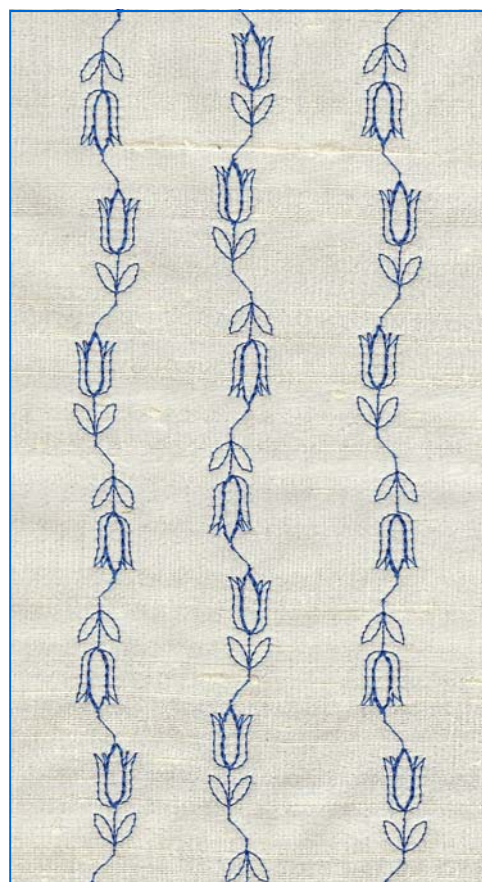
- stitch #137; Up/Down Mirror Image
- stitch #145
- stitch #39, direction 6 - 1x
- stitch #145; Up/Down Mirror Image
- stitch #137
- stitch #39, direction 10 - 1x
- stitch #145; Up/Down Mirror Image
- stitch #137
- stitch #39, direction 6 - 1x
- stitch #137; Up/Down Mirror Image
- stitch #145
- stitch #39, direction 10 - 1x

Save the combination.

Stitch from one end of the stabilized fabric to the other, using fingertip guiding to keep the presser foot parallel to the drawn guidelines.

Stitch additional rows of this stitch combination, scrolling through the stitches to start at different points.

Note: Some adjustments may be necessary depending on the fabric, thread, and stabilizer used to create the stitch sample. After stitching the first line, examine the results and make adjustments as necessary.



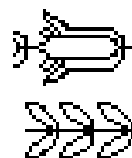
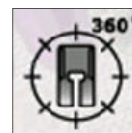
SEW-HOW

Do you know how to:

- Add Directional stitches to a stitch combination?

BERNINA 830 only

Fabric: Firm woven fabric, 4" x 8" and
Heavyweight tear-away stabilizer, 4" x 8"
Needle: 80/12 Universal
Thread: 30 wt. cotton embroidery
Needle Position: center
BERNINA Presser Foot: Sideways Motion Foot #40C



This exercise has two decorative stitches programmed into memory and stitched in rows. The tulip/leaf designs are connected by directional straight stitches to vary their positions as they are stitched. The artista 730 requires the programming of the connecting stitches (Straight stitch #39) but the BERNINA 830 will add the stitches automatically once you select the connecting stitches icon.

Trailing Tulip Vines

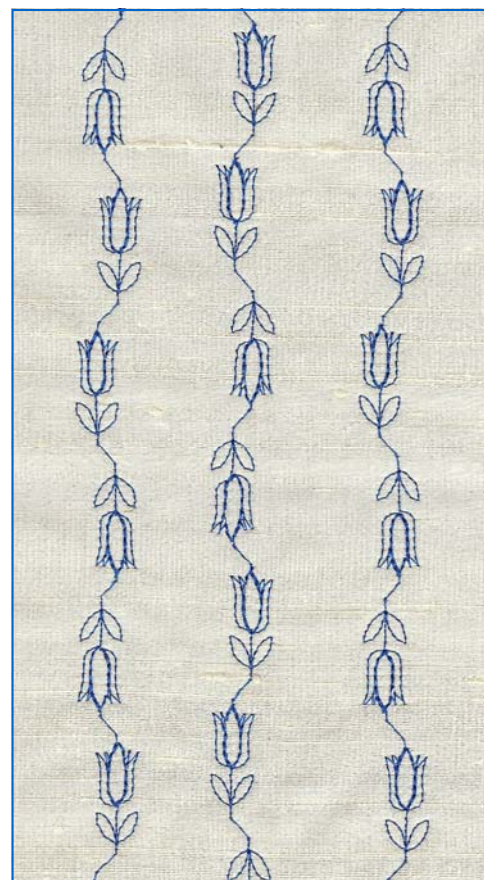
Place stabilizer behind fabric; mark parallel guide lines about 1" apart on the fabric as a reference for guiding during the stitching process.

BERNINA 830

Program the following stitches in Combi Mode:

- stitch #137; Up/Down Mirror Image; stitch #145
- stitch #145; Up/Down Mirror Image; stitch #137
- stitch #145; Up/Down Mirror Image; stitch #137
- stitch #137; Up/Down Mirror Image; stitch #145

Select the Multi-function icon; select Connecting Stitches icon. Using the Stitch Width & Stitch Length knobs, move the tulips/leaves into place, following the photo as a guide.



Note: Some adjustments may be necessary depending on the fabric, thread, and stabilizer used to create the stitch sample. After stitching the first line, examine the results and make adjustments as necessary.



Multi-function—takes you to the Preview screen



Connecting Stitches —allows you to move stitch patterns



Retrieve—select the pattern you want to move



Move Single or Multiple Pattern—move stitch pattern(s)

Save the combination.

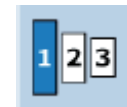
Stitch from one end of the fabric to the other, using fingertip guiding to keep the presser foot parallel to the drawn guidelines.

Stitch additional rows of this stitch combination, scrolling through the stitches to start at different points.

SEW-HOW

Do you know how to:

- Add Connecting stitches to a stitch combination?



Fabric: Firm woven fabric, 6" x 6" and
Heavyweight tear-away stabilizer, 6" x 6"

Needle: 80/12 Universal

Thread: 30 wt. cotton embroidery

Needle Position: center

BERNINA Presser Foot: Sideways Motion Foot #40C

Monogram Sizes

BERNINA 830
1 = 30mm (1.18")
2 = 20mm (0.8")
3 = 15mm (0.6")

artista 730
1 = 30mm (1.18")
2 = 20mm (0.8")
3 = 10mm (0.4")

artista 730

- Touch the Combi-Mode icon
- Select Monograms from the Alphabet menu; select two or three letters of your choice.
- Scroll up to place the cursor at the lower edge of the first letter.
- Select stitch #39 to insert the first directional stitch and to activate the compass. Locate the ending mark (red "+") on the first letter and the beginning mark (green "o") on the second. With the cursor positioned at the bottom of the first directional stitch, move the red compass line until it is in the correct direction.
- Touch stitch #39 to insert a second directional stitch.
- Touch the Multi Function icon; select Preview.
- Touch the Binocular icon to view a virtual representation of the letter placement. If the first letter is too close to the next one, touch esc and insert additional directional stitches as needed.
- Preview the combination and continue adding and adjusting stitch direction until the letter placement is correct.
- Add the Long Stitch function to each directional stitch.
- Add the Securing function to the beginning and end of the combination.

BERNINA 830

- Touch Combi-Mode icon; select desired Alphabet, then letters.
 - Move (Drag and Drop) the monograms into place on the screen.
 - Select the Multi-function icon; select Connecting Stitches icon.
- Note: For more information on this process see the Trailing Tulip Vines exercise on page 12.*

Stitching the Monogram

Place stabilizer behind fabric; mark parallel guide lines about 1" apart on the fabric as a reference for guiding during the stitching process.

Position the stabilized fabric under Sideways Motion Foot #40C.

Engage Pattern Begin and Pattern Repeat 1x.

As you stitch, guide the fabric, keeping the sides of presser foot parallel to the guiding lines drawn on the fabric. Clip and remove the basting stitches between the monogram letters.



Tips

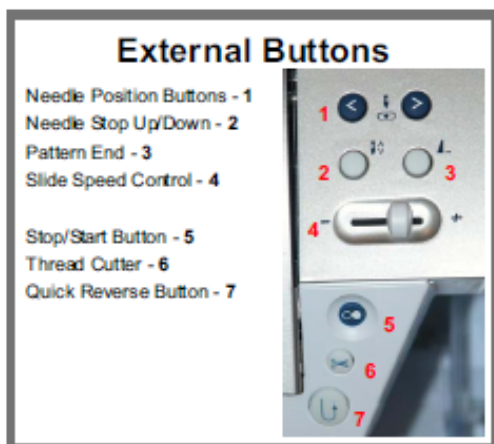
When sewing Sideways Motion stitches use the slide-on table to increase the sewing surface.

Make sure that the fabric is fed evenly and lightly, ensuring that it cannot push against or catch on anything. It is important to let the sewing computer sew, without pulling, pushing or holding back the fabric.

SEW-HOW

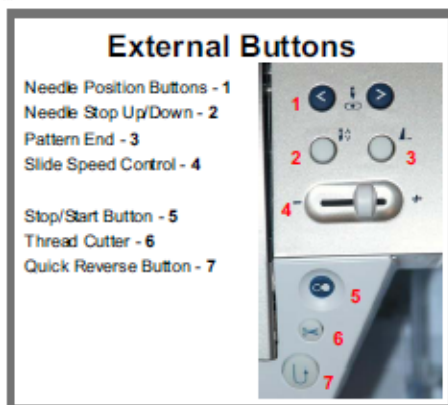
Do you know how to:

- Draw guidelines for directional stitching?
- Find the starting and ending points for the monogram letters?



Practical Stitches
Decorative/Directional Stitches
Alphabets
Buttonholes
Quilt Stitches
Personal Program
Embroidery Mode/Sewing

SEWING FUNCTIONS					
	Single Mode		Confirm Selection Single Mode		Delete
	Combi Mode		Leave Active Screen		Balance
	Stitch Selection by Number		Save Stitch Combinations & Letters		Security Program
	Securing Function with 4 Stitches		File Drawers		Alphabet Upper/Lower Case
	Continuous Reverse Sewing		Pattern End		Pattern Begin
	Pattern Repeat 1-9x		Presser Foot Indicator		Clear
	Pattern Extend 2-5x		Alphabet Lettering Size		Alphabets
	Mirror Image (Left/Right)		Multi-function Icon		Personal Program
	Mirror Image (Up/Down)		Stitch Counter for Darning		Quilt Stitches
	Buttonhole Length Direct Entry		Combination Sub-divider		Embroidery Mode/Sewing Mode
	Programming Buttonhole Length		Buttonholes		Tutorial for Embroidery
	Manual Buttonhole		Practical Stitches		Setup Program
	Long Stitch		Decorative Stitches		Thread Tension



Practical Stitches

Decorative/Directional Stitches

Alphabets

Buttonholes

Quilt Stitches

Personal Program

Embroidery Mode/Sewing

SEWING FUNCTIONS					
	Single Mode		Confirm Selection Single Mode		Delete
	Combi Mode		Leave Active Screen		Balance
	Stitch Selection by Number		Save Stitch Combinations & Letters		Security Program
	Securing Function with 4 Stitches		File Drawers		Alphabet Upper/Lower Case
	Continuous Reverse Sewing		Pattern Begin		Pattern End
	Pattern Repeat 1-9x		Presser Foot Indicator		Clear
	Pattern Extend 2-5x		Alphabet Lettering Size		Setup Program
	Mirror Image (Left/Right)		Monogram Size		Tutorial for Embroidery
	Mirror Image (Up/Down)		Multi-function Icon		Help
	Buttonhole Length Direct Entry		Stitch Counter for Darning		Thread Tension
	Programming Buttonhole Length		Combination Sub-divider (1)		Motor Speed
	Manual Buttonhole		Combination Sub-divider (2)		History
	Long Stitch		Buttonholes		myartista Portal
	Practical Stitches		Alphabets		Personal Program
	Decorative Stitches		Quilt Stitches		Embroidery Mode/Sewing Mode

External Buttons

1. Automatic Threading*
2. Securing Function*
3. Needle Up/Down
4. Pattern End
5. Presser Foot Up/Down
6. Auto Thread Cutter
7. Slide Speed Control
8. Start/Stop/Hover*
- 9 Backstepping/Quick Reverse



* Illuminated Buttons



Practical
Stitches



Decorative
Stitches



Alphabets



Buttonholes



Quilting
Stitches



Personal
Program



History
Stitches



Clear



Setup



Tutorials



Creative
Consultant



Help



Eco Mode

SEWING FUNCTIONS

	Single Mode		Confirm Selection		Delete
	Combi Mode		Leave Active Screen		Balance
	Stitch Selection by Number		History		Security Program
	Securing Function with 4 Stitches		Save Stitch Combinations & Lettering		Multi-function Icon
	Permanent Reverse Sewing		File Drawers (Memory)		Presser Foot Indicator
	Back Stepping		Combination Sub-divider (1)		Presser Foot Pressure
	Pattern Begin		Combination Sub-divider (2)		Feed Dog Position
	Pattern Repeat 1-9x		Alphabet Upper/Lower Case		Thread Tension
	Pattern Extend 2-5x		Alphabet Lettering Size		Stitch Counter
	Mirror Image (Left/Right)		Buttonhole Length Direct Entry		Long Stitch
	Mirror Image (Up/Down)		Programming Buttonhole Length		Personal Program
	Manual Buttonhole		Buttonhole Slit Width		Time/Alarm

External Buttons

1. Automatic Threading*
2. Securing Function*
3. Needle Up/Down
4. Pattern End
5. Presser Foot Up/Down
6. Auto Thread Cutter
7. Slide Speed Control
8. Start/Stop/Hover*
- 9 Backstepping/Quick Reverse



* Illuminated Buttons



Practical Stitches



Decorative Stitches



Alphabets



Buttonholes



Quilting Stitches



Personal Program



History Stitches



Setup



Tutorials



Creative Consultant



Help



Eco Mode



Embroidery/
Sewing Mode



Clear

SEWING FUNCTIONS

	Single Mode		Confirm Selection		Delete
	Combi Mode		Leave Active Screen		Balance
	Stitch Selection by Number		History		Security Program
	Securing Function with 4 Stitches		Save Stitch Combinations & Lettering		Multi-function Icon
	Permanent Reverse Sewing		File Drawers (Memory)		Retrieve
	Back Stepping		Combination Sub-divider (1)		Presser Foot Indicator
	Connecting Stitches		Combination Sub-divider (2)		Presser Foot Pressure
	Moving Single Stitch Pattern		Alphabet Upper/Lower Case		Feed Dog Position
	Moving Multiple Stitch Patterns		Alphabet Lettering Size		Multi-Directional Sewing
	Pattern Begin		Monogram Lettering Size		Thread Tension
	Pattern Repeat 1-9x		Buttonhole Length Direct Entry		Stitch Counter
	Pattern Extend 2-5x		Programming Buttonhole Length		Long Stitch
	Mirror Image (Left/Right)		Buttonhole Slit Width		Personal Program
	Mirror Image (Up/Down)		Manual Buttonhole		Time/Alarm