

# Mastering Your **BERNINA<sup>+</sup>** Embroidery Software V6.0



## *Owner's Workbook - Part 3*

# Table of Contents

**Index..... 2**

**Class 7: Appliqué ..... 3**

    Class Overview ..... 3

    Auto Appliqué ..... 4

    Appliqué Tutorial..... 6

**Class 8: Multi-Hooping ..... 7**

    Class Overview ..... 7

    Multi-Hooping ..... 8

## Class 7 - Appliqué

### Class Overview

#### Auto Appliqué

*For more detailed information about the Auto Appliqué feature, refer to the Onscreen Manual, Chapter 24 - Digitizing for Appliqué, beginning on page 274.*

#### Appliqué Tutorial using the Advanced Appliqué tool

*Quick Start Guide Chapter 11, page 176.*

This class is formatted for owners of the following levels of BERNINA<sup>®</sup> Embroidery Software, V6:

- DesignerPlus

## Class 7 - Auto Appliqué

In this design, will use a combination of Automatic Digitizing and appliqué.

Select Art Canvas.



Load Picture > select Files of Type: WMF files (\*.wmf)  
Select Snowflake.wmf>import and press Enter.



Return to the Embroidery Canvas.

Right click on Show Hoop icon. Be sure Show Hoop is selected.

Select artista 255 x 145 Oval hoop.



Show All.

Creating the appliqué portion of the design:

Before beginning the digitizing process, review the appliqué setting possibilities; select Settings > Options > Appliqué tab

This dialog box shows how many boundaries are being defined in the appliqué as well as determining the frame out positioning. (*Frame out - hoop moves for ease in positioning of applique fabric in hoop.*)

Select Single Boundary and Automatic Frame Out position; click on **OK**.



Select Auto Appliqué tool; follow the prompts in the Status line and digitize around the black hexagon shape in the snowflake graphic. Touch the <Enter> key three times to accept the default settings. The Satin cover stitch is created.

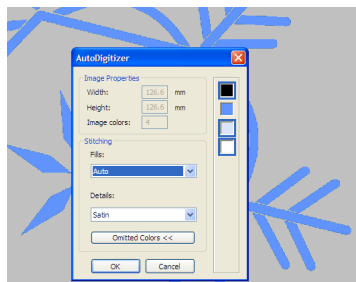
Select the AutoDigitizer tool. The Artwork Preparation dialog box opens. Number of colors: 4 colors. Click **OK**.



Click on an area of the snowflake graphic; the dialog box opens.

Choose these settings - - -

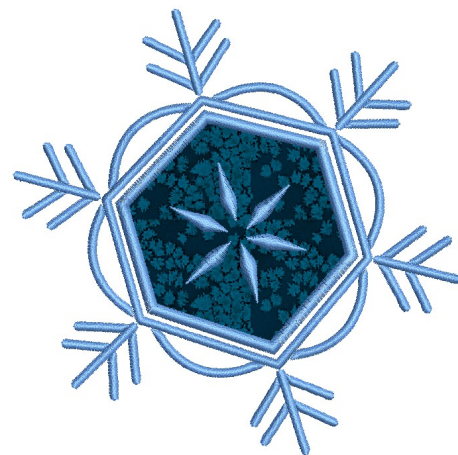
Fills: Auto; Details: Satin; Omitted colors - All except the blue of the snowflake design (*select multiple colors by holding down the <Ctrl> key*) Click **OK**.



Select Show Picture icon to turn picture off; view the design in Artistic View.



Select the appliqué stitching, change the color to C2 to match the rest of the stitching.



### Notes:

For more information on Auto Appliqué, refer to Chapter 24, Digitizing for Appliqué beginning on page 274.

### Software level

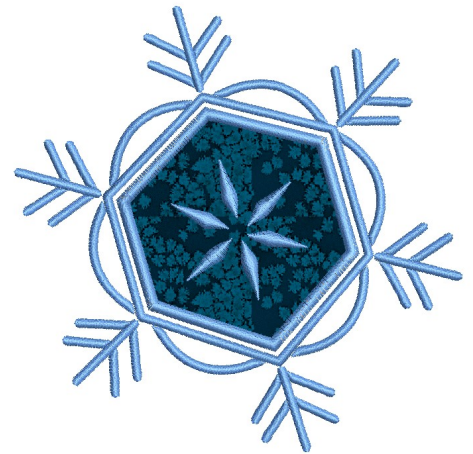
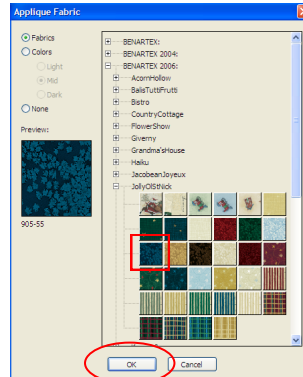
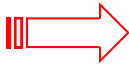
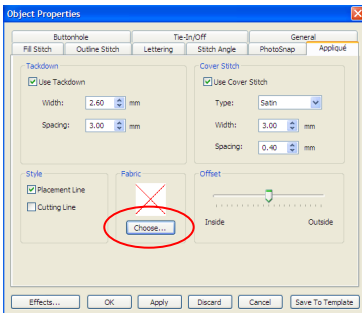
DesignerPlus. . . yes

## Class 7 - Auto Appliqué (cont'd)

Adding fabric:



With the appliqué selected; right click to open Object Properties.  
In the Fabric box, select **Choose** button; click on the (+) sign in front of the Benartex 2006 fabric collection; click on the (+) sign in front of the JollyOlStNick collection > select fabric chip 905-55; select **OK**.



### Notes:

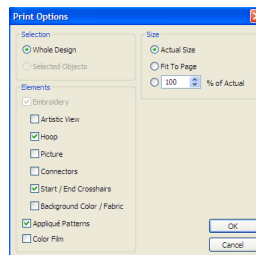
For more information on Auto Appliqué, refer to Chapter 24, Digitizing for Appliqué beginning on page 274.

Save design file.

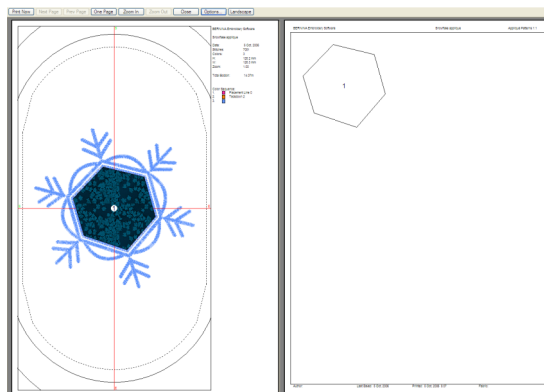
File > Save As  
Snowflake Appliqué.ART



Select Print Preview; select Options.  
Select the Hoop; Start/end Crosshairs;  
Appliqué Patterns; Actual Size options;  
click **OK**.



Print Preview should look like the following - - - the appliqué pattern is necessary to complete the embroidery.

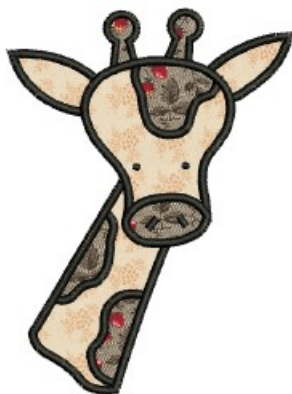


**IMPORTANT TIP:** When cutting out the pattern, cut just past the line of the shape. If you cut on the line or inside the line, your shape will be too small for the appliqué process.

### Software level

DesignerPlus. . . yes

## Class 7 - Appliqué Tutorial



OPEN the Quick Start Guide.

Help > Quick Start Guide.

*Access Chapter 11, page 176 for the step-by-step instructions to create the motif shown above.*

The Appliqué Tutorial will introduce the Advanced Appliqué feature used to create appliqués with open-objects.

Upon completion of the Tutorial, be sure to Save your design creation.

The design is ready to send to the machine of choice for stitching.

*Review Chapters 29 and 30, beginning on page 344 of the On-screen Manual.*

These chapters outline information for printing design templates/worksheets as well as sending the design to the embroidery machine.

- Review and Print your design worksheet
- Send design to the embroidery machine to be stitched

### Notes:

*For more information on Advanced Appliqué, refer to Chapter 24 ,Digitizing for Appliqué beginning on page 274.*

### Software level

DesignerPlus. . . .yes

## Class 8 - Multi-Hooping Class Overview

Hooping Large Designs with the Multi-Hooping feature.

*For detailed information on the Multi-Hooping feature, refer to the Onscreen Manual, Chapter 6, Hooping Designs, beginning on page 56.*

*For detailed information on Outputting multi-hooped designs, refer to the Onscreen Manual, Chapter 29, Outputting Designs, beginning on page 358.*

This class is formatted for owners of the following levels of BERNINA<sup>®</sup> Embroidery Software, V.5:

- DesignerPlus



## Class 8 - Multi-Hooping

### Open the design

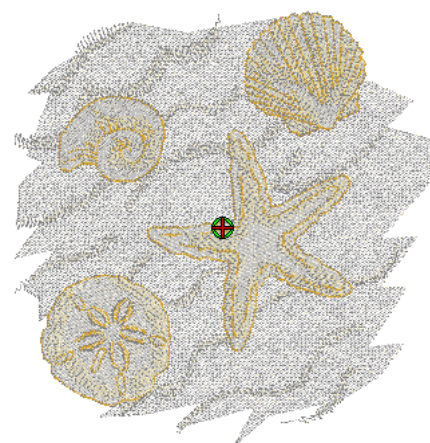
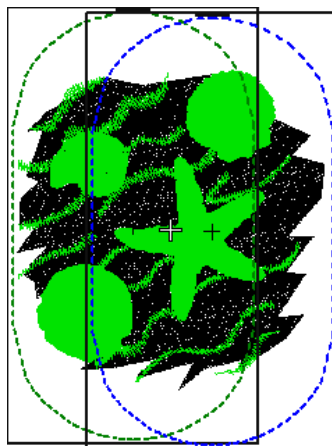
- Select *File/Open*.
- Navigate to My Computer/C: My Designs Embroidery Software 6: Seasons.
- Scroll to RC519. Click on Open.
- Select *File/Save As* and navigate to your v6 training folder.
- Name the design, Multi-hooping. Click on Save.

### Enlarging the design

- Select the design and open *Object Properties*.
- Click on the General tab.
- Place a check mark by proportional scaling and change the width to 200%.
- Click OK.
- Select the *Zoom tool* and right click on the screen two times to zoom out. Hit Esc.
- Right click on the *Show Hoop icon*.
- Choose artista 255 x 145 Oval and make sure *Display Hoops* is checked.

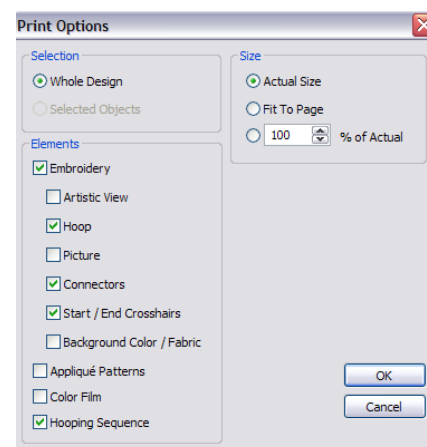
### Add hoops to the design

- Prior to adding hoops, select *View/Slow Redraw* to watch the design stitch out. Notice the order of the stitch out and the predominant angle of the stitches.
- Select the *Hoop Layout mode*.
- Move the hoop by clicking and dragging to the far left of the design since this is the first area to stitch out.
- Click on the *Add Hoop Right* icon and move the hoop to allow as much overlap of hoops as possible.
- The black area of the design is one object and will have to be split in order to be covered by the two hoops.



### Notes:

For more information on Multi-Hooping refer to Chapters 6 and 29.



### Software level

DesignerPlus. . . .yes

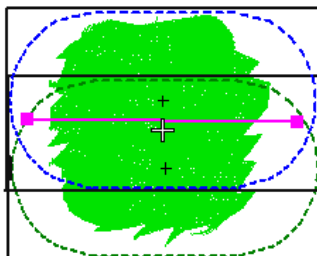
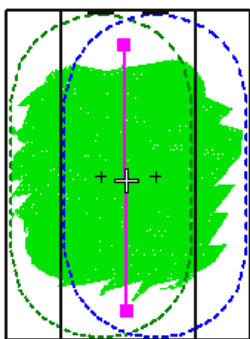


## Class 8 - Multi-Hooping

### Splitting the design



- Select the *Splitting Guide Tool* and digitize a splitting line with right and/or left clicks. Use right clicks for curved lines & left clicks for straight lines.
- Hit enter to activate. The entire design should turn green.
- Once the splitting guide is drawn, calculate the number of hoopings by clicking on the *Calculate Hoopings* icon.
- If the software calculated 3 hoopings, try rotating the hoops to a horizontal position with the Rotate Hoops icon. Hit Esc. Select the hoops and rotate each into a new position. See pictures below.
- Delete the splitting guide by selecting the line and hitting the delete key. Re-draw a new splitting guide by selecting the icon and clicking in place.



### Sending the design to the machine



- Return to *Embroidery Canvas mode*.
- Save the design.
- Select No to Export everything in one file.
- Click on the *Write to Machine* icon. The design will be split automatically into separate files.
- You may preview the stitching sequence by clicking on each file to see what part of the design stitches with each hooping.
- Click on Send Now and choose the machine of your choice.

### Printing templates

- Select *File/Print Preview*.
- Select *Options* and make sure *Hooping Sequence* is checked.
- Notice that the hoops are printed and color coded for stitch sequence.
- Click Close.

### A Word About Splitting

*Right clicks draw curved lines and left clicks draw straight lines.*

*Splits should be drawn within the sewing field of overlapping hoops.*

*Split lines can be reshaped by selecting the line and using the Reshape Splitting Guide icon.*

*One or more split lines can be digitized.*

*The split will not necessarily occur along the digitized line; instead, it will be made as inconspicuous as possible.*

*Objects will preserve their object type, stitch angle, parameters, and color.*

*The splitting guide will only split those overlapping objects which need to be split and will still follow the rule to "preserve the sewing sequence". This will sometimes produce more hoopings than the user would think (or like) but it means the integrity of the digitizers work is maintained.*

*Sometimes by moving the hoops a little closer together, you will get fewer hoopings.*

*Sometimes by rotating the hoops, you will get fewer hoopings.*

*Remember the benefit of Calculate Hoopings!*

## Advanced Appliqué



### Setup

- Select *File and New* or click on the New Icon.
- Right click on *Show Hoop*. From the list of available hoops, select artista 255 X 145 Oval.
- Click OK to confirm and close the dialog box.



### Save the File

- Select *File and Save As*.
- Navigate to the v6 Training folder.
- Name the file Advanced Appliqué 1 and Save.

### Art Canvas

- Change to the *Art Canvas mode*.
- Select *Load Picture*.
- Locate Local disk C > My Designs Embroidery software V6 > Artwork. Click on Files of Type and select wmf. Import *Big Flower.wmf*.
- Move the mouse cursor to the middle of the page and left click.
- Select a corner resizing handle and enlarge the picture to about 135%.
- With the picture selected, select *Bitmaps* on the Menu bar and *Convert to Bitmap*.
  - ⇒ Change DPI to 96.
  - ⇒ Change Color Mode to Paletted (8-bit). Click OK.
- Return to *Embroidery Canvas*.



### Digitizing the Stem

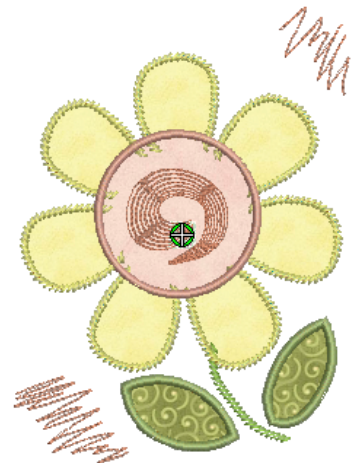
- Deselect the picture by clicking outside the bounding boxes.
- Click on the Outline button.
- Select Stemstitch from the drop down choices.
- Select color C33 from the colors.
- Select *Free Hand Embroidery—Open Object*.
- Set the Smoothing bar to 100%.

**Note:** The Smoothing bar controls how close the outline follows the original moves of the mouse. When you increase the %, the number of control points decrease, making a smoother curve.

- Draw the stem of the flower, beginning slightly under the flower petal. Click and drag the mouse to draw. Hit enter to activate the stitches.
- Reshape if needed by selecting the *Reshape Object Tool*.

**Note:** You may delete, add, move, or change control points, just as with the other digitizing tools.

- Select the line, open *Object Properties*, change the line thickness to 3. Click OK.



### Notes:

If you have a mouse with a Scroll Wheel, you can zoom in and out on the screen using the scroll wheel. The position of the cursor on the screen will determine the zoom centering.

Auto Scroll will move the screen as you reach the screen's edge. Make adjustments to Auto Scroll in the Settings > Options box under the Auto Scroll tab.

By reducing DPI and the Color Mode you are reducing the file size of the picture.

The Freehand drawing tools are new to v6.



To erase part of a line as you are drawing, press and hold the SHIFT key while dragging backwards.

Backspace key will remove digitized points, one click at a time.

The Escape key will erase any line or object while you are drawing so you can start

## Digitize the Leaves



- Select color C32 from the Color bar.
- Choose satin as the stitch from the drop down arrow of the Outline bar.
- Activate *Auto Underlay*.
- Select the *Closed Object Tool*. Digitize the leaf on the left. Use left clicks to set the points at the end of the leaf and right clicks on the curves of the leaf. Place the line in between the two lines of the leaves. Hit *Enter* to activate the stitches.
- Select the *Freehand Draw Embroidery—Closed Tool*.
- Draw around the leaf on the right, inside the two leaf lines.
- Let the software close the shape by selecting *Enter* when the shape is almost completed. Hit *Esc*.
- Select both leaves by holding the *Control* key down, open *Object Properties* and change the satin width to 3. Click *Apply*. Deselect the leaves.
- Reshape either leaf if desired.

### Notes:

Use can any of the software's outline stitch options to create the appliqué outline. You can even combine different outlines stitch types.

*The Freehand Draw Closed Tool draws a line around the object. After Enter is selected, the selected stitch type will be shown.*

## Digitizing the Flower Petals



- Select Color C40. Select *Stemstich* from the Outline bar.
- Select the *Open Object Tool* and use left and right clicks around one of the flower petals. Draw the line between the lines of the petals on the picture.
- Touch *Enter* to activate the stitches. Hit *Esc*.
- Select the petal; then click on the *Wreath tool*. Change the drop down box to 7. Click on the screen when the petals are arranged as you want.

## Flower Center



- Select the *Circle/Oval tool* for the flower center.
- Select satin stitch from the Outline button.
- Select Color C10.
- Click in the center of the flower and drag to the perimeter of the circle.
- Click again. Hit *Enter* to activate the stitches.

## Flower Center Embellishment



- Select Color C51.
- Select the *Block Digitizing Tool*.
- Digitize around the swirl in the flower center. Hit *enter* to activate the stitches.
- Hit *Esc*.
- Select the swirl and choose *Contour* from the Fill drop-down menu. Hit *Esc*.

*The Contour fill is new to Designer Plus.*



- Select the white background of the picture.
- Delete the picture.
- Save the file.

## Add accents to your flower.



- Select the *Freehand Draw Embroidery—Open tool*.
- Change to triple stitch outline.
- Add accents to your picture as desired.
- Hit Enter to activate the stitches for each accent.
- Hit Esc to deactivate the tool.

## Advanced Appliqué



- Open *Color Film* and click on the leaves. Hold the Shift key down and click on the flower center. Activate *Advanced Appliqué*.
- Click on *Place Fabric and Color in Patches*.
  - ⇒ Click on the + next to BENARTEX 2004 to expand the menu.
  - ⇒ Click on the + next to Charms to view the fabric swatches.
  - ⇒ Select 388-31 (5th row, second swatch) and click on each of the flower petals.
  - ⇒ Select 388-22 (5th row, first swatch) and click on the flower center.
  - ⇒ Select 384-40 (3rd row, fourth swatch) and click on the leaves.
  - ⇒ Select Back.
  - ⇒ Select Close.

## Save the File

- Select *File > Save As*.
- Name the file Advanced Appliqué 2 and save.



## Break Apart

*Note: The Break Apart icon can be used to resequence the order of stitching for a more efficient stitch out.*

- Select *Edit > Select All*.
- Click on the *Break Apart Tool*.
- Select *Edit > Select All*.
- Select *Resequence by Color*.
- Keep the same sequence as listed in the dialog box.
- Select *File > Save As*.
- Name the file, Advanced Appliqué 3 and save.

*It is so convenient to delete pictures in the Embroidery Canvas mode!*

*The Freehand drawing tools are a great addition to v6. They are best used for shading, adding texture, thread painting, doodling, or creating a hand-drawn look. Think of water, wisps of clouds, and add accents and emphasis to designs with these tools.*

*They can be used with any stitch type except contour.*

*If any of your petals do not have cross marks on them, then you must select BACK and RECOVER YOUR ORIGINAL EMBROIDERY OBJECTS. Select the Reshape icon and move the ends of the petals so they are under the flower center. Repeat the process to add appliqué.*

*The Break Apart tool is a special type of ungrouping. It is used for lettering, appliqué, monograms, and blackwork run.*

*It is always recommended that you save the file as an appliqué and then save the file as a broken apart appliqué.*

## Multi-hooping



### Open the design

- Select *File/Open*.
- Navigate to My Computer/C: My Designs Embroidery Software 6: Seasons.
- Scroll to RC519. Click on Open.
- Select *File/Save As* and navigate to your v6 training folder.
- Name the design, Multi-hooping. Click on Save.



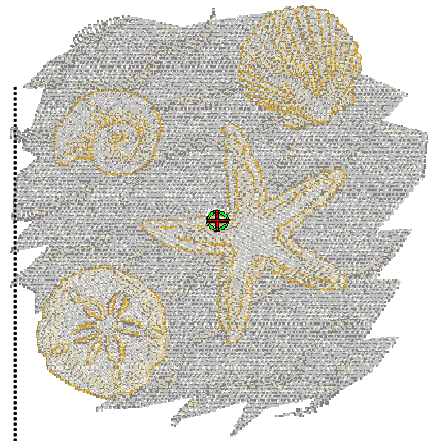
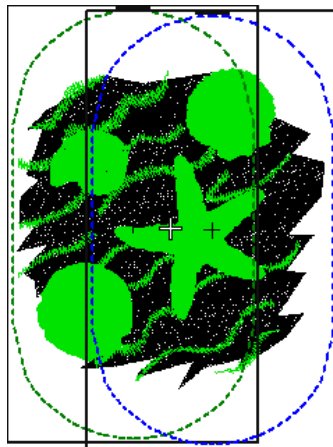
### Enlarging the design

- Select the design and open *Object Properties*.
- Click on the General tab.
- Place a check mark by proportional scaling and change the width to 200%.
- Click OK.
- Select the *Zoom tool* and right click on the screen two times to zoom out. Hit Esc.
- Right click on the *Show Hoop icon*.
- Choose artista 255 x 145 Oval and make sure *Display Hoops* is checked.



### Add hoops to the design

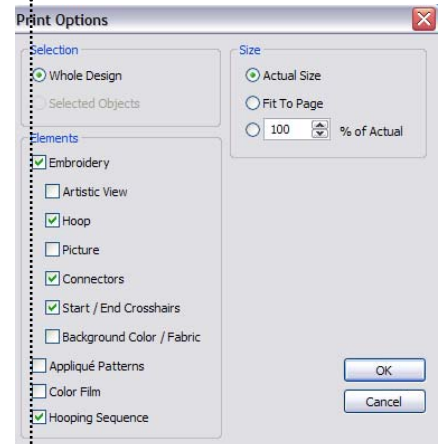
- Prior to adding hoops, select *View/Slow Redraw* to watch the design stitch out. Notice the order of the stitch out and the predominant angle of the stitches.
- Select the *Hoop Layout mode*.
- Move the hoop by clicking and dragging to the far left of the design since this is the first area to stitch out.
- Click on the *Add Hoop Right* icon and move the hoop to allow as much overlap of hoops as possible.
- The black area of the design is one object and will have to be split in order to be covered by the two hoops.



### Notes:

**It is always best to look at the design sequence before placing the hoops in a multi-hooped design. You can do this through Color Film or by View/Slow Redraw.**

**Knowing the design sequence helps you place hoop 1, 2, etc. in the same sequence for fewer hooppings.**

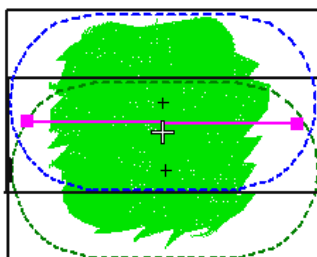
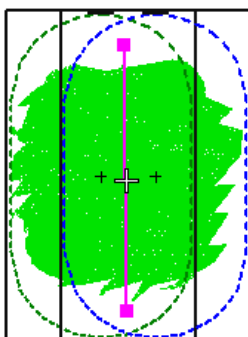




## Splitting the design



- Select the *Splitting Guide Tool* and digitize a splitting line with right and/or left clicks. Use right clicks for curved lines & left clicks for straight lines.
- Hit enter to activate. The entire design should turn green.
- Once the splitting guide is drawn, calculate the number of hoopings by clicking on the *Calculate Hoopings icon*.
- If the software calculated 3 hoopings, try rotating the hoops to a horizontal position with the *Rotate Hoops icon*. Hit Esc. Select the hoops and rotate each into a new position. See pictures below.
- Delete the splitting guide by selecting the line and hitting the delete key. Re-draw a new splitting guide by selecting the icon and clicking in place.



## Sending the design to the machine



- Return to *Embroidery Canvas mode*.
- Save the design.
- Select No to Export everything in one file.
- Click on the *Write to Machine icon*. The design will be split automatically into separate files.
- You may preview the stitching sequence by clicking on each file to see what part of the design stitches with each hooping.
- Click on Send Now and choose the machine of your choice.

## Printing templates

- Select *File/Print Preview*.
- Select *Options* and make sure *Hooping Sequence* is checked.
- Notice that the hoops are printed and color coded for stitch sequence.
- Click Close.

## A Word About Splitting

*Right clicks draw curved lines and left clicks draw straight lines.*

*Splits should be drawn within the sewing field of overlapping hoops.*

*Split lines can be reshaped by selecting the line and using the Reshape Splitting Guide icon.*



*One or more split lines can be digitized.*

*The split will not necessarily occur along the digitized line; instead, it will be made as inconspicuous as possible.*

*Objects will preserve their object type, stitch angle, parameters, and color.*

*The splitting guide will only split those overlapping objects which need to be split and will still follow the rule to "preserve the sewing sequence". This will sometimes produce more hoopings than the user would think (or like) but it means the integrity of the digitizers work is maintained.*

*Sometimes by moving the hoops a little closer together, you will get fewer hoopings.*

*Sometimes by rotating the hoops, you will get fewer hoopings.*

*Remember the benefit of Calculate Hoopings!*



# Mastering Your **BERNINA<sup>+</sup>**

Embroidery Software V6.0



# *Multi-Hooping Feature*

The DesignerPlus level, V6, incorporates the ability to split large embroidery designs into multiple hoopings.

The Multi-Hooping feature automatically adds the registration marks to each design section making it easy to put the entire design back together during the embroidery process.



A “sticky-backed” stabilizer is necessary to complete this process – Aqua Mesh Plus is a good option.















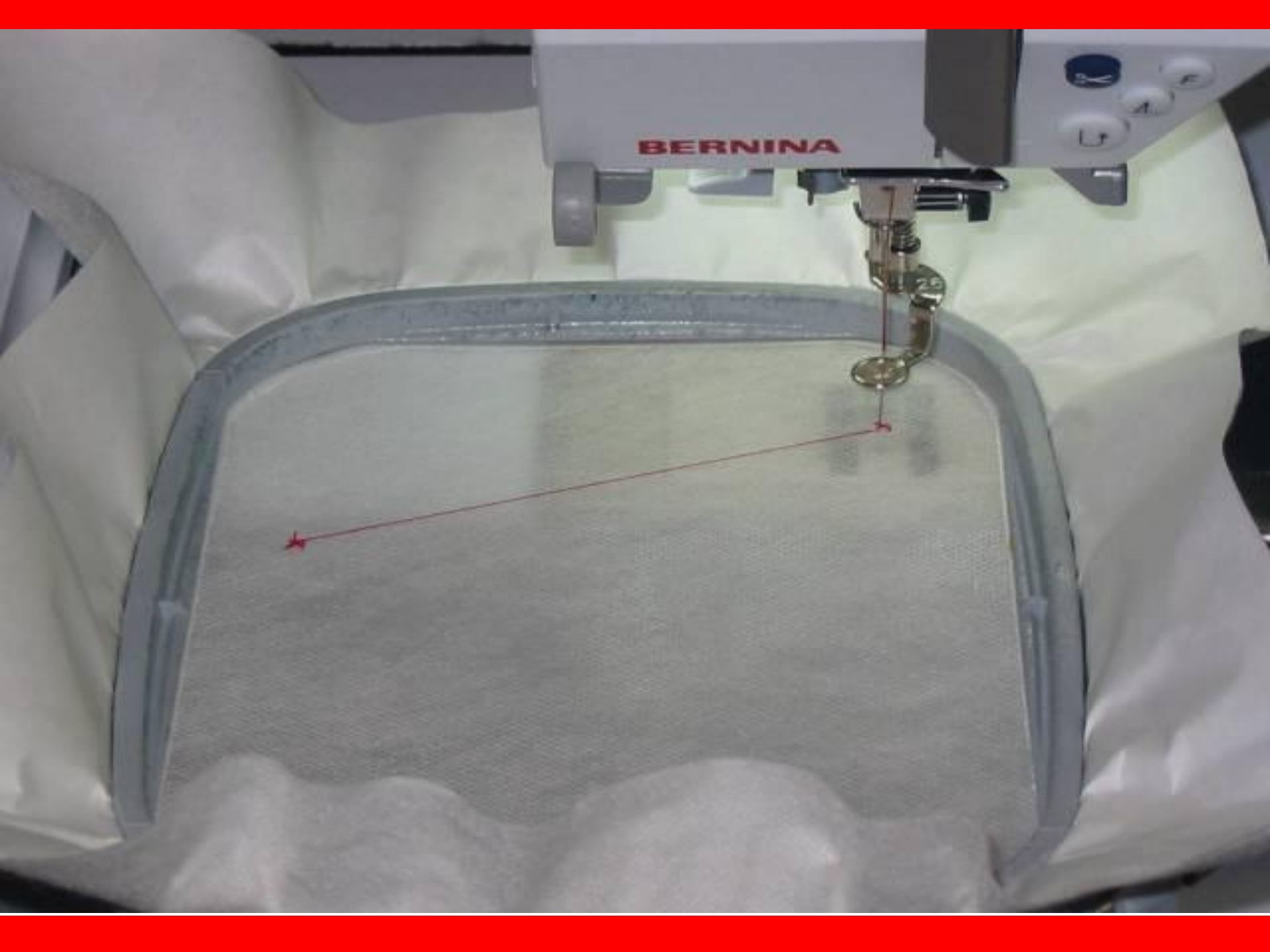








**BERNINA**





**BERNINA<sup>+</sup>**



