

## 8-Series Mastery 6—Introduction to Embroidery

### Supplies— Embroidery

Standard embroidery threads, bobbin thread, fabrics and stabilizer, unless otherwise noted

Most samples are sewn in the Oval hoop and trimmed to fit onto an 8 1/2 x 11" page

Cardstock for printing and mounting samples to

Sheet Protectors

8 1/2" x 11" Notebook

Double Stick Tape

Wave Rotary Blade, Ruler and Mat

### Rescale and Rotate

- Select Motif #19 and rotate -45
- Duplicate motif and Mirror Image left/right, rotate 45 and re-scale to 130%
- Add Motif #19, rotate 30 design and resize only the height 190%
- Add Motif #19, rotate 30 design and resize only the width 175%
- Embroider in the medium hoop



### Mirror Image

- Select Motif #20 and the oval hoop
- Duplicate and Mirror Image Left/Right
- Move design next to first one
- Use Retrieve to Select All and Duplicate
- Mirror Image Top/Bottom and use the knobs to move below the first set
- Use Retrieve to Select All and Center (by pressing the move icon twice)
- Add motif # 18
- Rescale 84% and Rotate 33%
- Duplicate and Mirror Image Left/Right
- Move next to the first design
- Duplicate and move a second set to below the central design



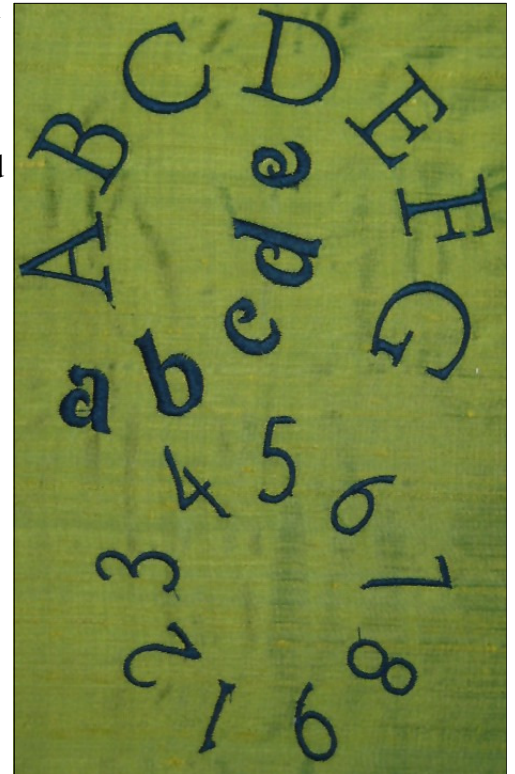
## Alphabets

- Select each of the 10 alphabets and type Abc (uppercase A, lowercase b and c)
- Arrange on screen within the oval hoop using vertical and horizontal baselines
- Embroider, trim and mount (finished sample size: 6 1/2" square)



## Word Art

- Create Design as pictured
- To create, use King Charles Upper case and the letters A-G (all caps)
- Use Word Art to curve (Stitch Length knob) and change the spacing (Stitch Width Knob)
- Add the Victoria Font and type a-e in lower case, use Word Art to curve. Use the rotate icon to change placement on curve
- Add King Charles Numbers 1-9 and use the spacing and curving to form a complete circle



## Knobs

- Select Design #22 and the oval hoop
- Rescale to 70%
- Duplicate, Mirror Image (left/right) and move so buds overlap
- Use Retrieve to select all and Mirror Image (top/Bottom)
- Use the knobs to move the design to intertwine with the first set
- Use Retrieve to select all and Center by touching the Move icon twice
- Add Alice Alphabet and type Floral
- Move above the design and use Word Art to arc lettering (32%)
- Add Alice Alphabet and type Wonder
- Move below the design and use Word Art to arc lettering (-32%)
- *NOTE: Using the knobs for moving designs moves designs without selecting underlying designs as one design moves over the other*



## Combine Designs

- Select Susanne Muller #19
- Add the Anniversary Alphabet letter M and rescale to 155
- Move the letter above the first design
- Import Stitch #170 into embroidery
- Add the stitch to the file and duplicate to get more
- Scatter them above and below the design
- Resize a few, rotate them and leave some the original size



## Properties

- Stitch Design 29 with default settings and Isacord Thread
- Stitch Design 29 with Density changed to 75% and Isacord Thread
- Stitch Design 29 with Density changed to 50% and Isacord Thread
- Stitch Design 29 with Density changed to 30% and thread the needle with Perle Cotton #16 or Cordonnet or other thick needle thread
- When mounting, use the place cards (included) to distinguish between the density settings



Original 100% Density



75% Density



50% Density



30% Density, Size 16 Perle Cotton