

8-Series Mastery 3—In Stitches

Stitchout Suggestions

- Stitching out the decorative Stitches is the most effective way to see how beautiful they are and to plan projects using them. Stitch them on fabrics and mount to 4x6 cards or 5x7 cards and make a stitch reference book. Don't forget to number them for easy recall.
- To stitch your way through the guide classes consider making a reference book and mount the samples alphabetically for easy look-up. Left over fabrics are perfect for these small samples.

Supplies – General supplies used unless otherwise indicated

- Miscellaneous fabrics
- Light weight tearaway stabilizer
- Size 90 Microtex Needle
- 30 weight cotton threads for decorative stitching (all samples)
- 60 wt in the bobbin
- Wavy rotary cutter and pinking shears for trimming samples
- Cardstock for frames (optional) or mounting pages
- Double-stick tape



Mirror Image (MI)

- Mirror Image with pattern #681
 - Sew one pattern with default settings
 - Engage MI Left/Right and sew one pattern
 - Disengage MI and engage MI top/bottom, sew one pattern
 - Disengage MI and engage MI top/bottom and left/right, sew one pattern
- Select Stitch #471, sew one pattern, then sew a second with Top/Bottom Mirror Image
- Select Stitch #172, sew one pattern, then sew a second with Left/Right Mirror Image
- Select Stitch #1121, sew one pattern, then sew a second with both Mirror Image functions engaged



Tip: Setting Pattern Repeat to 1 will easily allow you to sew one motif each time





Long Stitch

- Sew stitch #638 for 1-2", then engage Long Stitch and sew the remainder of the 5" swatch
- Sew stitch #655 for 1-2", then engage Long Stitch and finish the row
- Sew stitch #606 for 1-2", then engage Long Stitch and finish the row
- Sew stitch #615 for 1-2", then engage Long Stitch and finish the row
- Sew stitch #636 for 1-2", then engage Long Stitch and finish the row



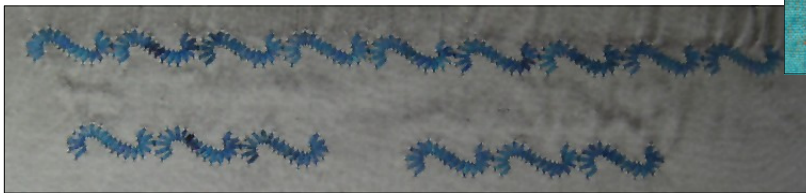
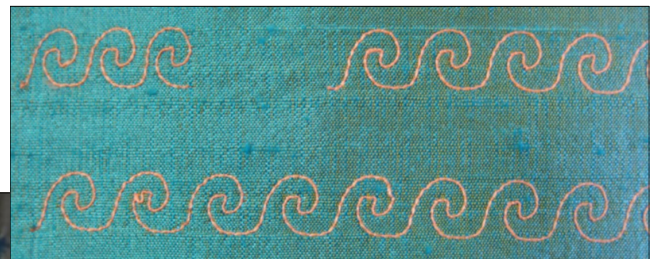
Pattern Extend

- Select Stitch #414 and engage single pattern
- Sew stitch with default settings
- Sew stitch with pattern extend=2 and single pattern
- Sew stitch with pattern extend=3 and single pattern
- Sew stitch with pattern extend=4 and single pattern
- Sew stitch with pattern extend=5 and single pattern



Pattern Repeat

- Select stitch #687 (or #767) and set pattern repeat to 3; stitch
- Select stitch #687 (or #767) and set pattern repeat to 9; stitch



Backstepping

- Select stitch # 8 (Honeycomb) and stitch 5", then activate backstepping (quick reverse button) and stitch back for about 2"
- Select stitch # 101 (Floral) and stitch 5 patterns, then activate backstepping (quick reverse button) and stitch back for 3 floral patterns

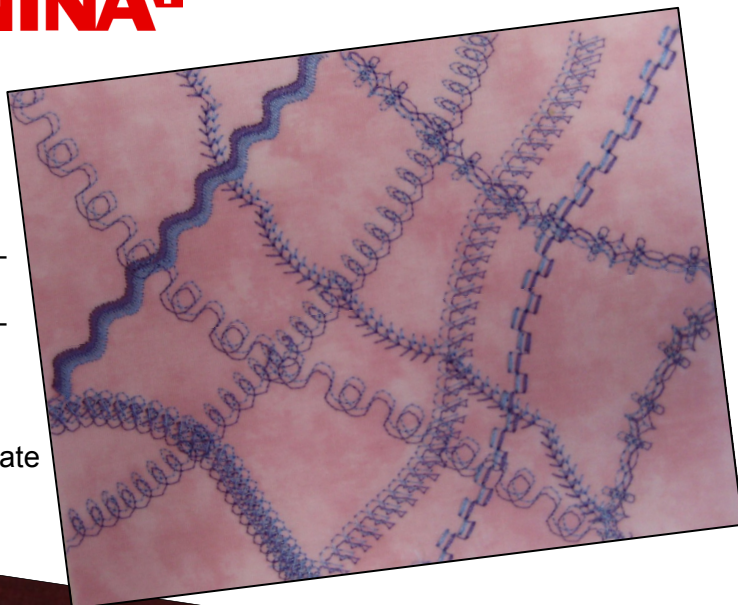


Tip: use when the thread breaks to back up to the gap and start again.



Security Program

- Select the Security Program and Select Double Needle 2.0 and the 9mm Stitch Plate
- Insert a Double Needle and thread with manual threading and 2 threads
- Select from a variety of stitches such as 14, 140, 309, 402, 709, 741, 750 and 755
- When you are finished, remember to deactivate the security program



Combi-Mode

- (830) Open combi-mode and input stitch #170 and #466, Set Pattern Repeat to 3
- (820/830) Open combi-mode and input stitch #676, #676 (Mirror Image Top/Bottom), #669 (MI T/B) and #669, Set pattern repeat to 4
- (830) Open combi-mode and input stitch #687, #1119 and #687 Mirror Image T/B,
- (820/830) Open combi-mode and add stitch #603, 607, 603 and 607 (MI T/B)
- Save the combinations



Alphabets

- Stitch each Alphabet with its given name: Block (all caps), Open Block (all caps), Script (upper and lower case), Quilt Text (all caps), Comic Sans (all caps). Stitch all five on 1 fabric square and frame with card-stock; mount to appropriate page.
- 830 Only—Stitch a letter from the Monogramming alphabet in all 3 sizes. Remember to use Sideways Motion Foot #40.

