

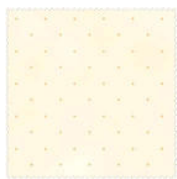
Memories of Provence

2012 Block of the Month

By Monique Dillard
Open Gate Quilts
www.opengatequilts.com

Month 3

Make 1
Square up to 12½"



2 - 4½" squares, (Step 2)
cut diagonally once
2 - 4½" squares (Step 3)
cut diagonally twice
1 - 2"x17" strip (Step 1)



1 - 3½" square (Step 1)
Center



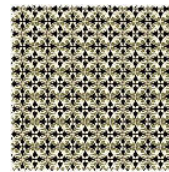
2 - 4½" squares (Step 3)
cut diagonally twice



2 - 4¼" squares
of each color cut
diagonally once
(Step 3)



2 - 3½" squares (Step 2)
cut diagonally once



1 - 2"x17" strip (Step 1)

You will need the "Fit to Be Square Ruler" by Open Gate Quilts

Formatted by Thea Jirak of Quilting Delights for 2012 Block of the Month Program.
All rights to this pattern belong to Open Gate Quilts except as transferred to Quilting Delights.
This pattern is copyrighted and **permission is not granted to make copies.**
Copies are available through Quilting Delights, www.quiltingdelights.com,
(503) 658-1600, 14863 SE Oregon Trail Drive, Clackamas, OR 97015. Thank you.

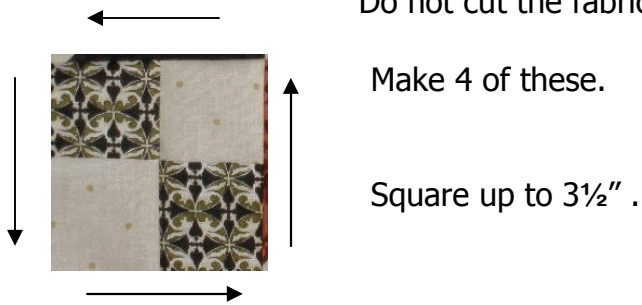
Step 1 - Corner 4 Patch - Make 4

Sew the 2" x 17" Background Strip and Black/Green Strip together lengthwise with a scant 1/4" seam. Press to the dark strip. This should measure 3 1/2" in width.

Subcut to 2" x 3 1/2" subsections - Cut 8.

Turn and sew together, making sure to nest the seams together in the middle.

Pinwheel the center of the block on the back so that the seams all are pressed in the same direction. Simply release the stitches and press. Do not cut the fabric!



Step 2 - Square in a Square in a Square - Make 1

Cut the Green and Background squares in half diagonally into triangles.

Sew 4 green triangles around your center 3 1/2" Fussy Cut Square. Press away from the center.

Use your square in a square ruler to square this up to 4 3/4" including 1/4" seam allowances.

Add another round of Background triangles. Press away from the center.

Use your square in a square ruler to square this up to 6 1/2" including 1/4" seam allowances.



Step 3 - Make 4 of each color way



These units get assembled with triangles. No other way to do it!!

When assembled, square up to 3 1/2" and sew a red/black one to a red/blue one. Make 4 of these units 3 1/2" x 6 1/2".

Assemble in rows as shown to the right, using path of least resistance in pressing!

Square up to 12 1/2". When??

When we get ready to assemble our Quilt Top!

