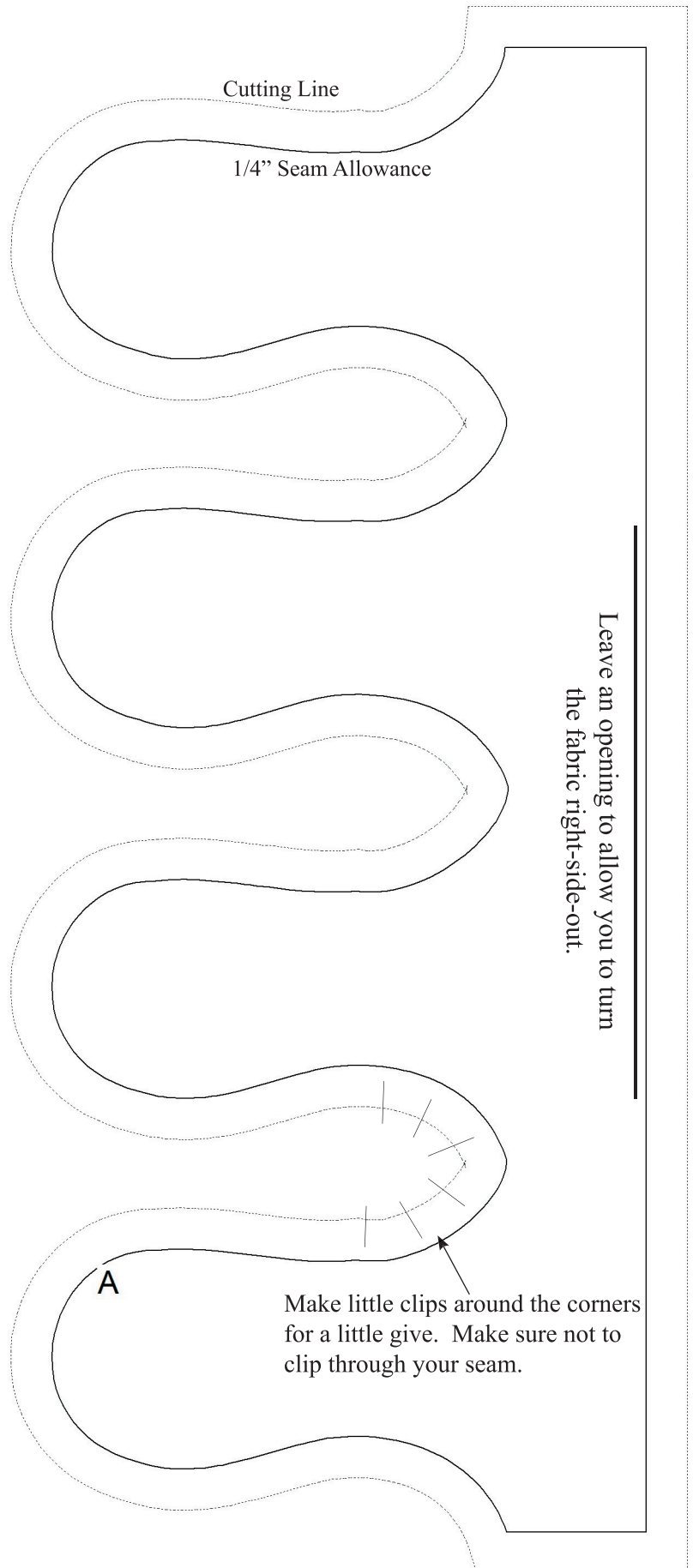




## TWBP12 Cow Patternlet Additional Idea

Trace Piece A onto a piece of paper or template plastic. Cut out along the Outer Line to create your template. Layer two pieces of cream fabric, Right Sides Together. Pin the pattern piece onto the fabric and cut out around the outside line (or trace and cut if using template plastic.) Sew around the edge with a 1/4" seam all the way around leaving an opening as indicated so you can turn the fabric right side out. Clip around the inside corners as indicated to allow some give. After turning right side out, stitch the opening closed and iron. Attach the udders to the bottom of the towel on the back side by either machine sewing with a matching thread (which I did- the towel is so black you can barely see the black thread) or hand-sewing. Put the cow onto the towel following the directions on the patternlet.

These instructions are provided by:  
The Wooden Bear Quilt Designs  
1352 Oak Valley Dr.  
Lincoln, CA 95648  
1-866-WBQUILT  
woodenbearqd@aol.com  
www.thewoodenbear.com



They are intended to give customers additional ideas for using our patternlets. These instructions may be copied, but please do not copy the original "Patternlets."