



# Clarabelle

Fabric by Skipping Stones Studio  
Pattern Design by Anita Peluso 65" x 73"

[www.clothworks.com](http://www.clothworks.com)    [info@clothworks.com](mailto:info@clothworks.com)

## Materials

Yardages based on 42" wide *unwashed* fabric. Prewashing fabric may require additional yardage.

- 1/4 Yd - Blue Cameo (Y0931-33)
- 1/4 Yd - Pink Sm. Floral (Y0932-41)
- 1 3/4 Yds - Cream Lg. Floral (Y0933-2)
- 1/4 Yd - Green Tonal (Y0930-23)
- 1/4 Yd - Khaki Sm. Floral (Y0932-11)
- 5/8 Yd - Black Lg. Floral (Y0933-3)
- 1/2 Yd - Pink Tonal (Y0930-41)
- 1/2 Yd - Red Cameo (Y0931-48)
- 7/8 Yd - Blue Lg. Floral (Y0933-32)
- 3/4 Yd - Blue Sm. Floral (Y0932-33)
- 1 Yd - Black Cameo (Y0931-3)
- 4-1/2 Yds - backing of your choice

## Cut the Fabrics

WOF = Width of Fabric  
LOF = Length of Fabric

### From the Blue Cameo cut:

- 1 - 7 1/4" square, cut in half diagonally twice to yield 4 triangles.

### From the Pink Sm. Floral cut:

- 1 - 7 1/4" square, cut in half diagonally twice to yield 4 triangles.

### From the Cream Lg. Floral cut:

- 6 - 6 1/2" squares
- 8 - 6 1/2" WOF strips (Outer Border)

### From the Green Tonal cut:

- 2 - 7 1/4" squares, cut in half diagonally twice to yield 8 triangles.
- 3 - 6 7/8" squares, cut in half diagonally once to yield 6 triangles.

### From the Khaki Sm. Floral cut:

- 2 - 7 1/4" squares, cut in half diagonally twice to yield 8 triangles.
- 3 - 6 7/8" squares, cut in half diagonally once to yield 6 triangles.

### From the Black Lg. Floral cut:

- 14 - 6 1/2" squares

### From the Pink Tonal cut:

- 2 - 7 1/4" squares, cut in half diagonally twice to yield 8 triangles.
- 7 - 6 7/8" squares, cut in half diagonally once to yield 14 triangles.

### From the Red Cameo cut:

- 2 - 7 1/4" squares, cut in half diagonally twice to yield 8 triangles.
- 7 - 6 7/8" squares, cut in half diagonally once to yield 14 triangles.

### From the Blue Lg. Floral cut:

- 22 - 6 1/2" squares

### From the Blue Sm. Floral cut:

- 11 - 6 7/8" squares, cut in half diagonally once to yield 22 triangles.
- 1 - 7 1/4" square, cut in half diagonally twice to yield 4 triangles.

### From the Black Cameo cut:

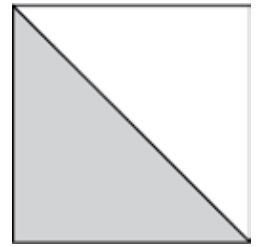
- 6 - 1 1/2" WOF strips (Inner Border)
- 8 - 2 1/2" WOF strips (Binding)

Prior to starting this project, please check our web site for any updates to this pattern: [www.clothworks.com](http://www.clothworks.com)

## Directions

### Half-Square Triangles - Finished Size 6 1/2" square

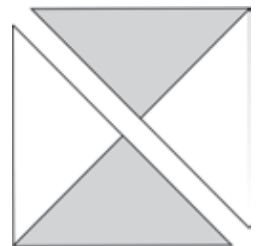
1. With right sides facing, sew together a Khaki Sm. Floral & Green Tonal 6 7/8" triangle to create a half-square triangle block. (Diagram 1)
2. Make the following number of squares for each combination:
  - 6 Khaki Sm. Floral/Green Tonal Squares
  - 14 Pink Tonal/Red Cameo Squares



(Diagram 1)

### Hourglass Block - Finished Size 6 1/2" square

1. With right sides facing, sew together a Khaki Sm. Floral & Green Tonal 7 1/4" triangle. Make a second triangle reversing the color placement.
2. Sew the two triangles together to complete the block. (Diagram 2)
3. Make the following number of squares for each combination:
  - 4 Khaki Sm. Floral/Green Tonal Squares
  - 4 Pink Tonal/Red Cameo Squares
  - 2 Pink Sm. Floral/Blue Cameo Squares



(Diagram 2)

### Putting it Together

1. Referring to the Layout Diagram, lay out the blocks into diagonal rows.
2. Sew the blocks together in each row; press seams away from pieced blocks.
3. Sew the rows together to complete the center of the quilt.

### Inner Border

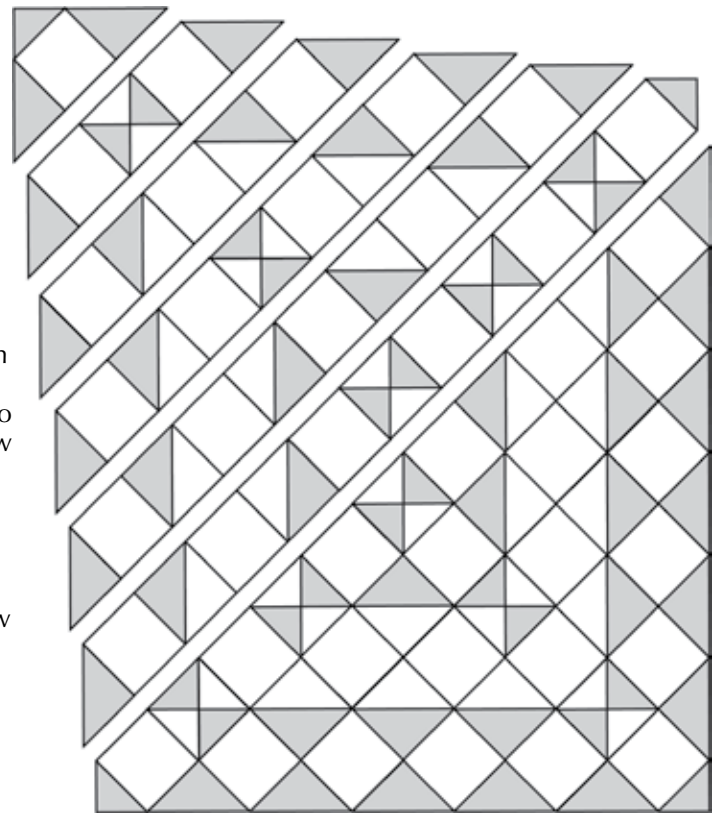
1. Sew the 1 1/2" Black Cameo Inner Border strips together.
2. Cut into 2 - 1 1/2" x 60" strips and sew to each side of the quilt.
3. Cut the remaining strip into 2 - 1 1/2" x 53 1/2" strips and sew to the top & bottom of the quilt.

### Outer Border

1. Sew 4 of the 6 1/2" Cream Lg. Floral Outer Border Strips together and cut into 2 - 6 1/2" x 62" strips. Sew to each side of the quilt.
2. Sew the 4 remaining 6 1/2" Cream Lg. Floral Outer Border Strips together and cut into 2 - 6 1/2" x 65 1/2" strips. Sew to the top and bottom of the quilt.

### Finishing

1. Layer the quilt, batting & backing.
2. Quilt and bind as desired.



(Layout Diagram)

While every attempt has been made to give accurate measurements, yardage requirements, and construction directions, this does not allow for personal variations in measuring, cutting and/or sewing. Clothworks is not responsible for printing errors.