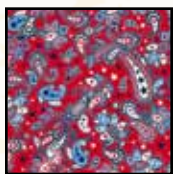




Finished Size: 55" X 71"



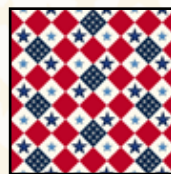
21606 R



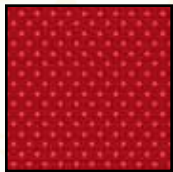
21605 N



21611 E



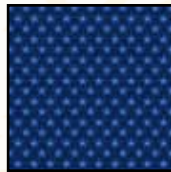
21620 RE



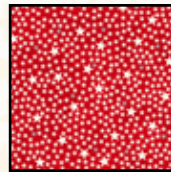
21610 R



21610 E



21610 N



21608 R



21609 N



21607 RN

YARDAGE REQUIREMENTS

Design	Yards
21605 N	½
21611 E	½
21620 RE	½
21609 N	⅞
21606 R	¾
21610 N	1¾
21610 R	1¼
21610 E	1⅜
21608 R	1
21607 RN (backing)	4½

Quilt Designed by Erin Witt

Note: Unless noted, measurements are given in inches and seam allowance is 1/4". Strips are cut selvedge to selvedge.

Fabric Requirements

21605 N -- 1/2 Yard (Flags)
 21611 E -- 1/2 Yard (Cream word print)
 21620 RE -- 1/2 Yard (Diamond print)
 21610 E -- 1 3/8 Yard (White Stars)
 21610 N -- 1 3/4 Yard (Blue Stars)
 21608 R -- 1 Yard (Red/White Stars)
 21606 R -- 3/4 Yard (Red Paisley)
 21609 N -- 7/8 Yard (Stripe) – for pieced first border.
 21610 R -- 1 1/4 Yard (Red Stars) – for pieced third border.
 21607 RN -- 4 1/2 Yard (Backing)

Cutting Directions

21605 N -- 1/2 Yard (Flags)
 Cut (2) 4 1/2" strips, subcut (12) 4 1/2" X 4 1/2" squares.

21611 E -- 1/2 Yard (Cream word print)
 Cut (2) 4 1/2" strips, subcut (12) 4 1/2" X 4 1/2" squares.

21620 RE -- 1/2 Yard (Diamond print)
 Cut (2) 4 1/2" strips, subcut (12) 4 1/2" X 4 1/2" squares.

21610 E -- 1 3/8 Yard (White Stars)
 Cut (3) 4 1/2" strips, subcut (24) 4 1/2" X 4 1/2" squares.
 Cut (2) 5 1/4" strips, subcut (12) 5 1/4" X 5 1/4" squares.
 Cut in half twice to create (48) triangles for Unit 1's.
 Cut (4) 3" strips, subcut (46) 3" squares. Cut once diagonally to make (92) triangles for second border piecing.

#21610 N -- 1 3/4 Yard (Blue Stars)
 Cut (4) 5 1/4" strips subcut (24) 5 1/4" X 5 1/4" squares.
 Cut in half twice to create (96) triangles for

Unit 1's.

Cut (3) 3 3/8" strips, subcut (26) 3 3/8" squares for second border piecing.

Cut (3) strips, subcut (31) 3" squares. Cut once diagonally to make (62) triangles for second border piecing.

Cut (7) 2 1/2" strips across length of fabric. Piece as necessary to make 265" of binding.

#21608 R -- 1 Yard (Red/White Stars)

Cut (2) strips, subcut (12) 5 1/4" X 5 1/4" squares. Cut in half twice to create (48) triangles for Unit 1's.

Cut (2) 3 3/8" strips, subcut (16) 3 3/8" squares for second border piecing.

Cut (2) 3" strips, subcut (17) 3" squares. Cut once diagonally to make (34) triangles for second border piecing.

#21606 R -- 3/4 Yard (Red Paisley)

Cut (1) 3 3/8" strip, subcut (10) 3 3/8" squares for second border piecing.

Cut (1) 3" strip subcut (10) 3" squares. Cut once diagonally to make (20) triangles for second border piecing.

#21609 N -- 7/8 Yard (Stripe) Fussy cut along selvedge for desired direction.

Cut (3) 4 1/2" strips. Sew together and sub cut to make (2) 4 1/2" X 36 1/2" strips for top and bottom of first border.

Cut (4) 2 1/2" strips. Sew together and subcut to make (2) 2 1/2" X 56 1/2" strips for sides of first border.

#21610 R -- 1 1/4 Yard (Red Stars)

Cut (3) 4" strips. Sew together and subcut to make (2) 4" X 48 1/2" strips for top and bottom of third border.

Cut (4) 4" strips. Sew together and subcut to make (2) 4" X 71 1/2" strips for sides of third border.

Instructions

1. Unit 1.



Assemble red/white, white, and blue star fabric triangles (that were cut from the 5 ¼” squares). Make (48) Unit 1’s, as shown.

Each unit should measure 4 ½” X 4 ½”.

2. Quilt top center

Assemble quilt top center, referring to quilt picture for proper block rotation.

Quilt top should now measure 36 ½” X 48 ½”

3. First Border – Stripe Fabric

Sew (1) 4 ½” X 36 ½” strip to top and (1) strip to bottom of quilt center.

Sew (1) 2 ½” X 56 ½” strip to each side of quilt center.

Quilt top should now measure 40 ½” X 56 ½”

4. Second Border – Ribbon

Picture 1. – Top and Bottom of Border #2



Referring to coloration above, layout triangles and squares to form (10) Square in a Square units.

Sew and trim each unit to 4 ½” X 4 ½”. Sew units together, as pictured above.

Repeat to make Bottom of Border #2 (It is the mirror image of the top border or “flipped.”)

Sew to top and bottom of quilt top, referring to quilt picture for proper rotation.

While all possible care has been taken to ensure the accuracy of this pattern, we are not responsible for printing errors or the way in which individual work varies.

Picture 2. – Left and Right Sides of Border #2



Referring to coloration above, layout triangles and squares to form (16) Square in a Square units.

Sew and trim each unit to 4 ½” X 4 ½”. Sew units together, as pictured above.

Repeat to make other side of Border #2 (It is the mirror image of the other side border or “flipped.”)

Sew left and right sides of quilt top, referring to quilt picture for proper rotation.

Quilt top should now measure 48 ½” X 64 ½”

5. Third Border – Red Stars

Sew (1) 4” X 48 ½” strip to top and (1) strip to bottom of quilt top.

Sew (1) 4” X 71 ½” strip to each side of quilt top.

Quilt top should now measure 55” X 71”

Quilt and bind, as desired.