

# EARTHTONES

FABRIC COLLECTION BY  
Norman Wyatt Jr. / Art in Motion

FREE pattern  
available on  
our website,  
[pbtex.com](http://pbtex.com)



*Enchanted Earth* quilt by Nancy Mahoney  
Quilt Size: 58" square



[pbtex.com](http://pbtex.com)



# Enchanted Earth

Quilt by Nancy Mahoney,  
using the *Earthtones* fabric collection by Norman Wyatt Jr./Art in Motion for P&B Textiles

Quilt size: 57 <sup>3</sup>/<sub>4</sub>" square

## Yardages

Fabric A:	<b>EART 290 X</b>	1/2 yard
Fabric B:	<b>EART 291 XB</b>	1 yard
Fabric C:	<b>EART 293 Z</b>	1 1/2 yards
Fabric D:	<b>EART 294 E</b>	1/2 yard
Fabric E:	<b>EART 294 KZ</b>	3/4 yard
Fabric F:	<b>EART 295 YG</b>	1/2 yard
Fabric G:	<b>EART 296 B</b>	1/4 yard
Fabric H:	<b>EART 296 X</b>	1/2 yard
Fabric I:	<b>EART 296 Z</b>	1 1/2 yards
<b>Backing:</b>	any <i>Earthtones</i> fabric	3 3/4 yards

**Omnigrid #98 ruler** (or other right triangle ruler)

## Cutting

From fabric A (**EART 290 X**), cut:

- (9) 6 1/4" squares

From fabric B (**EART 291 XB**), cut:

- (2) 5" x 29 3/8" *lengthwise* border strips
- (2) 5" x 24 7/8" *lengthwise* border strips
- (16) 4 1/2" squares

From fabric C (**EART 293 Z**), cut:\*

- (5) 3 3/8" x 54" strips; cut into (12) 3 3/8" x 12 1/2" rectangles and (8) triangles using the right-angle ruler

From fabric D (**EART 294 E**), cut:

- (10) 1 1/2" x 42" strips; cut into (48) 1 1/2" x 7" rectangles

From fabric E (**EART 294 KZ**), cut:

- (2) 5" x 29 3/8" border strips
- (2) 5" x 24 7/8" border strips

From fabric F (**EART 295 YG**), cut:

- (8) 1 1/2" x 42" strips

From fabric G (**EART 296 B**), cut:

- (5) 1 1/4" x 42" middle-border strips

From fabric H (**EART 296 X**), cut:

- (24) 3 3/4" squares; cut in half diagonally to yield (48) triangles

From fabric I (**EART 296 Z**), cut:

- (4) 2 1/2" x 42" strips; cut into (64) 2 1/2" squares
- (8) 1 1/2" x 42" strips
- (5) 1 1/2" x 42" inner-border strips
- (7) 2 1/4" x 42" binding strips

\**Before cutting the strips from fabric C, choose a section of stripes that repeat at least 5 times across the width of the fabric. Then cut the 3 3/8"-wide strips, making sure to center the chosen section in the middle of each strip.*



## Block A

1. Join a fabric F strip to the long edge of a fabric I  $1\frac{1}{2}$ "-wide strip to make a strip set. Make eight strip sets total. Crosscut the strips sets into (64)  $4\frac{1}{2}$ "-wide segments.

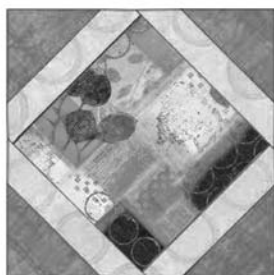
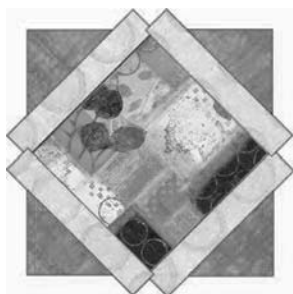
2. Lay out four segments from step 1, four fabric I squares, and one fabric B square as shown in the block diagram. Join the pieces into rows and then join the rows to complete block A. Make 16 A blocks, measuring  $8\frac{1}{2}$ " square.



## Block B

3. Center and sew a fabric D rectangle to each side of a fabric A square.

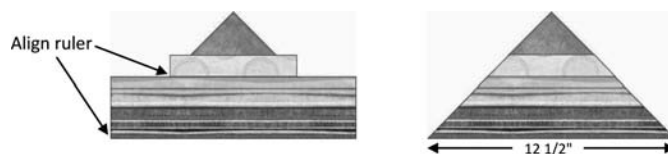
4. Center and sew a fabric H triangle to each D rectangle as shown. Trim and square up the block to measure  $8\frac{1}{2}$ " square, making sure to leave  $\frac{1}{4}$ " seam allowance beyond the points of the center square. Repeat the process to make 9 B blocks total.



## Setting Triangles

5. Center and sew a fabric D rectangle to a fabric C rectangle. Then center and sew a fabric H triangle to the other side of the fabric D rectangle. Place the  $45^\circ$  line on a ruler on a seam line and the edge of the ruler

on the corner of the C rectangle. Trim away the excess fabric to create a  $45^\circ$  angle on one side of the unit. Align the ruler in the same manner as before and trim the opposite end of the rectangles at a  $45^\circ$  angle as shown. Make 12 side setting triangles.



6. Join two fabric C triangles along their short edges to make a corner triangle, making sure to match the stripes. Make four corner triangles.

## Assembly

7. Lay out the blocks, side setting triangles, and corner triangles in diagonal rows as shown in the photo. Join the blocks and triangles into rows. Then join the rows to complete the quilt center. The quilt center should measure  $45\frac{3}{4}$ " x  $45\frac{3}{4}$ ".

8. Join the fabric I  $1\frac{1}{2}$ "-wide inner-border strips end to end to make a long strip. Measure the length of the quilt and trim two strips to this length. Sew the strips to the sides of the quilt top. Measure the width of the quilt top and trim two to this length. Sew the strips to the top and bottom of the quilt top to complete the inner border.

9. Repeat step 8 using the fabric G  $1\frac{1}{4}$ "-wide strips for the middle border. The quilt top should measure  $49\frac{1}{4}$ " x  $49\frac{1}{4}$ ".

10. Join fabric B and fabric E  $24\frac{7}{8}$ "-long strips end to end to make a  $49\frac{1}{4}$ "-long strip. Make two and sew them to opposite sides of the quilt top as shown in the photo. Join fabric B and fabric E  $29\frac{3}{8}$ "-long strips end to end to make a  $58\frac{1}{4}$ "-long strip. Make two and sew them to the top and bottom of the quilt top as shown in the photo to complete the outer border.

11. Layer the quilt top with batting and backing; baste. Quilt as desired. Using the fabric I  $2\frac{1}{4}$ "-wide strips, bind the edges to finish.

# EARTHTONES

Fabric Collection by Norman Wyatt Jr.



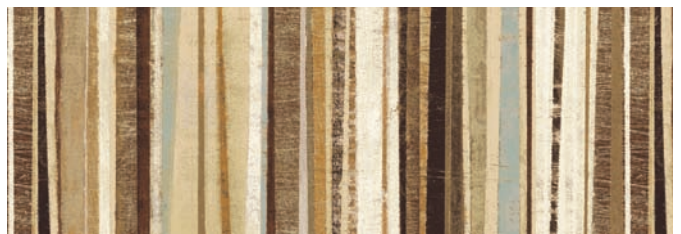
EART 290 X - SHOWN AT 25% SCALE



EART 291 XB



EART 292 KB



EART 293 Z



EART 294 E



EART 294 XZ



EART 294 ZZ



EART 295 E



EART 295 YG



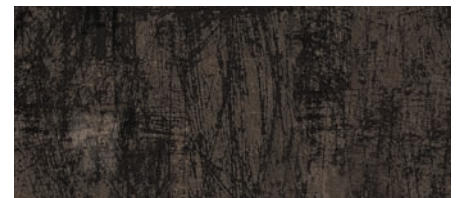
EART 295 Z



EART 296 B



EART 296 X



EART 296 Z

**P&B Textiles** ♦ 1580 Gilbreth Road, Burlingame, CA 94010 ♦ 800-852-2327

For wholesale orders: 14683 Midway Road, Addison, TX 75001 ♦ 800-351-9087 ♦ [www.pbtex.com](http://www.pbtex.com)



100% cotton ♦ Cold wash & dry ♦ 43"/44" ♦ Colors may vary due to printing process ♦ 4/12

All fabrics shown at 40% scale except 290 which is 20%.