



# Soul Garden

Fabric Collection by **Carolyn Gavin** for The Lilla Rogers Studio

FREE pattern  
available on  
our website,  
[pbtex.com](http://pbtex.com)



*Soulicious Stars* quilt by Alison Tudor • Quilt Size: 65" square



[pbtex.com](http://pbtex.com)



# Soulcious Stars

Quilt by Alison Tudor using the *Soul Garden* fabric collection by Carolyn Gavin/The Lilla Rogers Studio for P&B Textiles • Size: 65" square

## Yardage

SOUL 259 N	Navy Flowers	1 fat eighth*
SOUL 260 Y	Yellow Butterflies	3/8 yard
SOUL 260 Z	Brown Butterflies	1 fat eighth*
SOUL 261 E	White Spirals	1 1/8 yards
SOUL 261 N	Navy Spirals	3/4 yard
SOUL 262 B	Blue Sketches	3/8 yard
SOUL 262 F	Pink Sketches	3/4 yard
SOUL 262 G	Green Sketches	5/8 yard
SOUL 262 O	Orange Sketches	5/8 yard
SOUL 264 R	Pink Stripe	1 1/2 yard
ESSE 465 Y	Binding	1/2 yard
BACKING	Any SOUL fabric	4 yards

\* fat eighth is 9" x 21"



## Cutting

**From the navy flowers print (259 N), cut:**

- (4) 4 1/4" squares

**From the yellow butterflies (260 Y), cut:**

- (4) 4 1/4" x 9 1/2" rectangles
- (4) 2" x 9 1/2" rectangles
- (4) 2" x 4 1/4" rectangles
- (5) 4 1/4" squares

**From the brown butterflies (260 Z), cut:**

- (4) 4 1/4" squares

**From the white spirals (261 E), cut:**

- (9) 3 1/2" x wof strip; cut into (96) 3 1/2" squares

**From the navy spirals (261 N), cut:**

- (6) 3 1/2" x wof middle-border strips

**From the blue sketches (262 B), cut:**

- (12) 3 1/2" squares; cut in half diagonally to make (24) half-square triangles
- (4) 4 1/4" squares

**From the pink sketches (262 F), cut:**

- (12) 3 1/2" squares; cut in half diagonally to make (24) half-square triangles
- (5) 4 1/4" x 9 1/2" rectangles
- (5) 2" x 9 1/2" rectangles
- (5) 2" x 4 1/4" rectangles
- (5) 4 1/4" squares

**From the green sketches (262 G), cut:**

- (12) 3 1/2" squares; cut in half diagonally to make (24) half-square triangles
- (5) 2 1/2" x wof inner-border strips

**From the orange sketches (262 O), cut:**

- (12) 3 1/2" squares; cut in half diagonally to make (24) half-square triangles
- (4) 4 1/4" x 9 1/2" rectangles
- (4) 2" x 9 1/2" rectangles
- (4) 2" x 4 1/4" rectangles
- (4) 4 1/4" squares

**From the pink stripe (264 R), cut:**

- (7) 5 1/2" x wof outer-border strips
- (12) 3 1/2" squares

**From ESSE 465 Y, cut:**

- (7) 2 1/4" x wof binding strips

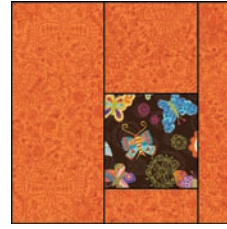
## Wonky Star Block



Use a  $\frac{1}{4}$ "-wide seam allowance throughout and press the seam allowances toward the darker fabric.

1. Sew a blue, green, pink, or orange sketches half-square triangle to one corner of a white spiral  $3\frac{1}{2}$ " square. Sew the triangles at different angles to create the wonky look of the star. However, make sure that when the triangle is flipped open and pressed, it extends beyond the edges of the white square. Press the triangle open. Trim the excess white fabric underneath the triangle, leaving  $\frac{1}{4}$ " for seam allowance.
2. Sew a matching blue, green, pink, or orange sketches half-square triangle to an adjacent corner of the white square. Press and trim. Square up the star-point unit to measure  $3\frac{1}{2}$ " x  $3\frac{1}{2}$ ", making sure there is at least a  $\frac{1}{4}$ " seam allowance beyond the point where the two triangles overlap. All outer points should be at least  $\frac{1}{4}$ " from the outer edge or you will cut off the points of your stars.
3. Repeat steps 1 and 2, making a total of 12 blue units, 12 green units, 12 pink units, and 12 orange units.
4. Lay out one star-point unit of each color, four white spiral squares, and one pink striped square in a nine-patch arrangement as shown in the photo. Join the pieces into rows and then join the rows to complete the block. The block should measure  $9\frac{1}{2}$ " square. Make a total of 12 blocks.

## Off-Center Square-in-a-Square



For the background in each block use matching yellow, pink, or orange pieces as follows:

- (1)  $4\frac{1}{4}$ " x  $4\frac{1}{4}$ " square
- (1) 2" x  $4\frac{1}{4}$ " rectangle
- (1)  $4\frac{1}{4}$ " x  $9\frac{1}{2}$ " rectangle
- (1) 2" x  $9\frac{1}{2}$ " rectangle

For the center square use (1) navy flowers, brown butterflies, yellow butterflies, or blue sketches  $4\frac{1}{4}$ " square.

5. Sew a  $4\frac{1}{4}$ " center square to a  $4\frac{1}{4}$ " background square. Then sew a 2" x  $4\frac{1}{4}$ " rectangle to the opposite side of the center square.
6. Sew a  $4\frac{1}{4}$ " x  $9\frac{1}{2}$ " rectangle to the left side of the unit from step 5. Sew a 2" x  $9\frac{1}{2}$ " rectangle to the opposite side of the unit to complete the block. The block should measure  $9\frac{1}{2}$ " square.
7. Repeat steps 5 and 6 to make the following blocks:
  - (1) Pink block with yellow center square
  - (2) Pink blocks with brown center squares
  - (2) Pink blocks with navy center squares
  - (2) Orange blocks with brown center squares
  - (2) Orange blocks with navy center squares
  - (4) Yellow blocks with blue sketches center squares

## Quilt Assembly

1. Lay out the blocks in five rows of five blocks each, alternating the blocks in each row and from row to row as shown in the photo. Join the blocks into rows and then join the rows.
2. Join the green sketches  $2\frac{1}{2}$ "-wide strips end to end to make a long strip. Measure the length of the quilt top. Cut two strips to this length and sew them to the sides of the quilt top. Measure the width of the quilt top. Cut two strips to this length and sew them to the top and bottom of the quilt top for the inner border.
3. Join the navy spiral  $3\frac{1}{2}$ " strips end to end. Measure, cut and sew the strips to the sides, top and bottom of the quilt top for the middle border.
4. Join the pink striped  $5\frac{1}{2}$ " strips end to end. Measure, cut and sew the strips to the sides, top and bottom of the quilt top for the outer border.
5. Layer the quilt top with batting and backing; baste. Quilt as desired and bind the edges to finish.



# Soul Garden

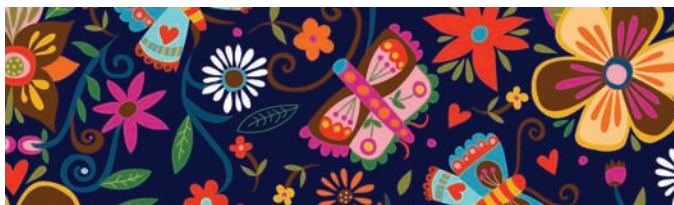
Fabric Collection by **Carolyn Gavin**  
for the Lilla Rogers Studio



SOUL 259 E



SOUL 260 Y



SOUL 259 N



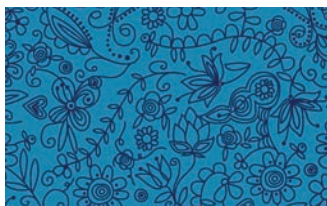
SOUL 260 Z



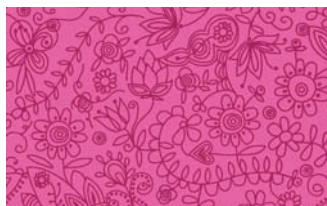
SOUL 261 E



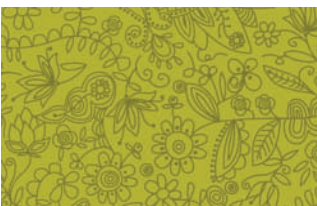
SOUL 261 N



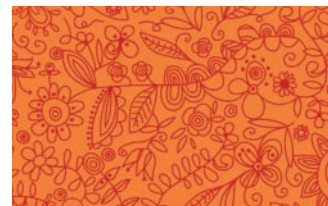
SOUL 262 B



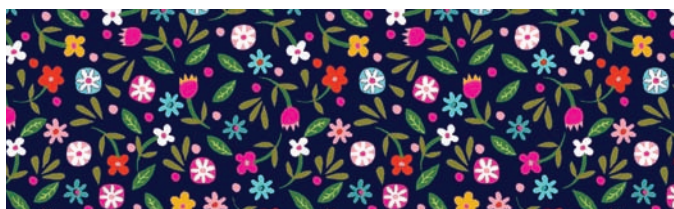
SOUL 262 F



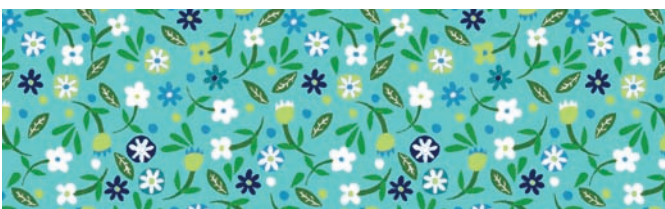
SOUL 262 G



SOUL 262 O



SOUL 263 N



SOUL 263 T



SOUL 264 E



SOUL 264 N



SOUL 264 R

**P&B Textiles** ♦ 1580 Gilbreth Road, Burlingame, CA 94010 ♦ 800-852-2327

For wholesale orders: 14683 Midway Road, Addison, TX 75001 ♦ 800-351-9087 ♦ [www.pbtext.com](http://www.pbtext.com)



100% cotton ♦ Cold wash & dry ♦ 43"/44" ♦ Colors may vary due to printing process ♦ 1/12

All fabrics shown at 50% scale.