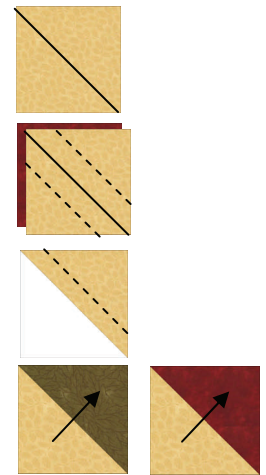


Cutting Directions for 1 Block

- From Background Fabric Cut:
 - (1) 4-1/2"x4-1/2" Square (A)
 - (4) 2-1/2"x4-1/2" Rectangles (B)
 - (6) 3"x3" (C)
- From Brown Fabric Cut:
 - (8) 1-1/2"x1-1/2" Squares (D)
 - (4) 1-1/2"x4-1/2" Rectangles (E)
- From Green Fabric Cut:
 - (4) 3"x3" Squares (F)
- From Red Fabric Cut:
 - (2) 3"x3" Squares (G)
- From Gold Fabric Cut:
 - (8) 1-1/2"x1-1/2" Squares (H)
 - (4) 1-1/2"x4-1/2" Rectangles (I)

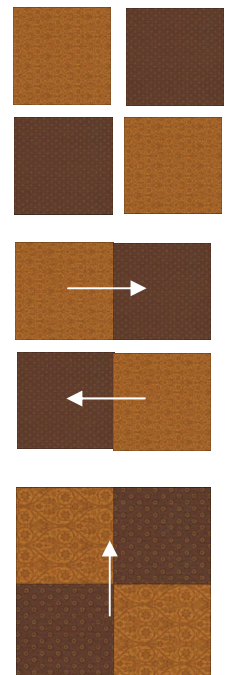
Half Square Triangles

- Mark a diagonal line on the backside of (6) Background "C" Squares as shown.
- Layout (1) Background "C" Square on top of (1) Green "F" Square as shown.
- Sew a 1/4" seam on both sides of the drawn line.
- Cut in half on the diagonal line.
- Press towards the Green triangle.
- Square block to 2-1/2"x2-1/2"
- Repeat previous (6) steps to make a total of (8) Green Half Square Triangles (HST) and (4) Red HST.



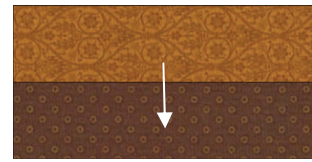
4 patches

- Layout (2) Brown "D" Squares and (2) Gold "H" Squares as shown.
- Sew block into rows pressing towards the Brown Squares.
- Sew rows together to make (1) 4 Patch Block. Press in the direction of the arrow. Block should measure 2-1/2"x2-1/2"



Pieced Rectangles

- Layout (1) Brown “E” Rectangle and (1) Gold “T” rectangle as shown.
- Sew rectangles together along the long side to make (1) Pieced rectangle.
- Press towards the Brown. Pieced Rectangle should measure 2-1/2”x4-1/2”
- Repeat previous (3) Steps to make a total of (4) Pieced Rectangles.



Block Assembly

- Layout (4) Red HST, (8) Green HST, (4) 4 Patches, (4) Pieced Rectangles, (4) Background “B” Rectangles, and (1) Background “A” Square.
- Sew Block into rows, pressing in the direction of the arrows.
- Sew Rows together, pressing in the direction of the arrows. Block should measure 12-1/2”x12-1/2”

