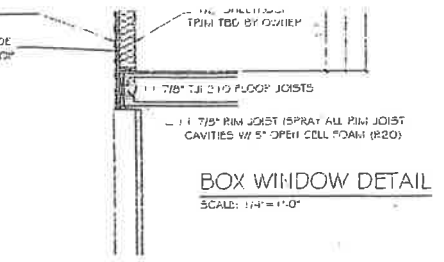
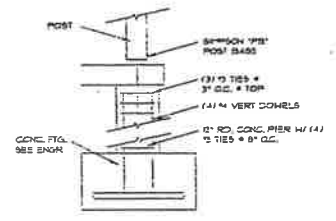


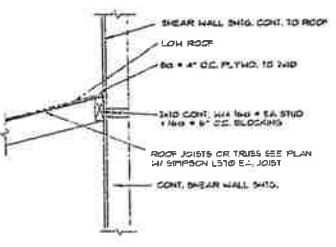
TYPICAL WALL SECTION
SCALE: 1/8"=1'-0"



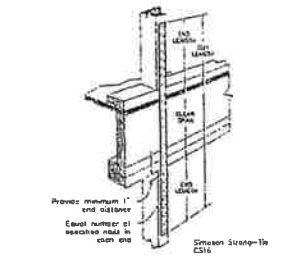
BOX WINDOW DETAIL
SCALE: 1/4"=1'-0"



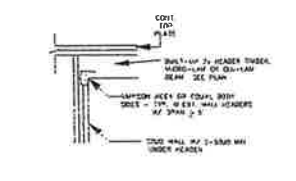
PATIO POST FTG. DETAIL
SCALE: 1/4"=1'-0"



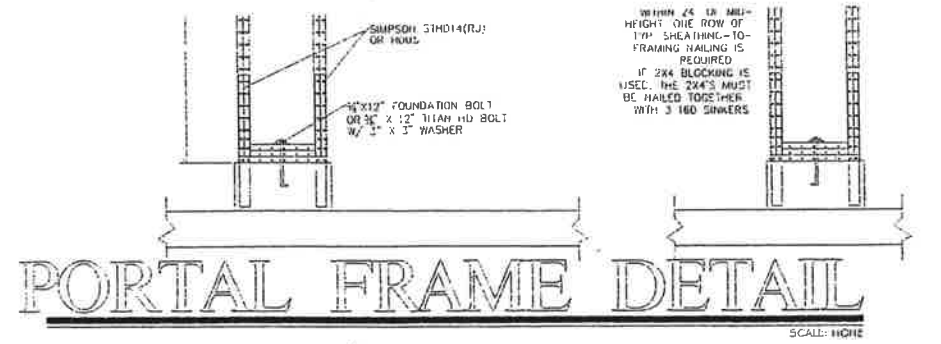
LOW ROOF/SHEAR WALL
SCALE: 1/4"=1'-0"



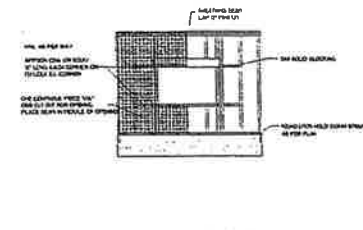
TYPICAL CS16 DETAIL
SCALE: 1/4"=1'-0"



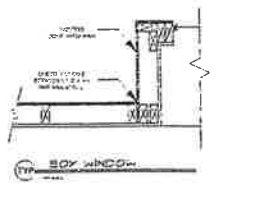
HEADER DETAIL
SCALE: 1/4"=1'-0"



PORTAL FRAME DETAIL
SCALE: 1/8"=1'-0"



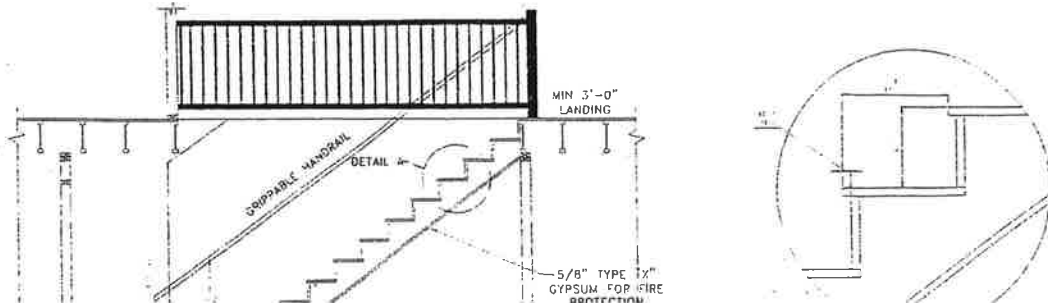
PERFORATED SHEAR WALL (PSW) FRAMING DETAIL
SCALE: 1/4"=1'-0"



BOX WINDOW
SCALE: 1/4"=1'-0"

ALL EXTERIOR WALL FINISHES MUST BE INSTALLED PER MANUFACTURER'S INSTALLATION INSTRUCTIONS. FLASHING SHALL BE INSTALLED IN SUCH A MANNER AS TO PREVENT MOISTURE FROM ENTERING A WALL, ROOF OR FLOOR AND REDIRECT IT TO THE EXTERIOR. FLASHING SHALL BE INSTALLED AT THE PERIMETERS OF EXTERIOR DOOR AND WINDOW ASSEMBLIES, PENETRATIONS AND TERMINATIONS OF EXTERIOR WALL ASSEMBLIES, EXTERIOR WALL INTERSECTIONS WITH ROOFS, CHIMNEYS, PORCHES, DECKS, BALCONIES AND SIMILAR PROJECTIONS AND BUILT-UP GUTTERS AND SIMILAR LOCATIONS WHERE MOISTURE COULD ENTER THE WALL. FLASHING WITH PROJECTED FLANGES SHALL BE INSTALLED ON BOTH SIDES AND THE ENDS OF COPINGS, UNDERSILLS AND CONTINUOUSLY ABOVE PROJECTED TRIM. A FLASHING SHALL BE INSTALLED AT THE INTERSECTION OF THE FOUNDATION TO STUCCO, MASONRY, SIDING OR BRICK, VENEER. THE FLASHING SHALL BE AN APPROVED CORROSION-RESISTANT FLASHING.

ALL SLABS TO HAVE 4" THICK BASE COURSE CONSISTING OF GRAVEL OR CRUSHED STONE PASSING # 2" SIEVE WHEN SLAB IS BELOW GRADE UNLESS CONCRETE SLAB IS INSTALLED ON WELL-DRAINED SOIL APPROVED BY THE BUILDING OFFICIAL.



INTERIOR STAIR NOTES:

- 37" MIN WIDTH
- 7 3/4" MAX RISE/ RISER (2" UTAH AMENDED)
- 10 MIN RUN/ TREAD (9" UTAH AMENDED)
- LANDING MUST BE AT TOP & BOTTOM
- LANDING MIN. 36"
- NOSING MIN 3/4" - 1 1/4" MAX
- NOSING NOT REQUIRED IF TREAD IS MIN. 11" (10" UTAH AMENDED)
- MAX DIFFERENCE BETWEEN RISERS IS 3/8"