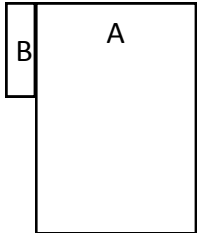


HOT DOG PILLOW CASE

Piece A: 3/4 yard cotton or flannel

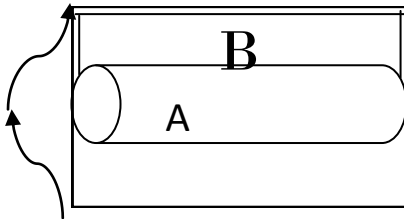
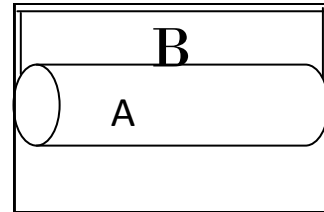
Piece B: 1/4 yard cotton or flannel, coordinating color.

A 2 inch strip cut width of fabric can be pressed wrong sides together and placed in between Piece A and B in step on as an optional accent.



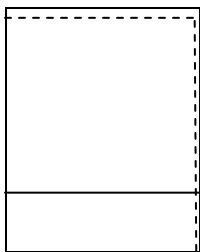
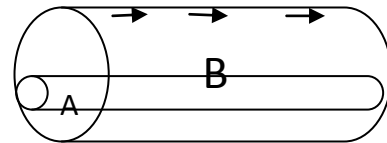
Step 1: Align A on top of B with right sides together.

Step 2: Roll A up to almost the top edge, forming the “Hot Dog”



Step 3: fold the bottom of B up and over the “Hot Dog” and pin all three layers together.

Step 4: Stitch along the pinned edge. Reach into the “bun” and pull the “hot dog” out.



Step 5: Fold this in half with the right sides together and stitch along the top and side edges.

Thank you for helping us make our world a happier place for our friends and neighbors.

www.thepresserfoot.com

2001 N Main Longmont, Co 303-485-6681	2111 S College Fort Collins, Co 970-484-1094
---	--