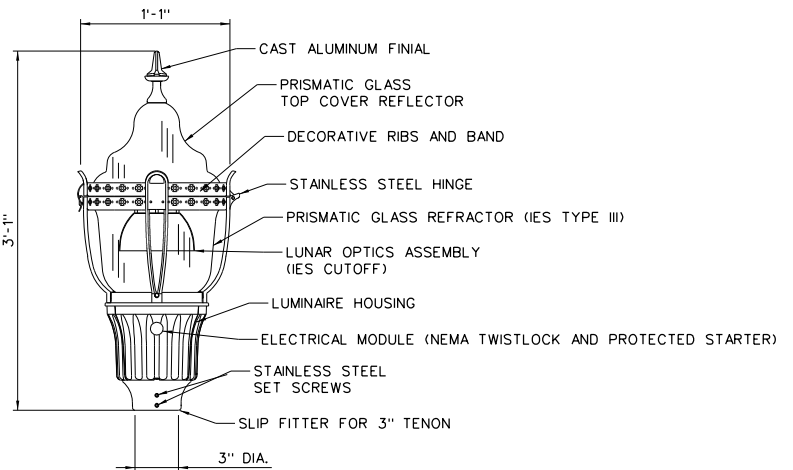


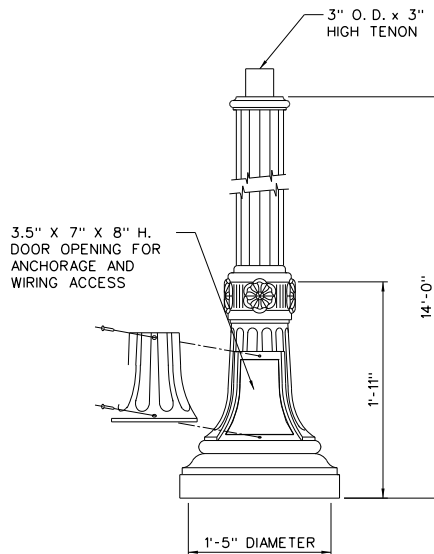
**GRANVILLE DETAIL**

HOLOPHANE CATALOG • NYA14F5J17P07LABBK  
GVD404KASMB8RSBHPCSL25



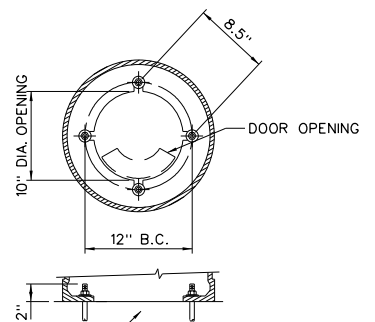
**LUMINAIRE DETAIL**

CATALOG • GVD404KASMB8RSBHPCSL25

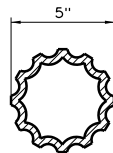


**POST DETAIL**

CATALOG • NYA14F5J17P07LABBK



**ANCHORAGE DETAIL**



**5" DIA. FLUTED SHAFT CROSS SECTION**

APPROVED EQUAL PARTS MAY BE SUBSTITUTED FOR THE HOLOPHANE PRODUCTS SPECIFIED ON THIS STANDARD DRAWING.



STATEMENT OF USE

THIS DOCUMENT AND ANY ILLUSTRATIONS HEREON ARE PROVIDED AS STANDARD CONSTRUCTION DETAILS WITHIN LINDON CITY. DEVIATION FROM THIS DOCUMENT REQUIRES APPROVAL OF LINDON CITY CORPORATION AND J-U-B ENGINEERS CAN NOT BE HELD LIABLE FOR MISUSE OR CHANGES REGARDING THIS DOCUMENT.

REVISION

NO.	DESCRIPTION	BY	APR.	DATE
1	ADJUST LUMINAIRE HEIGHT DIMENSION	M.C.	M.C.	10/08/10
2	ADJUST POST NOMINAL HEIGHT DIMENSION	E.E.A.	M.C.	11/20/14
3	UPDATE HOLOPHANE CATALOG NUMBERS	E.E.A.	M.C.	11/20/14

**GRANVILLE LED STREET LIGHT**

LINDON CITY  
100 NORTH STATE

STANDARD DRAWING NUMBER:	<b>23c</b>
CAD DWG-LOC_Std0.wgs.dgn	
PLOT SCALE:	1,000
DRAWN BY:	TRC
DESIGN BY:	M.C.
CHECKED BY:	M.C.
ADOPTED DATE:	07 APR 15