

GRANDLAKE SNOWMOBILE TRAIL SYSTEM

**SUPPORT
OUR
SPONSORS**

NEVER SUMMER WILDERNESS

All wilderness areas are restricted to primitive modes of travel -- SNOWMOBILES PROHIBITED --

- Basic Rules of the Trail:**
- 1) Don't drink and ride
 - 2) Obey speed limits
 - 3) Respect private property
 - 4) Maintain a safe following distance
 - 5) Stay to your side of the trail
 - 6) Keep the trail clear --
 - a. Don't stop on blind turns
 - b. Don't park double on the trail
 - 7) Ride to your ability
 - 8) Don't ride alone
 - 9) Don't approach or harass wildlife

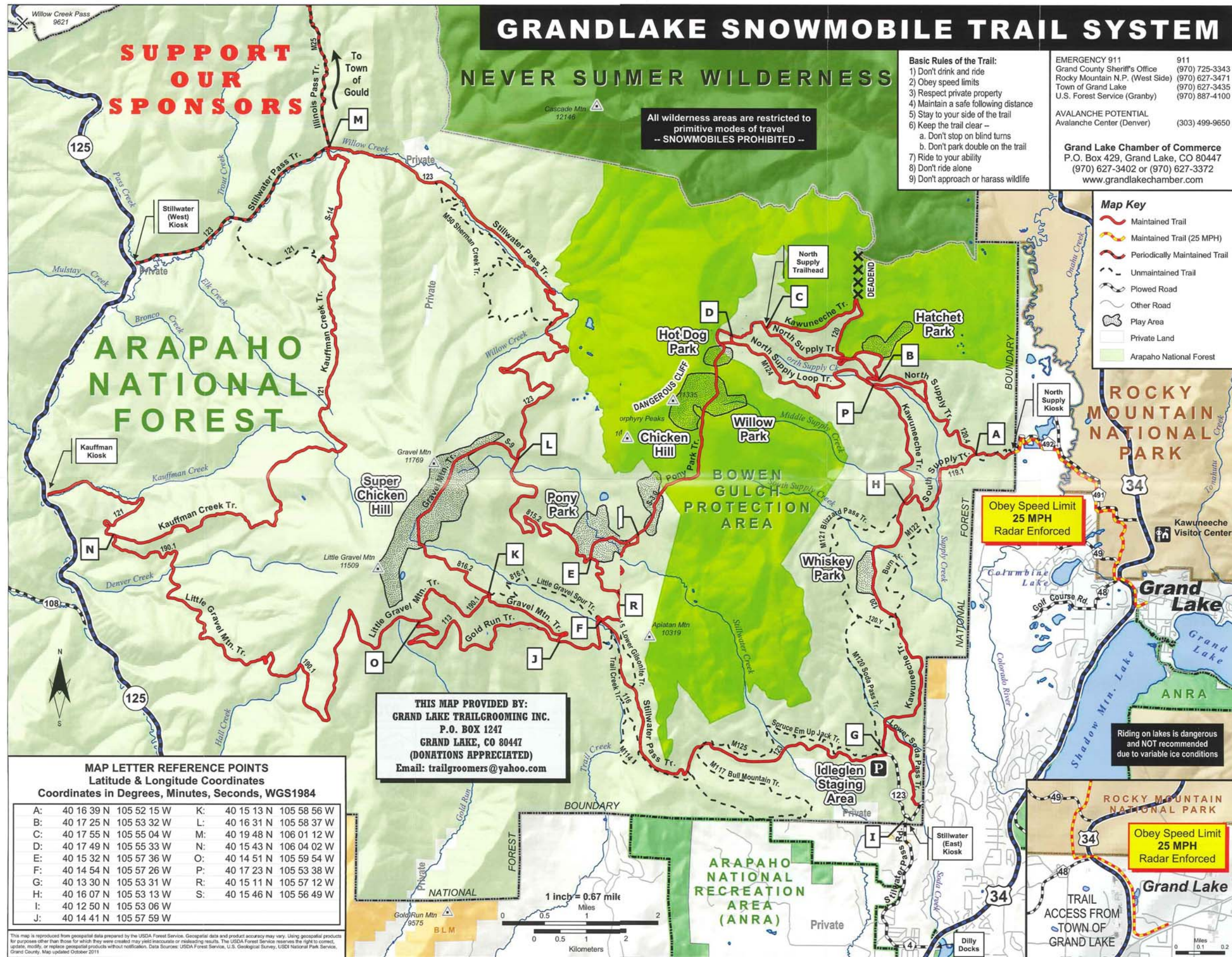
EMERGENCY 911
 Grand County Sheriff's Office (970) 725-3343
 Rocky Mountain N.P. (West Side) (970) 627-3471
 Town of Grand Lake (970) 627-3435
 U.S. Forest Service (Granby) (970) 887-4100

AVALANCHE POTENTIAL
 Avalanche Center (Denver) (303) 499-9650

Grand Lake Chamber of Commerce
 P.O. Box 429, Grand Lake, CO 80447
 (970) 627-3402 or (970) 627-3372
www.grandlakechamber.com

Map Key

- Maintained Trail
- Maintained Trail (25 MPH)
- Periodically Maintained Trail
- Unmaintained Trail
- Plowed Road
- Other Road
- Play Area
- Private Land
- Arapaho National Forest



Obey Speed Limit
25 MPH
Radar Enforced

Riding on lakes is dangerous
and NOT recommended
due to variable ice conditions

Obey Speed Limit
25 MPH
Radar Enforced

THIS MAP PROVIDED BY:
GRAND LAKE TRAILGROOMING INC.
 P.O. BOX 1247
 GRAND LAKE, CO 80447
 (DONATIONS APPRECIATED)
 Email: trailgroomers@yahoo.com

MAP LETTER REFERENCE POINTS
 Latitude & Longitude Coordinates
 Coordinates in Degrees, Minutes, Seconds, WGS1984

A: 40 16 39 N 105 52 15 W	K: 40 15 13 N 105 58 56 W
B: 40 17 25 N 105 53 32 W	L: 40 16 31 N 105 58 37 W
C: 40 17 55 N 105 55 04 W	M: 40 19 48 N 106 01 12 W
D: 40 17 49 N 105 55 33 W	N: 40 15 43 N 106 04 02 W
E: 40 15 32 N 105 57 36 W	O: 40 14 51 N 105 59 54 W
F: 40 14 54 N 105 57 26 W	P: 40 17 23 N 105 53 38 W
G: 40 13 30 N 105 53 31 W	R: 40 15 11 N 105 57 12 W
H: 40 16 07 N 105 53 13 W	S: 40 15 46 N 105 56 49 W
I: 40 12 50 N 105 53 06 W	
J: 40 14 41 N 105 57 59 W	

This map is reproduced from geospatial data prepared by the USDA Forest Service. Geospatial data and product accuracy may vary. Using geospatial products for purposes other than those for which they were created may yield inaccurate or misleading results. The USDA Forest Service reserves the right to correct, update, modify, or replace geospatial products without notification. Data Sources: USDA Forest Service, U.S. Geological Survey, USGS National Park Service, Grand County. Map updated October 2011